

L&Q at BANKSIDE GARDENS

Siteplan & Floorplan Brochure
Block Five



CGI is indicative of L&Q at Bankside Gardens.

L&Q

L&Q

Siteplan

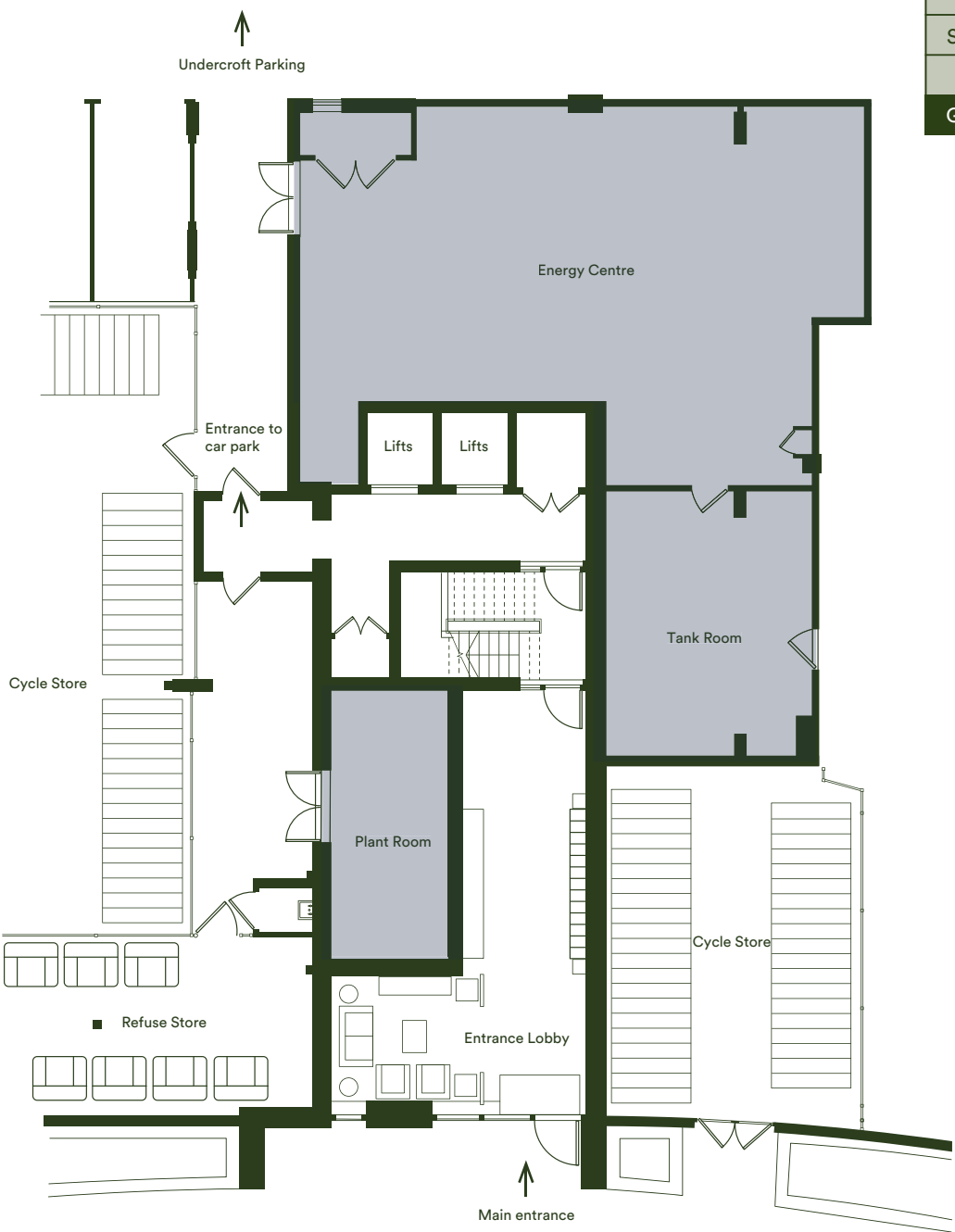
Disclaimer: Please note that the properties are currently under construction. For further clarification regarding specific individual plots, please ask our Sales Associates. Any depiction of the layout does not show details of gradients of land, boundary treatments, local authority street lighting or landscaping. It is our intention to build in accordance with this layout including the locations of Market Sale, Shared Ownership, London Living Rent, Private Rent and Affordable Rent properties (known as tenures). However, there may be occasions when the tenure location, house designs, boundaries, landscaping and positions of roads and footpaths, play areas and other facilities or amenities may change as the development proceeds and as properties are marketed. The layout (including tenure locations) is subject to amendments due to changing planning permission for the development, and depictions of the layout should be used as guidance only. No site map including tenure locations (whether computer generated or otherwise) forms part of any offer, contract, warranty, or representation and are for illustrative and guidance purposes only, quality of this technology may vary. In relation to computer generated images, minimum dimensions have been used to generate this image and as a result dimensions may vary (and should not be relied on by you).



Ground Floor



Tenth Floor
Ninth Floor
Eighth Floor
Seventh Floor
Sixth Floor
Fifth Floor
Fourth Floor
Third Floor
Second Floor
First Floor
Ground Floor



Key

 No public access

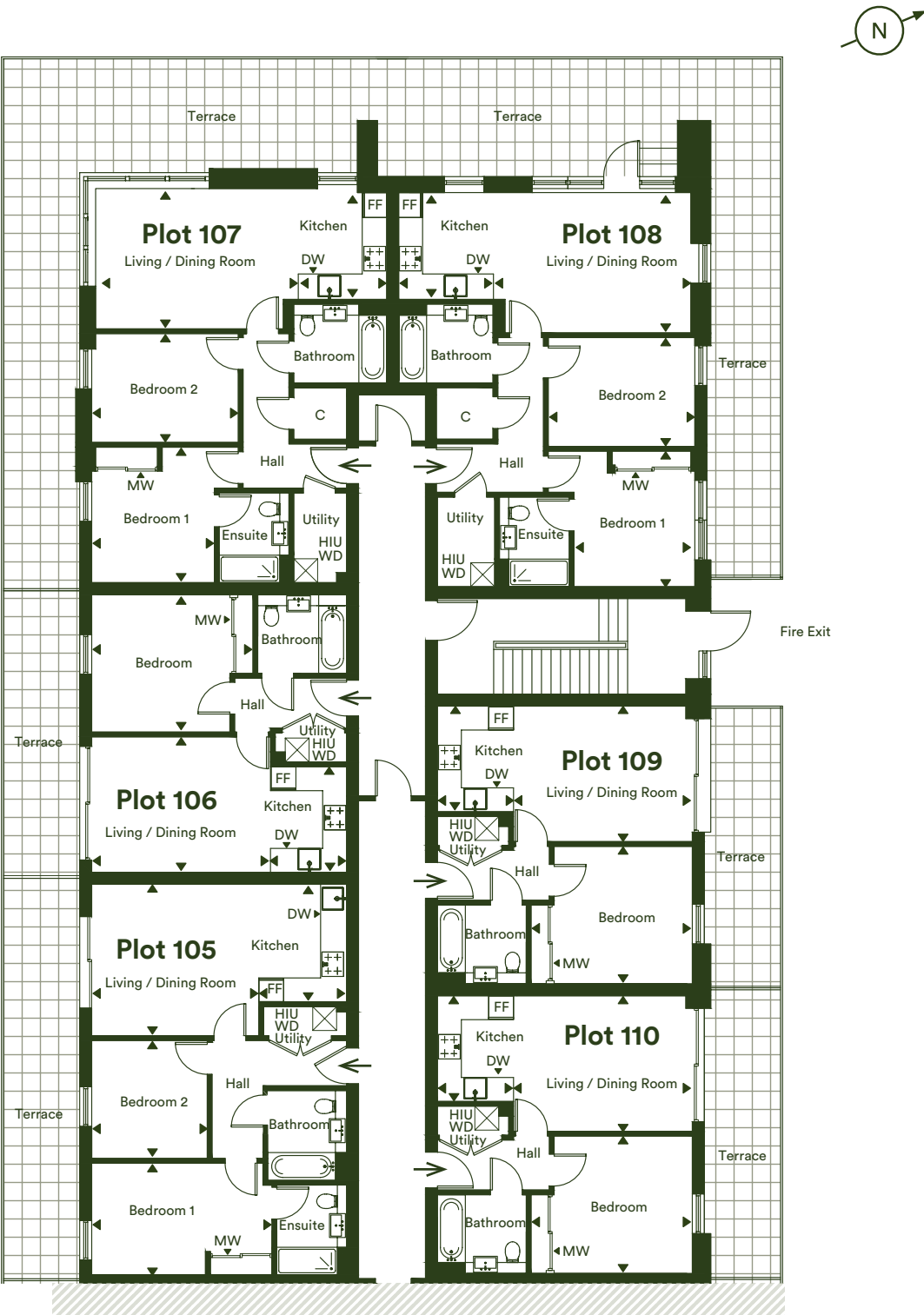
The floor plans provided are intended to only give a general indication of the proposed floor layout, are not drawn to scale and are not intended to form part of any offer, contract, warranty or representation. Measurements are given to the widest point, are approximate and are given as a guide only. They must not be relied upon as a statement or representation of fact. Do not use these measurements for carpet sizes, appliance spaces or items of furniture. Kitchen, bathroom and utility layouts may differ to build, and specific plot sizes and layouts may vary within the same unit type. Built-in wardrobe to include mirrored sliding doors, shelf and chrome hanging rail. For further clarification regarding specific individual plots, please ask our Sales Associates.

We provide the home
and you make it your own



First Floor

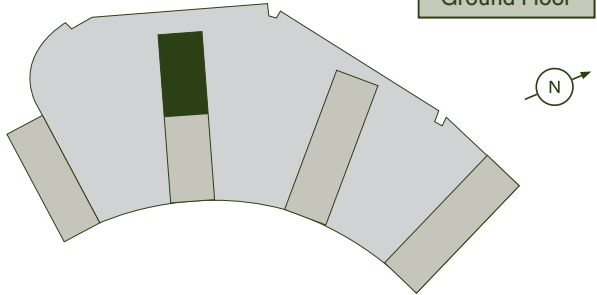
Plots 105, 106, 107, 108, 109 & 110



FF - Fridge/Freezer | MW - Mirrored Wardrobe | DW - Dishwasher
HIU - Heat Interface Unit | WD - Washer Dryer | C - Cupboard



Tenth Floor
Ninth Floor
Eighth Floor
Seventh Floor
Sixth Floor
Fifth Floor
Fourth Floor
Third Floor
Second Floor
First Floor
Ground Floor



Plot 105 - 2 Bedroom Apartment

Living/Dining Room	4.11m x 3.80m	13'6" x 12'6"
Kitchen	2.10m x 2.95m	6'11" x 9'8"
Bedroom 1	4.43m x 2.80m	14'6" x 9'2"
Bedroom 2	2.96m x 2.90m	9'8" x 9'6"
Total Internal Area	60.6m ²	652ft ²
Terrace	16.5m ²	178ft ²

Plot 106 - 1 Bedroom Apartment

Living/Dining Room	4.26m x 3.40m	14'0" x 11'2"
Kitchen	1.95m x 2.65m	6'5" x 8'8"
Bedroom	3.91m x 3.45m	12'10" x 11'4"
Total Internal Area	43.4m ²	467ft ²
Terrace	11.6m ²	124ft ²

Plot 107 - 2 Bedroom Apartment

Living/Dining Room	4.71m x 3.52m	15'6" x 11'6"
Kitchen	2.49m x 2.73m	8'2" x 8'11"
Bedroom 1	3.08m x 3.40m	10'1" x 11'2"
Bedroom 2	3.68m x 2.73m	12'1" x 8'11"
Total Internal Area	66.5m ²	716ft ²
Terrace	47.9m ²	515ft ²

Plot 108 - 2 Bedroom Apartment

Living/Dining Room	4.78m x 3.52m	15'8" x 11'6"
Kitchen	2.12m x 2.68m	6'11" x 8'10"
Bedroom 1	3.08m x 3.40m	10'1" x 11'2"
Bedroom 2	3.68m x 2.73m	12'1" x 8'11"
Total Internal Area	66.6m ²	717ft ²
Terrace	54.3m ²	584ft ²

Plot 109 - 1 Bedroom Apartment

Living/Dining Room	4.26m x 3.40m	14'0" x 11'2"
Kitchen	1.95m x 2.65m	6'5" x 8'8"
Bedroom	3.91m x 3.45m	12'10" x 11'4"
Total Internal Area	43.4m ²	467ft ²
Terrace	11.6m ²	124ft ²

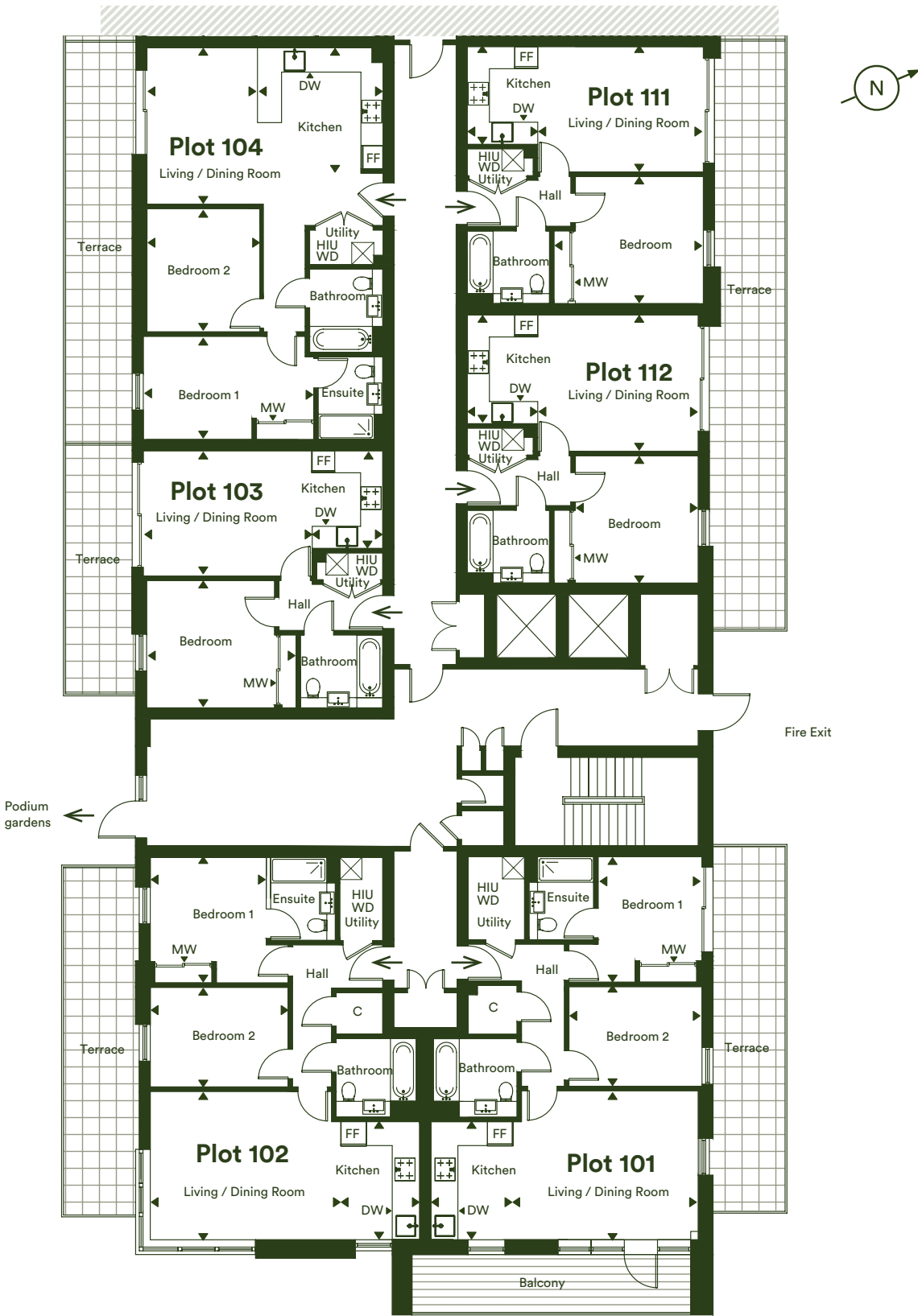
Plot 110 - 1 Bedroom Apartment

Living/Dining Room	4.26m x 3.40m	14'0" x 11'2"
Kitchen	1.95m x 2.65m	6'5" x 8'8"
Bedroom	3.91m x 3.45m	12'10" x 11'4"
Total Internal Area	43.4m ²	467ft ²
Terrace	11.6m ²	124ft ²

The floor plans provided are intended to only give a general indication of the proposed floor layout, are not drawn to scale and are not intended to form part of any offer, contract, warranty or representation. Measurements are given to the widest point, are approximate and are given as a guide only. They must not be relied upon as a statement or representation of fact. Do not use these measurements for carpet sizes, appliance spaces or items of furniture. Kitchen, bathroom and utility layouts may differ to build, and specific plot sizes and layouts may vary within the same unit type. Built-in wardrobe to include mirrored sliding doors, shelf and chrome hanging rail. For further clarification regarding specific individual plots, please ask our Sales Associates.

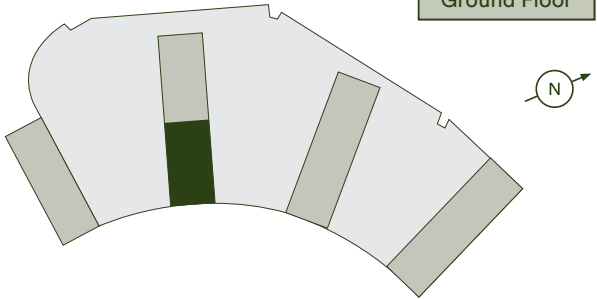
First Floor

Plots 101, 102, 103, 104, 111 & 112



FF - Fridge/Freezer | MW - Mirrored Wardrobe | DW - Dishwasher
HIU - Heat Interface Unit | WD - Washer Dryer | C - Cupboard

Tenth Floor
Ninth Floor
Eighth Floor
Seventh Floor
Sixth Floor
Fifth Floor
Fourth Floor
Third Floor
Second Floor
First Floor
Ground Floor



Plot 101 - 2 Bedroom Apartment

Living/Dining Room	4.90m x 4.05m	16'1" x 13'3"
Kitchen	2.30m x 3.20m	7'7" x 10'6"
Bedroom 1	3.19m x 3.40m	10'1" x 11'2"
Bedroom 2	3.85m x 2.70m	12'8" x 8'10"
Total Internal Area	70.2m ²	755ft ²
Terrace	19m ²	240ft ²
Balcony	11.1m ²	119ft ²

Plot 102 - 2 Bedroom Apartment

Living/Dining Room	5.23m x 4.02m	17'2" x 13'2"
Kitchen	1.97m x 3.18m	6'6" x 10'5"
Bedroom 1	3.08m x 3.40m	10'1" x 11'2"
Bedroom 2	3.87m x 2.70m	12'8" x 8'10"
Total Internal Area	70.2m ²	755ft ²
Terrace	18.3m ²	196ft ²

Plot 103 - 1 Bedroom Apartment

Living/Dining Room	4.26m x 3.40m	14'0" x 11'2"
Kitchen	1.95m x 2.65m	6'5" x 8'8"
Bedroom	3.91m x 3.45m	12'10" x 11'4"
Total Internal Area	43.4m ²	467ft ²
Terrace	11.6m ²	124ft ²

Plot 104 - 2 Bedroom Apartment

Living/Dining Room	3.64m x 4.24m	11'11" x 13'11"
Kitchen	2.57m x 3.28m	8' 5" x 10'9"
Bedroom 1	4.43m x 2.80m	14'6" x 9'2"
Bedroom 2	2.96m x 3.34m	9'9" x 10'11"
Total Internal Area	66m ²	710ft ²
Terrace	18m ²	193ft ²

Plot 111 - 1 Bedroom Apartment

Living/Dining Room	4.26m x 3.40m	14'0" x 11'2"
Kitchen	1.95m x 2.65m	6'5" x 8'8"
Bedroom	3.91m x 3.45m	12'10" x 11'4"
Total Internal Area	43.4m ²	467ft ²
Terrace	11.6m ²	124ft ²

Plot 112 - 1 Bedroom Apartment

Living/Dining Room	4.42m x 3.68m	14'6" x 12'1"
Kitchen	1.79m x 2.93m	5'10" x 9'7"
Bedroom	3.91m x 3.45m	12'10" x 11'4"
Total Internal Area	45m ²	484ft ²
Terrace	14.9m ²	182ft ²

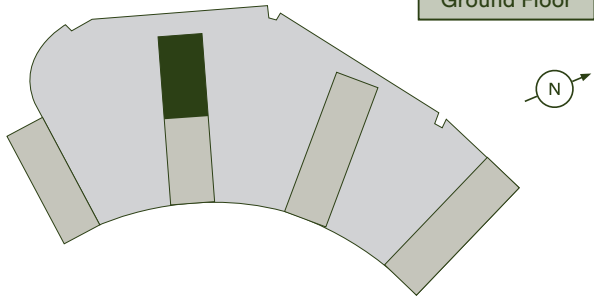
The floor plans provided are intended to only give a general indication of the proposed floor layout, are not drawn to scale and are not intended to form part of any offer, contract, warranty or representation. Measurements are given to the widest point, are approximate and are given as a guide only. They must not be relied upon as a statement or representation of fact. Do not use these measurements for carpet sizes, appliance spaces or items of furniture. Kitchen, bathroom and utility layouts may differ to build, and specific plot sizes and layouts may vary within the same unit type. Built-in wardrobe to include mirrored sliding doors, shelf and chrome hanging rail. For further clarification regarding specific individual plots, please ask our Sales Associates.

Second Floor

Plots 205, 206, 207, 208, 209 & 210



FF - Fridge/Freezer | MW - Mirrored Wardrobe | DW - Dishwasher
HIU - Heat Interface Unit | WD - Washer Dryer | C - Cupboard



Tenth Floor
Ninth Floor
Eighth Floor
Seventh Floor
Sixth Floor
Fifth Floor
Fourth Floor
Third Floor
Second Floor
First Floor
Ground Floor

Plot 205 - 2 Bedroom Apartment

Living/Dining Room	4.41m x 3.65m	14'6" x 12'0"
Kitchen	2.95m x 1.80m	9'8" x 5'11"
Bedroom 1	4.03m x 3.15m	13'3" x 10'4"
Bedroom 2	3.26m x 2.70m	10'8" x 8'10"
Total Internal Area	60.6m²	652ft²
Balcony	4.3m²	46.3ft²

Plot 206 - 1 Bedroom Apartment

Living/Dining Room	4.26m x 3.40m	14'0" x 1'2"
Kitchen	2.65m x 1.95m	8'8" x 6' 5"
Bedroom	3.91m x 3.45m	12'10" x 11'4"
Total Internal Area	43.4m²	467ft²
Balcony	4.3m²	46.3ft²

Plot 207 - 2 Bedroom Apartment

Living/Dining Room	4.71m x 3.52m	15'6" x 11'6"
Kitchen	2.73m x 2.49m	8'11" x 8'2"
Bedroom 1	3.40m x 3.08m	11'2" x 10'1"
Bedroom 2	3.68m x 2.73m	12'1" x 8'11"
Total Internal Area	66.5m²	716ft²
Balcony	11.2m²	120ft²

Plot 208 - 2 Bedroom Apartment

Living/Dining Room	4.78m x 3.52m	15'8" x 11'6"
Kitchen	2.68m x 2.12m	8'10" x 6'1"
Bedroom 1	3.40m x 3.08m	11'2" x 10'1"
Bedroom 2	3.68m x 2.73m	12'1" x 8'11"
Total Internal Area	66.6m²	717ft²
Balcony	11.2m²	120ft²

Plot 209 - 1 Bedroom Apartment

Living/Dining Room	4.26m x 3.40m	14'0" x 11'2"
Kitchen	2.65m x 1.95m	8'8" x 6' 5"
Bedroom	3.91m x 3.45m	12'10" x 11'4"
Total Internal Area	43.4m²	467ft²
Balcony	4.3m²	46.3ft²

Plot 210 - 1 Bedroom Apartment

Living/Dining Room	4.26m x 3.40m	14'0" x 11'2"
Kitchen	2.65m x 1.95m	8'8" x 6' 5"
Bedroom	3.91m x 3.45m	12'10" x 11'4"
Total Internal Area	43.4m²	467ft²
Balcony	4.3m²	46.3ft²

The floor plans provided are intended to only give a general indication of the proposed floor layout, are not drawn to scale and are not intended to form part of any offer, contract, warranty or representation. Measurements are given to the widest point, are approximate and are given as a guide only. They must not be relied upon as a statement or representation of fact. Do not use these measurements for carpet sizes, appliance spaces or items of furniture. Kitchen, bathroom and utility layouts may differ to build, and specific plot sizes and layouts may vary within the same unit type. Built-in wardrobe to include mirrored sliding doors, shelf and chrome hanging rail. For further clarification regarding specific individual plots, please ask our Sales Associates.

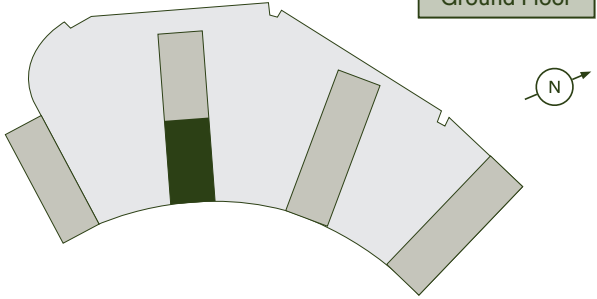
Second Floor

Plots 201, 202, 203, 204, 211 & 212



FF - Fridge/Freezer | MW - Mirrored Wardrobe | DW - Dishwasher
HIU - Heat Interface Unit | WD - Washer Dryer | C - Cupboard

Tenth Floor
Ninth Floor
Eighth Floor
Seventh Floor
Sixth Floor
Fifth Floor
Fourth Floor
Third Floor
Second Floor
First Floor
Ground Floor



Plot 201 - 2 Bedroom Apartment

Living/Dining Room	4.90m x 4.05m	16'1" x 13'3"
Kitchen	2.30m x 3.20m	7'7" x 10'6"
Bedroom 1	3.19m x 3.40m	10'1" x 11'2"
Bedroom 2	3.85m x 2.70m	12'8" x 8'10"
Total Internal Area	70.2m ²	755ft ²
Balcony	11.1m ²	119ft ²

Plot 202 - 2 Bedroom Apartment

Living/Dining Room	5.23m x 4.02m	17'2" x 13'2"
Kitchen	3.18m x 1.97m	10'5" x 6'6"
Bedroom 1	3.40m x 3.08m	11'2" x 10'1"
Bedroom 2	3.87m x 2.70m	12'8"10"
Total Internal Area	70.2m ²	755 sqft
Balcony	11.2m ²	120ft ²

Plot 203 - 2 Bedroom Apartment

Living/Dining Room	4.85m x 4.22m	15'11" x 13'10"
Kitchen	3.70m x 1.99m	12'2" x 6'6"
Bedroom 1	4.03m x 3.15m	13'3" x 10'4"
Bedroom 2	3.91m x 2.38m	12'10" x 7'10"
Total Internal Area	66m ²	710ft ²
Balcony	4.3m ²	46.3ft ²

Plot 204 - 2 Bedroom Apartment

Living/Dining Room	4.85m x 4.22m	15'11" x 13'10"
Kitchen	3.70m x 1.99m	12'2" x 6'6"
Bedroom 1	4.03m x 3.15m	13'3" x 0'4"
Bedroom 2	3.91m x 2.38m	12'10" x 7'10"
Total Internal Area	66m ²	710ft ²
Balcony	4.3m ²	46.3ft ²

Plot 211 - 1 Bedroom Apartment

Living/Dining Room	4.26m x 3.40m	14'0" x 11'2"
Kitchen	2.65m x 1.95m	8'8" x 6'5"
Bedroom	3.91m x 3.45m	12'10" x 11'4"
Total Internal Area	43.4m ²	467ft ²
Balcony	4.3m ²	46.3ft ²

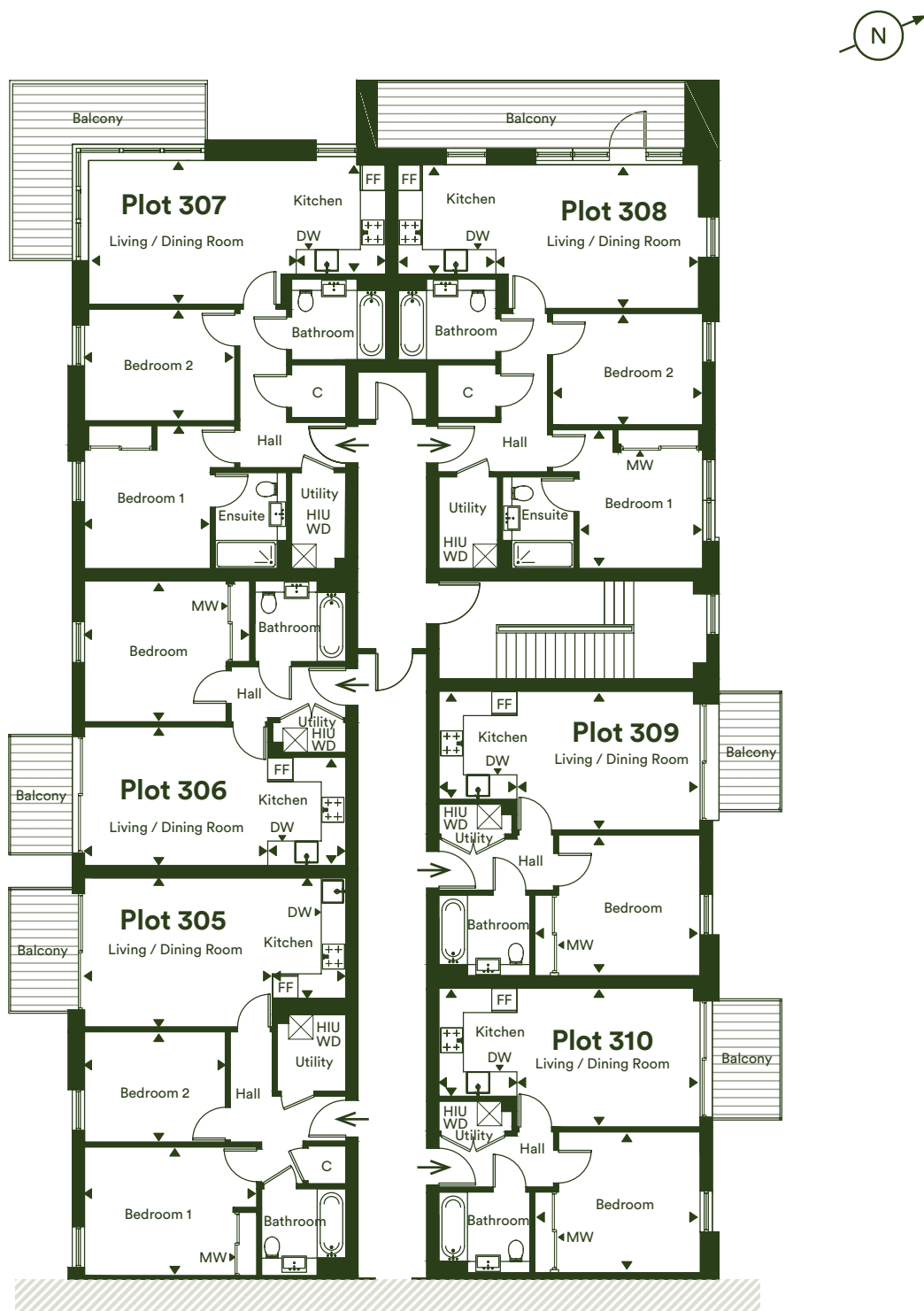
Plot 212 - 1 Bedroom Apartment

Living/Dining Room	4.36m x 3.98m	14'4" x 13'0"
Kitchen	2.73m x 1.85m	8'11" x 6'1"
Bedroom	3.91m x 3.15m	12'10" x 10'4"
Total Internal Area	44.9m ²	483ft ²
Balcony	4.3m ²	46.3ft ²

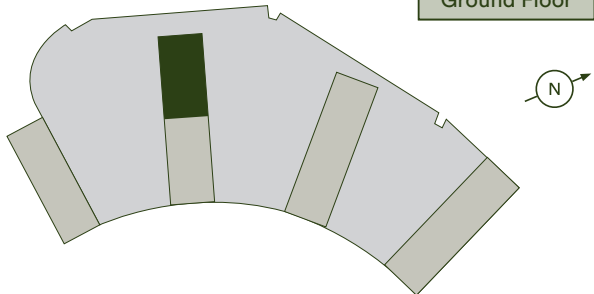
The floor plans provided are intended to only give a general indication of the proposed floor layout, are not drawn to scale and are not intended to form part of any offer, contract, warranty or representation. Measurements are given to the widest point, are approximate and are given as a guide only. They must not be relied upon as a statement or representation of fact. Do not use these measurements for carpet sizes, appliance spaces or items of furniture. Kitchen, bathroom and utility layouts may differ to build, and specific plot sizes and layouts may vary within the same unit type. Built-in wardrobe to include mirrored sliding doors, shelf and chrome hanging rail. For further clarification regarding specific individual plots, please ask our Sales Associates.

Third Floor

Plots 305, 306, 307, 308, 309 & 310



FF - Fridge/Freezer | MW - Mirrored Wardrobe | DW - Dishwasher
HIU - Heat Interface Unit | WD - Washer Dryer | C - Cupboard



Tenth Floor
Ninth Floor
Eighth Floor
Seventh Floor
Sixth Floor
Fifth Floor
Fourth Floor
Third Floor
Second Floor
First Floor
Ground Floor

Plot 305 - 2 Bedroom Apartment

Living/Dining Room	4.41m x 3.65m	14'6" x 12'0"
Kitchen	2.97m x 1.80m	9'8" x 5'11"
Bedroom 1	4.03m x 3.15m	13'3" x 10'4"
Bedroom 2	3.26m x 2.70m	10'8" x 8'10"
Total Internal Area	60.6m ²	652ft ²
Balcony	4.3m ²	46.3ft ²

Plot 306 - 1 Bedroom Apartment

Living/Dining Room	4.26m x 3.40m	14'0" x 11'2"
Kitchen	2.65m x 1.95m	8'8" x 6'5"
Bedroom	3.91m x 3.45m	12'10" x 11'4"
Total Internal Area	43.4m ²	467ft ²
Balcony	4.3m ²	46.3ft ²

Plot 307 - 2 Bedroom Apartment

Living/Dining Room	4.71m x 3.52m	15'6" x 11'6"
Kitchen	2.73m x 2.49m	8'11" x 8'2"
Bedroom 1	3.40m x 3.08m	11'2" x 10'1"
Bedroom 2	3.68m x 2.73m	12'1" x 8'11"
Total Internal Area	66.5m ²	716ft ²
Balcony	11.2m ²	120ft ²

Plot 308 - 2 Bedroom Apartment

Living/Dining Room	4.71m x 3.52m	15'6" x 11'6"
Kitchen	2.73m x 2.49m	8'11" x 8'2"
Bedroom 1	3.40m x 3.08m	11'2" x 10'1"
Bedroom 2	3.68m x 2.73m	12'1" x 8'11"
Total Internal Area	66.5m ²	716ft ²
Balcony	11.2m ²	120ft ²

Plot 309 - 1 Bedroom Apartment

Living/Dining Room	4.26m x 3.40m	14'0" x 11'2"
Kitchen	2.65m x 1.95m	8'8" x 6' 5"
Bedroom	3.91m x 3.45m	12'10" x 11'4"
Total Internal Area	43.4m ²	467ft ²
Balcony	4.3m ²	46.3ft ²

Plot 310 - 1 Bedroom Apartment

Living/Dining Room	4.26m x 3.40m	14'0" x 11'2"
Kitchen	2.65m x 1.95m	8'8" x 6'5"
Bedroom	3.91m x 3.35m	12'10" x 11'4"
Total Internal Area	43.4m ²	467ft ²
Balcony	4.3m ²	46.3ft ²

The floor plans provided are intended to only give a general indication of the proposed floor layout, are not drawn to scale and are not intended to form part of any offer, contract, warranty or representation. Measurements are given to the widest point, are approximate and are given as a guide only. They must not be relied upon as a statement or representation of fact. Do not use these measurements for carpet sizes, appliance spaces or items of furniture. Kitchen, bathroom and utility layouts may differ to build, and specific plot sizes and layouts may vary within the same unit type. Built-in wardrobe to include mirrored sliding doors, shelf and chrome hanging rail. For further clarification regarding specific individual plots, please ask our Sales Associates.

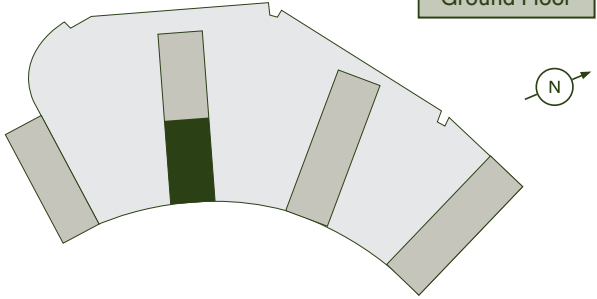
Third Floor

Plots 301, 302, 303, 304, 311 & 312



FF - Fridge/Freezer | MW - Mirrored Wardrobe | DW - Dishwasher
HIU - Heat Interface Unit | WD - Washer Dryer | C - Cupboard

Tenth Floor
Ninth Floor
Eighth Floor
Seventh Floor
Sixth Floor
Fifth Floor
Fourth Floor
Third Floor
Second Floor
First Floor
Ground Floor



Plot 301 - 2 Bedroom Apartment

Living/Dining Room	4.90m x 4.05m	16'1" x 13'3"
Kitchen	2.30m x 3.20m	7'7" x 10'6"
Bedroom 1	3.19m x 3.40m	10'1" x 11'2"
Bedroom 2	3.85m x 2.70m	12'8" x 8'10"
Total Internal Area	70.2m ²	755ft ²
Balcony	11.1m ²	119ft ²

Plot 302 - 2 Bedroom Apartment

Living/Dining Room	5.23m x 4.02m	17'2" x 13'2"
Kitchen	3.18m x 1.97m	10'5" x 6'6"
Bedroom 1	3.40m x 3.08m	11'2" x 10'1"
Bedroom 2	3.87m x 2.70m	12'8" x 8'10"
Total Internal Area	70.2m ²	755ft ²
Balcony	11.2m ²	120ft ²

Plot 303 - 2 Bedroom Apartment

Living/Dining Room	4.85m x 4.22m	15'11" x 13'10"
Kitchen	3.70m x 1.99m	12'2" x 6'6"
Bedroom 1	4.03m x 3.15m	13'3" x 10'4"
Bedroom 2	3.91m x 2.38m	12'10" x 7'10"
Total Internal Area	66m ²	710ft ²
Balcony	4.3m ²	46.3ft ²

Plot 304 - 2 Bedroom Apartment

Living/Dining Room	4.85m x 4.22m	15'11" x 13'10"
Kitchen	3.70m x 1.99m	12'2" x 6'6"
Bedroom 1	4.03m x 3.15m	13'3" x 10'4"
Bedroom 2	3.91m x 2.38m	12'10" x 7'10"
Total Internal Area	66m ²	710ft ²
Balcony	4.3m ²	46.3ft ²

Plot 311 - 1 Bedroom Apartment

Living/Dining Room	4.26m x 3.40m	14'0" x 11'2"
Kitchen	2.65m x 1.95m	8'8" x 6'5"
Bedroom	3.91m x 3.45m	12'10" x 11'4"
Total Internal Area	43.4m ²	467ft ²
Balcony	4.3m ²	46.3ft ²

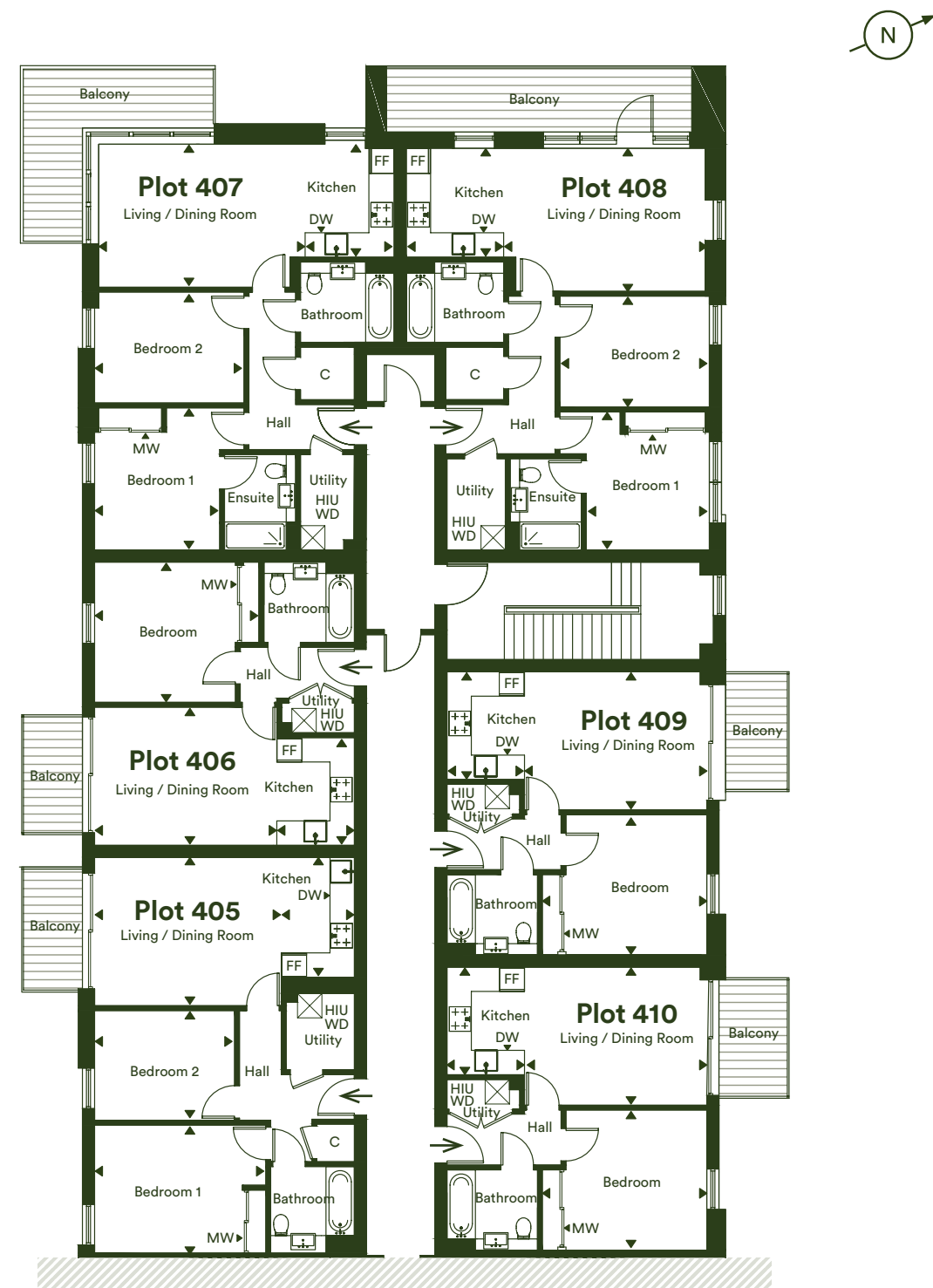
Plot 312 - 1 Bedroom Apartment

Living/Dining Room	4.36m x 3.98m	14'4" x 13'0"
Kitchen	2.73m x 1.85m	8'11" x 6'1"
Bedroom	3.91m x 3.15m	12'10" x 10'4"
Total Internal Area	44.9m ²	483ft ²
Balcony	4.3m ²	46.3ft ²

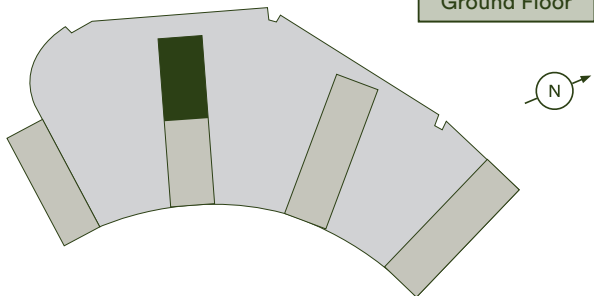
The floor plans provided are intended to only give a general indication of the proposed floor layout, are not drawn to scale and are not intended to form part of any offer, contract, warranty or representation. Measurements are given to the widest point, are approximate and are given as a guide only. They must not be relied upon as a statement or representation of fact. Do not use these measurements for carpet sizes, appliance spaces or items of furniture. Kitchen, bathroom and utility layouts may differ to build, and specific plot sizes and layouts may vary within the same unit type. Built-in wardrobe to include mirrored sliding doors, shelf and chrome hanging rail. For further clarification regarding specific individual plots, please ask our Sales Associates.

Fourth Floor

Plots 405, 406, 407, 408, 409 & 410



FF - Fridge/Freezer | MW - Mirrored Wardrobe | DW - Dishwasher
HIU - Heat Interface Unit | WD - Washer Dryer | C - Cupboard



Tenth Floor
Ninth Floor
Eighth Floor
Seventh Floor
Sixth Floor
Fifth Floor
Fourth Floor
Third Floor
Second Floor
First Floor
Ground Floor

Plot 405 - 2 Bedroom Apartment

Living/Dining Room	4.41m x 3.65m	14'6" x 12'0"
Kitchen	2.95m x 1.80m	9'8" x 5'11"
Bedroom 1	4.03m x 3.15m	13'3" x 10'4"
Bedroom 2	3.26m x 2.70m	10'8" x 8'10"
Total Internal Area	60.6m ²	652ft ²
Balcony	4.3m ²	46.3ft ²

Plot 406 - 1 Bedroom Apartment

Living/Dining Room	4.26m x 3.40m	14'0" x 11'2"
Kitchen	2.65m x 1.95m	8'8" x 6'5"
Bedroom	3.91m x 3.34m	12'10" x 11'4"
Total Internal Area	43.4m ²	467ft ²
Balcony	4.3m ²	46.3ft ²

Plot 407 - 2 Bedroom Apartment

Living/Dining Room	4.71m x 3.52m	15'6" x 11'6"
Kitchen	2.73 x 2.49m	8'11" x 8'2"
Bedroom 1	3.40 x 3.08m	11'2" x 10'1"
Bedroom 2	3.68m x 2.73m	12'1" x 8'11"
Total Internal Area	66.5m ²	716ft ²
Balcony	11.2m ²	120ft ²

Plot 408 - 2 Bedroom Apartment

Living/Dining Room	4.71m x 3.52m	15'6" x 11'6"
Kitchen	2.73m x 2.49m	8'11" x 8'2"
Bedroom 1	3.40m x 3.08m	11'2" x 10'1"
Bedroom 2	3.68m x 2.73m	12'1" x 8'11"
Total Internal Area	66.5m ²	716ft ²
Balcony	11.2m ²	120ft ²

Plot 409 - 1 Bedroom Apartment

Living/Dining Room	4.26m x 3.40m	14'0" x 11'2"
Kitchen	2.65m x 1.95m	8'8" x 6'5"
Bedroom	3.91m x 3.34m	12'10" x 11'4"
Total Internal Area	43.4m ²	467ft ²
Balcony	4.3m ²	46.3ft ²

Plot 410 - 1 Bedroom Apartment

Living/Dining Room	4.26m x 3.40m	14'0" x 11'2"
Kitchen	2.65m x 1.95m	8'8" x 6'5"
Bedroom	3.91m x 3.34m	12'10" x 11'4"
Total Internal Area	43.4m ²	467ft ²
Balcony	4.3m ²	46.3ft ²

The floor plans provided are intended to only give a general indication of the proposed floor layout, are not drawn to scale and are not intended to form part of any offer, contract, warranty or representation. Measurements are given to the widest point, are approximate and are given as a guide only. They must not be relied upon as a statement or representation of fact. Do not use these measurements for carpet sizes, appliance spaces or items of furniture. Kitchen, bathroom and utility layouts may differ to build, and specific plot sizes and layouts may vary within the same unit type. Built-in wardrobe to include mirrored sliding doors, shelf and chrome hanging rail. For further clarification regarding specific individual plots, please ask our Sales Associates.

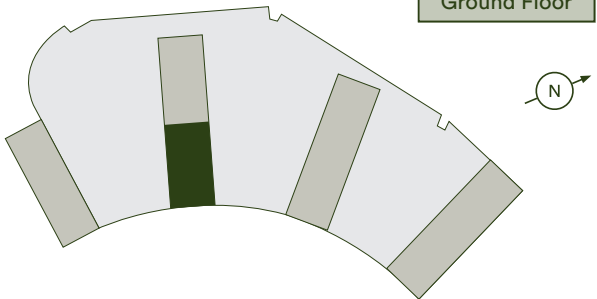
Fourth Floor

Plots 401, 402, 403, 404, 411 & 412



FF - Fridge/Freezer | MW - Mirrored Wardrobe | DW - Dishwasher
HIU - Heat Interface Unit | WD - Washer Dryer | C - Cupboard

Tenth Floor
Ninth Floor
Eighth Floor
Seventh Floor
Sixth Floor
Fifth Floor
Fourth Floor
Third Floor
Second Floor
First Floor
Ground Floor



Plot 401 - 2 Bedroom Apartment

Living/Dining Room	4.90m x 4.05m	16'1" x 13'3"
Kitchen	3.20m x 2.30m	10'6" x 7'7"
Bedroom 1	3.40m x 3.10m	11'2" x 10'1"
Bedroom 2	3.85m x 2.70m	12'8" x 8'10"
Total Internal Area	70.2m²	755ft²
Balcony	11.2m²	120ft²

Plot 402 - 2 Bedroom Apartment

Living/Dining Room	5.23m x 4.04m	17'2" x 13'2"
Kitchen	3.18m x 1.97m	10'5" x 6'6"
Bedroom 1	3.40m x 3.08m	11'2" x 10'1"
Bedroom 2	3.87m x 2.70m	12'8" x 8'10"
Total Internal Area	70.2m²	755ft²
Balcony	11.2m²	120ft²

Plot 403 - 2 Bedroom Apartment

Living/Dining Room	4.85m x 4.22m	15'11" x 13'10"
Kitchen	3.70m x 1.99m	12'2" x 6'6"
Bedroom 1	4.03m x 3.15m	13'3" x 10'4"
Bedroom 2	3.91m x 2.38m	12'10" x 7'10"
Total Internal Area	66m²	710ft²
Balcony	4.3m²	46.3ft²

Plot 404 - 2 Bedroom Apartment

Living/Dining Room	4.85m x 4.22m	15'11" x 13'10"
Kitchen	3.70m x 1.99m	12'2" x 6'6"
Bedroom 1	4.03m x 3.15m	13'3" x 10'4"
Bedroom 2	3.91m x 2.38m	12'10" x 7'10"
Total Internal Area	66m²	710ft²
Balcony	4.3m²	46.3ft²

Plot 411 - 1 Bedroom Apartment

Living/Dining Room	4.26m x 3.40m	14'0" x 11'2"
Kitchen	2.65m x 1.95m	8'8" x 6'5"
Bedroom	3.91m x 3.34m	12'10" x 11'4"
Total Internal Area	43.4m²	467ft²
Balcony	4.3m²	46.3ft²

Plot 412 -1 Bedroom Apartment

Living/Dining Room	4.42m x 3.68m	14'6" x 12'1"
Kitchen	2.93m x 1.79m	9'7" x 5'10"
Bedroom	3.91m x 3.45m	12'10" x 11'4"
Total Internal Area	45m²	484ft²
Balcony	4.3m²	46.3ft²

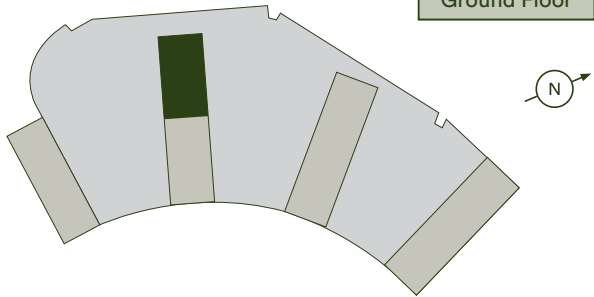
The floor plans provided are intended to only give a general indication of the proposed floor layout, are not drawn to scale and are not intended to form part of any offer, contract, warranty or representation. Measurements are given to the widest point, are approximate and are given as a guide only. They must not be relied upon as a statement or representation of fact. Do not use these measurements for carpet sizes, appliance spaces or items of furniture. Kitchen, bathroom and utility layouts may differ to build, and specific plot sizes and layouts may vary within the same unit type. Built-in wardrobe to include mirrored sliding doors, shelf and chrome hanging rail. For further clarification regarding specific individual plots, please ask our Sales Associates.

Fifth Floor

Plots 505, 506, 507, 508, 509 & 510



FF - Fridge/Freezer | MW - Mirrored Wardrobe | DW - Dishwasher
HIU - Heat Interface Unit | WD - Washer Dryer | C - Cupboard



Tenth Floor
Ninth Floor
Eighth Floor
Seventh Floor
Sixth Floor
Fifth Floor
Fourth Floor
Third Floor
Second Floor
First Floor
Ground Floor

Plot 505 - 2 Bedroom Apartment

Living/Dining Room	4.41m x 3.65m	14'6" x 12'0"
Kitchen	2.95m x 1.80m	9'8" x 5'11"
Bedroom 1	4.03m x 3.15m	13'3" x 10'4"
Bedroom 2	3.26m x 2.70 m	10'8" x 8'10"
Total Internal Area	60.6m²	652ft²
Balcony	4.3m²	46.3ft²

Plot 506 - 1 Bedroom Apartment

Living/Dining Room	4.26m x 3.40m	14'0" x 11'2"
Kitchen	2.65m x 1.95m	8'8" x 6' 5"
Bedroom	3.91m x 3.34m	12'10" x 11'4"
Total Internal Area	43.4m²	467ft²
Balcony	4.3m²	46.3ft²

Plot 507 - 2 Bedroom Apartment

Living/Dining Room	4.71m x 3.52m	15'6" x 11'6"
Kitchen	2.73m x 2.49m	8'11" x 8'2"
Bedroom 1	3.40m x 3.08m	11'2" x 10'1"
Bedroom 2	3.68m x 2.73m	12'1" x 8'11"
Total Internal Area	66.5m²	716ft²
Balcony	11.2m²	120ft²

Plot 508 - 2 Bedroom Apartment

Living/Dining Room	4.71m x 3.52m	15'6" x 11'6"
Kitchen	2.73m x 2.49m	8'11" x 8'2"
Bedroom 1	3.40m x 3.08m	11'2" x 10'1"
Bedroom 2	3.68m x 2.73m	12'1" x 8'11"
Total Internal Area	66.5m²	716ft²
Balcony	11.2m²	120ft²

Plot 509 - 1 Bedroom Apartment

Living/Dining Room	4.26m x 3.40m	14'0" x 11'2"
Kitchen	2.65m x 1.95m	8'8" x 6'5"
Bedroom	3.91m x 3.34m	12'10" x 11'4"
Total Internal Area	43.4m²	467ft²
Balcony	4.3m²	46.3ft²

Plot 510 - 1 Bedroom Apartment

Living/Dining Room	4.26m x 3.40m	14'0" x 11'2"
Kitchen	2.65m x 1.95m	8'8" x 6'5"
Bedroom	3.91m x 3.34m	12'10" x 11'4"
Total Internal Area	43.4m²	467ft²
Balcony	4.3m²	46.3ft²

The floor plans provided are intended to only give a general indication of the proposed floor layout, are not drawn to scale and are not intended to form part of any offer, contract, warranty or representation. Measurements are given to the widest point, are approximate and are given as a guide only. They must not be relied upon as a statement or representation of fact. Do not use these measurements for carpet sizes, appliance spaces or items of furniture. Kitchen, bathroom and utility layouts may differ to build, and specific plot sizes and layouts may vary within the same unit type. Built-in wardrobe to include mirrored sliding doors, shelf and chrome hanging rail. For further clarification regarding specific individual plots, please ask our Sales Associates.

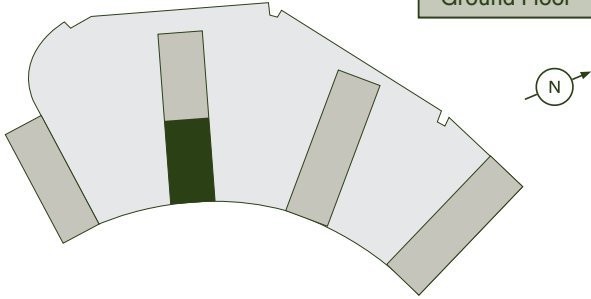
Fifth Floor

Plots 501, 502, 503, 504, 511 & 512



FF - Fridge/Freezer | MW - Mirrored Wardrobe | DW - Dishwasher
HIU - Heat Interface Unit | WD - Washer Dryer | C - Cupboard

Tenth Floor
Ninth Floor
Eighth Floor
Seventh Floor
Sixth Floor
Fifth Floor
Fourth Floor
Third Floor
Second Floor
First Floor
Ground Floor



Plot 501 - 2 Bedroom Apartment

Living/Dining Room	4.90m x 4.05m	16'1" x 13'3"
Kitchen	3.20m x 2.30m	10'6" x 7'7"
Bedroom 1	3.40m x 3.10m	11'2" x 10'1"
Bedroom 2	3.85m x 2.70m	12'8" x 8'10"
Total Internal Area	70.2m²	755ft²
Balcony	11.2m²	120ft²

Plot 502 - 2 Bedroom Apartment

Living/Dining Room	5.23m x 4.04m	17'2" x 13'2"
Kitchen	3.18m x 1.97m	10'5" x 6'6"
Bedroom 1	3.40m x 3.08m	11'2" x 10'1"
Bedroom 2	3.87m x 2.70m	12'8" x 8'10"
Total Internal Area	70.2m²	755ft²
Balcony	11.2m²	120ft²

Plot 503 - 2 Bedroom Apartment

Living/Dining Room	4.85m x 4.22m	15'11" x 13'10"
Kitchen	3.70m x 1.99m	12'2" x 6'6"
Bedroom 1	4.03m x 3.15m	13'3" x 10'4"
Bedroom 2	3.91m x 2.38m	12'10" x 7'10"
Total Internal Area	66m²	710ft²
Balcony	4.3m²	46.3ft²

Plot 504 - 2 Bedroom Apartment

Living/Dining Room	4.85m x 4.22m	15'11" x 13'10"
Kitchen	3.70m x 1.99m	12'2" x 6'6"
Bedroom 1	4.03m x 3.15m	13'3" x 10'4"
Bedroom 2	3.91m x 2.38m	12'10" x 7'10"
Total Internal Area	66m²	710ft²
Balcony	4.3m²	46.3ft²

Plot 511 - 1 Bedroom Apartment

Living/Dining Room	4.26m x 3.40m	14'0" x 11'2"
Kitchen	2.65m x 1.95m	8'8" x 6'5"
Bedroom	3.91m x 3.34m	12'10" x 11'4"
Total Internal Area	43.4m²	467ft²
Balcony	4.3m²	46.3ft²

Plot 512 - 1 Bedroom Apartment

Living/Dining Room	4.42m x 3.68m	14'6" x 12'1"
Kitchen	2.93m x 1.79m	9'7" x 5'10"
Bedroom	3.91m x 3.45m	12'10" x 11'4"
Total Internal Area	45m²	484ft²
Balcony	4.3m²	46.3ft²

The floor plans provided are intended to only give a general indication of the proposed floor layout, are not drawn to scale and are not intended to form part of any offer, contract, warranty or representation. Measurements are given to the widest point, are approximate and are given as a guide only. They must not be relied upon as a statement or representation of fact. Do not use these measurements for carpet sizes, appliance spaces or items of furniture. Kitchen, bathroom and utility layouts may differ to build, and specific plot sizes and layouts may vary within the same unit type. Built-in wardrobe to include mirrored sliding doors, shelf and chrome hanging rail. For further clarification regarding specific individual plots, please ask our Sales Associates.

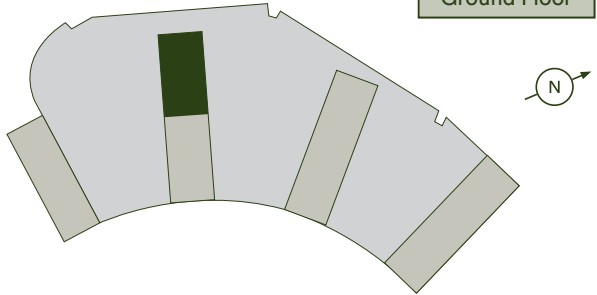
Sixth Floor

Plots 605, 606, 607, 608, 609 & 610



FF - Fridge/Freezer | MW - Mirrored Wardrobe | DW - Dishwasher
HIU - Heat Interface Unit | WD - Washer Dryer | C - Cupboard

Tenth Floor
Ninth Floor
Eighth Floor
Seventh Floor
Sixth Floor
Fifth Floor
Fourth Floor
Third Floor
Second Floor
First Floor
Ground Floor



Plot 605 - 2 Bedroom Apartment

Living/Dining Room	4.41m x 3.65m	14'6" x 12'0"
Kitchen	2.95m x 1.80m	9'8" x 5'11"
Bedroom 1	4.03mx 3.15m	13'3" x 10'4"
Bedroom 2	3.26m x 2.70m	10'8" x 8'10"
Total Internal Area	60.6m²	652ft²
Balcony	4.3m²	46.3ft²

Plot 606 - 1 Bedroom Apartment

Living/Dining Room	4.26m x 3.40m	14'0" x 11'2"
Kitchen	2.65m x 1.95m	8'8" x 6'5"
Bedroom	3.91m x 3.34m	12'10" x 11'4"
Total Internal Area	43.4m²	467ft²
Balcony	4.3m²	46.3ft²

Plot 607 - 2 Bedroom Apartment

Living/Dining Room	4.71m x 3.52m	15'6" x 11'6"
Kitchen	2.73m x 2.49m	8'11" x 8'2"
Bedroom 1	3.40m x 3.08m	11'2" x 10'1"
Bedroom 2	3.68m x 2.73m	12'1" x 8'11"
Total Internal Area	66.5m²	716ft²
Balcony	11.2m²	120ft²

Plot 608 - 2 Bedroom Apartment

Living/Dining Room	4.71m x 3.52m	15'6" x 11'6"
Kitchen	2.73m x 2.49m	8'11" x 8'2"
Bedroom 1	3.40m x 3.08m	11'2" x 10'1"
Bedroom 2	3.68m x 2.73m	12'1" x 8'11"
Total Internal Area	66.5m²	716ft²
Balcony	11.2m²	120ft²

Plot 609 - 1 Bedroom Apartment

Living/Dining Room	4.26m x 3.40m	14'0" x 11'2"
Kitchen	2.65m x 1.95m	8'8" x 6'5"
Bedroom	3.91m x 3.34m	12'10" x 11'4"
Total Internal Area	43.4m²	467ft²
Balcony	4.3m²	46.3ft²

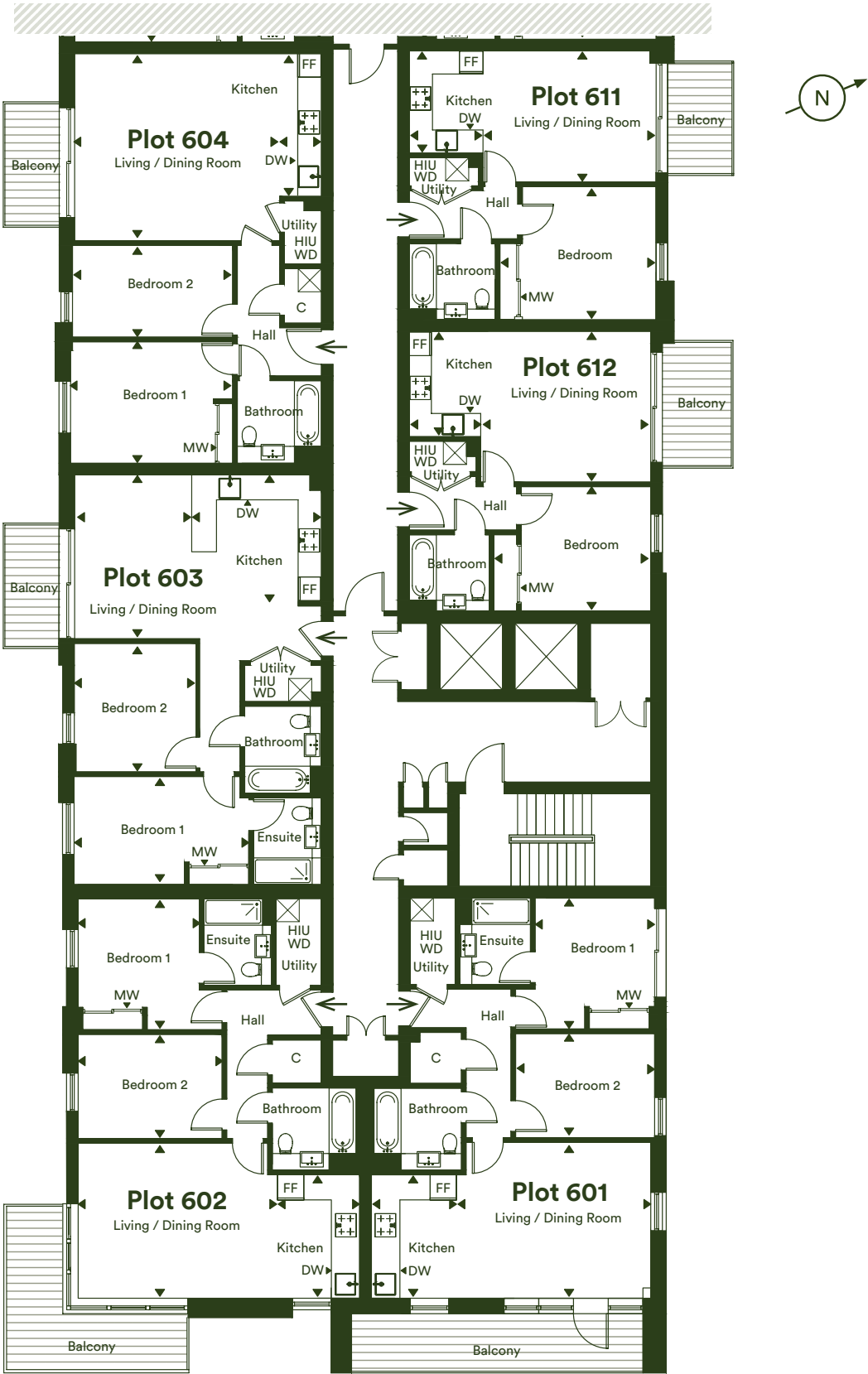
Plot 610 - 1 Bedroom Apartment

Living/Dining Room	4.26m x 3.40m	14'0" x 11'2"
Kitchen	2.65m x 1.95m	8'8" x 6'5"
Bedroom	3.91m x 3.34m	12'10" x 11'4"
Total Internal Area	43.4m²	467ft²
Balcony	4.3m²	46.3ft²

The floor plans provided are intended to only give a general indication of the proposed floor layout, are not drawn to scale and are not intended to form part of any offer, contract, warranty or representation. Measurements are given to the widest point, are approximate and are given as a guide only. They must not be relied upon as a statement or representation of fact. Do not use these measurements for carpet sizes, appliance spaces or items of furniture. Kitchen, bathroom and utility layouts may differ to build, and specific plot sizes and layouts may vary within the same unit type. Built-in wardrobe to include mirrored sliding doors, shelf and chrome hanging rail. For further clarification regarding specific individual plots, please ask our Sales Associates.

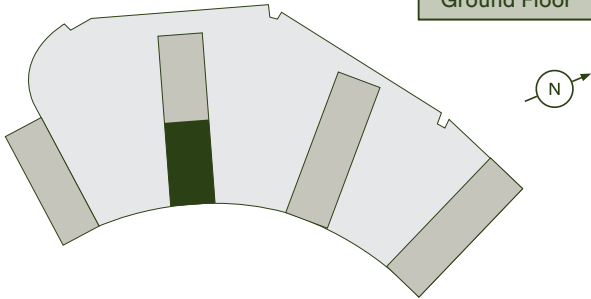
Sixth Floor

Plots 601, 602, 603, 604, 611 & 612



FF - Fridge/Freezer | MW - Mirrored Wardrobe | DW - Dishwasher
HIU - Heat Interface Unit | WD - Washer Dryer | C - Cupboard

Tenth Floor
Ninth Floor
Eighth Floor
Seventh Floor
Sixth Floor
Fifth Floor
Fourth Floor
Third Floor
Second Floor
First Floor
Ground Floor



Plot 601 - 2 Bedroom Apartment

Living/Dining Room	4.90m x 4.05m	16'1" x 13'3"
Kitchen	3.20m x 2.30m	10'6" x 7'7"
Bedroom 1	3.40m x 3.10m	11'2" x 10'1"
Bedroom 2	3.85m x 2.70m	12'8" x 8'10"
Total Internal Area	70.2m²	755ft²
Balcony	11.2m²	120ft²

Plot 602 - 2 Bedroom Apartment

Living/Dining Room	5.23m x 4.02m	17'2" x 13'2"
Kitchen	3.18m x 1.97m	10'5" x 6'6"
Bedroom 1	3.40m x 3.08m	11'2" x 10'1"
Bedroom 2	3.87m x 2.70m	12'8" x 8'10"
Total Internal Area	70.2m²	755ft²
Balcony	11.2m²	120ft²

Plot 603 - 2 Bedroom Apartment

Living/Dining Room	4.24m x 3.64m	13'11" x 11'11"
Kitchen	3.28m x 2.57m	10'9" x 8' 5"
Bedroom 1	4.43m x 2.80m	14'6" x 9'2"
Bedroom 2	3.34m x 2.96m	10'11" x 9'9"
Total Internal Area	66m²	710ft²
Balcony	4.3m²	46.3ft²

Plot 604 - 2 Bedroom Apartment

Living/Dining Room	4.85m x 4.22m	15'11" x 13'10"
Kitchen	3.70m x 1.99m	12'2" x 6'6"
Bedroom 1	4.03m x 3.15m	13'3" x 10'4"
Bedroom 2	3.91m x 2.38m	12'10" x 7'10"
Total Internal Area	66m²	710ft²
Balcony	4.3m²	46.3ft²

Plot 611 - 1 Bedroom Apartment

Living/Dining Room	4.26m x 3.40m	14'0" x 11'2"
Kitchen	2.65m x 1.95m	8'8" x 6' 5"
Bedroom	3.91m x 3.34m	12'10" x 11'4"
Total Internal Area	43.4m²	467ft²
Balcony	4.3m²	46.3ft²

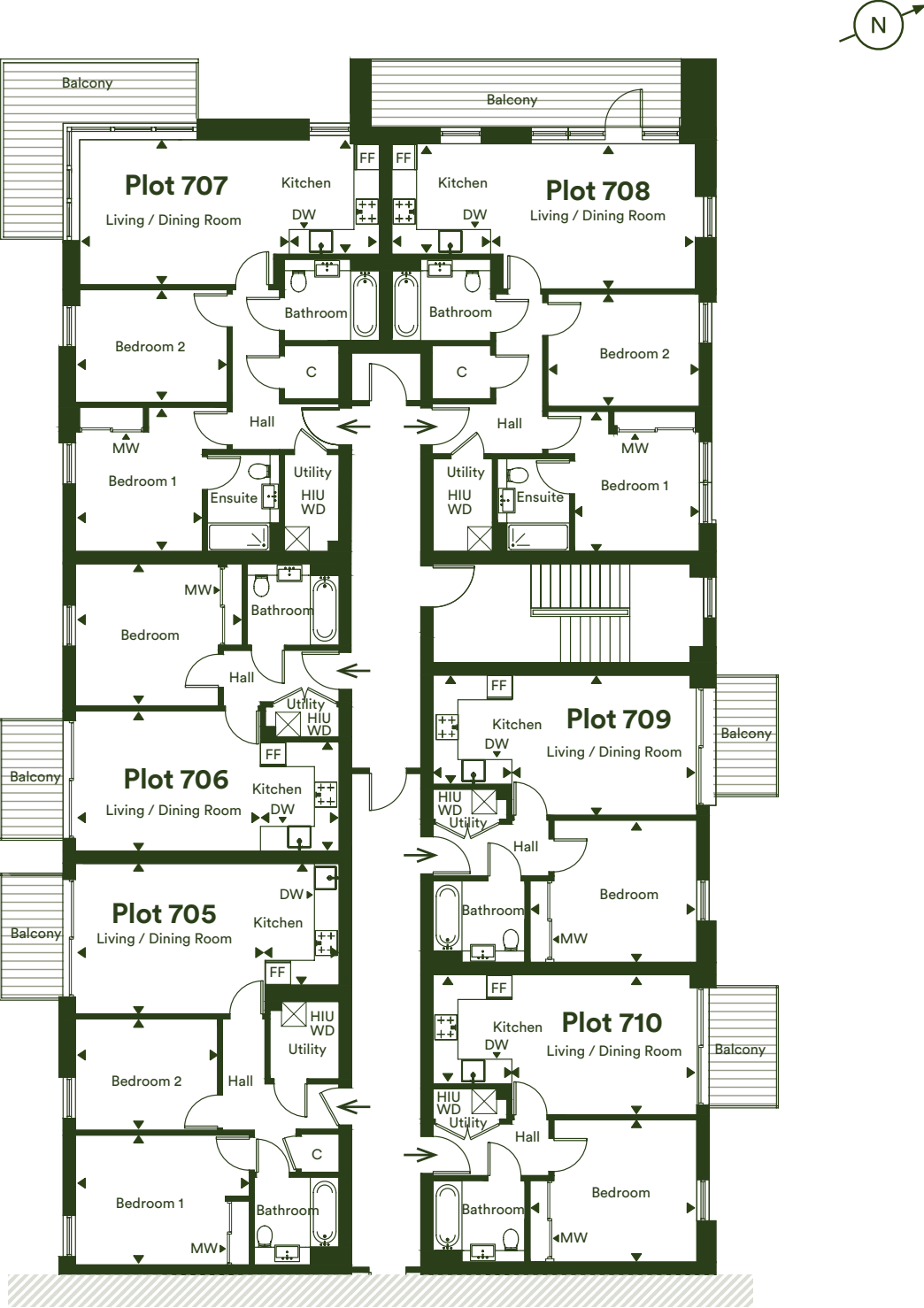
Plot 612 - 1 Bedroom Apartment

Living/Dining Room	4.42m x 3.68m	14'6" x 12'1"
Kitchen	2.93m x 1.79m	9'7" x 5'10"
Bedroom	3.91m x 3.45m	12'10" x 11'4"
Total Internal Area	45m²	484ft²
Balcony	4.3m²	46.3ft²

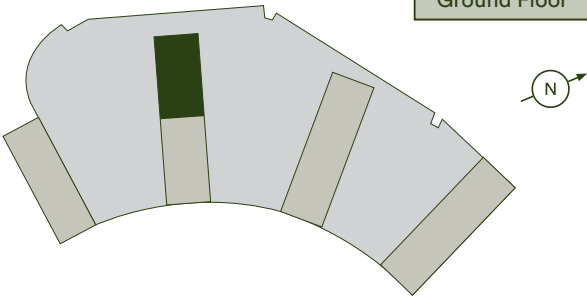
The floor plans provided are intended to only give a general indication of the proposed floor layout, are not drawn to scale and are not intended to form part of any offer, contract, warranty or representation. Measurements are given to the widest point, are approximate and are given as a guide only. They must not be relied upon as a statement or representation of fact. Do not use these measurements for carpet sizes, appliance spaces or items of furniture. Kitchen, bathroom and utility layouts may differ to build, and specific plot sizes and layouts may vary within the same unit type. Built-in wardrobe to include mirrored sliding doors, shelf and chrome hanging rail. For further clarification regarding specific individual plots, please ask our Sales Associates.

Seventh Floor

Plots 705, 706, 707, 708, 709 & 710



FF - Fridge/Freezer | MW - Mirrored Wardrobe | DW - Dishwasher
HIU - Heat Interface Unit | WD - Washer Dryer | C - Cupboard



Tenth Floor
Ninth Floor
Eighth Floor
Seventh Floor
Sixth Floor
Fifth Floor
Fourth Floor
Third Floor
Second Floor
First Floor
Ground Floor

Plot 705 - 2 Bedroom Apartment

Living/Dining Room	4.41m x 3.65m	14'6" x 12'0"
Kitchen	2.95m x 1.80m	9'8" x 5'11"
Bedroom 1	4.03m x 3.15m	13'3" x 10'4"
Bedroom 2	3.26m x 2.70m	10'8" x 8'10"
Total Internal Area	60.6m²	652ft²
Balcony	4.3m²	46.3ft²

Plot 706 - 1 Bedroom Apartment

Living/Dining Room	4.26m x 3.40m	14'0" x 11'2"
Kitchen	2.65m x 1.95m	8'8" x 6'5"
Bedroom	3.91m x 3.34m	12'10" x 11'4"
Total Internal Area	43.4m²	467ft²
Balcony	4.3m²	46.3ft²

Plot 707 - 2 Bedroom Apartment

Living/Dining Room	4.71m x 3.52m	15'6" x 11'6"
Kitchen	2.73m x 2.49m	8'11" x 8'2"
Bedroom 1	3.40m x 3.08m	11'2" x 10'1"
Bedroom 2	3.68m x 2.73m	12'1" x 8'11"
Total Internal Area	66.5m²	716ft²
Balcony	11.2m²	120ft²

Plot 708 - 2 Bedroom Apartment

Living/Dining Room	4.71m x 3.52m	15'6" x 11'6"
Kitchen	2.73m x 2.49m	8'11" x 8'2"
Bedroom 1	3.40m x 3.08m	11'2" x 10'1"
Bedroom 2	3.68m x 2.73m	12'1" x 8'11"
Total Internal Area	66.5m²	716ft²
Balcony	11.2m²	120ft²

Plot 709 - 1 Bedroom Apartment

Living/Dining Room	4.26m x 3.40m	14'0" x 11'2"
Kitchen	2.65m x 1.95m	8'8" x 6'5"
Bedroom	3.91m x 3.34m	12'10" x 11'4"
Total Internal Area	43.4m²	467ft²
Balcony	4.3m²	46.3ft²

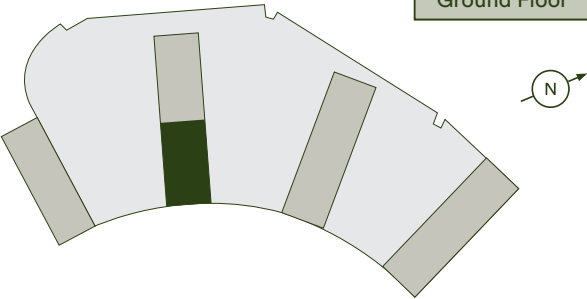
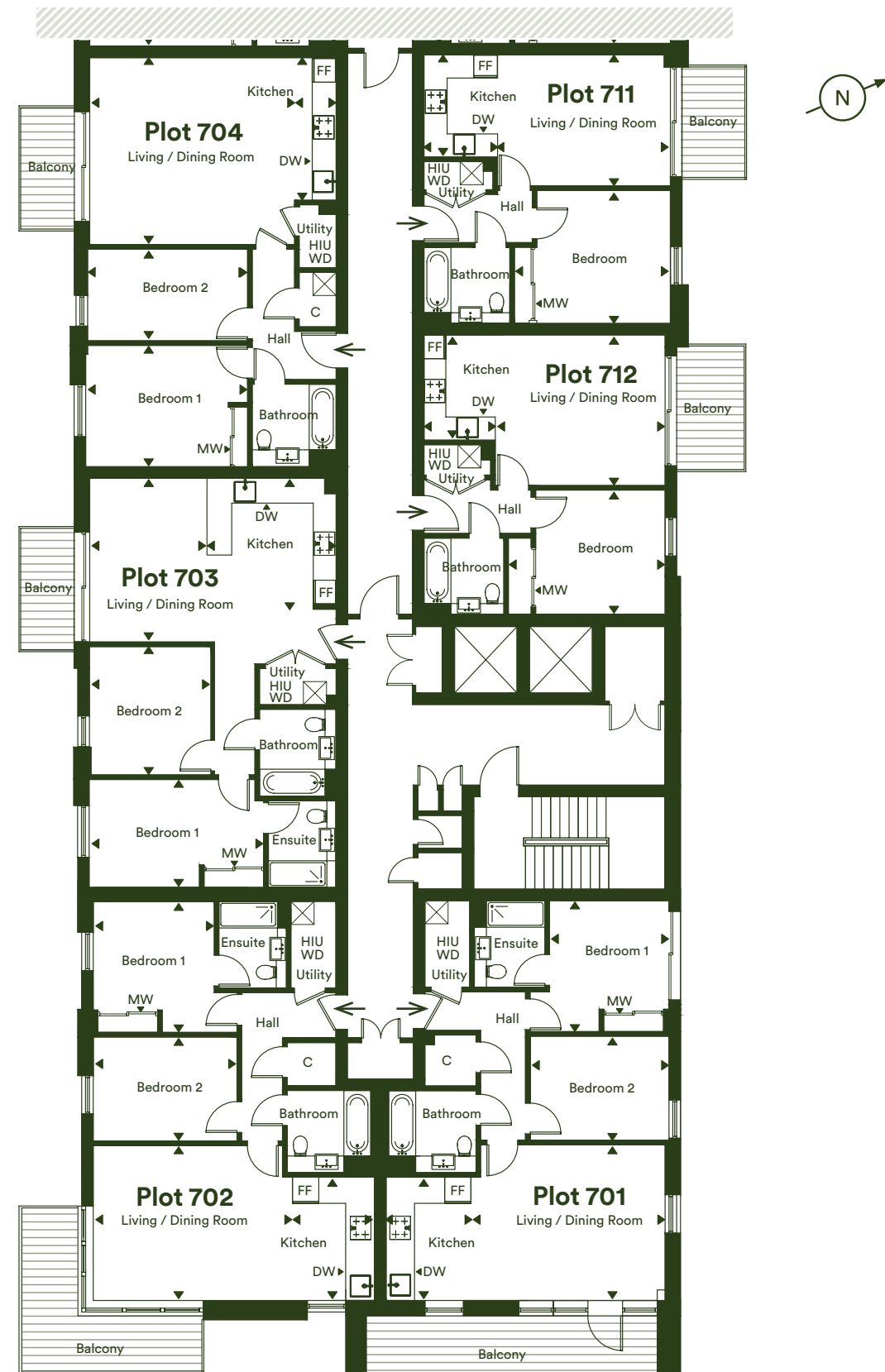
Plot 710 - 1 Bedroom Apartment

Living/Dining Room	4.26m x 3.40m	14'0" x 11'2"
Kitchen	2.65m x 1.95m	8'8" x 6'5"
Bedroom	3.91m x 3.34m	12'10" x 11'4"
Total Internal Area	43.4m²	467ft²
Balcony	4.3m²	46.3ft²

The floor plans provided are intended to only give a general indication of the proposed floor layout, are not drawn to scale and are not intended to form part of any offer, contract, warranty or representation. Measurements are given to the widest point, are approximate and are given as a guide only. They must not be relied upon as a statement or representation of fact. Do not use these measurements for carpet sizes, appliance spaces or items of furniture. Kitchen, bathroom and utility layouts may differ to build, and specific plot sizes and layouts may vary within the same unit type. Built-in wardrobe to include mirrored sliding doors, shelf and chrome hanging rail. For further clarification regarding specific individual plots, please ask our Sales Associates.

Seventh Floor

Plots 701, 702, 703, 704, 711 & 712



Tenth Floor
Ninth Floor
Eighth Floor
Seventh Floor
Sixth Floor
Fifth Floor
Fourth Floor
Third Floor
Second Floor
First Floor
Ground Floor

Plot 701 - 2 Bedroom Apartment

Living/Dining Room	4.90m x 4.05m	16'1" x 13'3"
Kitchen	3.20m x 2.30m	10'6" x 7'7"
Bedroom 1	3.40m x 3.10m	11'2" x 10'1"
Bedroom 2	3.85m x 2.70m	12'8" x 8'10"
Total Internal Area	70.2m ²	755ft ²
Balcony	11.2m ²	120ft ²

Plot 702 - 2 Bedroom Apartment

Living/Dining Room	5.23m x 4.02m	17'2" x 13'2"
Kitchen	3.18m x 1.97m	10'5" x 6'6"
Bedroom 1	3.40m x 3.08m	11'2" x 10'1"
Bedroom 2	3.87m x 2.70m	12'8" x 8'10"
Total Internal Area	70.2m ²	755ft ²
Balcony	11.2m ²	120ft ²

Plot 703 - 2 Bedroom Apartment

Living/Dining Room	4.24m x 3.64m	13'11" x 11'11"
Kitchen	3.28m x 2.57m	10'9" x 8'5"
Bedroom 1	4.43m x 2.80m	14'6" x 9'2"
Bedroom 2	3.34m x 2.96m	10'11" x 9'9"
Total Internal Area	66m ²	710ft ²
Balcony	4.3m ²	46.3ft ²

Plot 704 - 2 Bedroom Apartment

Living/Dining Room	4.82m x 4.22m	15'11" x 13'10"
Kitchen	3.70m x 1.99m	12'2" x 6'6"
Bedroom 1	4.03m x 3.15m	13'3" x 10'4"
Bedroom 2	3.91m x 2.38m	12'10" x 7'10"
Total Internal Area	66m ²	710ft ²
Balcony	4.4m ²	46.3ft ²

Plot 711 - 1 Bedroom Apartment

Living/Dining Room	4.26m x 3.40m	14'0" x 11'2"
Kitchen	2.65m x 1.95m	8'8" x 6'5"
Bedroom	3.91m x 3.34m	12'10" x 11'4"
Total Internal Area	43.4m ²	467ft ²
Balcony	4.3m ²	46.3ft ²

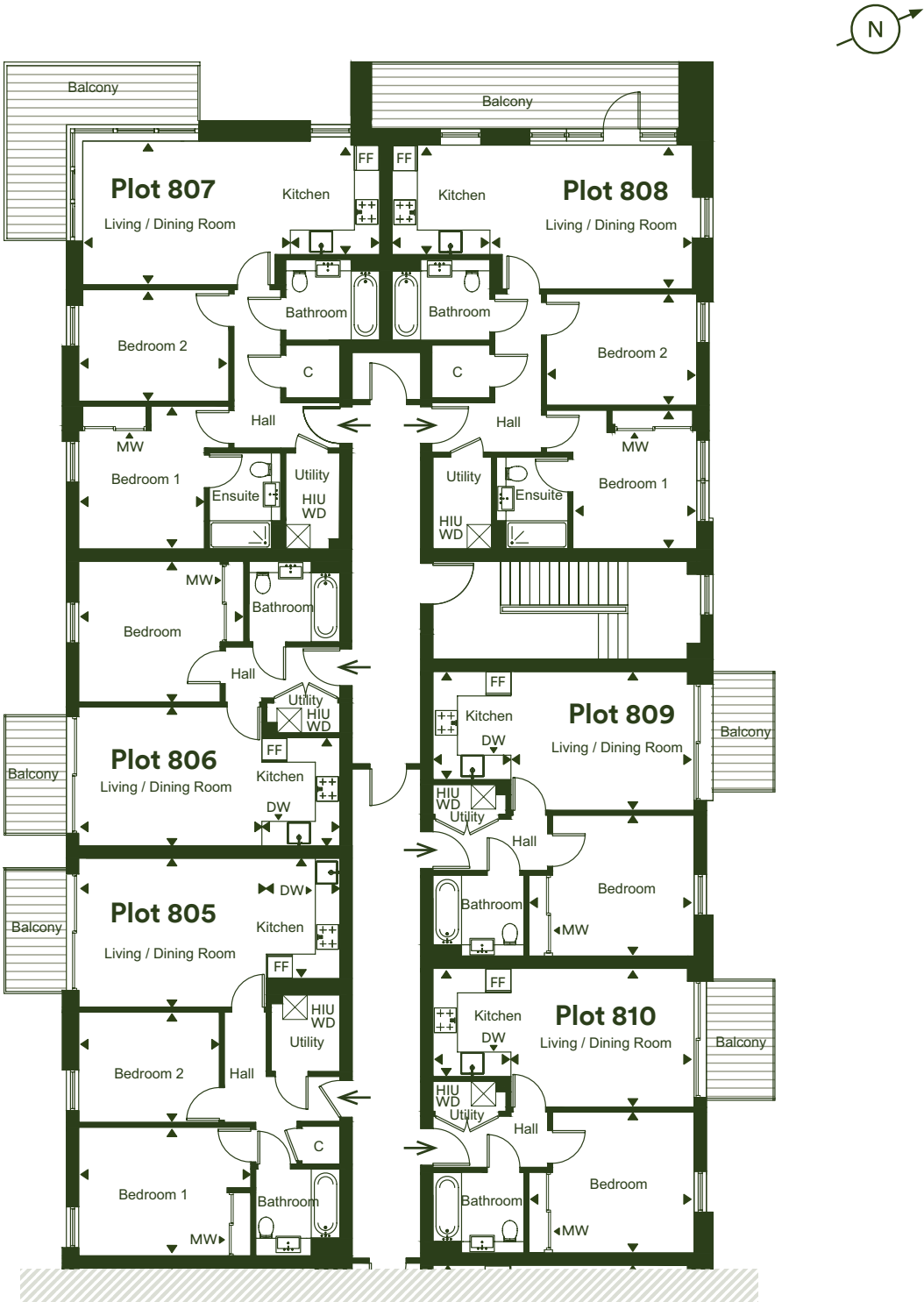
Plot 712 - 1 Bedroom Apartment

Living/Dining Room	4.42m x 3.68m	14'6" x 12'1"
Kitchen	2.93m x 1.79m	9'7" x 5'10"
Bedroom	3.91m x 3.45m	12'10" x 11'4"
Total Internal Area	45m ²	484ft ²
Balcony	4.3m ²	46.3ft ²

The floor plans provided are intended to only give a general indication of the proposed floor layout, are not drawn to scale and are not intended to form part of any offer, contract, warranty or representation. Measurements are given to the widest point, are approximate and are given as a guide only. They must not be relied upon as a statement or representation of fact. Do not use these measurements for carpet sizes, appliance spaces or items of furniture. Kitchen, bathroom and utility layouts may differ to build, and specific plot sizes and layouts may vary within the same unit type. Built-in wardrobe to include mirrored sliding doors, shelf and chrome hanging rail. For further clarification regarding specific individual plots, please ask our Sales Associates.

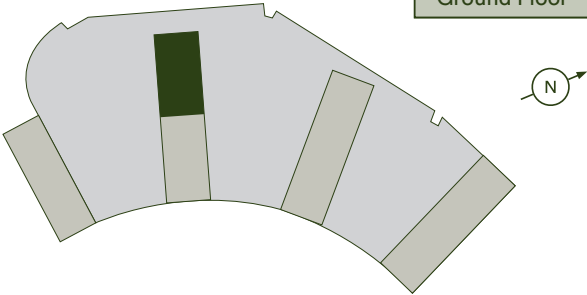
Eighth Floor

Plots 805, 806, 807, 808, 809 & 810



FF - Fridge/Freezer | MW - Mirrored Wardrobe | DW - Dishwasher
HIU - Heat Interface Unit | WD - Washer Dryer | C - Cupboard

Tenth Floor
Ninth Floor
Eighth Floor
Seventh Floor
Sixth Floor
Fifth Floor
Fourth Floor
Third Floor
Second Floor
First Floor
Ground Floor



Plot 805 - 2 Bedroom Apartment

Living/Dining Room	4.41m x 3.65m	14'6" x 12'0"
Kitchen	2.95m x 1.80m	9'8" x 5'11"
Bedroom 1	4.03m x 3.15m	13'3" x 10'4"
Bedroom 2	3.26m x 2.70m	10'8" x 8'10"
Total Internal Area	60.6m²	652ft²
Balcony	4.3m²	46.3ft²

Plot 806 - 1 Bedroom Apartment

Living/Dining Room	4.26m x 3.40m	14'0" x 11'2"
Kitchen	2.65m x 1.95m	8'8" x 6'5"
Bedroom	3.91m x 3.34m	12'10" x 11'4"
Total Internal Area	43.4m²	467ft²
Balcony	4.3m²	46.3ft²

Plot 807 - 2 Bedroom Apartment

Living/Dining Room	4.71m x 3.52m	15'6" x 11'6"
Kitchen	2.73m x 2.49m	8'11" x 8'2"
Bedroom 1	3.40m x 3.08m	11'2" x 10'1"
Bedroom 2	3.68m x 2.73m	12'1" x 8'11"
Total Internal Area	66.5m²	716ft²
Balcony	11.2m²	120ft²

Plot 808 - 2 Bedroom Apartment

Living/Dining Room	4.71m x 3.52m	15'6" x 11'6"
Kitchen	2.73m x 2.49m	8'11" x 8'2"
Bedroom 1	3.40m x 3.08m	11'2" x 10'1"
Bedroom 2	3.68m x 2.73m	12'1" x 8'11"
Total Internal Area	66.5m²	716ft²
Balcony	11.2m²	120ft²

Plot 809 - 1 Bedroom Apartment

Living/Dining Room	4.26m x 3.40m	14'0" x 11'2"
Kitchen	2.65m x 1.95m	8'8" x 6'5"
Bedroom	3.91m x 3.34m	12'10" x 11'4"
Total Internal Area	43.4m²	467ft²
Balcony	4.3m²	46.3ft²

Plot 810 - 1 Bedroom Apartment

Living/Dining Room	4.26m x 3.40m	14'0" x 11'2"
Kitchen	2.65m x 1.95m	8'8" x 6'5"
Bedroom	3.91m x 3.34m	12'10" x 11'4"
Total Internal Area	43.4m²	467ft²
Balcony	4.3m²	46.3ft²

The floor plans provided are intended to only give a general indication of the proposed floor layout, are not drawn to scale and are not intended to form part of any offer, contract, warranty or representation. Measurements are given to the widest point, are approximate and are given as a guide only. They must not be relied upon as a statement or representation of fact. Do not use these measurements for carpet sizes, appliance spaces or items of furniture. Kitchen, bathroom and utility layouts may differ to build, and specific plot sizes and layouts may vary within the same unit type. Built-in wardrobe to include mirrored sliding doors, shelf and chrome hanging rail. For further clarification regarding specific individual plots, please ask our Sales Associates.

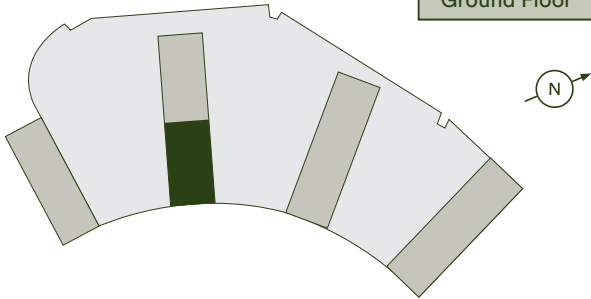
Eighth Floor

Plots 801, 802, 803, 804, 811 & 812



FF - Fridge/Freezer | MW - Mirrored Wardrobe | DW - Dishwasher
HIU - Heat Interface Unit | WD - Washer Dryer | C - Cupboard

Tenth Floor
Ninth Floor
Eighth Floor
Seventh Floor
Sixth Floor
Fifth Floor
Fourth Floor
Third Floor
Second Floor
First Floor
Ground Floor



Plot 801 - 2 Bedroom Apartment

Living/Dining Room	4.90m x 4.05m	16'1" x 13'3"
Kitchen	3.20m x 2.30m	10'6" x 7'7"
Bedroom 1	3.40m x 3.10m	11'2" x 10'1"
Bedroom 2	3.85m x 2.70m	12'8" x 8'10"
Total Internal Area	70.2m²	755ft²
Balcony	11.2m ²	120ft ²

Plot 802 - 2 Bedroom Apartment

Living/Dining Room	5.23m x 4.02m	17'2" x 13'2"
Kitchen	3.18m x 1.97m	10'5" x 6'6"
Bedroom 1	3.40m x 3.08m	11'2" x 10'1"
Bedroom 2	3.87m x 2.70m	12'8" x 8'10"
Total Internal Area	70.2m²	755ft²
Balcony	11.2m ²	120ft ²

Plot 803 - 2 Bedroom Apartment

Living/Dining Room	4.24m x 3.64m	13'11" x 11'11"
Kitchen	3.28m x 2.57m	10'9" x 8'5"
Bedroom 1	4.43m x 2.80m	14'6" x 9'2"
Bedroom 2	3.34m x 2.96m	10'11" x 9'9"
Total Internal Area	66m²	710ft²
Balcony	4.3m ²	46.3ft ²

Plot 804 - 2 Bedroom Apartment

Living/Dining Room	4.85m x 4.22m	15'11" x 13'10"
Kitchen	3.70m x 1.99m	12'2" x 6'6"
Bedroom 1	4.03m x 3.15m	13'3" x 10'4"
Bedroom 2	3.91m x 2.38m	12'10" x 7'10"
Total Internal Area	66m²	710ft²
Balcony	4.4m ²	46.3ft ²

Plot 811 - 1 Bedroom Apartment

Living/Dining Room	4.26m x 3.40m	14'0" x 11'2"
Kitchen	2.65m x 1.95m	8'8" x 6'5"
Bedroom	3.91m x 3.34m	12'10" x 11'4"
Total Internal Area	43.4m²	467ft²
Balcony	4.3m ²	46.3ft ²

Plot 812 - 1 Bedroom Apartment

Living/Dining Room	4.42m x 3.68m	14'6" x 12'1"
Kitchen	2.93m x 1.79m	9'7" x 5'10"
Bedroom	3.91m x 3.45m	12'10" x 11'4"
Total Internal Area	45m²	484ft²
Balcony	4.3m ²	46.3ft ²

The floor plans provided are intended to only give a general indication of the proposed floor layout, are not drawn to scale and are not intended to form part of any offer, contract, warranty or representation. Measurements are given to the widest point, are approximate and are given as a guide only. They must not be relied upon as a statement or representation of fact. Do not use these measurements for carpet sizes, appliance spaces or items of furniture. Kitchen, bathroom and utility layouts may differ to build, and specific plot sizes and layouts may vary within the same unit type. Built-in wardrobe to include mirrored sliding doors, shelf and chrome hanging rail. For further clarification regarding specific individual plots, please ask our Sales Associates.

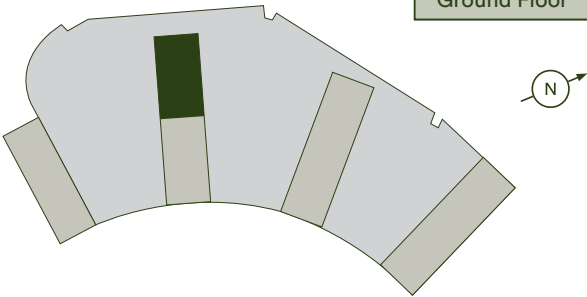
Ninth Floor

Plots 905, 906, 907, 908, 909 & 910



FF - Fridge/Freezer | MW - Mirrored Wardrobe | DW - Dishwasher
HIU - Heat Interface Unit | WD - Washer Dryer | C - Cupboard

Tenth Floor
Ninth Floor
Eighth Floor
Seventh Floor
Sixth Floor
Fifth Floor
Fourth Floor
Third Floor
Second Floor
First Floor
Ground Floor



Plot 905 - 2 Bedroom Apartment

Living/Dining Room	4.41m x 3.65m	14'6" x 12'0"
Kitchen	2.95m x 1.80m	9'8" x 5'11"
Bedroom 1	4.03m x 3.15m	13'3" x 10'4"
Bedroom 2	3.26m x 2.70m	10'8" x 8'10"
Total Internal Area	60.6m ²	652ft ²
Balcony	4.3m ²	46.3ft ²

Plot 906 - 1 Bedroom Apartment

Living/Dining Room	4.26m x 3.40m	14'0" x 11'2"
Kitchen	2.65m x 1.95m	8'8" x 6'5"
Bedroom	3.91m x 3.34m	12'10" x 11'4"
Total Internal Area	43.4m ²	467ft ²
Balcony	4.3m ²	46.3ft ²

Plot 907 - 2 Bedroom Apartment

Living/Dining Room	4.71m x 3.52m	15'6" x 11'6"
Kitchen	2.73m x 2.49m	8'11" x 8'2"
Bedroom 1	3.40m x 3.08m	11'2" x 10'1"
Bedroom 2	3.68m x 2.73m	12'1" x 8'11"
Total Internal Area	66.5m ²	716ft ²
Balcony	4.3m ²	120ft ²

Plot 908 - 2 Bedroom Apartment

Living/Dining Room	4.71m x 3.52m	15'6" x 11'6"
Kitchen	2.73m x 2.49m	8'11" x 8'2"
Bedroom 1	3.40m x 3.08m	11'2" x 10'1"
Bedroom 2	3.68m x 2.73m	12'1" x 8'11"
Total Internal Area	66.5m ²	716ft ²
Balcony	11.2m ²	120ft ²

Plot 909 - 1 Bedroom Apartment

Living/Dining Room	4.26m x 3.40m	14'0" x 11'2"
Kitchen	2.65m x 1.95m	8'8" x 6'5"
Bedroom	3.91m x 3.34m	12'10" x 11'4"
Total Internal Area	43.4m ²	467ft ²
Balcony	4.3m ²	46.3ft ²

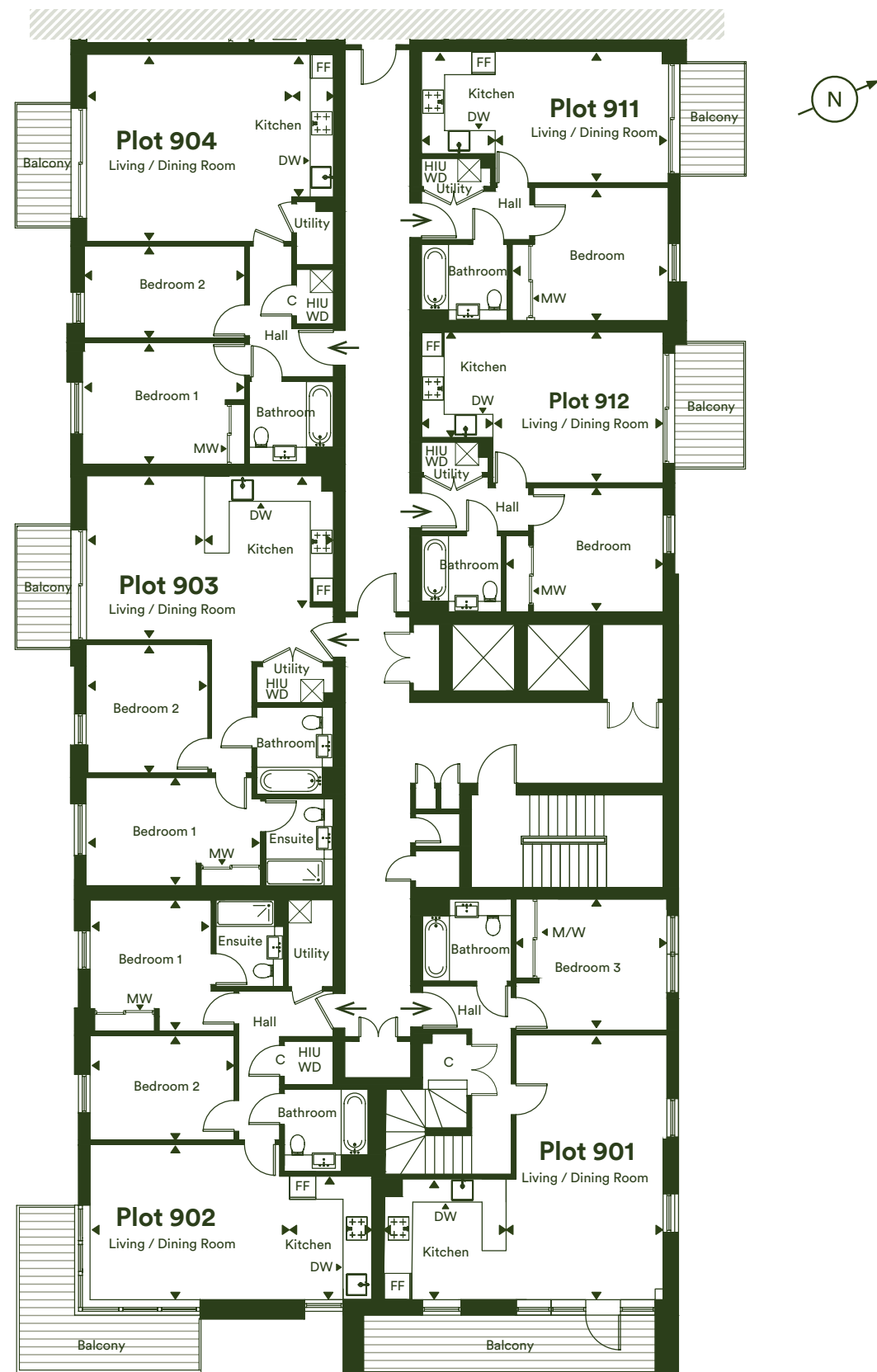
Plot 910 - 1 Bedroom Apartment

Living/Dining Room	4.26m x 3.40m	14'0" x 11'2"
Kitchen	2.65m x 1.95m	8'8" x 6'5"
Bedroom	3.91m x 3.34m	12'10" x 11'4"
Total Internal Area	43.4m ²	467ft ²
Balcony	4.3m ²	46.3ft ²

The floor plans provided are intended to only give a general indication of the proposed floor layout, are not drawn to scale and are not intended to form part of any offer, contract, warranty or representation. Measurements are given to the widest point, are approximate and are given as a guide only. They must not be relied upon as a statement or representation of fact. Do not use these measurements for carpet sizes, appliance spaces or items of furniture. Kitchen, bathroom and utility layouts may differ to build, and specific plot sizes and layouts may vary within the same unit type. Built-in wardrobe to include mirrored sliding doors, shelf and chrome hanging rail. For further clarification regarding specific individual plots, please ask our Sales Associates.

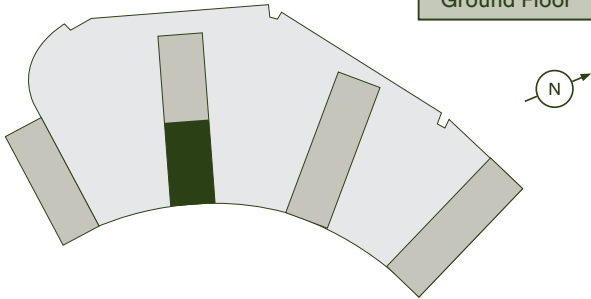
Ninth Floor

Plots 901*, 902, 903, 904, 911 & 912



FF - Fridge/Freezer | MW - Mirrored Wardrobe | DW - Dishwasher
HIU - Heat Interface Unit | WD - Washer Dryer | C - Cupboard

Tenth Floor
Ninth Floor
Eighth Floor
Seventh Floor
Sixth Floor
Fifth Floor
Fourth Floor
Third Floor
Second Floor
First Floor
Ground Floor



Plot 901 - 3 Bedroom Duplex Apartment Lower Floor

Living/Dining Room	6.84m x 3.80m	22'5" x 12'6"
Kitchen	3.40m x 2.93m	11'2" x 9'7"
Bedroom 3	3.91m x 3.40m	12'10" x 11'2"
Balcony	16m ²	172ft ²

Plot 902 - 2 Bedroom Apartment

Living/Dining Room	5.23m x 4.02m	17'2" x 13'2"
Kitchen	3.18m x 1.97m	10'5" x 6'6"
Bedroom 1	3.40m x 3.08m	11'2" x 10'1"
Bedroom 2	3.87m x 2.70m	12'8" x 8'10"
Total Internal Area	70.2m ²	755ft ²
Balcony	11.2m ²	120ft ²

Plot 903 - 2 Bedroom Apartment

Living/Dining Room	4.24m x 3.64m	13'11" x 11'11"
Kitchen	3.28m x 2.57m	10'9" x 8'5"
Bedroom 1	4.43m x 2.80m	14'6" x 9'2"
Bedroom 2	3.34m x 2.96m	10'11" x 9'9"
Total Internal Area	66m ²	710ft ²
Balcony	4.3m ²	46.3ft ²

Plot 904 - 2 Bedroom Apartment

Living/Dining Room	4.85m x 4.22m	15'11" x 13'10"
Kitchen	3.70m x 1.99m	12'2" x 6'6"
Bedroom 1	4.03m x 3.15m	13'3" x 10'4"
Bedroom 2	3.91m x 2.38m	12'10" x 7'10"
Total Internal Area	66m ²	710ft ²
Balcony	4.4m ²	46.3ft ²

Plot 911 - 1 Bedroom Apartment

Living/Dining Room	4.26m x 3.40m	14'0" x 11'2"
Kitchen	2.65m x 1.95m	8'8" x 6'5"
Bedroom	3.91m x 3.34m	12'10" x 11'4"
Total Internal Area	43.4m ²	467ft ²
Balcony	4.3m ²	46.3ft ²

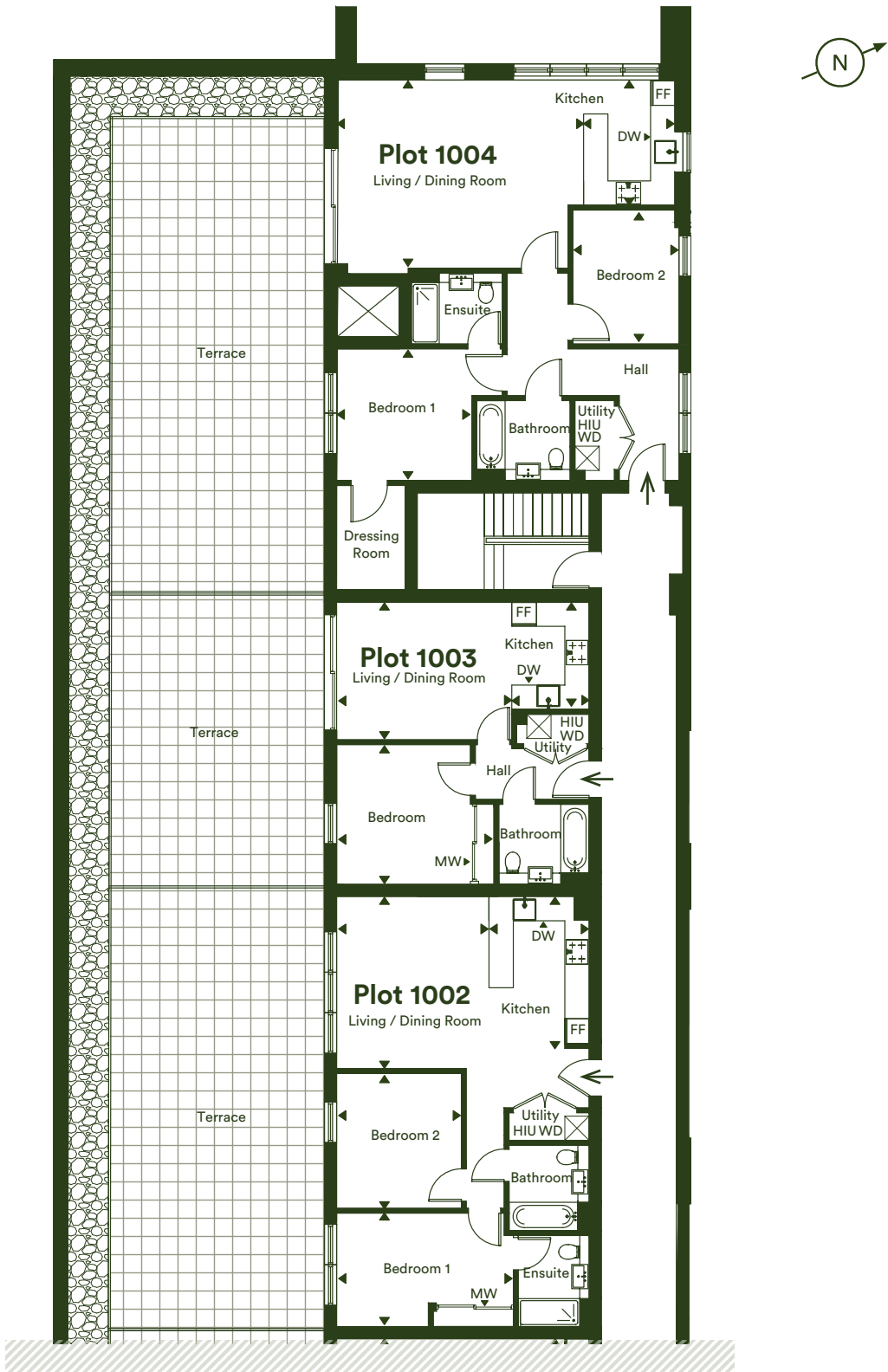
Plot 912 - 1 Bedroom Apartment

Living/Dining Room	4.42m x 3.68m	14'6" x 12'1"
Kitchen	2.93m x 1.79m	9'7" x 5'10"
Bedroom	3.91m x 3.45m	12'10" x 11'4"
Total Internal Area	45m ²	484ft ²
Balcony	4.3m ²	46.3ft ²

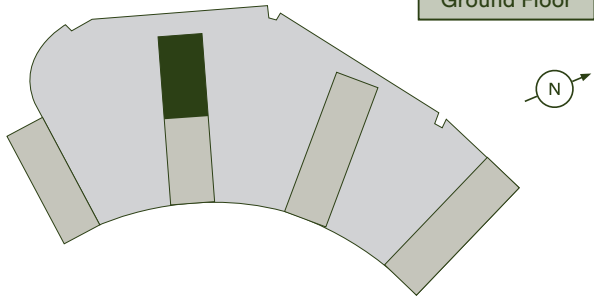
The floor plans provided are intended to only give a general indication of the proposed floor layout, are not drawn to scale and are not intended to form part of any offer, contract, warranty or representation. Measurements are given to the widest point, are approximate and are given as a guide only. They must not be relied upon as a statement or representation of fact. Do not use these measurements for carpet sizes, appliance spaces or items of furniture. Kitchen, bathroom and utility layouts may differ to build, and specific plot sizes and layouts may vary within the same unit type. Built-in wardrobe to include mirrored sliding doors, shelf and chrome hanging rail. For further clarification regarding specific individual plots, please ask our Sales Associates.

Tenth Floor

Plots 1002, 1003 & 1004



FF - Fridge/Freezer | MW - Mirrored Wardrobe | DW - Dishwasher
HIU - Heat Interface Unit | WD - Washer Dryer | C - Cupboard



Tenth Floor
Ninth Floor
Eighth Floor
Seventh Floor
Sixth Floor
Fifth Floor
Fourth Floor
Third Floor
Second Floor
First Floor
Ground Floor

Plot 1002 - 2 Bedroom Apartment

Living/Dining Room	4.25m x 3.76m	13'11" x 12'4"
Kitchen	3.63m x 2.57m	11'11" x 8'5"
Bedroom 1	4.43m x 2.80m	14'6" x 9'2"
Bedroom 2	3.33m x 3.08m	10'11" x 10'1"
Total Internal Area	66.9m ²	720ft ²
Terrace	52m ²	559ft ²

Plot 1003 - 1 Bedroom Apartment

Living/Dining Room	4.26m x 3.40m	14'0" x 11'2"
Kitchen	2.65m x 1.95m	8'8" x 6'5"
Bedroom 1	3.91m x 3.34m	12'10" x 11'4"
Total Internal Area	43.4m ²	467ft ²
Terrace	34.9m ²	375ft ²

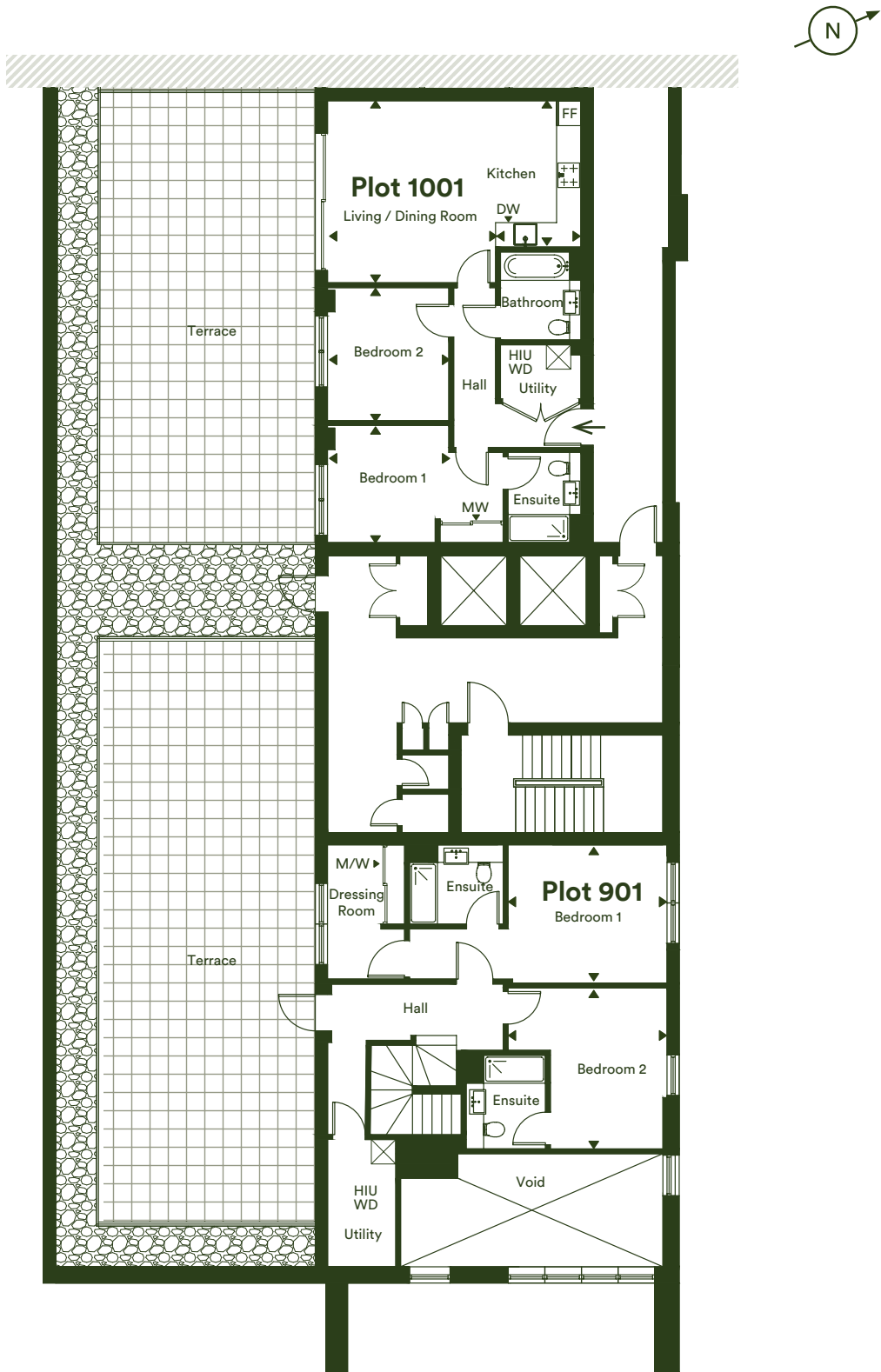
Plot 1004 - 2 Bedroom Apartment

Living/Dining Room	5.78m x 4.80m	18'11" x 15'9"
Kitchen	3.09m x 2.52m	10'1" x 8'3"
Bedroom 1	3.78m x 3.34m	12'5" x 10'11"
Bedroom 2	3.26m x 2.88m	10'8" x 9'5"
Total Internal Area	83.4m ²	898ft ²
Terrace	55.3m ²	595ft ²

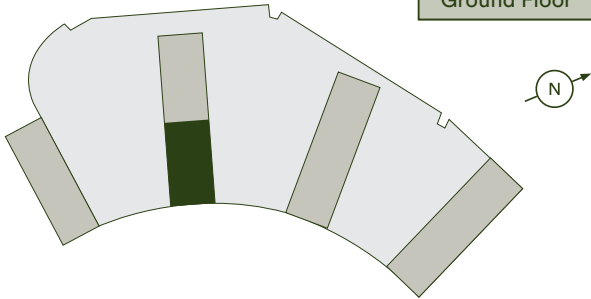
The floor plans provided are intended to only give a general indication of the proposed floor layout, are not drawn to scale and are not intended to form part of any offer, contract, warranty or representation. Measurements are given to the widest point, are approximate and are given as a guide only. They must not be relied upon as a statement or representation of fact. Do not use these measurements for carpet sizes, appliance spaces or items of furniture. Kitchen, bathroom and utility layouts may differ to build, and specific plot sizes and layouts may vary within the same unit type. Built-in wardrobe to include mirrored sliding doors, shelf and chrome hanging rail. For further clarification regarding specific individual plots, please ask our Sales Associates.

Tenth Floor

Plots 901* & 1001



FF - Fridge/Freezer | MW - Mirrored Wardrobe | DW - Dishwasher
HIU - Heat Interface Unit | WD - Washer Dryer | C - Cupboard



Tenth Floor
Ninth Floor
Eighth Floor
Seventh Floor
Sixth Floor
Fifth Floor
Fourth Floor
Third Floor
Second Floor
First Floor
Ground Floor

Plot 901 - 3 Bedroom Duplex Apartment Upper Floor

Dressing room	3.18m x 2.07m	10'5" x 6'9"
Utility	3.20m x 1.73m	10'6" x 5'8"
Bedroom 1	6.13m x 3.35m	20'1" x 11'0"
Bedroom 2	3.86m x 3.83m	12'8" x 12'7"
Terrace	66.9m ²	720ft ²

Plot 1001 - 2 Bedroom Apartment

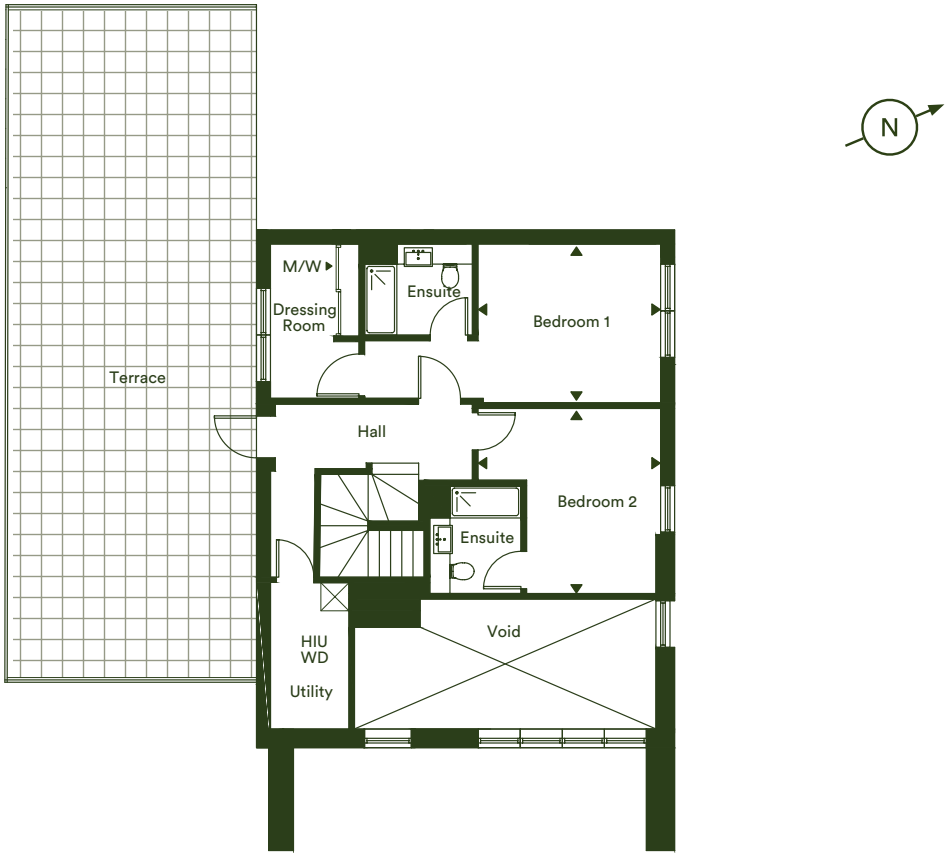
Living/Dining Room	4.48m x 4.23m	14'8" x 13'10"
Kitchen	3.60m x 2.10m	11'10" x 6'11"
Bedroom 1	4.43m x 2.90m	14'6" x 9'6"
Bedroom 2	3.27m x 3.08m	10'9" x 10'1"
Total Internal Area	68.7m ²	739ft ²
Terrace	55.3m ²	595ft ²

The floor plans provided are intended to only give a general indication of the proposed floor layout, are not drawn to scale and are not intended to form part of any offer, contract, warranty or representation. Measurements are given to the widest point, are approximate and are given as a guide only. They must not be relied upon as a statement or representation of fact. Do not use these measurements for carpet sizes, appliance spaces or items of furniture. Kitchen, bathroom and utility layouts may differ to build, and specific plot sizes and layouts may vary within the same unit type. Built-in wardrobe to include mirrored sliding doors, shelf and chrome hanging rail. For further clarification regarding specific individual plots, please ask our Sales Associates.

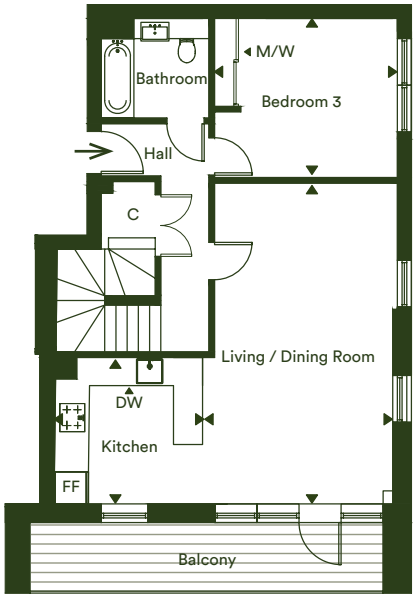
3 Bedroom Duplex Apartment

Plot 901

Upper Floor

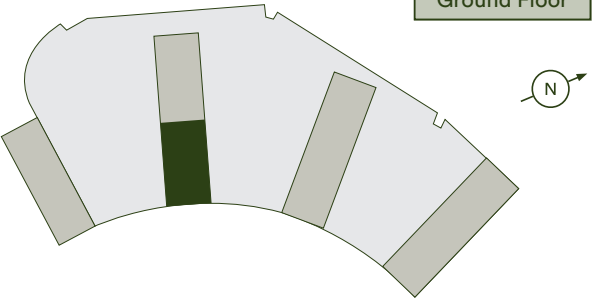


Lower Floor



FF - Fridge/Freezer | MW - Mirrored Wardrobe | DW - Dishwasher
HIU - Heat Interface Unit | WD - Washer Dryer | C - Cupboard

Tenth Floor
Ninth Floor
Eighth Floor
Seventh Floor
Sixth Floor
Fifth Floor
Fourth Floor
Third Floor
Second Floor
First Floor
Ground Floor



Plot 901 - 3 Bedroom Duplex Apartment

Living/Dining Room	6.84m x 3.80m	22' 5" x 12'6"
Kitchen	3.40m x 2.93m	11'2" x 9'7"
Bedroom 1	6.13m x 3.35m	20'4" x 11'0"
Bedroom 2	3.86m x 3.83m	12'8" x 12'7"
Bedroom 3	3.91m x 3.40m	12'10" x 11'2"
Dressing room	3.18m x 2.07m	10'5" x 6'9"
Utility	3.20m x 1.73m	10'6" x 5'8"
Total Internal Area	136.4m²	1468ft²
Balcony	16m²	172ft²
Terrace	66.9m²	720ft²

The floor plans provided are intended to only give a general indication of the proposed floor layout, are not drawn to scale and are not intended to form part of any offer, contract, warranty or representation. Measurements are given to the widest point, are approximate and are given as a guide only. They must not be relied upon as a statement or representation of fact. Do not use these measurements for carpet sizes, appliance spaces or items of furniture. Kitchen, bathroom and utility layouts may differ to build, and specific plot sizes and layouts may vary within the same unit type. Built-in wardrobe to include mirrored sliding doors, shelf and chrome hanging rail.For further clarification regarding specific individual plots, please ask our Sales Associates.



**BANKSIDE
GARDENS**
Green Park

We're here and ready to help

When you're ready to move in, L&Q will give you a personal introduction to your new L&Q home.

The L&Q new homes warranty
We will demonstrate how to operate your appliances and heating and talk you through any special features, all of which will be detailed in your Home User Guide.

This lasts for two years from the date of legal completion. For the 2-year period, we guarantee items supplied as part of your new home, covering repairs needed due to faulty workmanship or materials. The NHBC Buildmark cover is valid for 12 years from the date the building was finished.

Your sales associate can provide you with more details on the L&Q warranty and NHBC Buildmark cover. You can also access the full terms and conditions on our website: lqgroup.org.uk

We are confident that you will be delighted with your new L&Q home, but for added peace of mind, all of our homes also come with an L&Q new homes warranty.

L&Q achievements



A selection of other L&Q developments



L&Q at Huntley Wharf, Reading
lqhomes.com/huntleywharf



The Arbour, Chelmsford
lqhomes.com/beaulieuarbour



L&Q at Marleigh, Cambridge
lqhomes.com/marleigh

L&Q at Bankside Gardens

Flagstaff Road
Reading
RG2 6BW

@ banksidegardens@lqgroup.org.uk
☎ 0333 242 2045
🌐 lqhomes.com/banksidegardens

Disclaimer
All information in this document is correct at the time of publication going to print July 2023. The contents of this brochure should not be considered material information for the purposes of purchasing a home. No image or photograph (whether computer generated or otherwise) is taken as a statement or representation of fact, and no image or photograph (whether computer generated or otherwise) forms part of any offer, contract, warranty or representation.

Registered office: L&Q, 29-35 West Ham Lane, Stratford, London E15 4PH. Homes & Communities Agency L4517. Registered Society 30441R Exempt charity. Details correct at the time of going to print July 2023. Your home is at risk if you fail to keep up repayments on a mortgage, rent or other loan secured on it. Please make sure you can afford the repayments before you take out a mortgage.