

L&Q at
**BANKSIDE
GARDENS**

Siteplan & Floorplan Brochure
Block Five



CGI is indicative of L&Q at Bankside Gardens.

L&Q









L&Q

Siteplan

READING
GREEN PARK
TRAIN STATION

TO LONDON
VIA READING

Property Key

	Shared Ownership		Train station
	Shared Ownership and Affordable Rental Homes		Landscaped gardens
	Residents Club 51 at Bankside Gardens offering cinema, co-working space, concierge and gym		Tesco Express
	Market Sale		Car park

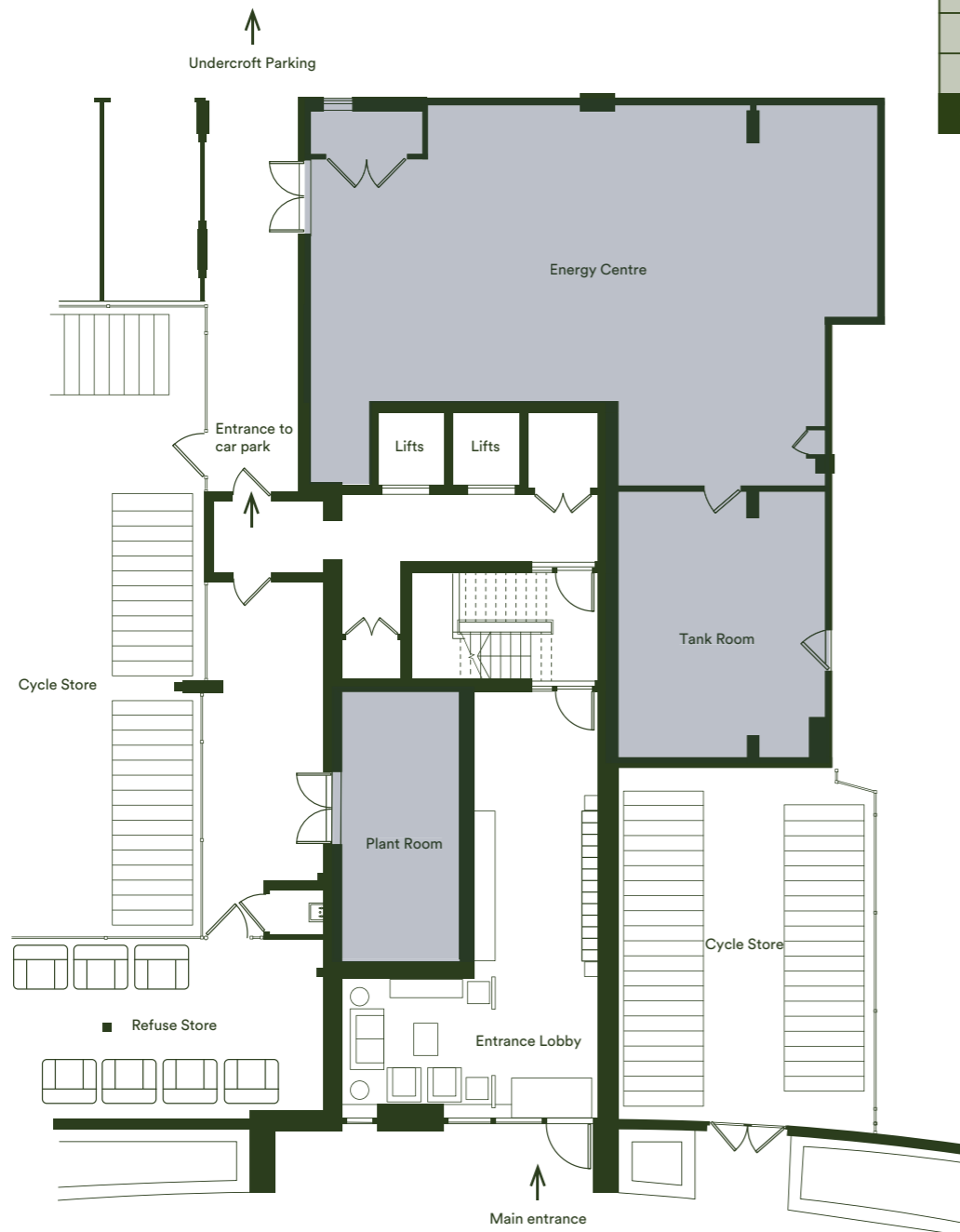


Disclaimer: Please note that the properties are currently under construction. For further clarification regarding specific individual plots, please ask our Sales Associates. Any depiction of the layout does not show details of gradients of land, boundary treatments, local authority street lighting or landscaping. It is our intention to build in accordance with this layout including the locations of Market Sale, Shared Ownership, London Living Rent, Private Rent and Affordable Rent properties (known as tenures). However, there may be occasions when the tenure location, house designs, boundaries, landscaping and positions of roads and footpaths, play areas and other facilities or amenities may change as the development proceeds and as properties are marketed. The layout (including tenure locations) is subject to amendments due to changing planning permission for the development, and depictions of the layout should be used as guidance only. No site map including tenure locations (whether computer generated or otherwise) forms part of any offer, contract, warranty, or representation and are for illustrative and guidance purposes only, quality of this technology may vary. In relation to computer generated images, minimum dimensions have been used to generate this image and as a result dimensions may vary (and should not be relied on by you).

Ground Floor



Tenth Floor
Ninth Floor
Eighth Floor
Seventh Floor
Sixth Floor
Fifth Floor
Fourth Floor
Third Floor
Second Floor
First Floor
Ground Floor



Key

 No public access

The floor plans provided are intended to only give a general indication of the proposed floor layout, are not drawn to scale and are not intended to form part of any offer, contract, warranty or representation. Measurements are given to the widest point, are approximate and are given as a guide only. They must not be relied upon as a statement or representation of fact. Do not use these measurements for carpet sizes, appliance spaces or items of furniture. Kitchen, bathroom and utility layouts may differ to build, and specific plot sizes and layouts may vary within the same unit type. Built-in wardrobe to include mirrored sliding doors, shelf and chrome hanging rail. For further clarification regarding specific individual plots, please ask our Sales Associates.

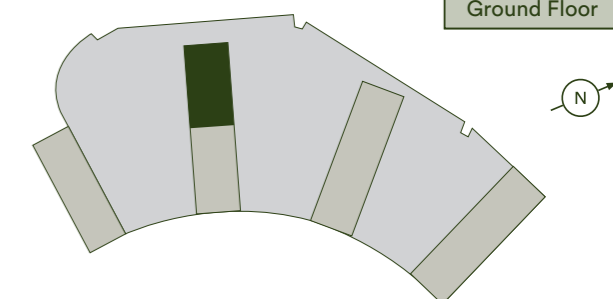
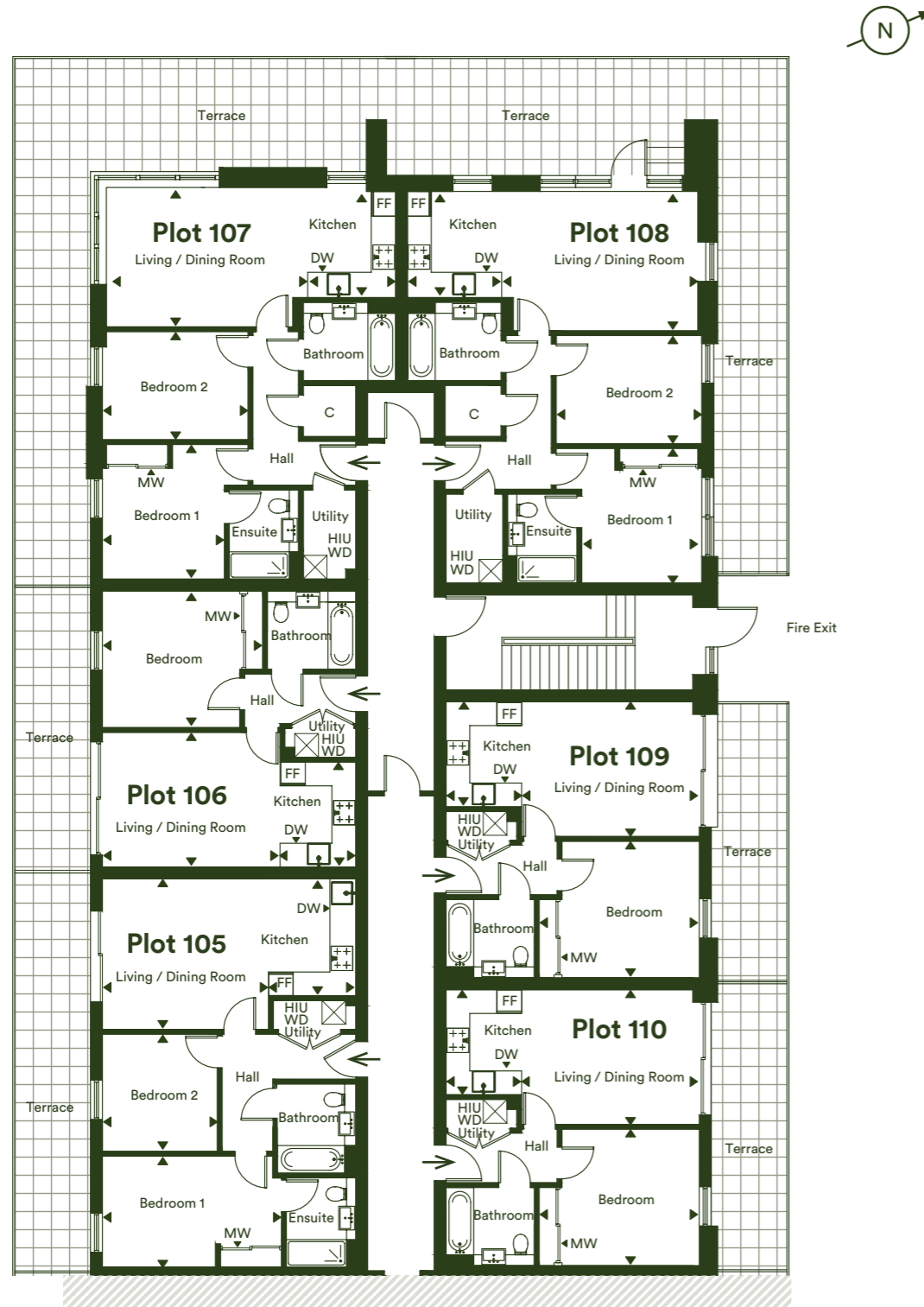
We provide the home
and you make it your own



First Floor

Plots 105, 106, 107, 108, 109 & 110

Tenth Floor
Ninth Floor
Eighth Floor
Seventh Floor
Sixth Floor
Fifth Floor
Fourth Floor
Third Floor
Second Floor
First Floor
Ground Floor



Plot 105 - 2 Bedroom Apartment

Living/Dining Room	4.11m x 3.80m	13'6" x 12'6"
Kitchen	2.10m x 2.95m	6'11" x 9'8"
Bedroom 1	4.43m x 2.80m	14'6" x 9'2"
Bedroom 2	2.96m x 2.90m	9'8" x 9'6"
Total Internal Area	60.6m²	652ft²
Terrace	16.5m ²	178ft ²

Plot 108 - 2 Bedroom Apartment

Living/Dining Room	4.78m x 3.52m	15'8" x 11'6"
Kitchen	2.12m x 2.68m	6'11" x 8'10"
Bedroom 1	3.08m x 3.40m	10'1" x 11'2"
Bedroom 2	3.68m x 2.73m	12'1" x 8'11"
Total Internal Area	66.6m²	717ft²
Terrace	54.3m ²	584ft ²

Plot 106 - 1 Bedroom Apartment

Living/Dining Room	4.26m x 3.40m	14'0" x 11'2"
Kitchen	1.95m x 2.65m	6'5" x 8'8"
Bedroom	3.91m x 3.45m	12'10" x 11'4"
Total Internal Area	43.4m²	467ft²
Terrace	11.6m ²	124ft ²

Plot 109 - 1 Bedroom Apartment

Living/Dining Room	4.26m x 3.40m	14'0" x 11'2"
Kitchen	1.95m x 2.65m	6'5" x 8'8"
Bedroom	3.91m x 3.45m	12'10" x 11'4"
Total Internal Area	43.4m²	467ft²
Terrace	11.6m ²	124ft ²

Plot 107 - 2 Bedroom Apartment

Living/Dining Room	4.71m x 3.52m	15'6" x 11'6"
Kitchen	2.49m x 2.73m	8'2" x 8'11"
Bedroom 1	3.08m x 3.40m	10'1" x 11'2"
Bedroom 2	3.68m x 2.73m	12'1" x 8'11"
Total Internal Area	66.5m²	716ft²
Terrace	47.9m ²	515ft ²

Plot 110 - 1 Bedroom Apartment

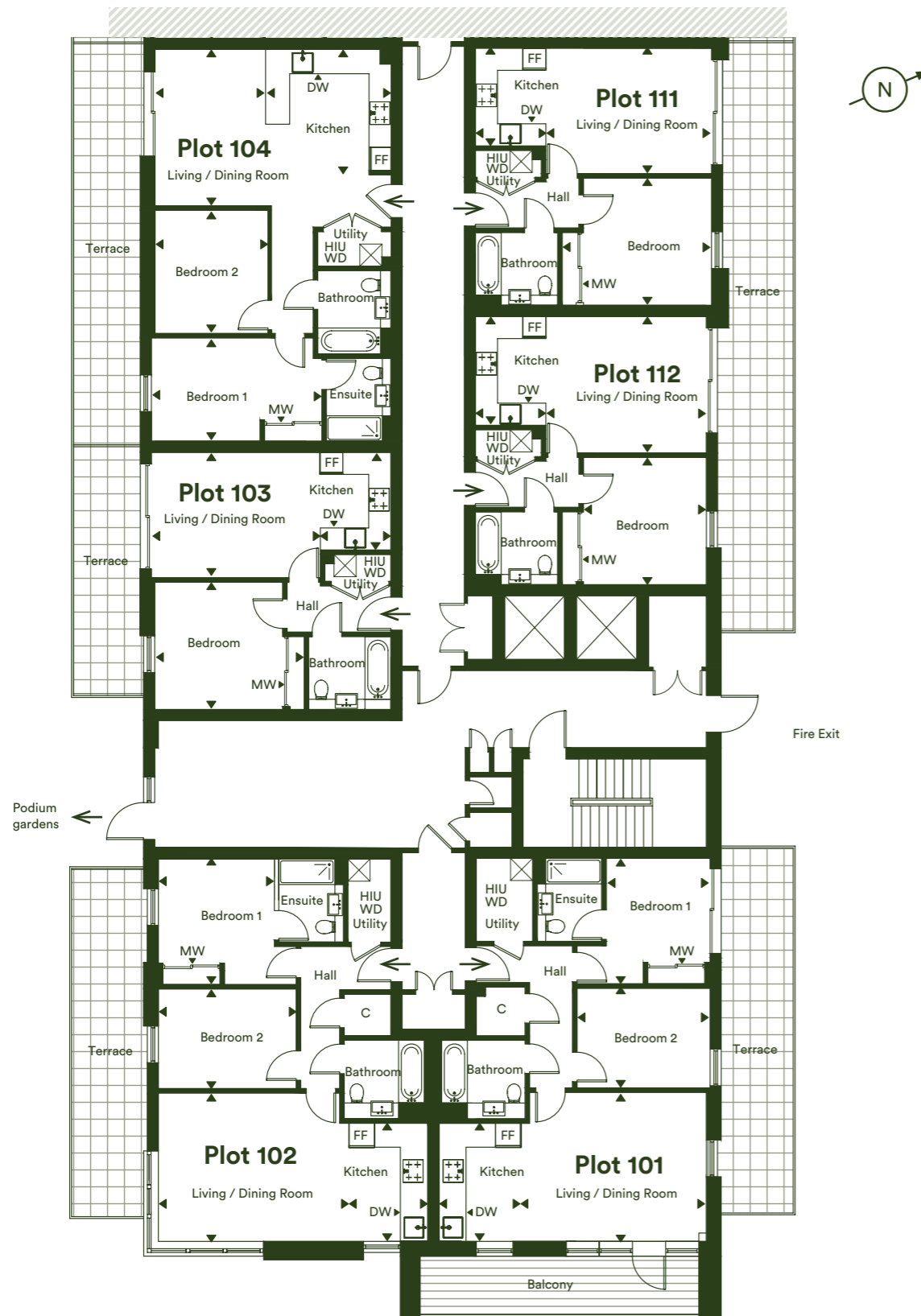
Living/Dining Room	4.26m x 3.40m	14'0" x 11'2"
Kitchen	1.95m x 2.65m	6'5" x 8'8"
Bedroom	3.91m x 3.45m	12'10" x 11'4"
Total Internal Area	43.4m²	467ft²
Terrace	11.6m ²	124ft ²

FF - Fridge/Freezer | MW - Mirrored Wardrobe | DW - Dishwasher
 HIU - Heat Interface Unit | WD - Washer Dryer | C - Cupboard

The floor plans provided are intended to only give a general indication of the proposed floor layout, are not drawn to scale and are not intended to form part of any offer, contract, warranty or representation. Measurements are given to the widest point, are approximate and are given as a guide only. They must not be relied upon as a statement or representation of fact. Do not use these measurements for carpet sizes, appliance spaces or items of furniture. Kitchen, bathroom and utility layouts may differ to build, and specific plot sizes and layouts may vary within the same unit type. Built-in wardrobe to include mirrored sliding doors, shelf and chrome hanging rail. For further clarification regarding specific individual plots, please ask our Sales Associates.

First Floor

Plots 101, 102, 103, 104, 111 & 112

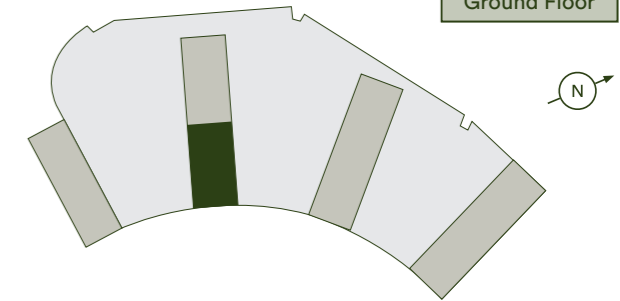


Podium gardens

Fire Exit

FF - Fridge/Freezer | MW - Mirrored Wardrobe | DW - Dishwasher
 HIU - Heat Interface Unit | WD - Washer Dryer | C - Cupboard

Tenth Floor
Ninth Floor
Eighth Floor
Seventh Floor
Sixth Floor
Fifth Floor
Fourth Floor
Third Floor
Second Floor
First Floor
Ground Floor



Plot 101 - 2 Bedroom Apartment

Living/Dining Room	4.90m x 4.05m	16'1" x 13'3"
Kitchen	2.30m x 3.20m	7'7" x 10'6"
Bedroom 1	3.19m x 3.40m	10'1" x 11'2"
Bedroom 2	3.85m x 2.70m	12'8" x 8'10"
Total Internal Area	70.2m²	755ft²
Terrace	19m ²	240ft ²
Balcony	11.1m ²	119ft ²

Plot 102 - 2 Bedroom Apartment

Living/Dining Room	5.23m x 4.02m	17'2" x 13'2"
Kitchen	1.97m x 3.18m	6'6" x 10'5"
Bedroom 1	3.08m x 3.40m	10'1" x 11'2"
Bedroom 2	3.87m x 2.70m	12'8" x 8'10"
Total Internal Area	70.2m²	755ft²
Terrace	18.3m ²	196ft ²

Plot 103 - 1 Bedroom Apartment

Living/Dining Room	4.26m x 3.40m	14'0" x 11'2"
Kitchen	1.95m x 2.65m	6'5" x 8'8"
Bedroom	3.91m x 3.45m	12'10" x 11'4"
Total Internal Area	43.4m²	467ft²
Terrace	11.6m ²	124ft ²

Plot 104 - 2 Bedroom Apartment

Living/Dining Room	3.64m x 4.24m	11'11" x 13'11"
Kitchen	2.57m x 3.28m	8' 5" x 10'9"
Bedroom 1	4.43m x 2.80m	14'6" x 9'2"
Bedroom 2	2.96m x 3.34m	9'9" x 10'11"
Total Internal Area	66m²	710ft²
Terrace	18m ²	193ft ²

Plot 111 - 1 Bedroom Apartment

Living/Dining Room	4.26m x 3.40m	14'0" x 11'2"
Kitchen	1.95m x 2.65m	6'5" x 8'8"
Bedroom	3.91m x 3.45m	12'10" x 11'4"
Total Internal Area	43.4m²	467ft²
Terrace	11.6m ²	124ft ²

Plot 112 - 1 Bedroom Apartment

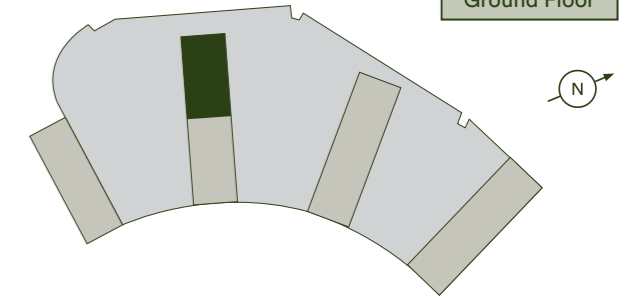
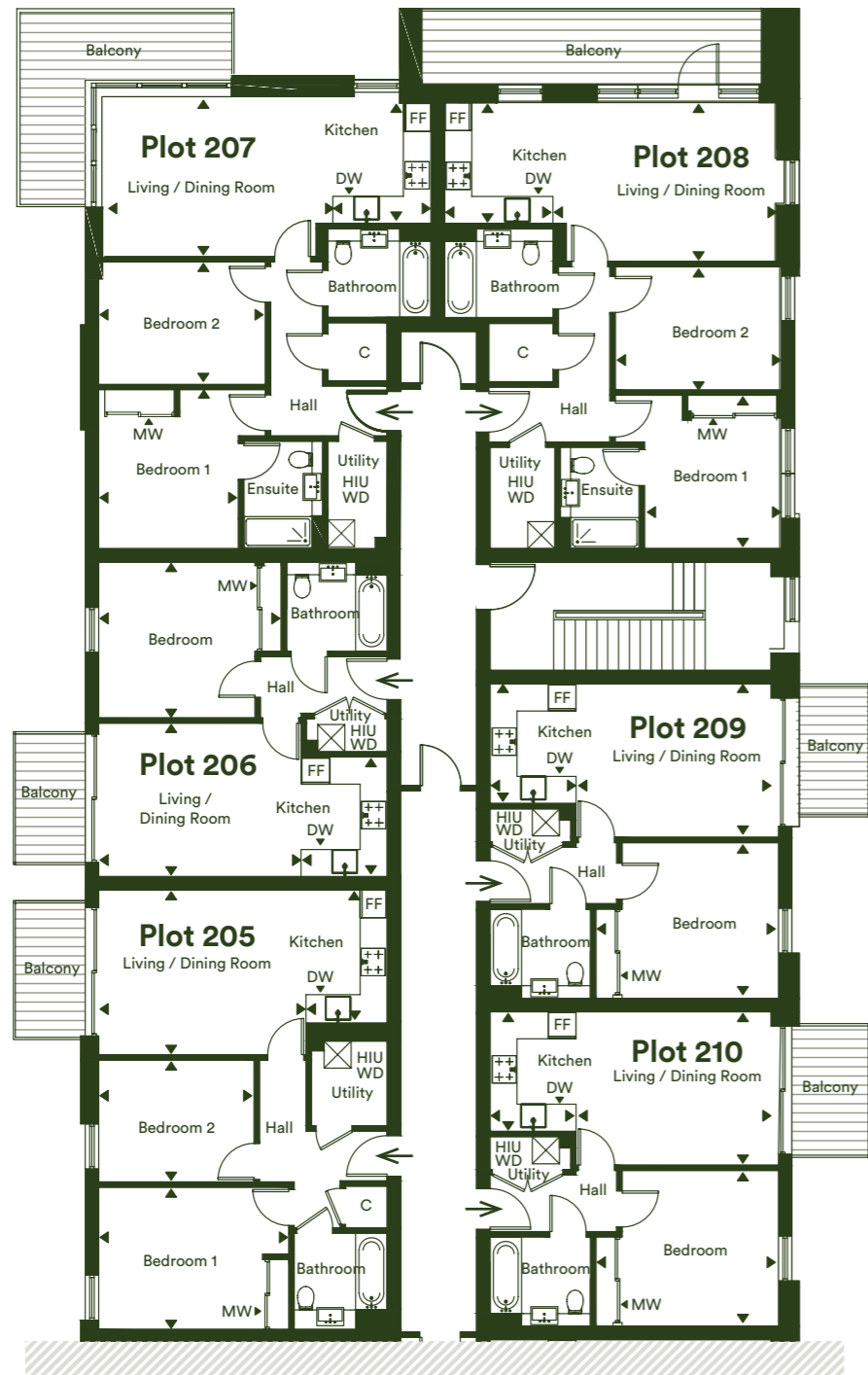
Living/Dining Room	4.42m x 3.68m	14'6" x 12'1"
Kitchen	1.79m x 2.93m	5'10" x 9'7"
Bedroom	3.91m x 3.45m	12'10" x 11'4"
Total Internal Area	45m²	484ft²
Terrace	14.9m ²	182ft ²

The floor plans provided are intended to only give a general indication of the proposed floor layout, are not drawn to scale and are not intended to form part of any offer, contract, warranty or representation. Measurements are given to the widest point, are approximate and are given as a guide only. They must not be relied upon as a statement or representation of fact. Do not use these measurements for carpet sizes, appliance spaces or items of furniture. Kitchen, bathroom and utility layouts may differ to build, and specific plot sizes and layouts may vary within the same unit type. Built-in wardrobe to include mirrored sliding doors, shelf and chrome hanging rail. For further clarification regarding specific individual plots, please ask our Sales Associates.

Second Floor

Plots 205, 206, 207, 208, 209 & 210

Tenth Floor
Ninth Floor
Eighth Floor
Seventh Floor
Sixth Floor
Fifth Floor
Fourth Floor
Third Floor
Second Floor
First Floor
Ground Floor



Plot 205 - 2 Bedroom Apartment

Living/Dining Room	4.41m x 3.65m	14'6" x 12'0"
Kitchen	2.95m x 1.80m	9'8" x 5'11"
Bedroom 1	4.03m x 3.15m	13'3" x 10'4"
Bedroom 2	3.26m x 2.70m	10'8" x 8'10"
Total Internal Area	60.6m²	652ft²
Balcony	4.3m ²	46.3ft ²

Plot 206 - 1 Bedroom Apartment

Living/Dining Room	4.26m x 3.40m	14'0" x 11'2"
Kitchen	2.65m x 1.95m	8'8" x 6'5"
Bedroom	3.91m x 3.45m	12'10" x 11'4"
Total Internal Area	43.4m²	467ft²
Balcony	4.3m ²	46.3ft ²

Plot 207 - 2 Bedroom Apartment

Living/Dining Room	4.71m x 3.52m	15'6" x 11'6"
Kitchen	2.73m x 2.49m	8'11" x 8'2"
Bedroom 1	3.40m x 3.08m	11'2" x 10'1"
Bedroom 2	3.68m x 2.73m	12'1" x 8'11"
Total Internal Area	66.5m²	716ft²
Balcony	11.2m ²	120ft ²

Plot 208 - 2 Bedroom Apartment

Living/Dining Room	4.78m x 3.52m	15'8" x 11'6"
Kitchen	2.68m x 2.12m	8'10" x 6'11"
Bedroom 1	3.40m x 3.08m	11'2" x 10'1"
Bedroom 2	3.68m x 2.73m	12'1" x 8'11"
Total Internal Area	66.6m²	717ft²
Balcony	11.2m ²	120ft ²

Plot 209 - 1 Bedroom Apartment

Living/Dining Room	4.26m x 3.40m	14'0" x 11'2"
Kitchen	2.65m x 1.95m	8'8" x 6'5"
Bedroom	3.91m x 3.45m	12'10" x 11'4"
Total Internal Area	43.4m²	467ft²
Balcony	4.3m ²	46.3ft ²

Plot 210 - 1 Bedroom Apartment

Living/Dining Room	4.26m x 3.40m	14'0" x 11'2"
Kitchen	2.65m x 1.95m	8'8" x 6'5"
Bedroom	3.91m x 3.45m	12'10" x 11'4"
Total Internal Area	43.4m²	467ft²
Balcony	4.3m ²	46.3ft ²

FF - Fridge/Freezer | MW - Mirrored Wardrobe | DW - Dishwasher
 HIU - Heat Interface Unit | WD - Washer Dryer | C - Cupboard

The floor plans provided are intended to only give a general indication of the proposed floor layout, are not drawn to scale and are not intended to form part of any offer, contract, warranty or representation. Measurements are given to the widest point, are approximate and are given as a guide only. They must not be relied upon as a statement or representation of fact. Do not use these measurements for carpet sizes, appliance spaces or items of furniture. Kitchen, bathroom and utility layouts may differ to build, and specific plot sizes and layouts may vary within the same unit type. Built-in wardrobe to include mirrored sliding doors, shelf and chrome hanging rail. For further clarification regarding specific individual plots, please ask our Sales Associates.

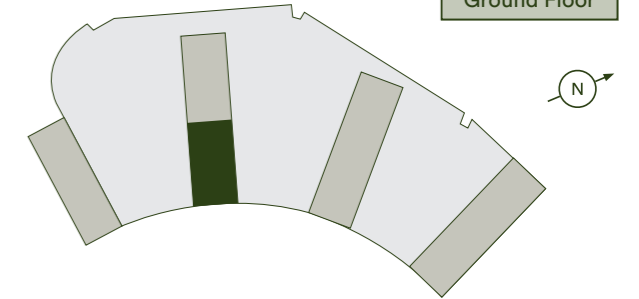
Second Floor

Plots 201, 202, 203, 204, 211 & 212



FF - Fridge/Freezer | MW - Mirrored Wardrobe | DW - Dishwasher
 HIU - Heat Interface Unit | WD - Washer Dryer | C - Cupboard

Tenth Floor
Ninth Floor
Eighth Floor
Seventh Floor
Sixth Floor
Fifth Floor
Fourth Floor
Third Floor
Second Floor
First Floor
Ground Floor



Plot 201 - 2 Bedroom Apartment

Living/Dining Room	4.90m x 4.05m	16'1" x 13'3"
Kitchen	2.30m x 3.20m	7'7" x 10'6"
Bedroom 1	3.19m x 3.40m	10'1" x 11'2"
Bedroom 2	3.85m x 2.70m	12'8" x 8'10"
Total Internal Area	70.2m²	755ft²
Balcony	11.1m ²	119ft ²

Plot 202 - 2 Bedroom Apartment

Living/Dining Room	5.23m x 4.02m	17'2" x 13'2"
Kitchen	3.18m x 1.97m	10'5" x 6'6"
Bedroom 1	3.40m x 3.08m	11'2" x 10'1"
Bedroom 2	3.87m x 2.70m	12'8" x 10"
Total Internal Area	70.2m²	755 sqft
Balcony	11.2m ²	120ft ²

Plot 203 - 2 Bedroom Apartment

Living/Dining Room	4.85m x 4.22m	15'11" x 13'10"
Kitchen	3.70m x 1.99m	12'2" x 6'6"
Bedroom 1	4.03m x 3.15m	13'3" x 10'4"
Bedroom 2	3.91m x 2.38m	12'10" x 7'10"
Total Internal Area	66m²	710ft²
Balcony	4.3m ²	46.3ft ²

Plot 204 - 2 Bedroom Apartment

Living/Dining Room	4.85m x 4.22m	15'11" x 13'10"
Kitchen	3.70m x 1.99m	12'2" x 6'6"
Bedroom 1	4.03m x 3.15m	13'3" x 10'4"
Bedroom 2	3.91m x 2.38m	12'10" x 7'10"
Total Internal Area	66m²	710ft²
Balcony	4.3m ²	46.3ft ²

Plot 211 - 1 Bedroom Apartment

Living/Dining Room	4.26m x 3.40m	14'0" x 11'2"
Kitchen	2.65m x 1.95m	8'8" x 6'5"
Bedroom	3.91m x 3.45m	12'10" x 11'4"
Total Internal Area	43.4m²	467ft²
Balcony	4.3m ²	46.3ft ²

Plot 212 - 1 Bedroom Apartment

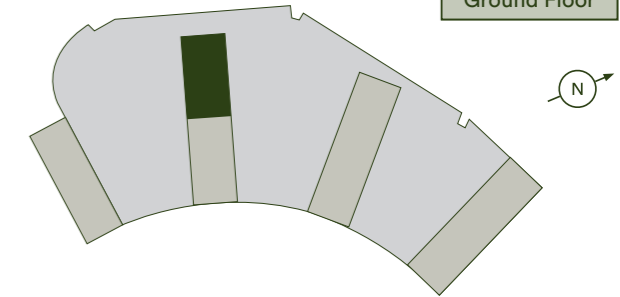
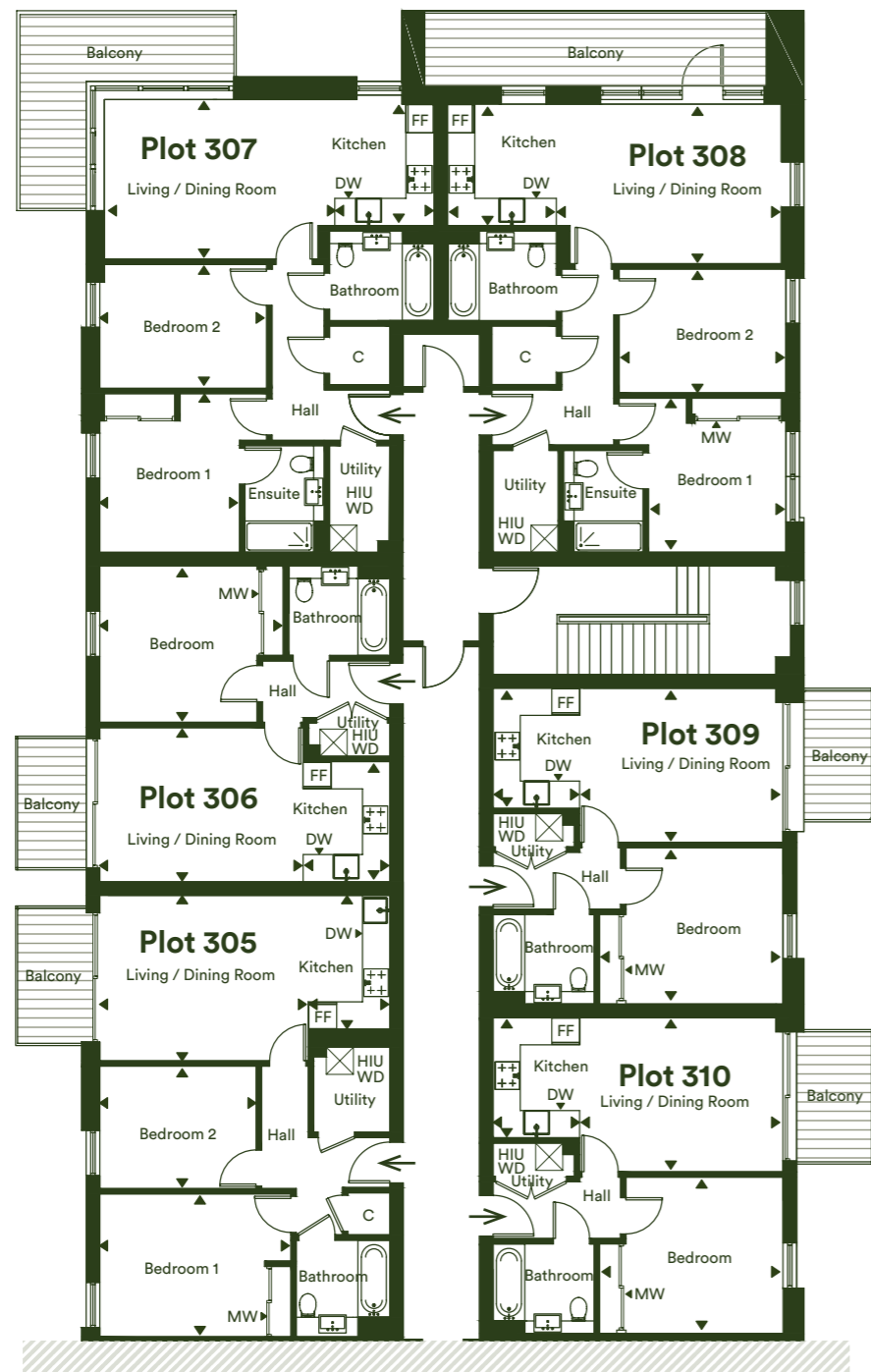
Living/Dining Room	4.36m x 3.98m	14'4" x 13'0"
Kitchen	2.73m x 1.85m	8'11" x 6'1"
Bedroom	3.91m x 3.15m	12'10" x 10'4"
Total Internal Area	44.9m²	483ft²
Balcony	4.3m ²	46.3ft ²

The floor plans provided are intended to only give a general indication of the proposed floor layout, are not drawn to scale and are not intended to form part of any offer, contract, warranty or representation. Measurements are given to the widest point, are approximate and are given as a guide only. They must not be relied upon as a statement or representation of fact. Do not use these measurements for carpet sizes, appliance spaces or items of furniture. Kitchen, bathroom and utility layouts may differ to build, and specific plot sizes and layouts may vary within the same unit type. Built-in wardrobe to include mirrored sliding doors, shelf and chrome hanging rail. For further clarification regarding specific individual plots, please ask our Sales Associates.

Third Floor

Plots 305, 306, 307, 308, 309 & 310

Tenth Floor
Ninth Floor
Eighth Floor
Seventh Floor
Sixth Floor
Fifth Floor
Fourth Floor
Third Floor
Second Floor
First Floor
Ground Floor



Plot 305 - 2 Bedroom Apartment

Living/Dining Room	4.41m x 3.65m	14'6" x 12'0"
Kitchen	2.97m x 1.80m	9'8" x 5'11"
Bedroom 1	4.03m x 3.15m	13'3" x 10'4"
Bedroom 2	3.26m x 2.70m	10'8" x 8'10"
Total Internal Area	60.6m²	652ft²
Balcony	4.3m ²	46.3ft ²

Plot 306 - 1 Bedroom Apartment

Living/Dining Room	4.26m x 3.40m	14'0" x 11'2"
Kitchen	2.65m x 1.95m	8'8" x 6'5"
Bedroom	3.91m x 3.45m	12'10" x 11'4"
Total Internal Area	43.4m²	467ft²
Balcony	4.3m ²	46.3ft ²

Plot 307 - 2 Bedroom Apartment

Living/Dining Room	4.71m x 3.52m	15'6" x 11'6"
Kitchen	2.73m x 2.49m	8'11" x 8'2"
Bedroom 1	3.40m x 3.08m	11'2" x 10'1"
Bedroom 2	3.68m x 2.73m	12'1" x 8'11"
Total Internal Area	66.5m²	716ft²
Balcony	11.2m ²	120ft ²

Plot 308 - 2 Bedroom Apartment

Living/Dining Room	4.71m x 3.52m	15'6" x 11'6"
Kitchen	2.73m x 2.49m	8'11" x 8'2"
Bedroom 1	3.40m x 3.08m	11'2" x 10'1"
Bedroom 2	3.68m x 2.73m	12'1" x 8'11"
Total Internal Area	66.5m²	716ft²
Balcony	11.2m ²	120ft ²

Plot 309 - 1 Bedroom Apartment

Living/Dining Room	4.26m x 3.40m	14'0" x 11'2"
Kitchen	2.65m x 1.95m	8'8" x 6'5"
Bedroom	3.91m x 3.45m	12'10" x 11'4"
Total Internal Area	43.4m²	467ft²
Balcony	4.3m ²	46.3ft ²

Plot 310 - 1 Bedroom Apartment

Living/Dining Room	4.26m x 3.40m	14'0" x 11'2"
Kitchen	2.65m x 1.95m	8'8" x 6'5"
Bedroom	3.91m x 3.35m	12'10" x 11'4"
Total Internal Area	43.4m²	467ft²
Balcony	4.3m ²	46.3ft ²

FF - Fridge/Freezer | MW - Mirrored Wardrobe | DW - Dishwasher
 HIU - Heat Interface Unit | WD - Washer Dryer | C - Cupboard

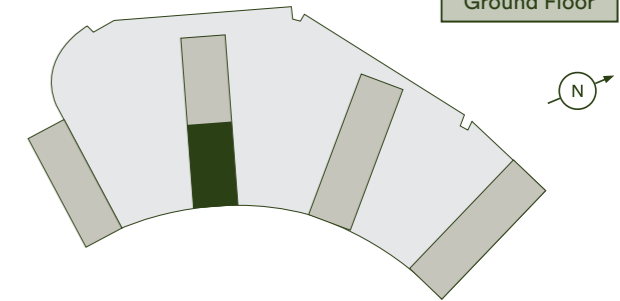
The floor plans provided are intended to only give a general indication of the proposed floor layout, are not drawn to scale and are not intended to form part of any offer, contract, warranty or representation. Measurements are given to the widest point, are approximate and are given as a guide only. They must not be relied upon as a statement or representation of fact. Do not use these measurements for carpet sizes, appliance spaces or items of furniture. Kitchen, bathroom and utility layouts may differ to build, and specific plot sizes and layouts may vary within the same unit type. Built-in wardrobe to include mirrored sliding doors, shelf and chrome hanging rail. For further clarification regarding specific individual plots, please ask our Sales Associates.

Third Floor

Plots 301, 302, 303, 304, 311 & 312



Tenth Floor
Ninth Floor
Eighth Floor
Seventh Floor
Sixth Floor
Fifth Floor
Fourth Floor
Third Floor
Second Floor
First Floor
Ground Floor



FF - Fridge/Freezer | MW - Mirrored Wardrobe | DW - Dishwasher
 HIU - Heat Interface Unit | WD - Washer Dryer | C - Cupboard

Plot 301 - 2 Bedroom Apartment

Living/Dining Room	4.90m x 4.05m	16'1" x 13'3"
Kitchen	2.30m x 3.20m	7'7" x 10'6"
Bedroom 1	3.19m x 3.40m	10'1" x 11'2"
Bedroom 2	3.85m x 2.70m	12'8" x 8'10"
Total Internal Area	70.2m²	755ft²
Balcony	11.1m ²	119ft ²

Plot 302 - 2 Bedroom Apartment

Living/Dining Room	5.23m x 4.02m	17'2" x 13'2"
Kitchen	3.18m x 1.97m	10'5" x 6'6"
Bedroom 1	3.40m x 3.08m	11'2" x 10'1"
Bedroom 2	3.87m x 2.70m	12'8" x 8'10"
Total Internal Area	70.2m²	755ft²
Balcony	11.2m ²	120ft ²

Plot 303 - 2 Bedroom Apartment

Living/Dining Room	4.85m x 4.22m	15'11" x 13'10"
Kitchen	3.70m x 1.99m	12'2" x 6'6"
Bedroom 1	4.03m x 3.15m	13'3" x 10'4"
Bedroom 2	3.91m x 2.38m	12'10" x 7'10"
Total Internal Area	66m²	710ft²
Balcony	4.3m ²	46.3ft ²

Plot 304 - 2 Bedroom Apartment

Living/Dining Room	4.85m x 4.22m	15'11" x 13'10"
Kitchen	3.70m x 1.99m	12'2" x 6'6"
Bedroom 1	4.03m x 3.15m	13'3" x 10'4"
Bedroom 2	3.91m x 2.38m	12'10" x 7'10"
Total Internal Area	66m²	710ft²
Balcony	4.3m ²	46.3ft ²

Plot 311 - 1 Bedroom Apartment

Living/Dining Room	4.26m x 3.40m	14'0" x 11'2"
Kitchen	2.65m x 1.95m	8'8" x 6'5"
Bedroom	3.91m x 3.45m	12'10" x 11'4"
Total Internal Area	43.4m²	467ft²
Balcony	4.3m ²	46.3ft ²

Plot 312 - 1 Bedroom Apartment

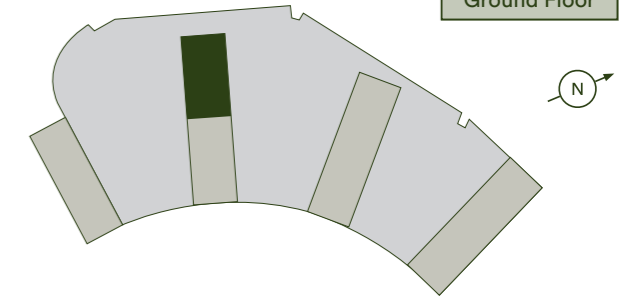
Living/Dining Room	4.36m x 3.98m	14'4" x 13'0"
Kitchen	2.73m x 1.85m	8'11" x 6'1"
Bedroom	3.91m x 3.15m	12'10" x 10'4"
Total Internal Area	44.9m²	483ft²
Balcony	4.3m ²	46.3ft ²

The floor plans provided are intended to only give a general indication of the proposed floor layout, are not drawn to scale and are not intended to form part of any offer, contract, warranty or representation. Measurements are given to the widest point, are approximate and are given as a guide only. They must not be relied upon as a statement or representation of fact. Do not use these measurements for carpet sizes, appliance spaces or items of furniture. Kitchen, bathroom and utility layouts may differ to build, and specific plot sizes and layouts may vary within the same unit type. Built-in wardrobe to include mirrored sliding doors, shelf and chrome hanging rail. For further clarification regarding specific individual plots, please ask our Sales Associates.

Fourth Floor

Plots 405, 406, 407, 408, 409 & 410

Tenth Floor
Ninth Floor
Eighth Floor
Seventh Floor
Sixth Floor
Fifth Floor
Fourth Floor
Third Floor
Second Floor
First Floor
Ground Floor



Plot 405 - 2 Bedroom Apartment

Living/Dining Room	4.41m x 3.65m	14'6" x 12'0"
Kitchen	2.95m x 1.80m	9'8" x 5'11"
Bedroom 1	4.03m x 3.15m	13'3" x 10'4"
Bedroom 2	3.26m x 2.70m	10'8" x 8'10"
Total Internal Area	60.6m²	652ft²
Balcony	4.3m ²	46.3ft ²

Plot 406 - 1 Bedroom Apartment

Living/Dining Room	4.26m x 3.40m	14'0" x 11'2"
Kitchen	2.65m x 1.95m	8'8" x 6'5"
Bedroom	3.91m x 3.34m	12'10" x 11'4"
Total Internal Area	43.4m²	467ft²
Balcony	4.3m ²	46.3ft ²

Plot 407 - 2 Bedroom Apartment

Living/Dining Room	4.71m x 3.52m	15'6" x 11'6"
Kitchen	2.73 x 2.49m	8'11" x 8'2"
Bedroom 1	3.40 x 3.08m	11'2" x 10'1"
Bedroom 2	3.68m x 2.73m	12'1" x 8'11"
Total Internal Area	66.5m²	716ft²
Balcony	11.2m ²	120ft ²

Plot 408 - 2 Bedroom Apartment

Living/Dining Room	4.71m x 3.52m	15'6" x 11'6"
Kitchen	2.73m x 2.49m	8'11" x 8'2"
Bedroom 1	3.40m x 3.08m	11'2" x 10'1"
Bedroom 2	3.68m x 2.73m	12'1" x 8'11"
Total Internal Area	66.5m²	716ft²
Balcony	11.2m ²	120ft ²

Plot 409 - 1 Bedroom Apartment

Living/Dining Room	4.26m x 3.40m	14'0" x 11'2"
Kitchen	2.65m x 1.95m	8'8" x 6'5"
Bedroom	3.91m x 3.34m	12'10" x 11'4"
Total Internal Area	43.4m²	467ft²
Balcony	4.3m ²	46.3ft ²

Plot 410 - 1 Bedroom Apartment

Living/Dining Room	4.26m x 3.40m	14'0" x 11'2"
Kitchen	2.65m x 1.95m	8'8" x 6'5"
Bedroom	3.91m x 3.34m	12'10" x 11'4"
Total Internal Area	43.4m²	467ft²
Balcony	4.3m ²	46.3ft ²

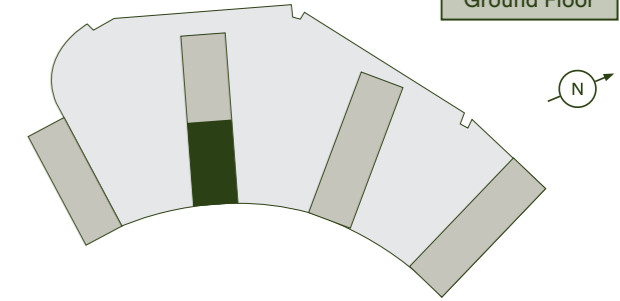
FF - Fridge/Freezer | MW - Mirrored Wardrobe | DW - Dishwasher
 HIU - Heat Interface Unit | WD - Washer Dryer | C - Cupboard

The floor plans provided are intended to only give a general indication of the proposed floor layout, are not drawn to scale and are not intended to form part of any offer, contract, warranty or representation. Measurements are given to the widest point, are approximate and are given as a guide only. They must not be relied upon as a statement or representation of fact. Do not use these measurements for carpet sizes, appliance spaces or items of furniture. Kitchen, bathroom and utility layouts may differ to build, and specific plot sizes and layouts may vary within the same unit type. Built-in wardrobe to include mirrored sliding doors, shelf and chrome hanging rail. For further clarification regarding specific individual plots, please ask our Sales Associates.

Fourth Floor

Plots 401, 402, 403, 404, 411 & 412

Tenth Floor
Ninth Floor
Eighth Floor
Seventh Floor
Sixth Floor
Fifth Floor
Fourth Floor
Third Floor
Second Floor
First Floor
Ground Floor



Plot 401 - 2 Bedroom Apartment

Living/Dining Room	4.90m x 4.05m	16'1" x 13'3"
Kitchen	3.20m x 2.30m	10'6" x 7'7"
Bedroom 1	3.40m x 3.10m	11'2" x 10'1"
Bedroom 2	3.85m x 2.70m	12'8" x 8'10"
Total Internal Area	70.2m²	755ft²
Balcony	11.2m ²	120ft ²

Plot 402 - 2 Bedroom Apartment

Living/Dining Room	5.23m x 4.04m	17'2" x 13'2"
Kitchen	3.18m x 1.97m	10'5" x 6'6"
Bedroom 1	3.40m x 3.08m	11'2" x 10'1"
Bedroom 2	3.87m x 2.70m	12'8" x 8'10"
Total Internal Area	70.2m²	755ft²
Balcony	11.2m ²	120ft ²

Plot 403 - 2 Bedroom Apartment

Living/Dining Room	4.85m x 4.22m	15'11" x 13'10"
Kitchen	3.70m x 1.99m	12'2" x 6'6"
Bedroom 1	4.03m x 3.15m	13'3" x 10'4"
Bedroom 2	3.91m x 2.38m	12'10" x 7'10"
Total Internal Area	66m²	710ft²
Balcony	4.3m ²	46.3ft ²

Plot 404 - 2 Bedroom Apartment

Living/Dining Room	4.85m x 4.22m	15'11" x 13'10"
Kitchen	3.70m x 1.99m	12'2" x 6'6"
Bedroom 1	4.03m x 3.15m	13'3" x 10'4"
Bedroom 2	3.91m x 2.38m	12'10" x 7'10"
Total Internal Area	66m²	710ft²
Balcony	4.3m ²	46.3ft ²

Plot 411 - 1 Bedroom Apartment

Living/Dining Room	4.26m x 3.40m	14'0" x 11'2"
Kitchen	2.65m x 1.95m	8'8" x 6'5"
Bedroom	3.91m x 3.34m	12'10" x 11'4"
Total Internal Area	43.4m²	467ft²
Balcony	4.3m ²	46.3ft ²

Plot 412 - 1 Bedroom Apartment

Living/Dining Room	4.42m x 3.68m	14'6" x 12'1"
Kitchen	2.93m x 1.79m	9'7" x 5'10"
Bedroom	3.91m x 3.45m	12'10" x 11'4"
Total Internal Area	45m²	484ft²
Balcony	4.3m ²	46.3ft ²

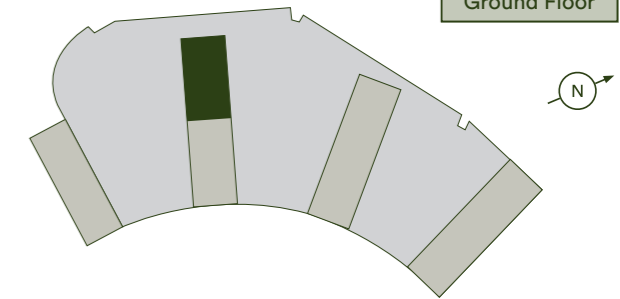
FF - Fridge/Freezer | MW - Mirrored Wardrobe | DW - Dishwasher
 HIU - Heat Interface Unit | WD - Washer Dryer | C - Cupboard

The floor plans provided are intended to only give a general indication of the proposed floor layout, are not drawn to scale and are not intended to form part of any offer, contract, warranty or representation. Measurements are given to the widest point, are approximate and are given as a guide only. They must not be relied upon as a statement or representation of fact. Do not use these measurements for carpet sizes, appliance spaces or items of furniture. Kitchen, bathroom and utility layouts may differ to build, and specific plot sizes and layouts may vary within the same unit type. Built-in wardrobe to include mirrored sliding doors, shelf and chrome hanging rail. For further clarification regarding specific individual plots, please ask our Sales Associates.

Fifth Floor

Plots 505, 506, 507, 508, 509 & 510

Tenth Floor
Ninth Floor
Eighth Floor
Seventh Floor
Sixth Floor
Fifth Floor
Fourth Floor
Third Floor
Second Floor
First Floor
Ground Floor



Plot 505 - 2 Bedroom Apartment

Living/Dining Room	4.41m x 3.65m	14'6" x 12'0"
Kitchen	2.95m x 1.80m	9'8" x 5'11"
Bedroom 1	4.03m x 3.15m	13'3" x 10'4"
Bedroom 2	3.26m x 2.70m	10'8" x 8'10"
Total Internal Area	60.6m²	652ft²
Balcony	4.3m ²	46.3ft ²

Plot 506 - 1 Bedroom Apartment

Living/Dining Room	4.26m x 3.40m	14'0" x 11'2"
Kitchen	2.65m x 1.95m	8'8" x 6'5"
Bedroom	3.91m x 3.34m	12'10" x 11'4"
Total Internal Area	43.4m²	467ft²
Balcony	4.3m ²	46.3ft ²

Plot 507 - 2 Bedroom Apartment

Living/Dining Room	4.71m x 3.52m	15'6" x 11'6"
Kitchen	2.73m x 2.49m	8'11" x 8'2"
Bedroom 1	3.40m x 3.08m	11'2" x 10'1"
Bedroom 2	3.68m x 2.73m	12'1" x 8'11"
Total Internal Area	66.5m²	716ft²
Balcony	11.2m ²	120ft ²

Plot 508 - 2 Bedroom Apartment

Living/Dining Room	4.71m x 3.52m	15'6" x 11'6"
Kitchen	2.73m x 2.49m	8'11" x 8'2"
Bedroom 1	3.40m x 3.08m	11'2" x 10'1"
Bedroom 2	3.68m x 2.73m	12'1" x 8'11"
Total Internal Area	66.5m²	716ft²
Balcony	11.2m ²	120ft ²

Plot 509 - 1 Bedroom Apartment

Living/Dining Room	4.26m x 3.40m	14'0" x 11'2"
Kitchen	2.65m x 1.95m	8'8" x 6'5"
Bedroom	3.91m x 3.34m	12'10" x 11'4"
Total Internal Area	43.4m²	467ft²
Balcony	4.3m ²	46.3ft ²

Plot 510 - 1 Bedroom Apartment

Living/Dining Room	4.26m x 3.40m	14'0" x 11'2"
Kitchen	2.65m x 1.95m	8'8" x 6'5"
Bedroom	3.91m x 3.34m	12'10" x 11'4"
Total Internal Area	43.4m²	467ft²
Balcony	4.3m ²	46.3ft ²

FF - Fridge/Freezer | MW - Mirrored Wardrobe | DW - Dishwasher
 HIU - Heat Interface Unit | WD - Washer Dryer | C - Cupboard

The floor plans provided are intended to only give a general indication of the proposed floor layout, are not drawn to scale and are not intended to form part of any offer, contract, warranty or representation. Measurements are given to the widest point, are approximate and are given as a guide only. They must not be relied upon as a statement or representation of fact. Do not use these measurements for carpet sizes, appliance spaces or items of furniture. Kitchen, bathroom and utility layouts may differ to build, and specific plot sizes and layouts may vary within the same unit type. Built-in wardrobe to include mirrored sliding doors, shelf and chrome hanging rail. For further clarification regarding specific individual plots, please ask our Sales Associates.

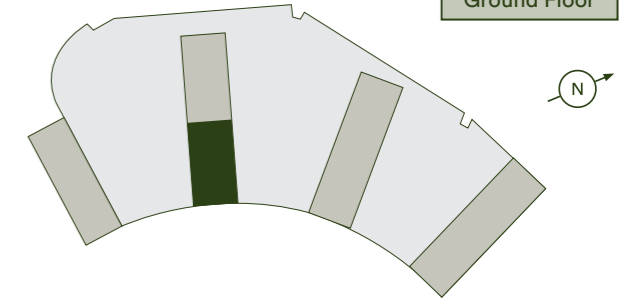
Fifth Floor

Plots 501, 502, 503, 504, 511 & 512



FF - Fridge/Freezer | MW - Mirrored Wardrobe | DW - Dishwasher
 HIU - Heat Interface Unit | WD - Washer Dryer | C - Cupboard

Tenth Floor
Ninth Floor
Eighth Floor
Seventh Floor
Sixth Floor
Fifth Floor
Fourth Floor
Third Floor
Second Floor
First Floor
Ground Floor



Plot 501 - 2 Bedroom Apartment

Living/Dining Room	4.90m x 4.05m	16'1" x 13'3"
Kitchen	3.20m x 2.30m	10'6" x 7'7"
Bedroom 1	3.40m x 3.10m	11'2" x 10'1"
Bedroom 2	3.85m x 2.70m	12'8" x 8'10"
Total Internal Area	70.2m²	755ft²
Balcony	11.2m ²	120ft ²

Plot 502 - 2 Bedroom Apartment

Living/Dining Room	5.23m x 4.04m	17'2" x 13'2"
Kitchen	3.18m x 1.97m	10'5" x 6'6"
Bedroom 1	3.40m x 3.08m	11'2" x 10'1"
Bedroom 2	3.87m x 2.70m	12'8" x 8'10"
Total Internal Area	70.2m²	755ft²
Balcony	11.2m ²	120ft ²

Plot 503 - 2 Bedroom Apartment

Living/Dining Room	4.85m x 4.22m	15'11" x 13'10"
Kitchen	3.70m x 1.99m	12'2" x 6'6"
Bedroom 1	4.03m x 3.15m	13'3" x 10'4"
Bedroom 2	3.91m x 2.38m	12'10" x 7'10"
Total Internal Area	66m²	710ft²
Balcony	4.3m ²	46.3ft ²

Plot 504 - 2 Bedroom Apartment

Living/Dining Room	4.85m x 4.22m	15'11" x 13'10"
Kitchen	3.70m x 1.99m	12'2" x 6'6"
Bedroom 1	4.03m x 3.15m	13'3" x 10'4"
Bedroom 2	3.91m x 2.38m	12'10" x 7'10"
Total Internal Area	66m²	710ft²
Balcony	4.3m ²	46.3ft ²

Plot 511 - 1 Bedroom Apartment

Living/Dining Room	4.26m x 3.40m	14'0" x 11'2"
Kitchen	2.65m x 1.95m	8'8" x 6'5"
Bedroom	3.91m x 3.34m	12'10" x 11'4"
Total Internal Area	43.4m²	467ft²
Balcony	4.3m ²	46.3ft ²

Plot 512 - 1 Bedroom Apartment

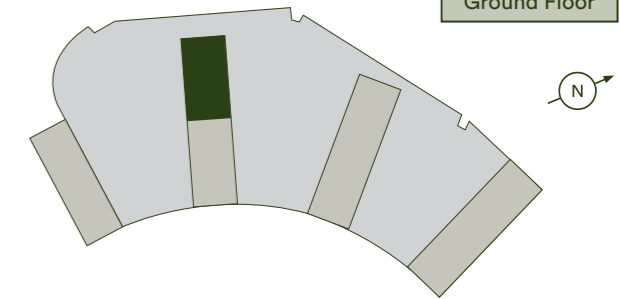
Living/Dining Room	4.42m x 3.68m	14'6" x 12'1"
Kitchen	2.93m x 1.79m	9'7" x 5'10"
Bedroom	3.91m x 3.45m	12'10" x 11'4"
Total Internal Area	45m²	484ft²
Balcony	4.3m ²	46.3ft ²

The floor plans provided are intended to only give a general indication of the proposed floor layout, are not drawn to scale and are not intended to form part of any offer, contract, warranty or representation. Measurements are given to the widest point, are approximate and are given as a guide only. They must not be relied upon as a statement or representation of fact. Do not use these measurements for carpet sizes, appliance spaces or items of furniture. Kitchen, bathroom and utility layouts may differ to build, and specific plot sizes and layouts may vary within the same unit type. Built-in wardrobe to include mirrored sliding doors, shelf and chrome hanging rail. For further clarification regarding specific individual plots, please ask our Sales Associates.

Sixth Floor

Plots 605, 606, 607, 608, 609 & 610

Tenth Floor
Ninth Floor
Eighth Floor
Seventh Floor
Sixth Floor
Fifth Floor
Fourth Floor
Third Floor
Second Floor
First Floor
Ground Floor



Plot 605 - 2 Bedroom Apartment

Living/Dining Room	4.41m x 3.65m	14'6" x 12'0"
Kitchen	2.95m x 1.80m	9'8" x 5'11"
Bedroom 1	4.03m x 3.15m	13'3" x 10'4"
Bedroom 2	3.26m x 2.70m	10'8" x 8'10"
Total Internal Area	60.6m²	652ft²
Balcony	4.3m ²	46.3ft ²

Plot 606 - 1 Bedroom Apartment

Living/Dining Room	4.26m x 3.40m	14'0" x 11'2"
Kitchen	2.65m x 1.95m	8'8" x 6'5"
Bedroom	3.91m x 3.34m	12'10" x 11'4"
Total Internal Area	43.4m²	467ft²
Balcony	4.3m ²	46.3ft ²

Plot 607 - 2 Bedroom Apartment

Living/Dining Room	4.71m x 3.52m	15'6" x 11'6"
Kitchen	2.73m x 2.49m	8'11" x 8'2"
Bedroom 1	3.40m x 3.08m	11'2" x 10'1"
Bedroom 2	3.68m x 2.73m	12'1" x 8'11"
Total Internal Area	66.5m²	716ft²
Balcony	11.2m ²	120ft ²

Plot 608 - 2 Bedroom Apartment

Living/Dining Room	4.71m x 3.52m	15'6" x 11'6"
Kitchen	2.73m x 2.49m	8'11" x 8'2"
Bedroom 1	3.40m x 3.08m	11'2" x 10'1"
Bedroom 2	3.68m x 2.73m	12'1" x 8'11"
Total Internal Area	66.5m²	716ft²
Balcony	11.2m ²	120ft ²

Plot 609 - 1 Bedroom Apartment

Living/Dining Room	4.26m x 3.40m	14'0" x 11'2"
Kitchen	2.65m x 1.95m	8'8" x 6'5"
Bedroom	3.91m x 3.34m	12'10" x 11'4"
Total Internal Area	43.4m²	467ft²
Balcony	4.3m ²	46.3ft ²

Plot 610 - 1 Bedroom Apartment

Living/Dining Room	4.26m x 3.40m	14'0" x 11'2"
Kitchen	2.65m x 1.95m	8'8" x 6'5"
Bedroom	3.91m x 3.34m	12'10" x 11'4"
Total Internal Area	43.4m²	467ft²
Balcony	4.3m ²	46.3ft ²

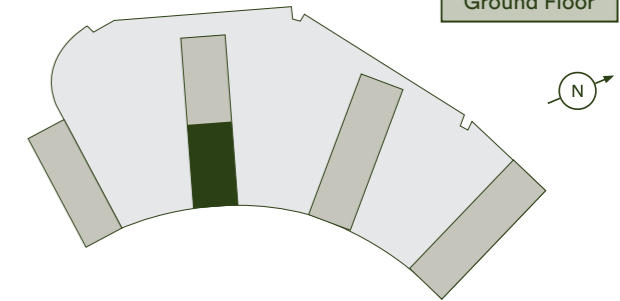
FF - Fridge/Freezer | MW - Mirrored Wardrobe | DW - Dishwasher
 HIU - Heat Interface Unit | WD - Washer Dryer | C - Cupboard

The floor plans provided are intended to only give a general indication of the proposed floor layout, are not drawn to scale and are not intended to form part of any offer, contract, warranty or representation. Measurements are given to the widest point, are approximate and are given as a guide only. They must not be relied upon as a statement or representation of fact. Do not use these measurements for carpet sizes, appliance spaces or items of furniture. Kitchen, bathroom and utility layouts may differ to build, and specific plot sizes and layouts may vary within the same unit type. Built-in wardrobe to include mirrored sliding doors, shelf and chrome hanging rail. For further clarification regarding specific individual plots, please ask our Sales Associates.

Sixth Floor

Plots 601, 602, 603, 604, 611 & 612

Tenth Floor
Ninth Floor
Eighth Floor
Seventh Floor
Sixth Floor
Fifth Floor
Fourth Floor
Third Floor
Second Floor
First Floor
Ground Floor



FF - Fridge/Freezer | MW - Mirrored Wardrobe | DW - Dishwasher
 HIU - Heat Interface Unit | WD - Washer Dryer | C - Cupboard

Plot 601 - 2 Bedroom Apartment

Living/Dining Room	4.90m x 4.05m	16'1" x 13'3"
Kitchen	3.20m x 2.30m	10'6" x 7'7"
Bedroom 1	3.40m x 3.10m	11'2" x 10'1"
Bedroom 2	3.85m x 2.70m	12'8" x 8'10"
Total Internal Area	70.2m²	755ft²
Balcony	11.2m ²	120ft ²

Plot 602 - 2 Bedroom Apartment

Living/Dining Room	5.23m x 4.02m	17'2" x 13'2"
Kitchen	3.18m x 1.97m	10'5" x 6'6"
Bedroom 1	3.40m x 3.08m	11'2" x 10'1"
Bedroom 2	3.87m x 2.70m	12'8" x 8'10"
Total Internal Area	70.2m²	755ft²
Balcony	11.2m ²	120ft ²

Plot 603 - 2 Bedroom Apartment

Living/Dining Room	4.24m x 3.64m	13'11" x 11'11"
Kitchen	3.28m x 2.57m	10'9" x 8'5"
Bedroom 1	4.43m x 2.80m	14'6" x 9'2"
Bedroom 2	3.34m x 2.96m	10'11" x 9'9"
Total Internal Area	66m²	710ft²
Balcony	4.3m ²	46.3ft ²

Plot 604 - 2 Bedroom Apartment

Living/Dining Room	4.85m x 4.22m	15'11" x 13'10"
Kitchen	3.70m x 1.99m	12'2" x 6'6"
Bedroom 1	4.03m x 3.15m	13'3" x 10'4"
Bedroom 2	3.91m x 2.38m	12'10" x 7'10"
Total Internal Area	66m²	710ft²
Balcony	4.3m ²	46.3ft ²

Plot 611 - 1 Bedroom Apartment

Living/Dining Room	4.26m x 3.40m	14'0" x 11'2"
Kitchen	2.65m x 1.95m	8'8" x 6'5"
Bedroom	3.91m x 3.34m	12'10" x 11'4"
Total Internal Area	43.4m²	467ft²
Balcony	4.3m ²	46.3ft ²

Plot 612 - 1 Bedroom Apartment

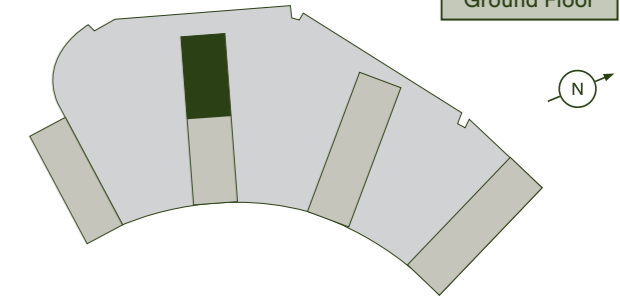
Living/Dining Room	4.42m x 3.68m	14'6" x 12'1"
Kitchen	2.93m x 1.79m	9'7" x 5'10"
Bedroom	3.91m x 3.45m	12'10" x 11'4"
Total Internal Area	45m²	484ft²
Balcony	4.3m ²	46.3ft ²

The floor plans provided are intended to only give a general indication of the proposed floor layout, are not drawn to scale and are not intended to form part of any offer, contract, warranty or representation. Measurements are given to the widest point, are approximate and are given as a guide only. They must not be relied upon as a statement or representation of fact. Do not use these measurements for carpet sizes, appliance spaces or items of furniture. Kitchen, bathroom and utility layouts may differ to build, and specific plot sizes and layouts may vary within the same unit type. Built-in wardrobe to include mirrored sliding doors, shelf and chrome hanging rail. For further clarification regarding specific individual plots, please ask our Sales Associates.

Seventh Floor

Plots 705, 706, 707, 708, 709 & 710

Tenth Floor
Ninth Floor
Eighth Floor
Seventh Floor
Sixth Floor
Fifth Floor
Fourth Floor
Third Floor
Second Floor
First Floor
Ground Floor



Plot 705 - 2 Bedroom Apartment

Living/Dining Room	4.41m x 3.65m	14'6" x 12'0"
Kitchen	2.95m x 1.80m	9'8" x 5'11"
Bedroom 1	4.03m x 3.15m	13'3" x 10'4"
Bedroom 2	3.26m x 2.70m	10'8" x 8'10"
Total Internal Area	60.6m²	652ft²
Balcony	4.3m ²	46.3ft ²

Plot 706 - 1 Bedroom Apartment

Living/Dining Room	4.26m x 3.40m	14'0" x 11'2"
Kitchen	2.65m x 1.95m	8'8" x 6'5"
Bedroom	3.91m x 3.34m	12'10" x 11'4"
Total Internal Area	43.4m²	467ft²
Balcony	4.3m ²	46.3ft ²

Plot 707 - 2 Bedroom Apartment

Living/Dining Room	4.71m x 3.52m	15'6" x 11'6"
Kitchen	2.73m x 2.49m	8'11" x 8'2"
Bedroom 1	3.40m x 3.08m	11'2" x 10'1"
Bedroom 2	3.68m x 2.73m	12'1" x 8'11"
Total Internal Area	66.5m²	716ft²
Balcony	11.2m ²	120ft ²

Plot 708 - 2 Bedroom Apartment

Living/Dining Room	4.71m x 3.52m	15'6" x 11'6"
Kitchen	2.73m x 2.49m	8'11" x 8'2"
Bedroom 1	3.40m x 3.08m	11'2" x 10'1"
Bedroom 2	3.68m x 2.73m	12'1" x 8'11"
Total Internal Area	66.5m²	716ft²
Balcony	11.2m ²	120ft ²

Plot 709 - 1 Bedroom Apartment

Living/Dining Room	4.26m x 3.40m	14'0" x 11'2"
Kitchen	2.65m x 1.95m	8'8" x 6'5"
Bedroom	3.91m x 3.34m	12'10" x 11'4"
Total Internal Area	43.4m²	467ft²
Balcony	4.3m ²	46.3ft ²

Plot 710 - 1 Bedroom Apartment

Living/Dining Room	4.26m x 3.40m	14'0" x 11'2"
Kitchen	2.65m x 1.95m	8'8" x 6'5"
Bedroom	3.91m x 3.34m	12'10" x 11'4"
Total Internal Area	43.4m²	467ft²
Balcony	4.3m ²	46.3ft ²

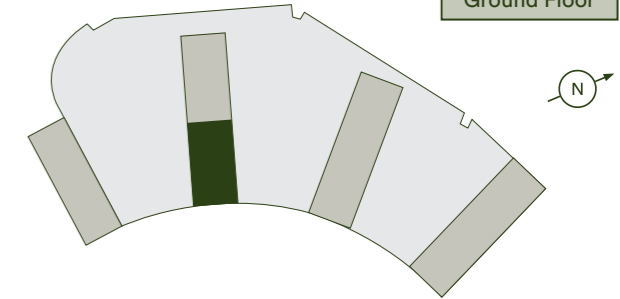
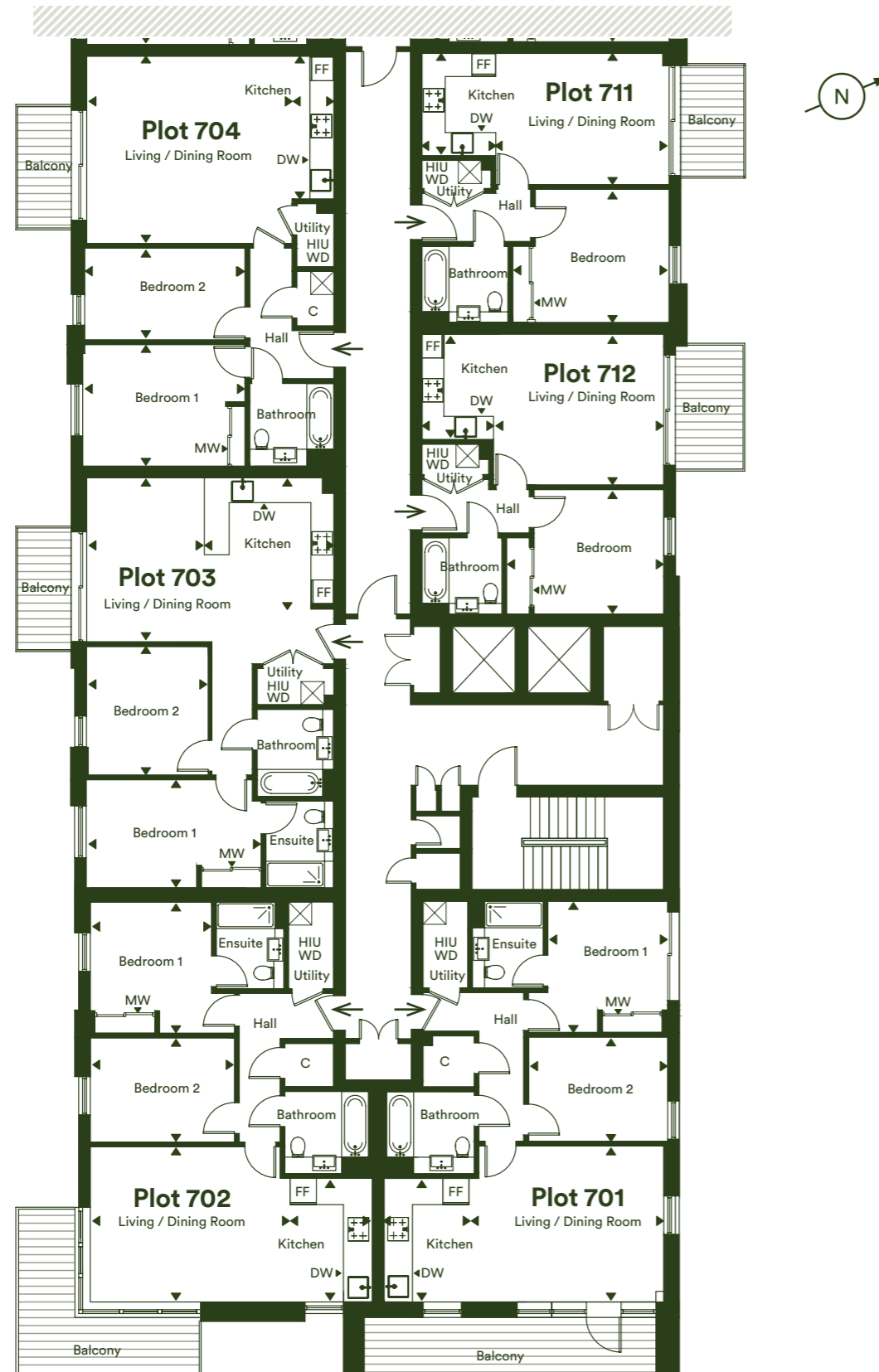
FF - Fridge/Freezer | MW - Mirrored Wardrobe | DW - Dishwasher
 HIU - Heat Interface Unit | WD - Washer Dryer | C - Cupboard

The floor plans provided are intended to only give a general indication of the proposed floor layout, are not drawn to scale and are not intended to form part of any offer, contract, warranty or representation. Measurements are given to the widest point, are approximate and are given as a guide only. They must not be relied upon as a statement or representation of fact. Do not use these measurements for carpet sizes, appliance spaces or items of furniture. Kitchen, bathroom and utility layouts may differ to build, and specific plot sizes and layouts may vary within the same unit type. Built-in wardrobe to include mirrored sliding doors, shelf and chrome hanging rail. For further clarification regarding specific individual plots, please ask our Sales Associates.

Seventh Floor

Plots 701, 702, 703, 704, 711 & 712

Tenth Floor
Ninth Floor
Eighth Floor
Seventh Floor
Sixth Floor
Fifth Floor
Fourth Floor
Third Floor
Second Floor
First Floor
Ground Floor



FF - Fridge/Freezer | MW - Mirrored Wardrobe | DW - Dishwasher
 HIU - Heat Interface Unit | WD - Washer Dryer | C - Cupboard

Plot 701 - 2 Bedroom Apartment

Living/Dining Room	4.90m x 4.05m	16'1" x 13'3"
Kitchen	3.20m x 2.30m	10'6" x 7'7"
Bedroom 1	3.40m x 3.10m	11'2" x 10'1"
Bedroom 2	3.85m x 2.70m	12'8" x 8'10"
Total Internal Area	70.2m²	755ft²
Balcony	11.2m ²	120ft ²

Plot 702 - 2 Bedroom Apartment

Living/Dining Room	5.23m x 4.02m	17'2" x 13'2"
Kitchen	3.18m x 1.97m	10'5" x 6'6"
Bedroom 1	3.40m x 3.08m	11'2" x 10'1"
Bedroom 2	3.87m x 2.70m	12'8" x 8'10"
Total Internal Area	70.2m²	755ft²
Balcony	11.2m ²	120ft ²

Plot 703 - 2 Bedroom Apartment

Living/Dining Room	4.24m x 3.64m	13'11" x 11'11"
Kitchen	3.28m x 2.57m	10'9" x 8'5"
Bedroom 1	4.43m x 2.80m	14'6" x 9'2"
Bedroom 2	3.34m x 2.96m	10'11" x 9'9"
Total Internal Area	66m²	710ft²
Balcony	4.3m ²	46.3ft ²

Plot 704 - 2 Bedroom Apartment

Living/Dining Room	4.82m x 4.22m	15'11" x 13'10"
Kitchen	3.70m x 1.99m	12'2" x 6'6"
Bedroom 1	4.03m x 3.15m	13'3" x 10'4"
Bedroom 2	3.91m x 2.38m	12'10" x 7'10"
Total Internal Area	66m²	710ft²
Balcony	4.4m ²	46.3ft ²

Plot 711 - 1 Bedroom Apartment

Living/Dining Room	4.26m x 3.40m	14'0" x 11'2"
Kitchen	2.65m x 1.95m	8'8" x 6'5"
Bedroom	3.91m x 3.34m	12'10" x 11'4"
Total Internal Area	43.4m²	467ft²
Balcony	4.3m ²	46.3ft ²

Plot 712 - 1 Bedroom Apartment

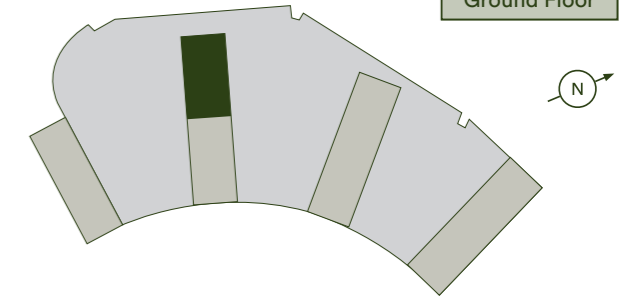
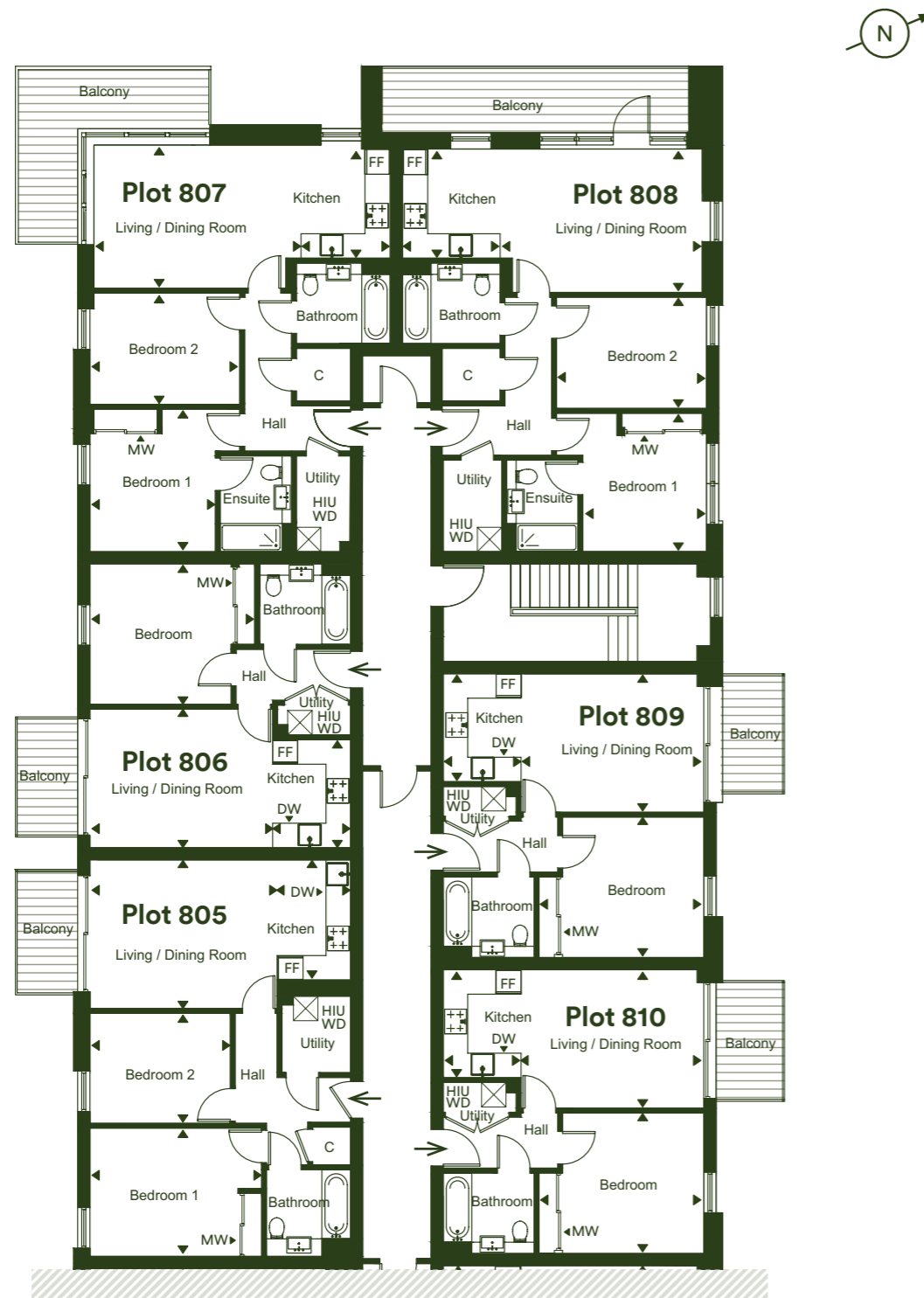
Living/Dining Room	4.42m x 3.68m	14'6" x 12'1"
Kitchen	2.93m x 1.79m	9'7" x 5'10"
Bedroom	3.91m x 3.45m	12'10" x 11'4"
Total Internal Area	45m²	484ft²
Balcony	4.3m ²	46.3ft ²

The floor plans provided are intended to only give a general indication of the proposed floor layout, are not drawn to scale and are not intended to form part of any offer, contract, warranty or representation. Measurements are given to the widest point, are approximate and are given as a guide only. They must not be relied upon as a statement or representation of fact. Do not use these measurements for carpet sizes, appliance spaces or items of furniture. Kitchen, bathroom and utility layouts may differ to build, and specific plot sizes and layouts may vary within the same unit type. Built-in wardrobe to include mirrored sliding doors, shelf and chrome hanging rail. For further clarification regarding specific individual plots, please ask our Sales Associates.

Eighth Floor

Plots 805, 806, 807, 808, 809 & 810

Tenth Floor
Ninth Floor
Eighth Floor
Seventh Floor
Sixth Floor
Fifth Floor
Fourth Floor
Third Floor
Second Floor
First Floor
Ground Floor



Plot 805 - 2 Bedroom Apartment

Living/Dining Room	4.41m x 3.65m	14'6" x 12'0"
Kitchen	2.95m x 1.80m	9'8" x 5'11"
Bedroom 1	4.03m x 3.15m	13'3" x 10'4"
Bedroom 2	3.26m x 2.70m	10'8" x 8'10"
Total Internal Area	60.6m²	652ft²
Balcony	4.3m ²	46.3ft ²

Plot 806 - 1 Bedroom Apartment

Living/Dining Room	4.26m x 3.40m	14'0" x 11'2"
Kitchen	2.65m x 1.95m	8'8" x 6'5"
Bedroom	3.91m x 3.34m	12'10" x 11'4"
Total Internal Area	43.4m²	467ft²
Balcony	4.3m ²	46.3ft ²

Plot 807 - 2 Bedroom Apartment

Living/Dining Room	4.71m x 3.52m	15'6" x 11'6"
Kitchen	2.73m x 2.49m	8'11" x 8'2"
Bedroom 1	3.40m x 3.08m	11'2" x 10'1"
Bedroom 2	3.68m x 2.73m	12'1" x 8'11"
Total Internal Area	66.5m²	716ft²
Balcony	11.2m ²	120ft ²

Plot 808 - 2 Bedroom Apartment

Living/Dining Room	4.71m x 3.52m	15'6" x 11'6"
Kitchen	2.73m x 2.49m	8'11" x 8'2"
Bedroom 1	3.40m x 3.08m	11'2" x 10'1"
Bedroom 2	3.68m x 2.73m	12'1" x 8'11"
Total Internal Area	66.5m²	716ft²
Balcony	11.2m ²	120ft ²

Plot 809 - 1 Bedroom Apartment

Living/Dining Room	4.26m x 3.40m	14'0" x 11'2"
Kitchen	2.65m x 1.95m	8'8" x 6'5"
Bedroom	3.91m x 3.34m	12'10" x 11'4"
Total Internal Area	43.4m²	467ft²
Balcony	4.3m ²	46.3ft ²

Plot 810 - 1 Bedroom Apartment

Living/Dining Room	4.26m x 3.40m	14'0" x 11'2"
Kitchen	2.65m x 1.95m	8'8" x 6'5"
Bedroom	3.91m x 3.34m	12'10" x 11'4"
Total Internal Area	43.4m²	467ft²
Balcony	4.3m ²	46.3ft ²

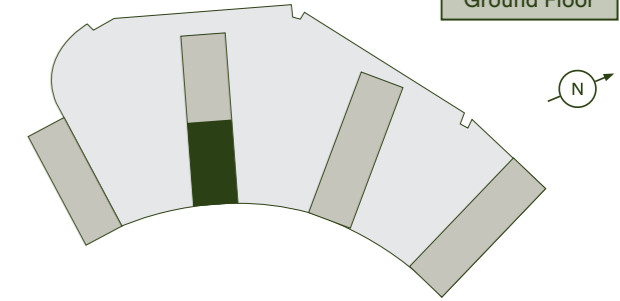
FF - Fridge/Freezer | MW - Mirrored Wardrobe | DW - Dishwasher
 HIU - Heat Interface Unit | WD - Washer Dryer | C - Cupboard

The floor plans provided are intended to only give a general indication of the proposed floor layout, are not drawn to scale and are not intended to form part of any offer, contract, warranty or representation. Measurements are given to the widest point, are approximate and are given as a guide only. They must not be relied upon as a statement or representation of fact. Do not use these measurements for carpet sizes, appliance spaces or items of furniture. Kitchen, bathroom and utility layouts may differ to build, and specific plot sizes and layouts may vary within the same unit type. Built-in wardrobe to include mirrored sliding doors, shelf and chrome hanging rail. For further clarification regarding specific individual plots, please ask our Sales Associates.

Eighth Floor

Plots 801, 802, 803, 804, 811 & 812

Tenth Floor
Ninth Floor
Eighth Floor
Seventh Floor
Sixth Floor
Fifth Floor
Fourth Floor
Third Floor
Second Floor
First Floor
Ground Floor



Plot 801 - 2 Bedroom Apartment

Living/Dining Room	4.90m x 4.05m	16'1" x 13'3"
Kitchen	3.20m x 2.30m	10'6" x 7'7"
Bedroom 1	3.40m x 3.10m	11'2" x 10'1"
Bedroom 2	3.85m x 2.70m	12'8" x 8'10"
Total Internal Area	70.2m²	755ft²
Balcony	11.2m ²	120ft ²

Plot 802 - 2 Bedroom Apartment

Living/Dining Room	5.23m x 4.02m	17'2" x 13'2"
Kitchen	3.18m x 1.97m	10'5" x 6'6"
Bedroom 1	3.40m x 3.08m	11'2" x 10'1"
Bedroom 2	3.87m x 2.70m	12'8" x 8'10"
Total Internal Area	70.2m²	755ft²
Balcony	11.2m ²	120ft ²

Plot 803 - 2 Bedroom Apartment

Living/Dining Room	4.24m x 3.64m	13'11" x 11'11"
Kitchen	3.28m x 2.57m	10'9" x 8'5"
Bedroom 1	4.43m x 2.80m	14'6" x 9'2"
Bedroom 2	3.34m x 2.96m	10'11" x 9'9"
Total Internal Area	66m²	710ft²
Balcony	4.3m ²	46.3ft ²

Plot 804 - 2 Bedroom Apartment

Living/Dining Room	4.85m x 4.22m	15'11" x 13'10"
Kitchen	3.70m x 1.99m	12'2" x 6'6"
Bedroom 1	4.03m x 3.15m	13'3" x 10'4"
Bedroom 2	3.91m x 2.38m	12'10" x 7'10"
Total Internal Area	66m²	710ft²
Balcony	4.4m ²	46.3ft ²

Plot 811 - 1 Bedroom Apartment

Living/Dining Room	4.26m x 3.40m	14'0" x 11'2"
Kitchen	2.65m x 1.95m	8'8" x 6'5"
Bedroom	3.91m x 3.34m	12'10" x 11'4"
Total Internal Area	43.4m²	467ft²
Balcony	4.3m ²	46.3ft ²

Plot 812 - 1 Bedroom Apartment

Living/Dining Room	4.42m x 3.68m	14'6" x 12'1"
Kitchen	2.93m x 1.79m	9'7" x 5'10"
Bedroom	3.91m x 3.45m	12'10" x 11'4"
Total Internal Area	45m²	484ft²
Balcony	4.3m ²	46.3ft ²

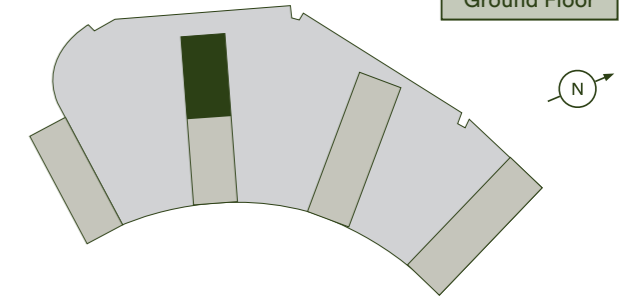
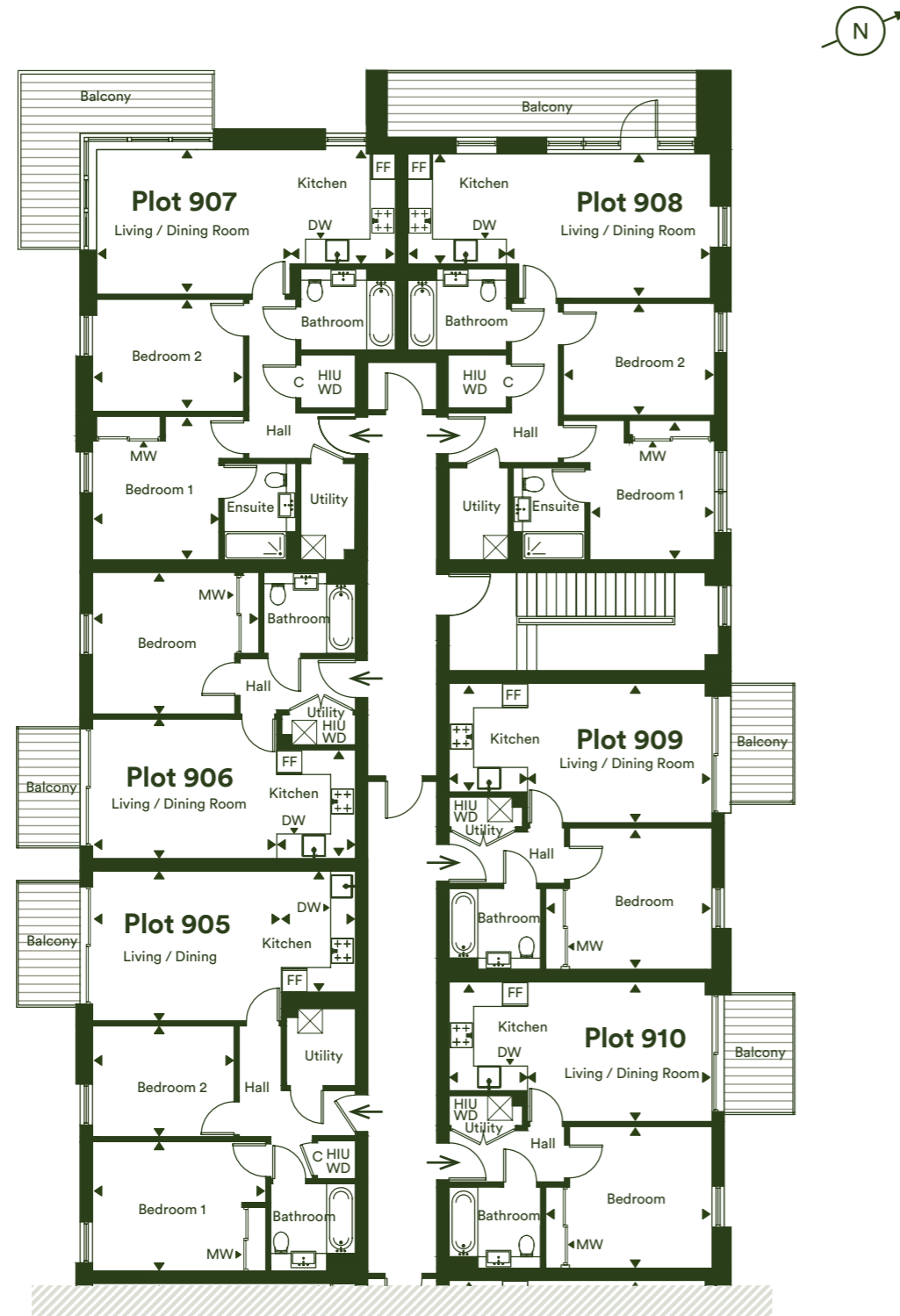
FF - Fridge/Freezer | MW - Mirrored Wardrobe | DW - Dishwasher
 HIU - Heat Interface Unit | WD - Washer Dryer | C - Cupboard

The floor plans provided are intended to only give a general indication of the proposed floor layout, are not drawn to scale and are not intended to form part of any offer, contract, warranty or representation. Measurements are given to the widest point, are approximate and are given as a guide only. They must not be relied upon as a statement or representation of fact. Do not use these measurements for carpet sizes, appliance spaces or items of furniture. Kitchen, bathroom and utility layouts may differ to build, and specific plot sizes and layouts may vary within the same unit type. Built-in wardrobe to include mirrored sliding doors, shelf and chrome hanging rail. For further clarification regarding specific individual plots, please ask our Sales Associates.

Ninth Floor

Plots 905, 906, 907, 908, 909 & 910

Tenth Floor
Ninth Floor
Eighth Floor
Seventh Floor
Sixth Floor
Fifth Floor
Fourth Floor
Third Floor
Second Floor
First Floor
Ground Floor



Plot 905 - 2 Bedroom Apartment

Living/Dining Room	4.41m x 3.65m	14'6" x 12'0"
Kitchen	2.95m x 1.80m	9'8" x 5'11"
Bedroom 1	4.03m x 3.15m	13'3" x 10'4"
Bedroom 2	3.26m x 2.70m	10'8" x 8'10"
Total Internal Area	60.6m²	652ft²
Balcony	4.3m ²	46.3ft ²

Plot 906 - 1 Bedroom Apartment

Living/Dining Room	4.26m x 3.40m	14'0" x 11'2"
Kitchen	2.65m x 1.95m	8'8" x 6'5"
Bedroom	3.91m x 3.34m	12'10" x 11'4"
Total Internal Area	43.4m²	467ft²
Balcony	4.3m ²	46.3ft ²

Plot 907 - 2 Bedroom Apartment

Living/Dining Room	4.71m x 3.52m	15'6" x 11'6"
Kitchen	2.73m x 2.49m	8'11" x 8'2"
Bedroom 1	3.40m x 3.08m	11'2" x 10'1"
Bedroom 2	3.68m x 2.73m	12'1" x 8'11"
Total Internal Area	66.5m²	716ft²
Balcony	11.2m ²	120ft ²

Plot 908 - 2 Bedroom Apartment

Living/Dining Room	4.71m x 3.52m	15'6" x 11'6"
Kitchen	2.73m x 2.49m	8'11" x 8'2"
Bedroom 1	3.40m x 3.08m	11'2" x 10'1"
Bedroom 2	3.68m x 2.73m	12'1" x 8'11"
Total Internal Area	66.5m²	716ft²
Balcony	11.2m ²	120ft ²

Plot 909 - 1 Bedroom Apartment

Living/Dining Room	4.26m x 3.40m	14'0" x 11'2"
Kitchen	2.65m x 1.95m	8'8" x 6'5"
Bedroom	3.91m x 3.34m	12'10" x 11'4"
Total Internal Area	43.4m²	467ft²
Balcony	4.3m ²	46.3ft ²

Plot 910 - 1 Bedroom Apartment

Living/Dining Room	4.26m x 3.40m	14'0" x 11'2"
Kitchen	2.65m x 1.95m	8'8" x 6'5"
Bedroom	3.91m x 3.34m	12'10" x 11'4"
Total Internal Area	43.4m²	467ft²
Balcony	4.3m ²	46.3ft ²

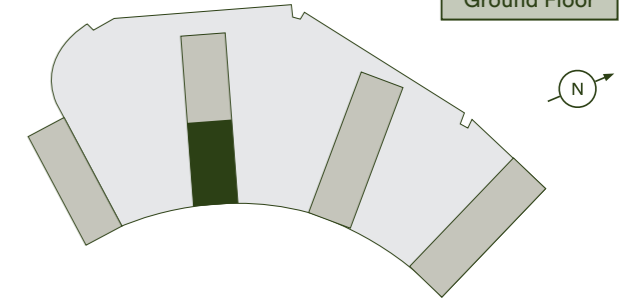
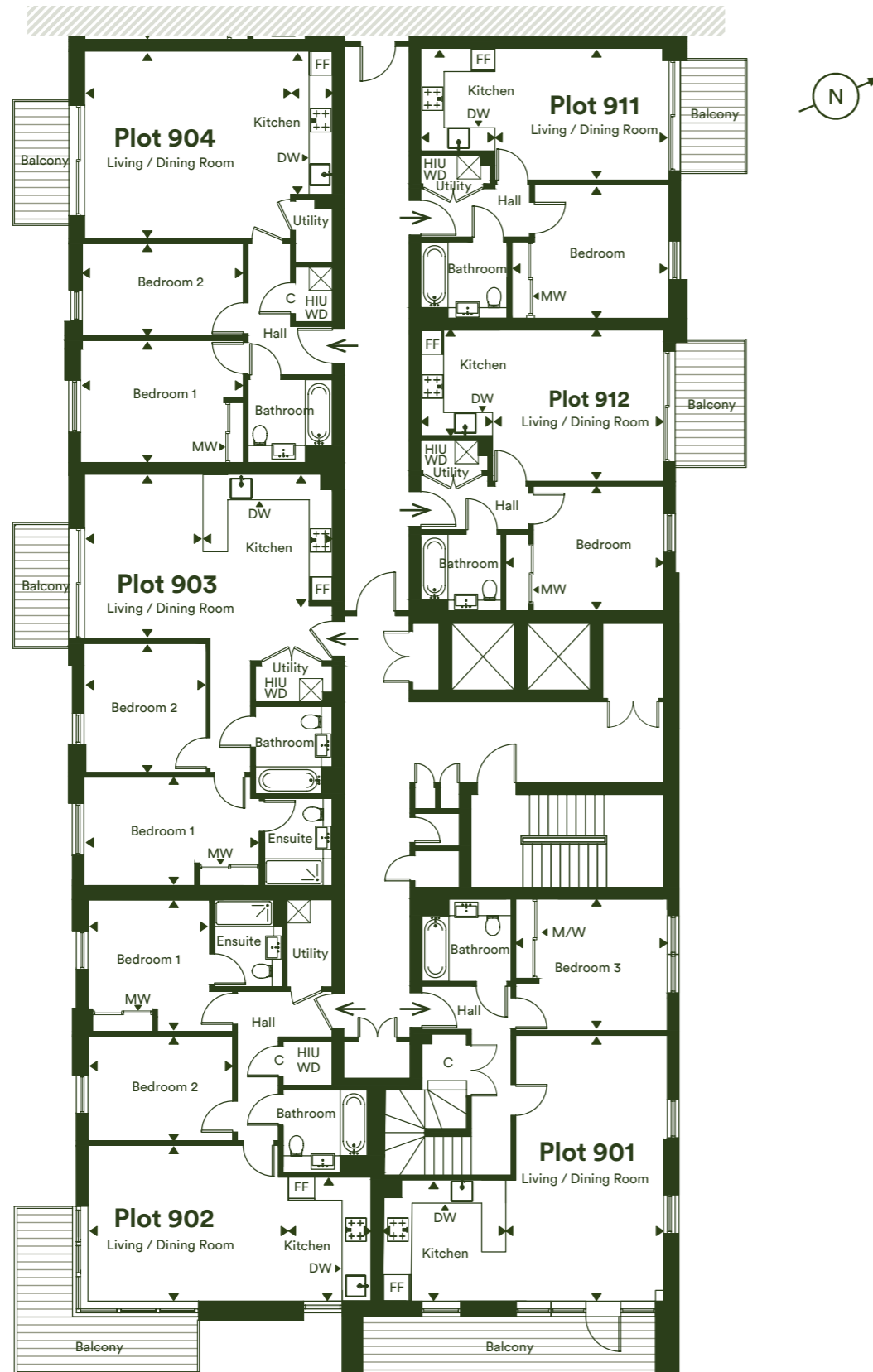
FF - Fridge/Freezer | MW - Mirrored Wardrobe | DW - Dishwasher
 HIU - Heat Interface Unit | WD - Washer Dryer | C - Cupboard

The floor plans provided are intended to only give a general indication of the proposed floor layout, are not drawn to scale and are not intended to form part of any offer, contract, warranty or representation. Measurements are given to the widest point, are approximate and are given as a guide only. They must not be relied upon as a statement or representation of fact. Do not use these measurements for carpet sizes, appliance spaces or items of furniture. Kitchen, bathroom and utility layouts may differ to build, and specific plot sizes and layouts may vary within the same unit type. Built-in wardrobe to include mirrored sliding doors, shelf and chrome hanging rail. For further clarification regarding specific individual plots, please ask our Sales Associates.

Ninth Floor

Plots 901*, 902, 903, 904, 911 & 912

Tenth Floor
Ninth Floor
Eighth Floor
Seventh Floor
Sixth Floor
Fifth Floor
Fourth Floor
Third Floor
Second Floor
First Floor
Ground Floor



FF - Fridge/Freezer | MW - Mirrored Wardrobe | DW - Dishwasher
 HIU - Heat Interface Unit | WD - Washer Dryer | C - Cupboard

Plot 901 - 3 Bedroom Duplex Apartment Lower Floor

Living/Dining Room	6.84m x 3.80m	22'5" x 12'6"
Kitchen	3.40m x 2.93m	11'2" x 9'7"
Bedroom 3	3.91m x 3.40m	12'10" x 11'2"
Balcony	16m ²	172ft ²

Plot 902 - 2 Bedroom Apartment

Living/Dining Room	5.23m x 4.02m	17'2" x 13'2"
Kitchen	3.18m x 1.97m	10'5" x 6'6"
Bedroom 1	3.40m x 3.08m	11'2" x 10'1"
Bedroom 2	3.87m x 2.70m	12'8" x 8'10"
Total Internal Area	70.2m²	755ft²
Balcony	11.2m ²	120ft ²

Plot 903 - 2 Bedroom Apartment

Living/Dining Room	4.24m x 3.64m	13'11" x 11'11"
Kitchen	3.28m x 2.57m	10'9" x 8'5"
Bedroom 1	4.43m x 2.80m	14'6" x 9'2"
Bedroom 2	3.34m x 2.96m	10'11" x 9'9"
Total Internal Area	66m²	710ft²
Balcony	4.3m ²	46.3ft ²

Plot 904 - 2 Bedroom Apartment

Living/Dining Room	4.85m x 4.22m	15'11" x 13'10"
Kitchen	3.70m x 1.99m	12'2" x 6'6"
Bedroom 1	4.03m x 3.15m	13'3" x 10'4"
Bedroom 2	3.91m x 2.38m	12'10" x 7'10"
Total Internal Area	66m²	710ft²
Balcony	4.4m ²	46.3ft ²

Plot 911 - 1 Bedroom Apartment

Living/Dining Room	4.26m x 3.40m	14'0" x 11'2"
Kitchen	2.65m x 1.95m	8'8" x 6'5"
Bedroom	3.91m x 3.34m	12'10" x 11'4"
Total Internal Area	43.4m²	467ft²
Balcony	4.3m ²	46.3ft ²

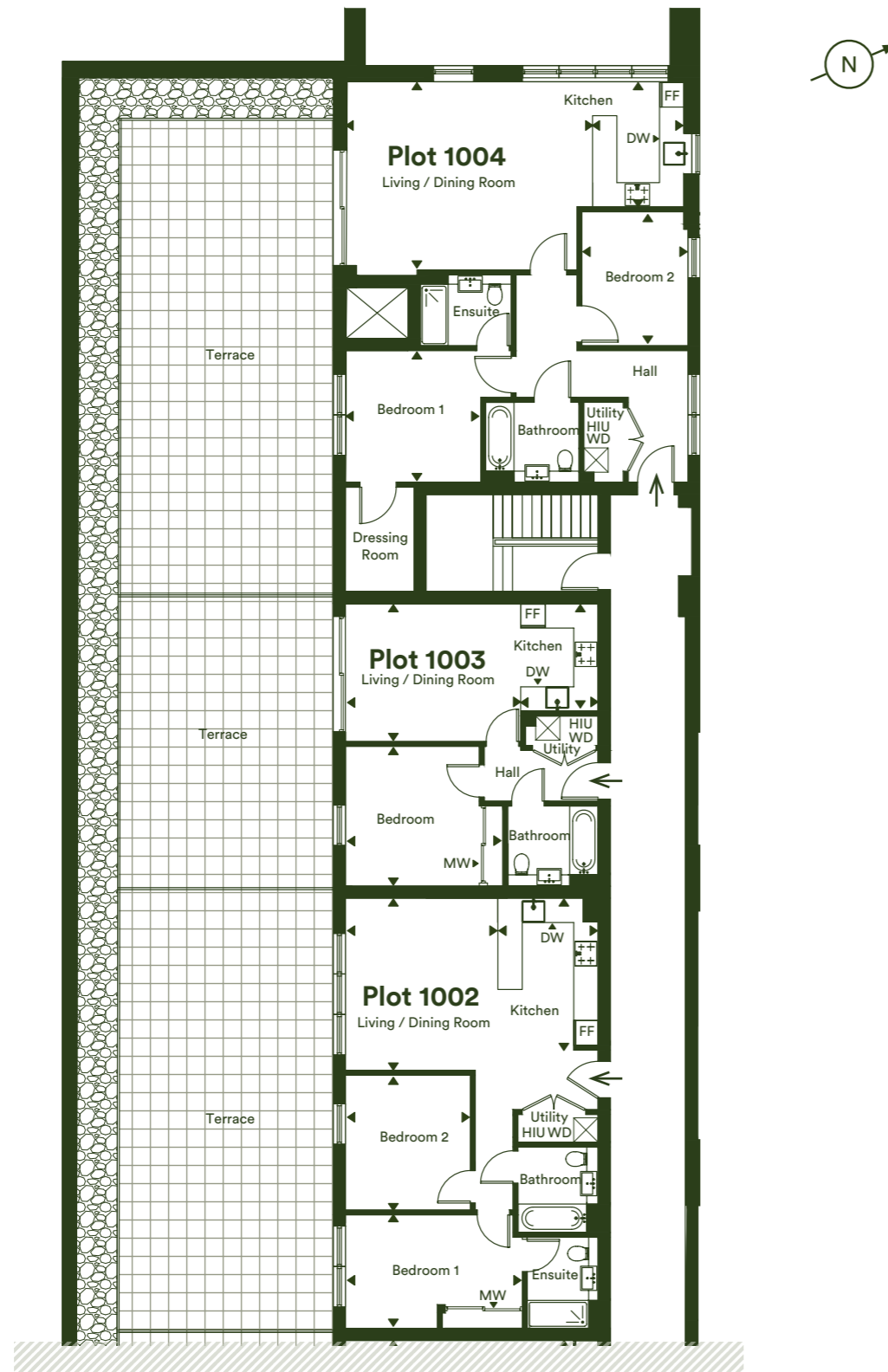
Plot 912 - 1 Bedroom Apartment

Living/Dining Room	4.42m x 3.68m	14'6" x 12'1"
Kitchen	2.93m x 1.79m	9'7" x 5'10"
Bedroom	3.91m x 3.45m	12'10" x 11'4"
Total Internal Area	45m²	484ft²
Balcony	4.3m ²	46.3ft ²

The floor plans provided are intended to only give a general indication of the proposed floor layout, are not drawn to scale and are not intended to form part of any offer, contract, warranty or representation. Measurements are given to the widest point, are approximate and are given as a guide only. They must not be relied upon as a statement or representation of fact. Do not use these measurements for carpet sizes, appliance spaces or items of furniture. Kitchen, bathroom and utility layouts may differ to build, and specific plot sizes and layouts may vary within the same unit type. Built-in wardrobe to include mirrored sliding doors, shelf and chrome hanging rail. For further clarification regarding specific individual plots, please ask our Sales Associates.

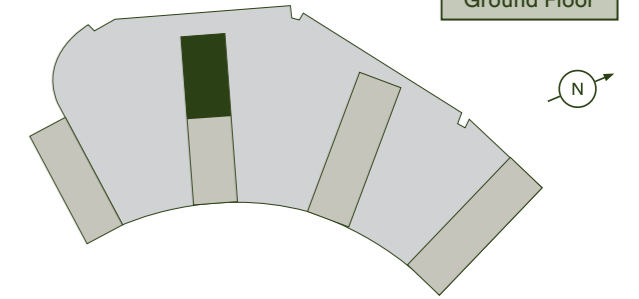
Tenth Floor

Plots 1002, 1003 & 1004



FF - Fridge/Freezer | MW - Mirrored Wardrobe | DW - Dishwasher
 HIU - Heat Interface Unit | WD - Washer Dryer | C - Cupboard

Tenth Floor
Ninth Floor
Eighth Floor
Seventh Floor
Sixth Floor
Fifth Floor
Fourth Floor
Third Floor
Second Floor
First Floor
Ground Floor



Plot 1002 - 2 Bedroom Apartment

Living/Dining Room	4.25m x 3.76m	13'11" x 12'4"
Kitchen	3.63m x 2.57m	11'11" x 8'5"
Bedroom 1	4.43m x 2.80m	14'6" x 9'2"
Bedroom 2	3.33m x 3.08m	10'11" x 10'1"
Total Internal Area	66.9m²	720ft²
Terrace	52m ²	559ft ²

Plot 1003 - 1 Bedroom Apartment

Living/Dining Room	4.26m x 3.40m	14'0" x 11'2"
Kitchen	2.65m x 1.95m	8'8" x 6'5"
Bedroom 1	3.91m x 3.34m	12'10" x 11'4"
Total Internal Area	43.4m²	467ft²
Terrace	34.9m ²	375ft ²

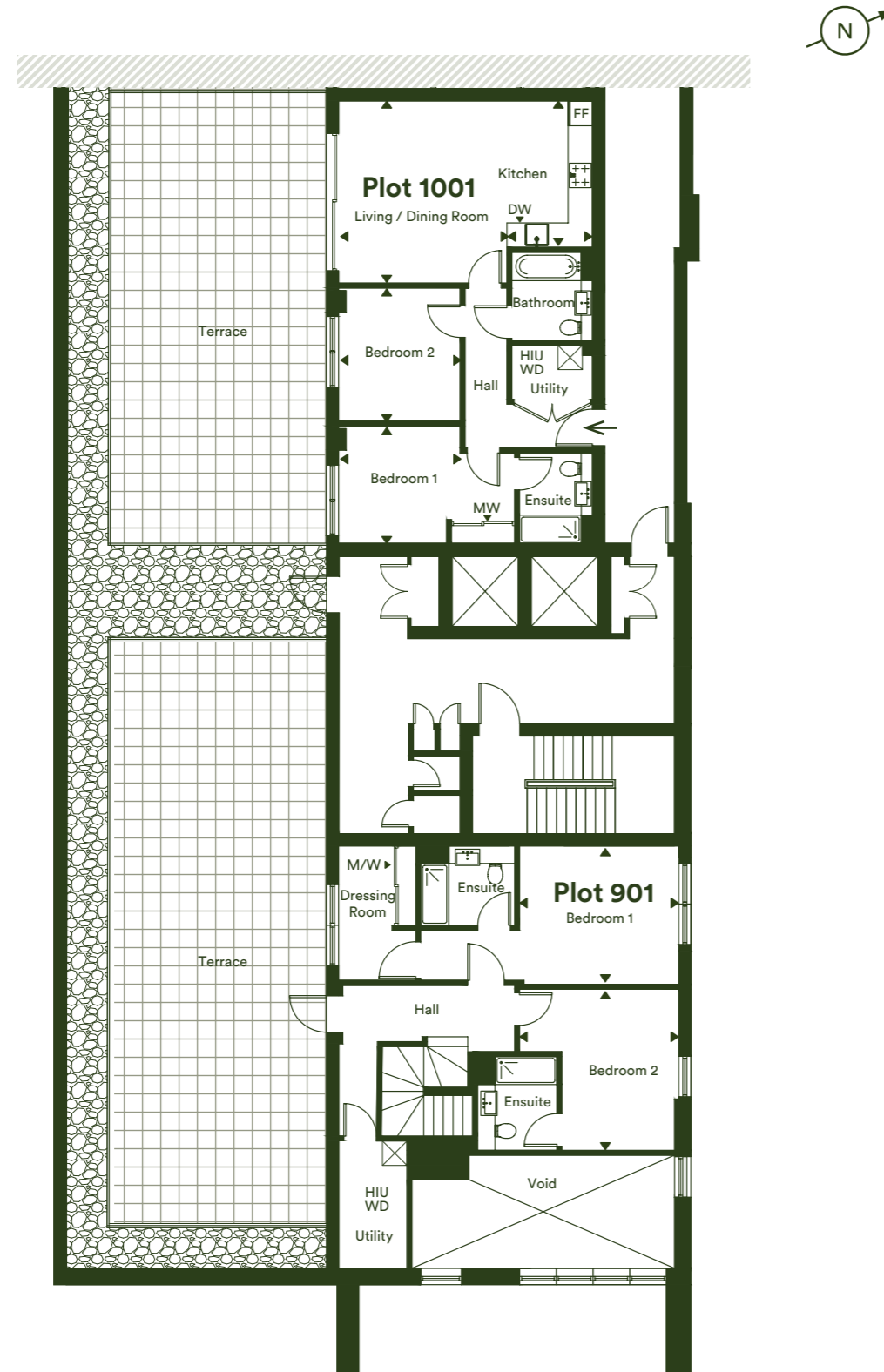
Plot 1004 - 2 Bedroom Apartment

Living/Dining Room	5.78m x 4.80m	18'11" x 15'9"
Kitchen	3.09m x 2.52m	10'1" x 8'3"
Bedroom 1	3.78m x 3.34m	12'5" x 10'11"
Bedroom 2	3.26m x 2.88m	10'8" x 9'5"
Total Internal Area	83.4m²	898ft²
Terrace	55.3m ²	595ft ²

The floor plans provided are intended to only give a general indication of the proposed floor layout, are not drawn to scale and are not intended to form part of any offer, contract, warranty or representation. Measurements are given to the widest point, are approximate and are given as a guide only. They must not be relied upon as a statement or representation of fact. Do not use these measurements for carpet sizes, appliance spaces or items of furniture. Kitchen, bathroom and utility layouts may differ to build, and specific plot sizes and layouts may vary within the same unit type. Built-in wardrobe to include mirrored sliding doors, shelf and chrome hanging rail. For further clarification regarding specific individual plots, please ask our Sales Associates.

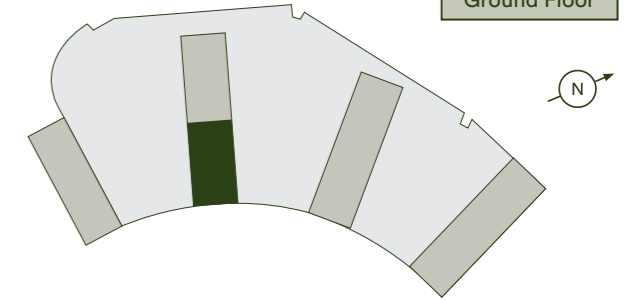
Tenth Floor

Plots 901* & 1001



FF - Fridge/Freezer | MW - Mirrored Wardrobe | DW - Dishwasher
 HIU - Heat Interface Unit | WD - Washer Dryer | C - Cupboard

Tenth Floor
Ninth Floor
Eighth Floor
Seventh Floor
Sixth Floor
Fifth Floor
Fourth Floor
Third Floor
Second Floor
First Floor
Ground Floor



Plot 901 - 3 Bedroom Duplex Apartment Upper Floor

Dressing room	3.18m x 2.07m	10'5" x 6'9"
Utility	3.20m x 1.73m	10'6" x 5'8"
Bedroom 1	6.13m x 3.35m	20'1" x 11'0"
Bedroom 2	3.86m x 3.83m	12'8" x 12'7"
Terrace	66.9m ²	720ft ²

Plot 1001 - 2 Bedroom Apartment

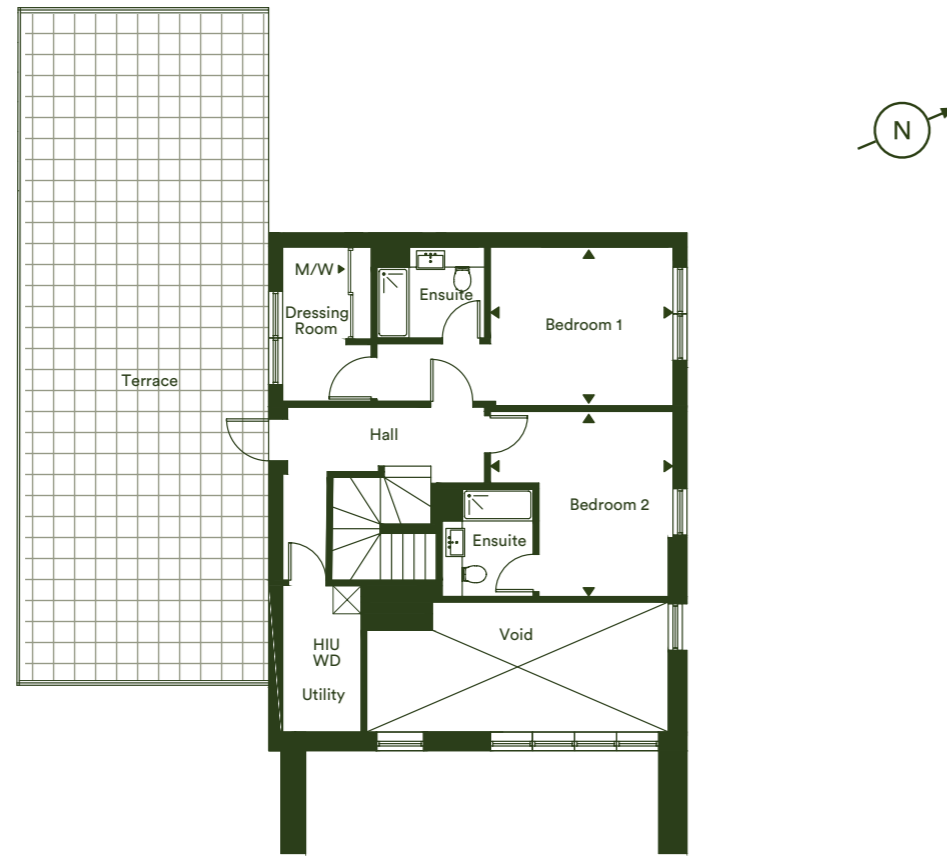
Living/Dining Room	4.48m x 4.23m	14'8" x 13'10"
Kitchen	3.60m x 2.10m	11'10" x 6'11"
Bedroom 1	4.43m x 2.90m	14'6" x 9'6"
Bedroom 2	3.27m x 3.08m	10'9" x 10'1"
Total Internal Area	68.7m²	739ft²
Terrace	55.3m ²	595ft ²

The floor plans provided are intended to only give a general indication of the proposed floor layout, are not drawn to scale and are not intended to form part of any offer, contract, warranty or representation. Measurements are given to the widest point, are approximate and are given as a guide only. They must not be relied upon as a statement or representation of fact. Do not use these measurements for carpet sizes, appliance spaces or items of furniture. Kitchen, bathroom and utility layouts may differ to build, and specific plot sizes and layouts may vary within the same unit type. Built-in wardrobe to include mirrored sliding doors, shelf and chrome hanging rail. For further clarification regarding specific individual plots, please ask our Sales Associates.

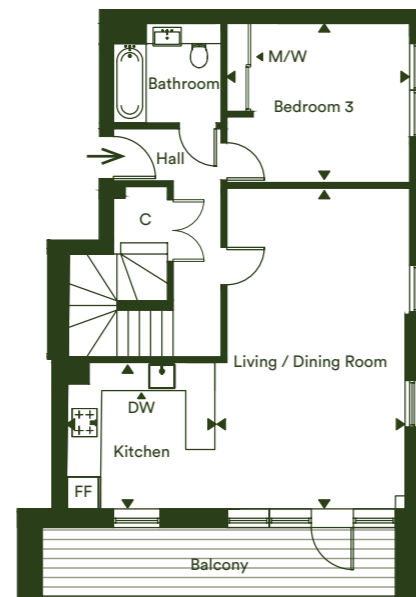
3 Bedroom Duplex Apartment

Plot 901

Upper Floor

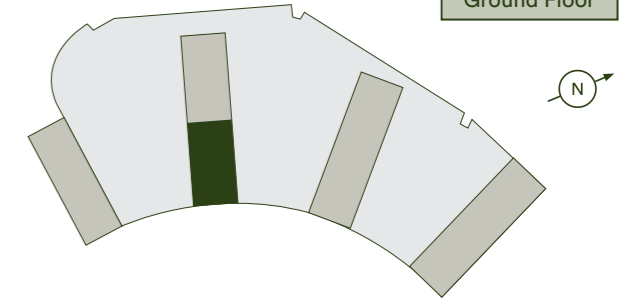


Lower Floor



FF - Fridge/Freezer | MW - Mirrored Wardrobe | DW - Dishwasher
 HIU - Heat Interface Unit | WD - Washer Dryer | C - Cupboard

- Tenth Floor
- Ninth Floor
- Eighth Floor
- Seventh Floor
- Sixth Floor
- Fifth Floor
- Fourth Floor
- Third Floor
- Second Floor
- First Floor
- Ground Floor



Plot 901 - 3 Bedroom Duplex Apartment

Living/Dining Room	6.84m x 3.80m	22' 5" x 12'6"
Kitchen	3.40m x 2.93m	11'2" x 9'7"
Bedroom 1	6.13m x 3.35m	20'1" x 11'0"
Bedroom 2	3.86m x 3.83m	12'8" x 12'7"
Bedroom 3	3.91m x 3.40m	12'10" x 11'2"
Dressing room	3.18m x 2.07m	10'5" x 6'9"
Utility	3.20m x 1.73m	10'6" x 5'8"
Total Internal Area	136.4m²	1468ft²
Balcony	16m ²	172ft ²
Terrace	66.9m ²	720ft ²

The floor plans provided are intended to only give a general indication of the proposed floor layout, are not drawn to scale and are not intended to form part of any offer, contract, warranty or representation. Measurements are given to the widest point, are approximate and are given as a guide only. They must not be relied upon as a statement or representation of fact. Do not use these measurements for carpet sizes, appliance spaces or items of furniture. Kitchen, bathroom and utility layouts may differ to build, and specific plot sizes and layouts may vary within the same unit type. Built-in wardrobe to include mirrored sliding doors, shelf and chrome hanging rail. For further clarification regarding specific individual plots, please ask our Sales Associates.



**BANKSIDE
GARDENS**
Green Park

We're here and ready to help

When you're ready to move in, L&Q will give you a personal introduction to your new L&Q home.

The L&Q new homes warranty

We will demonstrate how to operate your appliances and heating and talk you through any special features, all of which will be detailed in your Home User Guide.

We are confident that you will be delighted with your new L&Q home, but for added peace of mind, all of our homes also come with an L&Q new homes warranty.

This lasts for two years from the date of legal completion. For the 2-year period, we guarantee items supplied as part of your new home, covering repairs needed due to faulty workmanship or materials. The NHBC Buildmark cover is valid for 10 years from the date the building was finished.

Your sales associate can provide you with more details on the L&Q warranty and NHBC Buildmark cover. You can also access the full terms and conditions on our website: lqgroup.org.uk



L&Q achievements



A selection of other L&Q developments



L&Q at Huntley Wharf, Reading
lqhomes.com/huntleywharf



The Arbour, Chelmsford
lqhomes.com/beaulieuarbour



L&Q at Marleigh, Cambridge
lqhomes.com/marleigh

L&Q at Bankside Gardens

Flagstaff Road
Reading
RG2 6BW

@ banksidegardens@lqgroup.org.uk

📞 0333 242 2045

🌐 lqhomes.com/banksidegardens

Disclaimer

All information in this document is correct at the time of publication going to print July 2023. The contents of this brochure should not be considered material information for the purposes of purchasing a home. No image or photograph (whether computer generated or otherwise) is taken as a statement or representation of fact, and no image or photograph (whether computer generated or otherwise) forms part of any offer, contract, warranty or representation.

Registered office: L&Q, 29-35 West Ham Lane, Stratford, London E15 4PH. Homes & Communities Agency L4517. Registered Society 30441R Exempt charity. Details correct at the time of going to print July 2023. Your home is at risk if you fail to keep up repayments on a mortgage, rent or other loan secured on it. Please make sure you can afford the repayments before you take out a mortgage.