

BARKING RIVERSIDE

Wollstonecraft Mansions

Floor Plans and Specification
London Living Rent

L&Q



Computer generated image indicative only.

London Living Rent A place to be, become and belong

Barking Riverside – a landmark development for London along the banks of the River Thames. Barking Riverside is a joint venture between L&Q and The Mayor of London, and is one of Europe's largest brownfield developments. Covering an impressive 443 acres, alongside 2km of beautiful south-facing River Thames frontage.

The masterplan will deliver over 10,000 new homes, the new Barking Riverside Overground station and Thames Clipper service, as well as commercial, retail and leisure facilities. This pioneering project will incorporate Envac, one of Europe's largest automated waste disposal systems. New schools, parks and river walkways will all become home to an estimated 30,000 people at this former 1920's power station site.

L&Q have a collection of London Living Rent homes available at this award-winning development.

London Living Rent is the perfect stepping stone to buying a home through Shared Ownership - with the discounted rent allowing customers to save extra money each month to put towards a deposit. *

*Shared Ownership eligibility criteria will apply on your London Living Rent home, L&Q cannot guarantee you will meet future affordability requirements should you wish to buy a Shared Ownership home.

London Living Rent from L&Q

London Living Rent (LLR) is designed for people who are currently renting and want to get onto the property ladder but can't afford to do so yet – either through Shared Ownership or on the open market.

London Living Rent lets you:

- Rent a home at a discounted rate compared to renting privately
- Save faster towards a deposit to buy your own home
- Rent the home you want to buy
- Buy a share of your home through Shared Ownership with L&Q within 10 years*

Rent a brand-new and stylish home and you can benefit from:



Generously sized homes



Amenities and shops within walking distance



Excellent transport links close by

*Shared Ownership eligibility criteria will apply on your London Living Rent home, L&Q cannot guarantee you will meet future affordability requirements should you wish to buy a Shared Ownership home.



Image is representative of a typical L&Q showhome.

Specification

Kitchen



- Modern kitchen cabinets with a complementary worktop and matching upstand
- Full height glass splashback behind the hob
- Under cupboard lighting
- Stainless steel 1.5 bowl sink with accompanying chrome mixer tap
- Fully integrated appliances including oven, ceramic hob, fridge/freezer, dishwasher, and integrated extractor

Bathroom



- Modern white sanitaryware including semi-recessed basin with chrome basin tap
- Floor mounted WC with concealed cistern
- Chrome dual flush plate for water efficiency
- Fitted mirror
- Pressed steel bath with bespoke bath panel
- Chrome towel radiator
- Homes without an en suite will include a shower screen over the bath, chrome bath mixer tap, thermostatic shower valve with overhead shower and hair wash attachment
- Homes with an ensuite will include a shower screen over the bath, a bath mixer tap with hair wash attachment mounted at low level

En Suites



- Modern white sanitaryware including semi-recessed basin with chrome basin tap
- Floor mounted WC with concealed cistern
- Chrome dual flush plate
- Fitted mirror
- Chrome towel radiator
- White shower tray with fixed shower screen
- Thermostatic mixer valve with shower head and hair wash attachment

Bedrooms



- Fitted carpet
- Fitted wardrobe with sliding doors to bedroom 1

Wall & Floor Finishes



- White emulsion painted walls and ceilings to bedrooms and hallways
- White satin architraves and skirting boards
- Vinyl flooring to hallways and kitchen/living/dining areas
- Ceramic large format floor and wall tiles to bathrooms and en suites

Heating, Electrical & Lighting



- Underfloor heating to all apartments
- Low energy white LED downlights to kitchen/dining/living area and bathrooms and hallways
- Pendant lights to bedrooms, hallways and store cupboards
- Satin chrome switches and sockets
- Satin chrome shaver point in bathrooms
- Provision for Sky Q (subscription will be required)
- Mains operated ceiling mounted smoke/heat detector

General



- Free standing washer/dryer located in store/utility cupboard
- White ladder internal doors
- Brushed steel door furniture
- Private outdoor space to every home
- Fob secure access to communal gardens
- Video door entry system
- Cycle storage



Photography of showhome, indicative only.

Siteplan



Property Key

London Living Rent

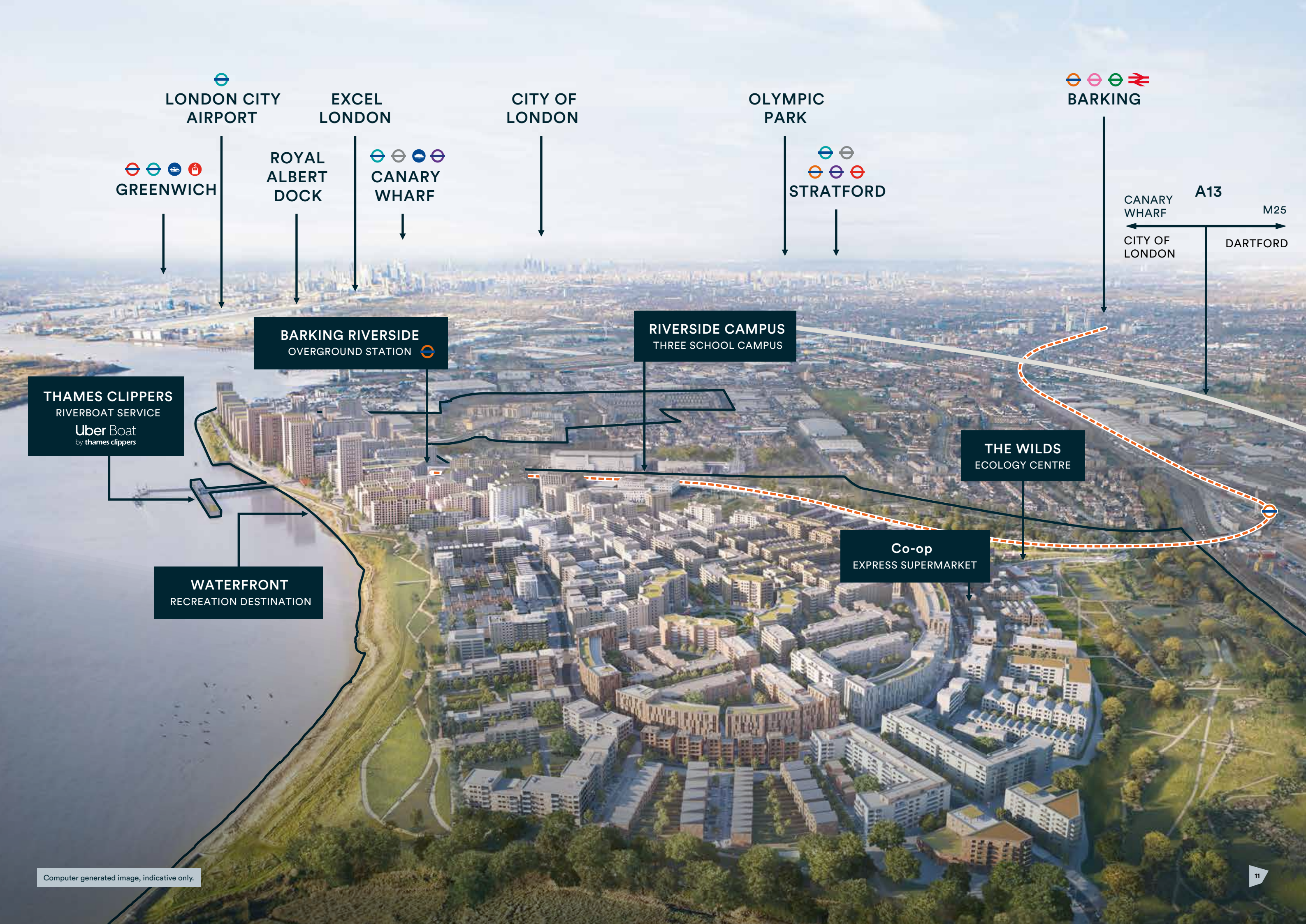
Shared Ownership

Private Rent

Affordable Rent

C/S Cycle Store

For further clarification regarding specific individual plots, please ask our Lettings Associates. Any depiction of the layout does not show details of gradients of land, boundary treatments, local authority street lighting or landscaping. It is our intention to build in accordance with this layout including the locations of Market Sale, Shared Ownership, London Living Rent, Private Rent and Affordable Rent properties (known as tenures). However, there may be occasions when the tenure location, house designs, boundaries, landscaping and positions of roads and footpaths, play areas and other facilities or amenities may change as the development proceeds and as properties are marketed. The layout (including tenure locations) is subject to amendments due to changing planning permission for the development, and depictions of the layout should be used as guidance only. No site map including tenure locations (whether computer generated or otherwise) forms part of any offer, contract, warranty, or representation and are for illustrative and guidance purposes only, quality of this technology may vary. In relation to computer generated images, [maximum/minimum] dimensions have been used to generate this image and as a result dimensions may vary (and should not be relied on by you).



LONDON CITY AIRPORT

EXCEL LONDON

CITY OF LONDON

OLYMPIC PARK

BARKING

GREENWICH

ROYAL ALBERT DOCK

CANARY WHARF

STRATFORD

CANARY WHARF

A13

M25

DARTFORD

BARKING RIVERSIDE OVERGROUND STATION

RIVERSIDE CAMPUS THREE SCHOOL CAMPUS

THE WILDS ECOLOGY CENTRE

Co-op EXPRESS SUPERMARKET

WATERFRONT RECREATION DESTINATION

THAMES CLIPPERS RIVERBOAT SERVICE
Uber Boat by thames clippers

Reach central London in 22 minutes*

The brand-new Barking Riverside Overground station is now open, connecting Barking to Gospel Oak London Overground route.

Offering regular trains, you'll be only 22 minutes from the centre of the capital. Fully step-free and accessible, the new station also has a secure bicycle store – making sustainable travel the right choice.

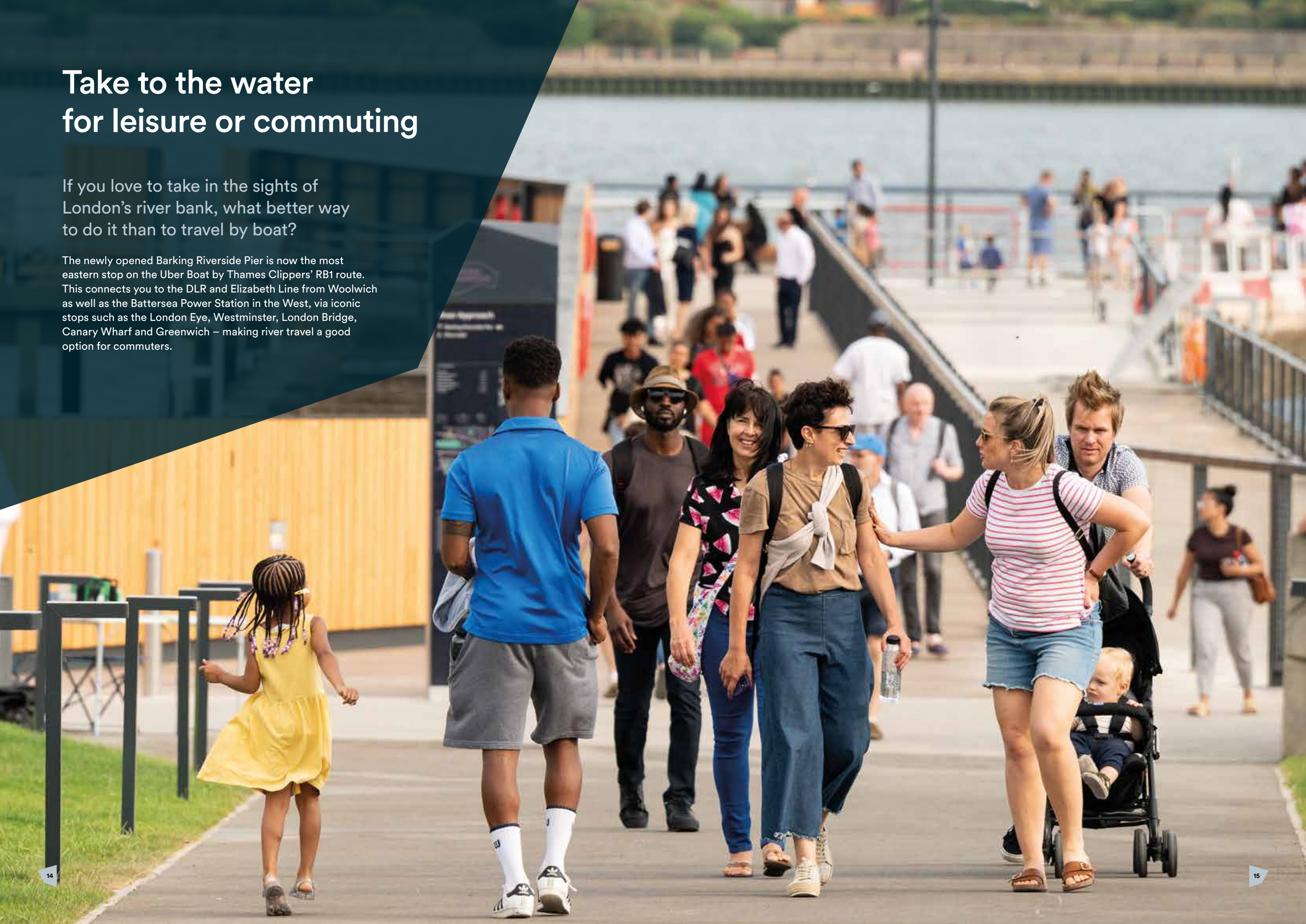
← Way out

BARKING RIVERSIDE

Take to the water for leisure or commuting

If you love to take in the sights of London's river bank, what better way to do it than to travel by boat?

The newly opened Barking Riverside Pier is now the most eastern stop on the Uber Boat by Thames Clippers' RB1 route. This connects you to the DLR and Elizabeth Line from Woolwich as well as the Battersea Power Station in the West, via iconic stops such as the London Eye, Westminster, London Bridge, Canary Wharf and Greenwich – making river travel a good option for commuters.



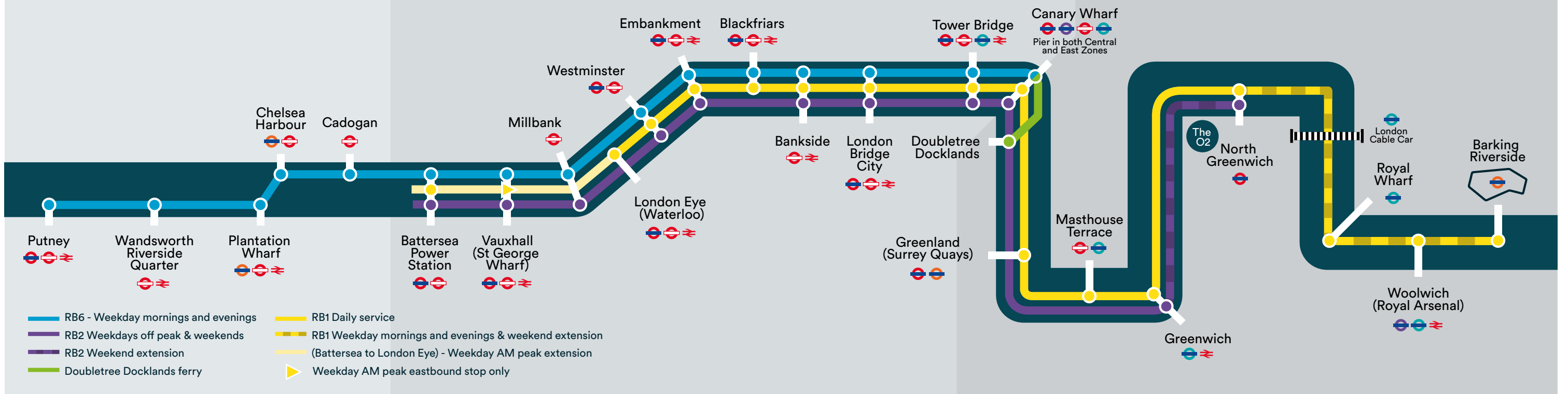


Uber Boat by Thames Clipper from Barking Riverside Pier

North Greenwich (The O2)	20 mins
Greenwich	28 mins
Canary Wharf	40 mins
London Bridge	55 mins

Travel across London by river

Uber Boat
by thames clippers





By train from Barking Riverside Overground station

Barking	7 mins
Stratford	14 mins
Canary Wharf	16 mins
Liverpool Street	25 mins



By train to the airport from Barking Riverside Overground station

London City	48 mins
Heathrow	1hr 43 mins
Gatwick	1hr 32 mins



By foot from Barking Riverside

Riverside School	4 mins
Barking Riverside Overground Station	10 mins
Barking Riverside Pier	13 mins



By cycle from Barking Riverside

Castle Green	10 mins
Parsloes Park	15 mins
Beam Parklands Country Park	18 mins
Stratford	41 mins

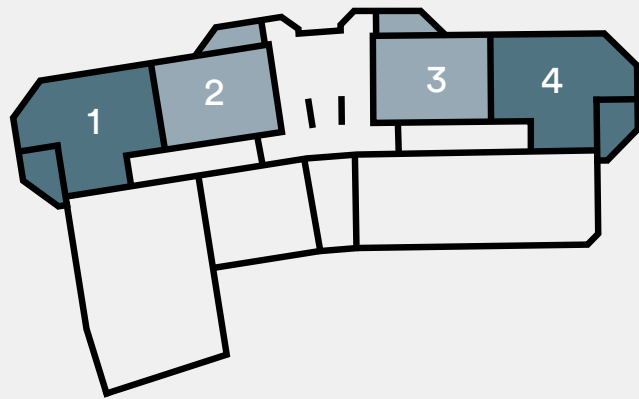
Train times taken from nationalrail.co.uk.
Distances taken from google.co.uk/maps.
Walking distances have been taken from current homes for rent.

Plot locator

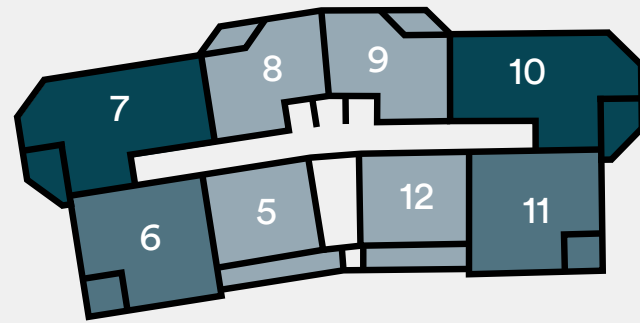
Wollstonecraft Mansions



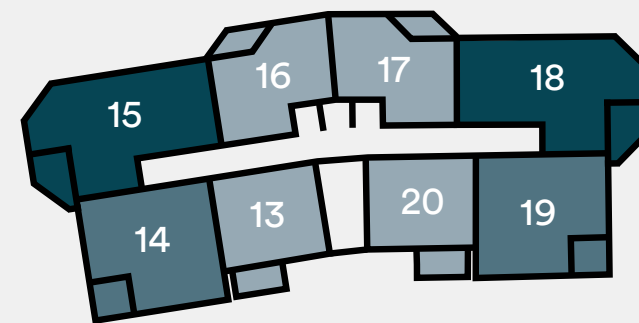
Ground Floor



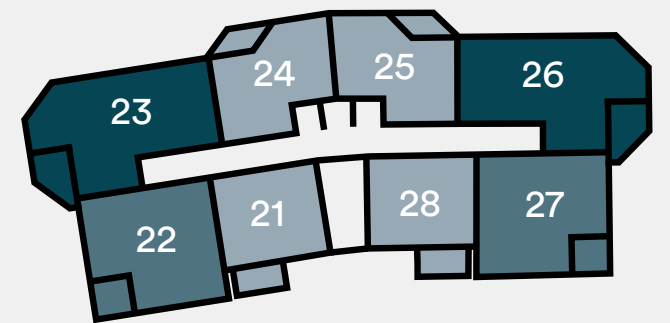
First Floor



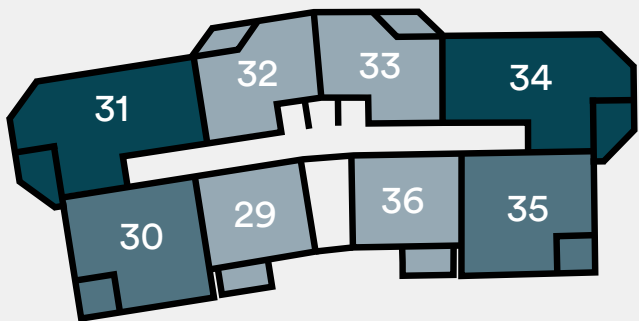
Second Floor



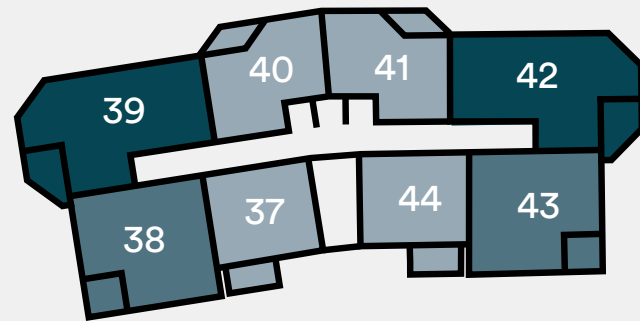
Third Floor



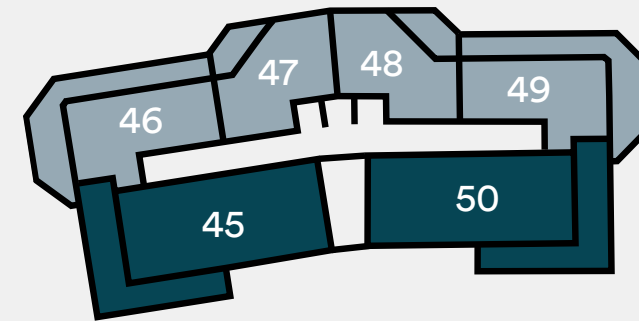
Fourth Floor



Fifth Floor



Sixth Floor



Key

- 1 bedroom homes
- 2 bedroom homes
- 3 bedroom homes

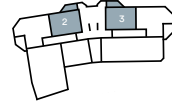
Plot locator represents Wollstonecraft Mansions. The floorplans provided are intended to only give a general indication of the proposed floor layout, are not drawn to scale and are not intended to form part of any offer, contract, warranty or representation. Measurements are given to the widest point, are approximate and are given as a guide only. They must not be relied upon as a statement or representation of fact. Do not use these measurements for carpet sizes, appliance spaces or items of furniture. Kitchen, bathroom and utility layouts may differ to build, and specific plot sizes and layouts may vary within the same unit type. For further clarification regarding specific individual plots, please ask our Lettings Associates.

One bedroom apartments Type A

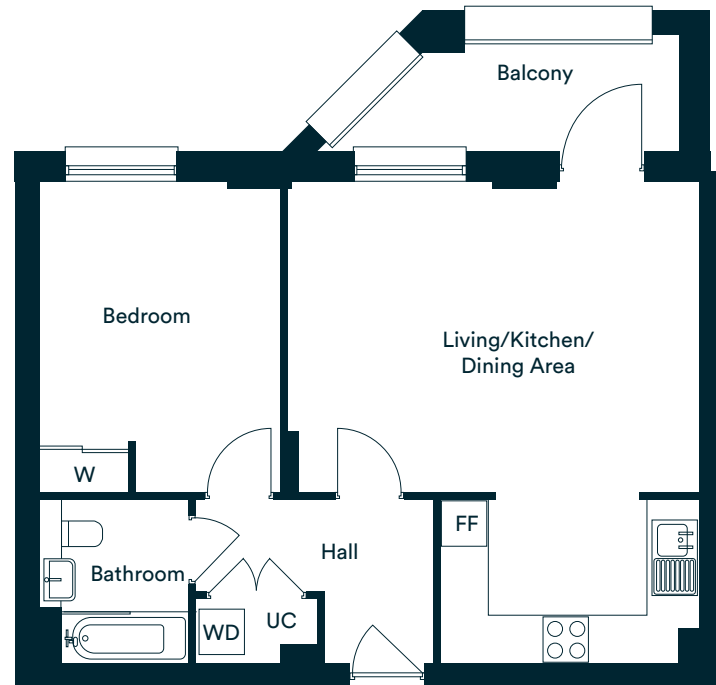
Plots 2 & 3*



Wollstonecraft
Mansions



Ground Floor
Plots 2 & 3



Accommodation

Living/Kitchen/Dining Area	6.36m x 5.44m	20'10" x 17'10"
Bedroom	4.10m x 3.21m	13'5" x 10'6"
Total internal area	55.4 sq. m.	596.5 sq. ft.
Balcony	1.40m x 3.84m	4'7" x 12'7"

Floor	Plot No.	Postal No.
0	2	2 Wollstonecraft Mansions
0	3	3 Wollstonecraft Mansions

W – Wardrobe UC – Utility Cupboard FF – Fridge/Freezer WD – Washer/Dryer

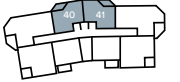
*Denotes apartments that are opposite handed/mirror image to the plans drawn. Garden sizes vary between plots, check the site plan and garden sizes for clarification. The floor plans provided are intended to only give a general indication of the proposed floor layout, are not drawn to scale and are not intended to form part of any offer, contract, warranty or representation. Measurements are given to the widest point, are approximate and are given as a guide only. They must not be relied upon as a statement or representation of fact. Do not use these measurements for carpet sizes, appliance spaces or items of furniture. Kitchen, bathroom and utility layouts may differ to build, and specific plot sizes and layouts may vary within the same unit type. Window sizes may vary. Positions are indicative only and positions may vary. For further clarification regarding specific individual plots, please ask our Lettings Associates.

Type B

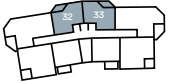
Plots 8, 9*, 16, 17*, 24, 25*, 32, 33*, 40 & 41*



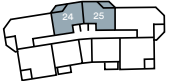
Wollstonecraft
Mansions



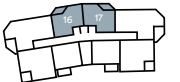
Fifth Floor
Plots 40 & 41



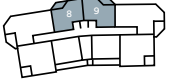
Fourth Floor
Plots 32 & 33



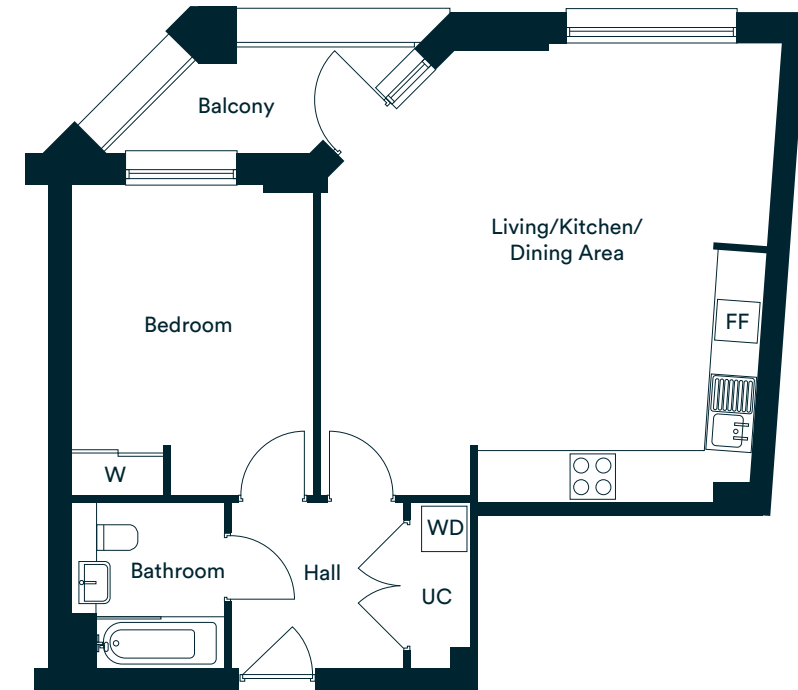
Third Floor
Plots 24 & 25



Second Floor
Plots 16 & 17



First Floor
Plots 8 & 9



Accommodation

Living/Kitchen/Dining Area	6.05m x 5.85m	19'10" x 19'23"
Bedroom	4.01m x 3.18m	13'5" x 10'5"
Total internal area	59.6 sq. m.	641.1 sq. ft.
Balcony	1.41m x 2.74m	4'7" x 8'11"

W – Wardrobe UC – Utility Cupboard FF – Fridge/Freezer WD – Washer/Dryer

*Denotes apartments that are opposite handed/mirror image to the plans drawn. Garden sizes vary between plots, check the site plan and garden sizes for clarification. The floor plans provided are intended to only give a general indication of the proposed floor layout, are not drawn to scale and are not intended to form part of any offer, contract, warranty or representation. Measurements are given to the widest point, are approximate and are given as a guide only. They must not be relied upon as a statement or representation of fact. Do not use these measurements for carpet sizes, appliance spaces or items of furniture. Kitchen, bathroom and utility layouts may differ to build, and specific plot sizes and layouts may vary within the same unit type. Window sizes may vary. Positions are indicative only and positions may vary. For further clarification regarding specific individual plots, please ask our Lettings Associates.

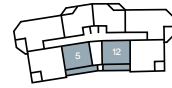
Floor	Plot No.	Postal No.
1	8	8 Wollstonecraft Mansions
1	9	9 Wollstonecraft Mansions
2	16	16 Wollstonecraft Mansions
2	17	17 Wollstonecraft Mansions
3	24	24 Wollstonecraft Mansions
3	25	25 Wollstonecraft Mansions
4	32	32 Wollstonecraft Mansions
4	33	33 Wollstonecraft Mansions
5	40	40 Wollstonecraft Mansions
5	41	41 Wollstonecraft Mansions

Type C

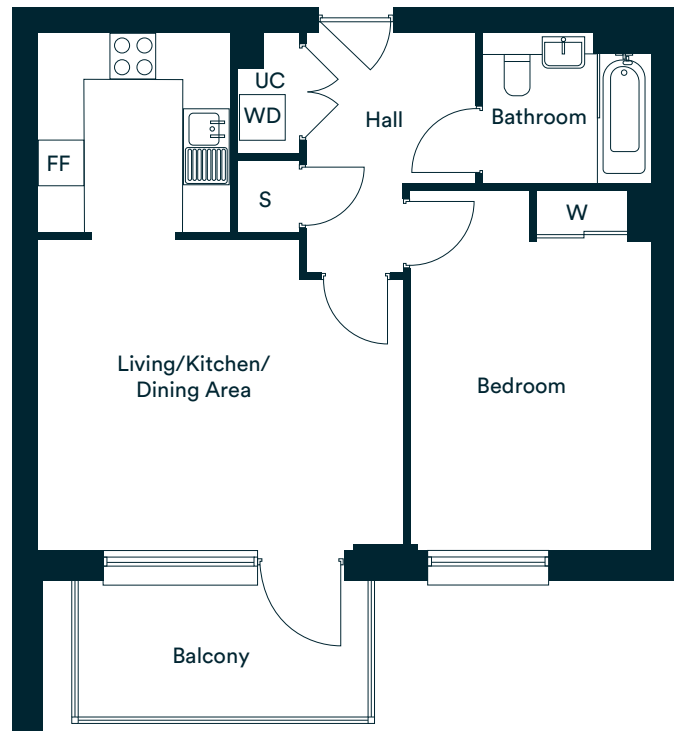
Plots 5 & 12*



Wollstonecraft Mansions



First Floor
Plots 5 & 12



Accommodation

Living/Kitchen/Dining Area	6.81m x 4.83m	22'4" x 15'10"
Bedroom	4.70m x 3.15m	15'5" x 10'4"
Total internal area	55.1 sq. m.	593.3 sq. ft.
Balcony	1.84m x 3.82m	6'0" x 12'6"

Floor	Plot No.	Postal No.
1	5	5 Wollstonecraft Mansions
1	12	12 Wollstonecraft Mansions

W – Wardrobe UC – Utility Cupboard FF – Fridge/Freezer WD – Washer/Dryer S – Storage

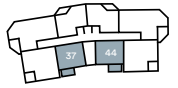
*Denotes apartments that are opposite handed/mirror image to the plans drawn. Garden sizes vary between plots, check the site plan and garden sizes for clarification. The floor plans provided are intended to only give a general indication of the proposed floor layout, are not drawn to scale and are not intended to form part of any offer, contract, warranty or representation. Measurements are given to the widest point, are approximate and are given as a guide only. They must not be relied upon as a statement or representation of fact. Do not use these measurements for carpet sizes, appliance spaces or items of furniture. Kitchen, bathroom and utility layouts may differ to build, and specific plot sizes and layouts may vary within the same unit type. Window sizes may vary. Positions are indicative only and positions may vary. For further clarification regarding specific individual plots, please ask our Lettings Associates.

Type D

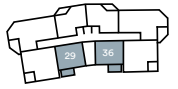
Plots 13, 20*, 21, 28*, 29, 36*, 37 & 44*



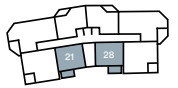
Wollstonecraft Mansions



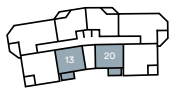
Fifth Floor
Plots 37 & 44



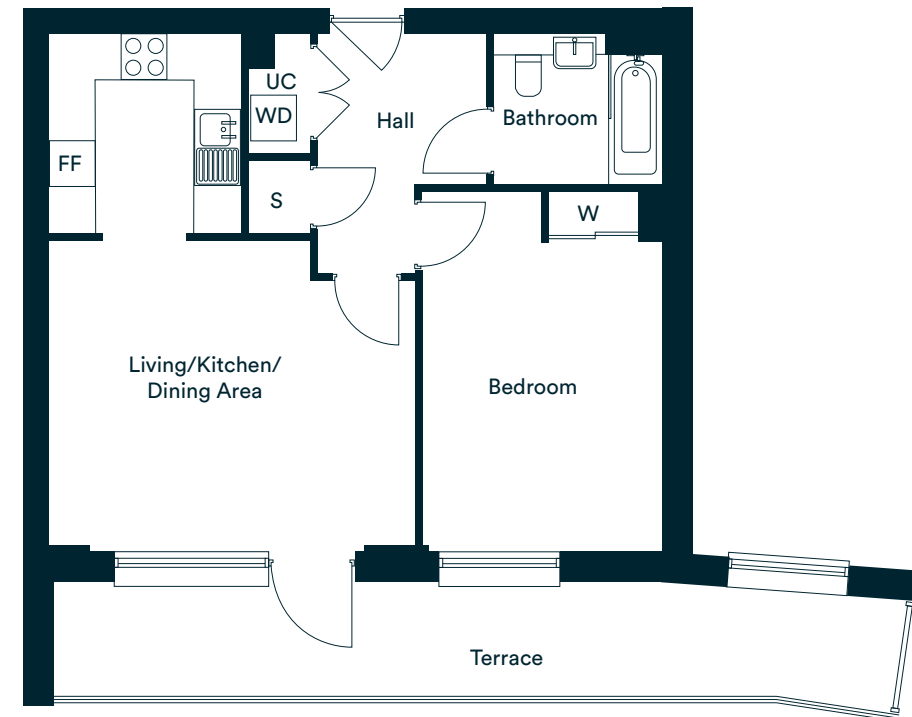
Fourth Floor
Plots 29 & 36



Third Floor
Plots 21 & 28



Second Floor
Plots 13 & 20



Accommodation

Living/Kitchen/Dining Area	6.81m x 4.83m	22'4" x 15'10"
Bedroom	4.70m x 3.15m	15'5" x 10'4"
Total internal area	55.1 sq. m.	593.3 sq. ft.
Terrace	1.45m x 11.10m	4'9" x 36'5"

Floor	Plot No.	Postal No.
2	13	13 Wollstonecraft Mansions
2	20	20 Wollstonecraft Mansions
3	21	21 Wollstonecraft Mansions
3	28	28 Wollstonecraft Mansions
4	29	29 Wollstonecraft Mansions
4	36	36 Wollstonecraft Mansions
5	37	37 Wollstonecraft Mansions
5	44	44 Wollstonecraft Mansions

W – Wardrobe UC – Utility Cupboard FF – Fridge/Freezer WD – Washer/Dryer S – Storage

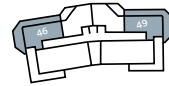
*Denotes apartments that are opposite handed/mirror image to the plans drawn. Garden sizes vary between plots, check the site plan and garden sizes for clarification. The floor plans provided are intended to only give a general indication of the proposed floor layout, are not drawn to scale and are not intended to form part of any offer, contract, warranty or representation. Measurements are given to the widest point, are approximate and are given as a guide only. They must not be relied upon as a statement or representation of fact. Do not use these measurements for carpet sizes, appliance spaces or items of furniture. Kitchen, bathroom and utility layouts may differ to build, and specific plot sizes and layouts may vary within the same unit type. Window sizes may vary. Positions are indicative only and positions may vary. For further clarification regarding specific individual plots, please ask our Lettings Associates.

Type E

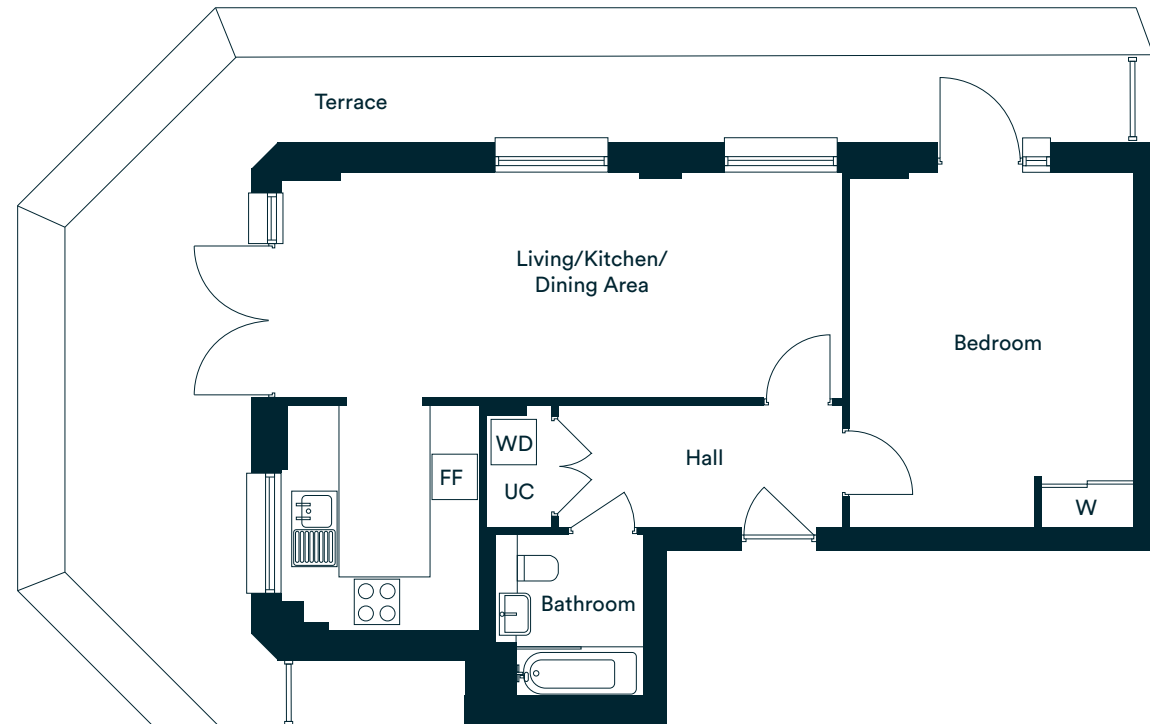
Plots 46 & 49*



Wollstonecraft
Mansions



Sixth Floor
Plots 46 & 49



Accommodation

Living/Kitchen/Dining Area	6.04m x 7.41m	19'10" x 24'4"
Bedroom	4.68m x 3.74m	15'4" x 12'3"
Total internal area	60.8 sq. m.	654.1 sq. ft.
Terrace	8.95m x 1.24m	29'4" x 4'08"

Floor	Plot No.	Postal No.
6	46	46 Wollstonecraft Mansions
6	49	49 Wollstonecraft Mansions

W – Wardrobe UC – Utility Cupboard FF – Fridge/Freezer WD – Washer/Dryer

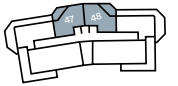
*Denotes apartments that are opposite handed/mirror image to the plans drawn. Garden sizes vary between plots, check the site plan and garden sizes for clarification. The floor plans provided are intended to only give a general indication of the proposed floor layout, are not drawn to scale and are not intended to form part of any offer, contract, warranty or representation. Measurements are given to the widest point, are approximate and are given as a guide only. They must not be relied upon as a statement or representation of fact. Do not use these measurements for carpet sizes, appliance spaces or items of furniture. Kitchen, bathroom and utility layouts may differ to build, and specific plot sizes and layouts may vary within the same unit type. Window sizes may vary. Positions are indicative only and positions may vary. For further clarification regarding specific individual plots, please ask our Lettings Associates.

Type F

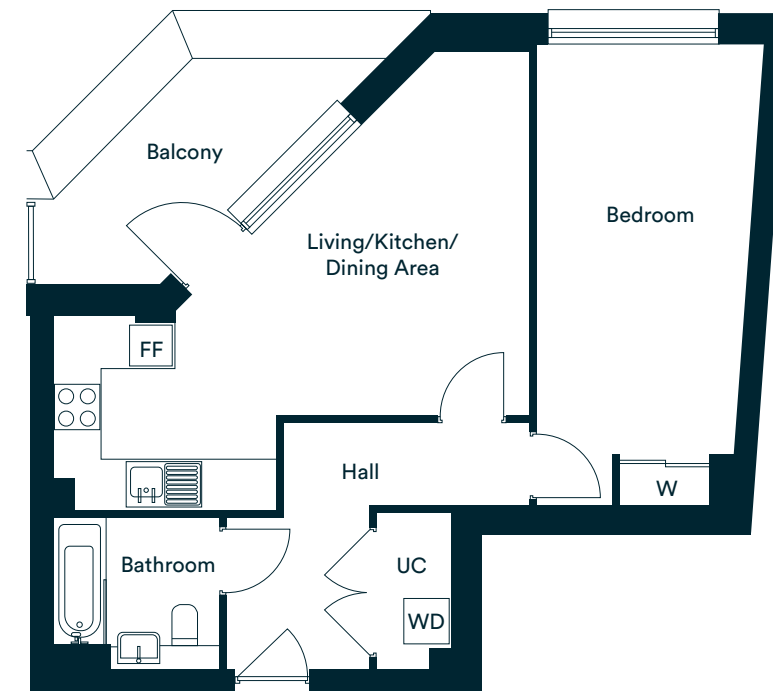
Plots 47 & 48*



Wollstonecraft
Mansions



Sixth Floor
Plots 47 & 48



Accommodation

Living/Kitchen/Dining Area	4.81m x 6.27m	15'9" x 20'7"
Bedroom	6.09m x 2.80m	19'11" x 9'2"
Total internal area	53.8 sq. m.	596.1 sq. ft.
Balcony	2.44m x 2.46m	8'0" x 8'08"

Floor	Plot No.	Postal No.
6	47	47 Wollstonecraft Mansions
6	48	48 Wollstonecraft Mansions

W – Wardrobe UC – Utility Cupboard FF – Fridge/Freezer WD – Washer/Dryer

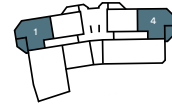
*Denotes apartments that are opposite handed/mirror image to the plans drawn. Garden sizes vary between plots, check the site plan and garden sizes for clarification. The floor plans provided are intended to only give a general indication of the proposed floor layout, are not drawn to scale and are not intended to form part of any offer, contract, warranty or representation. Measurements are given to the widest point, are approximate and are given as a guide only. They must not be relied upon as a statement or representation of fact. Do not use these measurements for carpet sizes, appliance spaces or items of furniture. Kitchen, bathroom and utility layouts may differ to build, and specific plot sizes and layouts may vary within the same unit type. Window sizes may vary. Positions are indicative only and positions may vary. For further clarification regarding specific individual plots, please ask our Lettings Associates.

Two bedroom apartments Type G

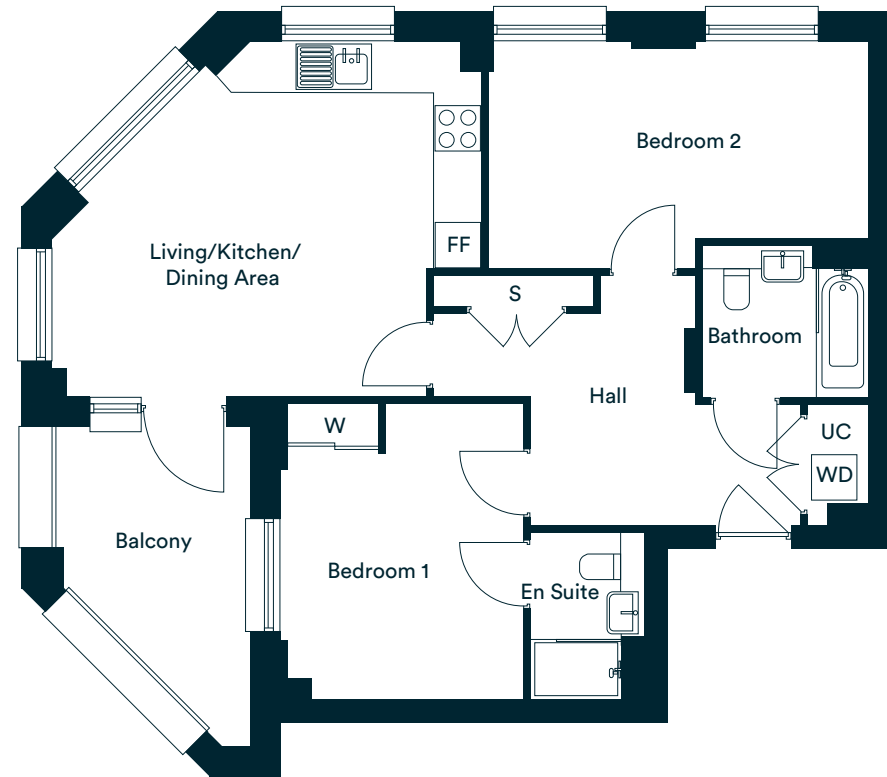
Plots 1 & 4*



Wollstonecraft
Mansions



Ground Floor
Plots 1 & 4



Accommodation

Living/Kitchen/Dining Area	4.70m x 5.70m	15'5" x 18'4"
Bedroom 1	3.91m x 3.19m	12'9" x 10'5"
Bedroom 2	3.07m x 5.02m	10'0" x 16'5"
Total internal area	72.3 sq. m.	778.2 sq. ft.
Balcony	4.28m x 2.59m	14'0" x 8'5"

Floor	Plot No.	Postal No.
0	1	1 Wollstonecraft Mansions
0	4	4 Wollstonecraft Mansions

W – Wardrobe UC – Utility Cupboard FF – Fridge/Freezer WD – Washer/Dryer S – Storage

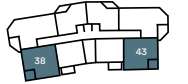
*Denotes apartments that are opposite handed/mirror image to the plans drawn. Garden sizes vary between plots, check the site plan and garden sizes for clarification. The floor plans provided are intended to only give a general indication of the proposed floor layout, are not drawn to scale and are not intended to form part of any offer, contract, warranty or representation. Measurements are given to the widest point, are approximate and are given as a guide only. They must not be relied upon as a statement or representation of fact. Do not use these measurements for carpet sizes, appliance spaces or items of furniture. Kitchen, bathroom and utility layouts may differ to build, and specific plot sizes and layouts may vary within the same unit type. Window sizes may vary. Positions are indicative only and positions may vary. For further clarification regarding specific individual plots, please ask our Lettings Associates.

Type H

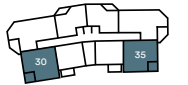
Plots 6, 11*, 14, 19*, 22, 27*, 30, 35*, 38 & 43*



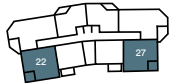
Wollstonecraft
Mansions



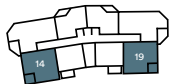
Fifth Floor
Plots 38 & 43



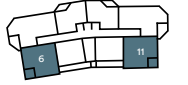
Fourth Floor
Plots 30 & 35



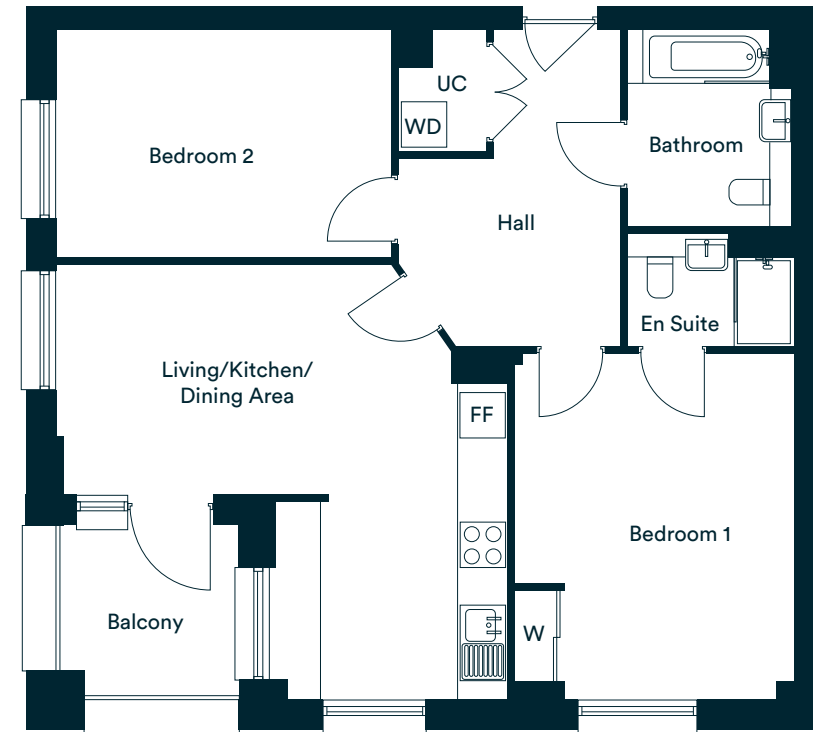
Third Floor
Plots 22 & 27



Second Floor
Plots 14 & 19



First Floor
Plots 6 & 11



Accommodation

Living/Kitchen/Dining Area	5.74m x 5.96m	18'9" x 19'6"
Bedroom 1	4.57m x 3.70m	14'11" x 12'2"
Bedroom 2	3.00m x 4.42m	9'10" x 14'6"
Total internal area	78.7 sq. m.	847.5 sq. ft.
Balcony	2.24m x 2.34m	7'4" x 7'8"

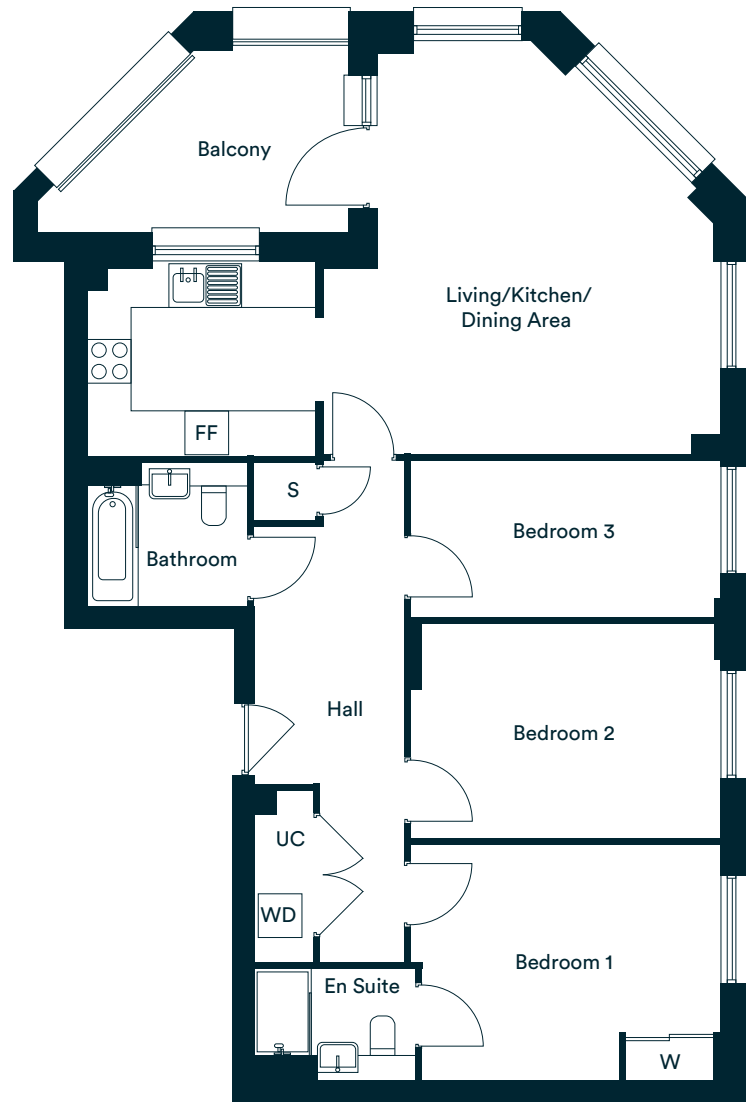
Floor	Plot No.	Postal No.
1	6	6 Wollstonecraft Mansions
1	11	11 Wollstonecraft Mansions
2	14	14 Wollstonecraft Mansions
2	19	19 Wollstonecraft Mansions
3	22	22 Wollstonecraft Mansions
3	27	27 Wollstonecraft Mansions
4	30	30 Wollstonecraft Mansions
4	35	35 Wollstonecraft Mansions
5	38	38 Wollstonecraft Mansions
5	43	43 Wollstonecraft Mansions

W – Wardrobe UC – Utility Cupboard FF – Fridge/Freezer WD – Washer/Dryer

*Denotes apartments that are opposite handed/mirror image to the plans drawn. Garden sizes vary between plots, check the site plan and garden sizes for clarification. The floor plans provided are intended to only give a general indication of the proposed floor layout, are not drawn to scale and are not intended to form part of any offer, contract, warranty or representation. Measurements are given to the widest point, are approximate and are given as a guide only. They must not be relied upon as a statement or representation of fact. Do not use these measurements for carpet sizes, appliance spaces or items of furniture. Kitchen, bathroom and utility layouts may differ to build, and specific plot sizes and layouts may vary within the same unit type. Window sizes may vary. Positions are indicative only and positions may vary. For further clarification regarding specific individual plots, please ask our Lettings Associates.

Three bedroom apartments Type I

Plots 7, 10*, 15, 18*, 23, 26*, 31, 34*, 39 & 42*



Accommodation

Living/Kitchen/Dining Area	8.68m x 5.68m	28'6" x 18'7"
Bedroom 1	4.23m x 3.23m	13'10" x 10'7"
Bedroom 2	4.23m x 2.94m	13'10" x 9'8"
Bedroom 3	4.25m x 2.15m	13'11" x 7'0"
Total internal area	95.2 sq. m.	1019.0 sq. ft.
Balcony	4.28m x 2.58m	14'05" x 8'6"

W – Wardrobe UC – Utility Cupboard FF – Fridge/Freezer WD – Washer/Dryer S – Storage

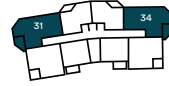
*Denotes apartments that are opposite handed/mirror image to the plans drawn. Garden sizes vary between plots, check the site plan and garden sizes for clarification. The floor plans provided are intended to only give a general indication of the proposed floor layout, are not drawn to scale and are not intended to form part of any offer, contract, warranty or representation. Measurements are given to the widest point, are approximate and are given as a guide only. They must not be relied upon as a statement or representation of fact. Do not use these measurements for carpet sizes, appliance spaces or items of furniture. Kitchen, bathroom and utility layouts may differ to build, and specific plot sizes and layouts may vary within the same unit type. Window sizes may vary. Positions are indicative only and positions may vary. For further clarification regarding specific individual plots, please ask our Lettings Associates.



Wollstonecraft
Mansions



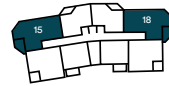
Fifth Floor
Plots 39 & 42



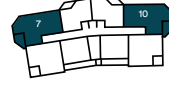
Fourth Floor
Plots 31 & 34



Third Floor
Plots 23 & 26



Second Floor
Plots 15 & 18

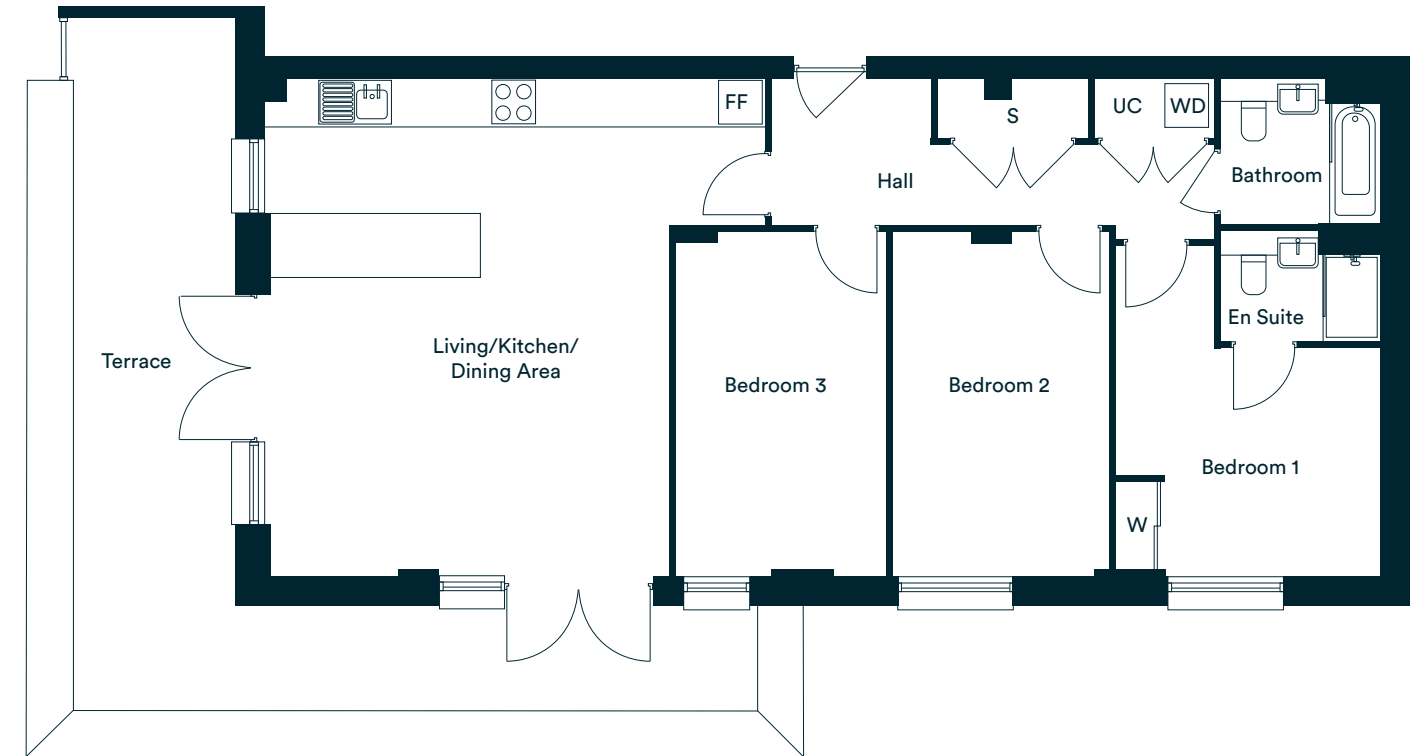


First Floor
Plots 7 & 10

Floor	Plot No.	Postal No.
1	7	7 Wollstonecraft Mansions
1	10	10 Wollstonecraft Mansions
2	15	15 Wollstonecraft Mansions
2	18	18 Wollstonecraft Mansions
3	23	23 Wollstonecraft Mansions
3	26	26 Wollstonecraft Mansions
4	31	31 Wollstonecraft Mansions
4	34	34 Wollstonecraft Mansions
5	39	39 Wollstonecraft Mansions
5	42	42 Wollstonecraft Mansions

Type J

Plots 45 & 50*



Accommodation

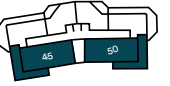
Living/Kitchen/Dining Area	6.78m x 5.47m	22'3" x 17'11"
Bedroom 1	4.53m x 3.63m	14'10" x 11'10"
Bedroom 2	4.73m x 2.97m	15'6" x 9'9"
Bedroom 3	4.73m x 2.88m	15'6" x 9'5"
Total internal area	104.6 sq. m.	1125.6 sq. ft.
Terrace	9.51m x 9.40m	31'2" x 30'10"

W – Wardrobe UC – Utility Cupboard FF – Fridge/Freezer WD – Washer/Dryer S – Storage

*Denotes apartments that are opposite handed/mirror image to the plans drawn. Garden sizes vary between plots, check the site plan and garden sizes for clarification. The floor plans provided are intended to only give a general indication of the proposed floor layout, are not drawn to scale and are not intended to form part of any offer, contract, warranty or representation. Measurements are given to the widest point, are approximate and are given as a guide only. They must not be relied upon as a statement or representation of fact. Do not use these measurements for carpet sizes, appliance spaces or items of furniture. Kitchen, bathroom and utility layouts may differ to build, and specific plot sizes and layouts may vary within the same unit type. Window sizes may vary. Positions are indicative only and positions may vary. For further clarification regarding specific individual plots, please ask our Lettings Associates.



Wollstonecraft
Mansions



Sixth Floor
Plots 45 & 50

Floor	Plot No.	Postal No.
6	45	45 Wollstonecraft Mansions
6	50	50 Wollstonecraft Mansions



Photography of showhome, indicative only.

L&Q's portfolio of homes to rent

If you choose to rent, you want the pick of rental properties so you can find the one that best fits your needs, your lifestyle and your budget.

As one of London's most experienced landlords, L&Q understands what renters want and don't believe you should compromise any element of your new rental home, quality or service.

That is why we are creating the UK's widest choice of new purpose-built and newly refurbished homes to rent across London and the South East.

Based on our 60 years' experience, L&Q has streamlined the lettings process for our tenants to ensure a responsive and comprehensive letting service.

We offer our tenants the right locations, good value and great transport connections. All our brand new or newly refurbished apartments are well appointed, and everyone is backed by a dedicated property manager, which means support is only ever a phone call away.

As a long-term investor in housing, L&Q wants to simplify the process to give you more time and energy to focus on what's important to you. We offer you the peace of mind that the standard you expect is what you receive when you rent with us.

What you can expect when you choose to rent from L&Q



Excellent transport connections for easy commuting



The right locations in established neighbourhoods



No hidden costs, and good value for money



New purpose-built or newly refurbished accommodation



Well-appointed homes



Dedicated property manager on the end of a phone



Comprehensive letting service from an experienced, responsible and reliable landlord

Move into your LLR home in 10 easy steps:



*Note LLR is a stepping stone for those who are currently unable to purchase a home via Shared Ownership or through the open market and wish to transition from renting to homeownership.

^Please note L&Q are unable to confirm tenancy start dates prior to this stage.



Barking Riverside



lqhomes.com/LLR



0208 189 7546



llrbarkingriverside@lqgroup.org.uk

Disclaimer

All information in this document is correct at the time of going to print. Computer generated images are for illustrative purposes only and dimensions are not intended to form part of any contract or warranty. Furniture and landscaping are shown for illustrative purposes only. Individual features such as windows, brick, materials and colours as may heating and electrical layouts. We aim to build according to the layout, but occasionally we do have to change property designs, boundaries, landscaping and the other positions of roads, footpaths, street lighting and other features as the development proceeds. All services and facilities may not be available on completion of the property. For further clarification please ask our Lettings Associates.

Registered office: L&Q, 29-35 West Ham Lane, Stratford, London E15 4PH. Homes & Communities Agency L4517. Registered Society 30441R Exempt charity.