

BARKING RIVERSIDE

Fielders Quarter

Floor Plans and Specification
Shared Ownership

Chambers Apartments,
Norris Apartments, Frost House,
Collett Mansions and Leonard House

L&Q



Computer generated image.

A place to be, become and belong

Overlooking London's iconic River Thames, Barking Riverside is founded on an ambitious vision for what placemaking can achieve. One of the most exciting new developments in Europe, the project will help transform a 443-acre former industrial site into a new London district that everyone can be proud of.

Co-created in close partnership with residents, the area is growing to become an exciting and vibrant neighbourhood of over 10,000 homes, commercial and leisure space, new schools and facilities, public open spaces and riverside walks. Connectivity has already been enhanced by the recently extended London Overground station and the new Uber Boat by Thames Clippers pier service.

The project is being delivered by master developers Barking Riverside Limited (BRL), a joint venture between L&Q and the Mayor of London. BRL are partnering with the community, stakeholders, plot developers and a range of experts and professionals to help create a place that is 'Barking Made', with pride and purpose for everyone.

Specification

Kitchen



- Modern kitchen cabinets with a complementary worktop and matching upstand
- Full height stainless steel splashback behind the hob
- Under cupboard lighting
- Stainless steel 1.5 bowl sink with accompanying chrome mixer tap
- Fully integrated appliances including oven, ceramic induction hob, fridge/freezer, dishwasher, and integrated extractor

Bathroom



- Modern white sanitaryware including semi-recessed basin with chrome basin tap
- Floor mounted WC with concealed cistern
- Chrome dual flush plate for water efficiency
- Full height mirror
- Pressed steel bath with bespoke bath panel
- Chrome towel radiator
- Homes without an en suite will include a hinged shower screen over the bath, chrome bath mixer tap, thermostatic shower valve with overhead shower and hair wash attachment
- Homes with an en suite will include a bath mixer tap with hair wash attachment mounted at low level

En Suites



- Modern white sanitaryware including semi-recessed basin with chrome basin tap
- Floor mounted WC with concealed cistern
- Chrome dual flush plate
- Fitted mirror
- Chrome towel radiator
- White shower tray with fixed shower screen
- Thermostatic mixer valve with shower head and hair wash attachment

Bedrooms



- Fitted carpet
- Fitted wardrobe with sliding doors to bedroom 1

Wall & Floor Finishes



- White emulsion painted walls and ceilings to bedrooms and hallways
- White satin architraves and skirting boards
- Carpet flooring to bedrooms. Laminate Floor to Hall and kitchen/living/dining areas
- Ceramic large format floor and wall tiles to bathrooms and en suites

Heating, Electrical & Lighting



- Low energy white LED downlights to kitchen/dining/living area and bathrooms and hallways
- Pendant lights to bedrooms, hallways and store cupboards
- Satin chrome switches and sockets
- Satin chrome shaver point in bathrooms
- Provision for Sky Q (subscription will be required)
- Mains operated ceiling mounted smoke/heat detector

General



- Free standing washer/dryer located in store/utility cupboard
- White ladder internal doors
- Brushed steel door furniture
- Private garden, balcony, or terrace to every home
- Fob secure access to communal gardens
- Video door entry system
- Cycle storage
- NHBC 12-year Warranty
- Secure car parking (available at separate negotiation to selected plots)



Photography of showhome, indicative only.

Site Plan



Property Key

	Shared Ownership
	Market Sale
	Affordable Rent
C/S	Cycle Store
P/L	Parcel Locker

Please note that the properties are currently under construction. For further clarification regarding specific individual plots, please ask our Sales Associates. Any depiction of the layout does not show details of gradients of land, boundary treatments, local authority street lighting or landscaping. It is our intention to build in accordance with this layout including the locations of Market Sale, Shared Ownership, London Living Rent, Private Rent and Affordable Rent properties (known as tenures). However, there may be occasions when the tenure location, house designs, boundaries, landscaping and positions of roads and footpaths, play areas and other facilities or amenities may change as the development proceeds and as properties are marketed. The layout (including tenure locations) is subject to amendments due to changing planning permission for the development, and depictions of the layout should be used as guidance only. No site map including tenure locations (whether computer generated or otherwise) forms part of any offer, contract, warranty, or representation and are for illustrative and guidance purposes only, quality of this technology may vary. In relation to computer generated images, minimum dimensions have been used to generate this image and as a result dimensions may vary (and should not be relied on by you).

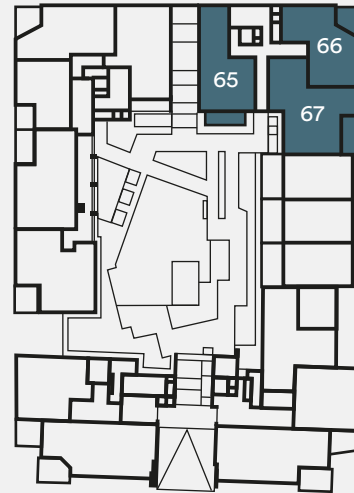
Plot locator Chambers Apartments



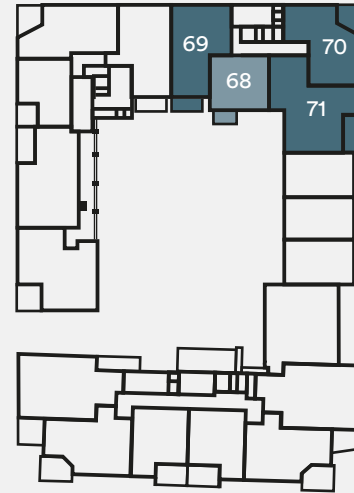
Lower Ground Floor



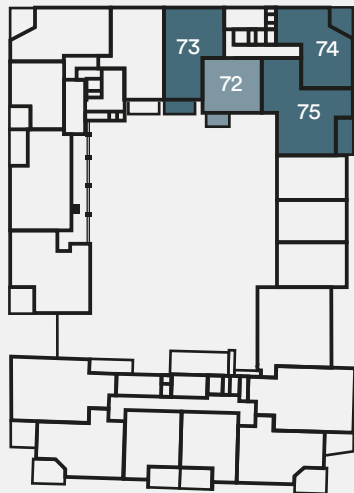
Ground Floor



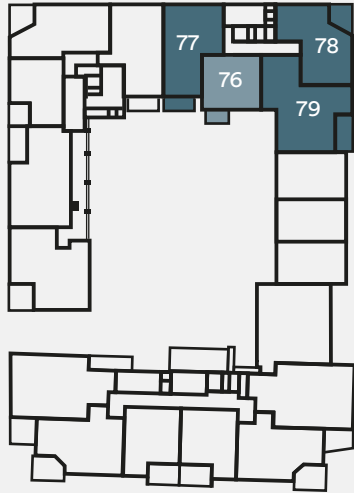
First Floor



Second Floor



Third Floor



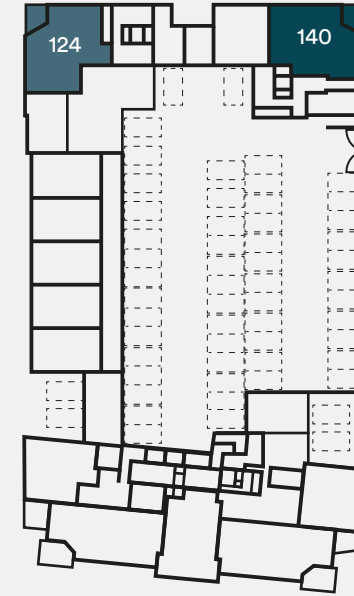
Key

- 1 bedroom homes
- 2 bedroom homes

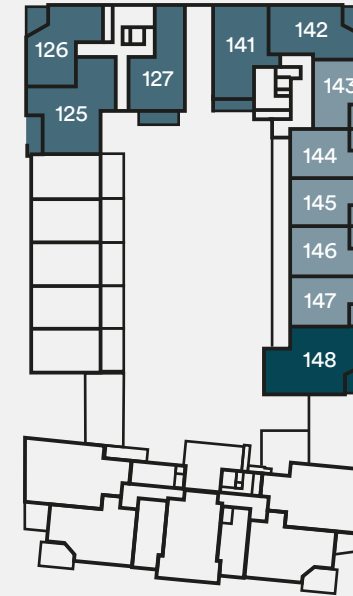
Plot locator Norris Apartments & Frost House



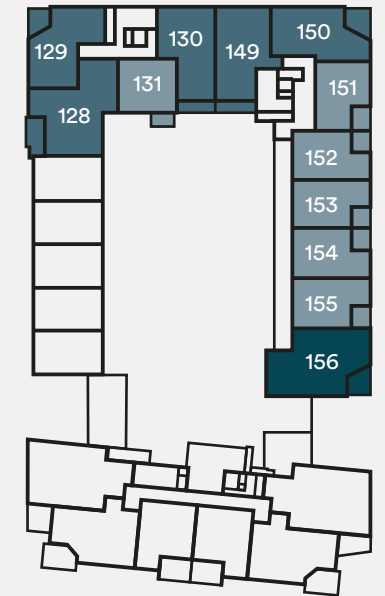
Lower Ground Floor



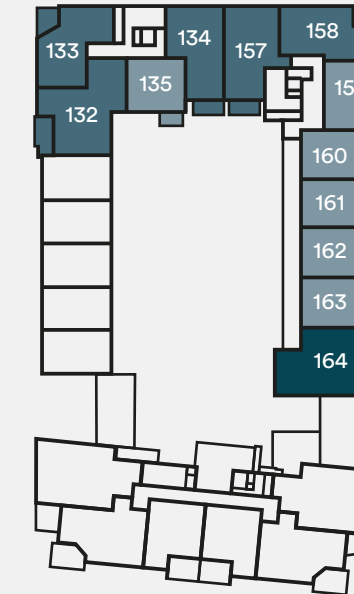
Ground Floor



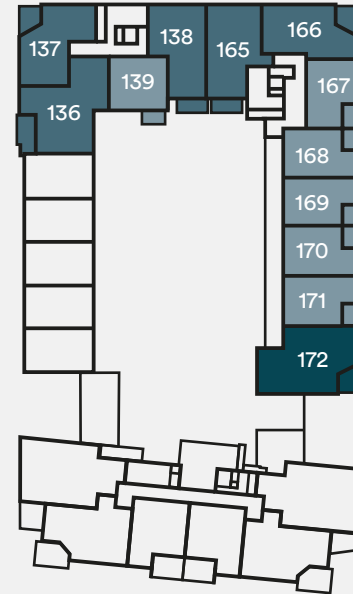
First Floor



Second Floor



Third Floor



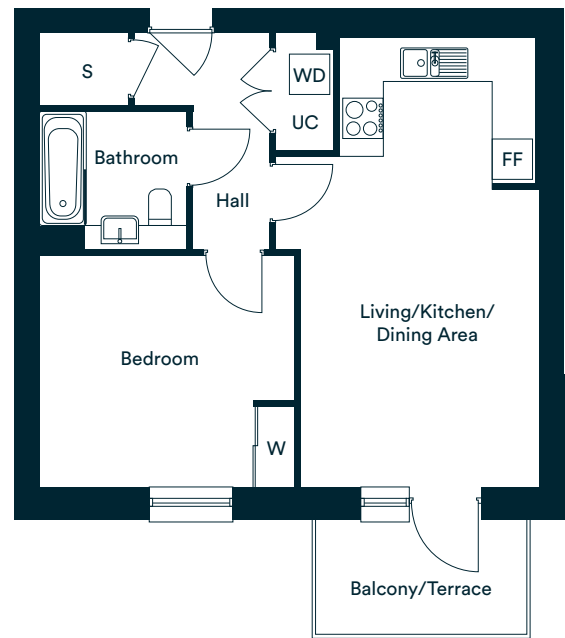
Key

- 1 bedroom homes
- 2 bedroom homes
- 3 bedroom homes

The floorplans provided are intended to only give a general indication of the proposed floor layout, are not drawn to scale and are not intended to form part of any offer, contract, warranty or representation. Measurements are given to the widest point, are approximate and are given as a guide only. They must not be relied upon as a statement or representation of fact. Do not use these measurements for carpet sizes, appliance spaces or items of furniture. Kitchen, bathroom and utility layouts may differ to build, and specific plot sizes and layouts may vary within the same unit type. For further clarification regarding specific individual plots, please ask our Sales Associates.

One bedroom homes The Moore

Plots 68*, 72*, 76*, 131, 135 & 139



Accommodation

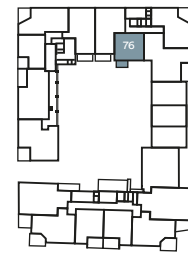
Living/Kitchen/Dining Area	6.77m x 3.93m	22'3" x 12'11"
Bedroom	3.80m x 3.45m	12'6" x 11'4"
Total internal area	50.5 sq. m.	543.6 sq. ft.
Balcony/Terrace	3.14m x 1.73m	10'4" x 5'8"

W – Wardrobe
UC – Utility Cupboard
FF – Fridge/Freezer
WD – Washer/Dryer
S – Storage

*Denotes apartments that are opposite handed/mirror image to the plans drawn. The floor plans provided are intended to only give a general indication of the proposed floor layout, are not drawn to scale and are not intended to form part of any offer, contract, warranty or representation. Measurements are given to the widest point, are approximate and are given as a guide only. They must not be relied upon as a statement or representation of fact. Do not use these measurements for carpet sizes, appliance spaces or items of furniture. Kitchen, bathroom and utility layouts may differ to build, and specific plot sizes and layouts may vary within the same unit type. Window sizes may vary. Please be aware the storage cupboard may include heating and electrical controls, which may reduce the storage available. For further clarification regarding specific individual plots, please ask our Sales Associates.



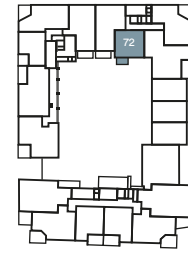
Chambers Apartments Norris Apartments



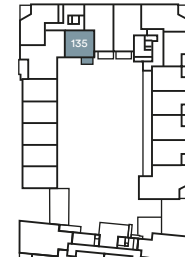
Third Floor
Plot 76



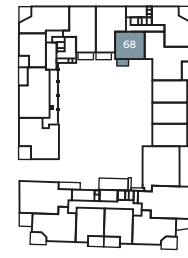
Third Floor
Plot 139



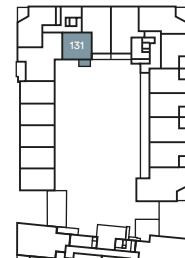
Second Floor
Plot 72



Second Floor
Plot 135



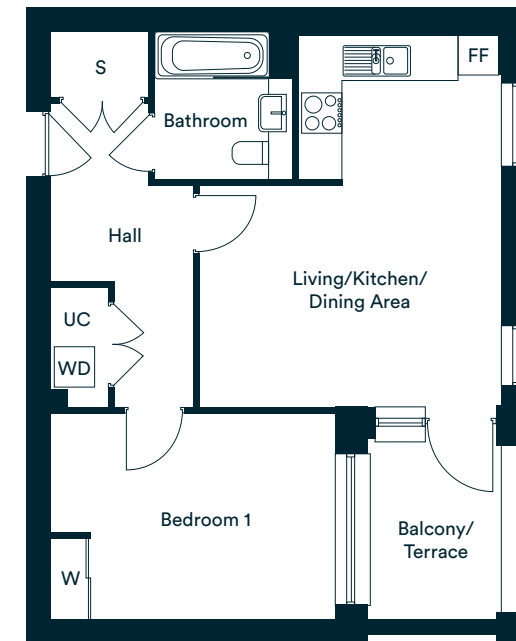
First Floor
Plot 68



First Floor
Plot 131

The Blackburne

Plots 143, 151, 159 & 167



Accommodation

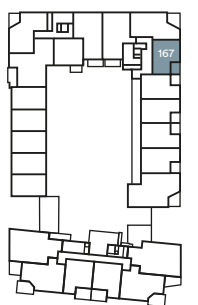
Living/Kitchen/Dining Area	5.59m x 4.51m	18'4" x 14'10"
Bedroom	4.25m x 3.07m	13'11" x 10'1"
Total internal area	51.0 sq. m.	549.0 sq. ft.
Balcony/Terrace	2.17m x 2.90m	7'2" x 9'6"

W – Wardrobe
UC – Utility Cupboard
FF – Fridge/Freezer
WD – Washer/Dryer
S – Storage

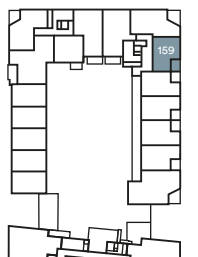
*Denotes apartments that are opposite handed/mirror image to the plans drawn. The floor plans provided are intended to only give a general indication of the proposed floor layout, are not drawn to scale and are not intended to form part of any offer, contract, warranty or representation. Measurements are given to the widest point, are approximate and are given as a guide only. They must not be relied upon as a statement or representation of fact. Do not use these measurements for carpet sizes, appliance spaces or items of furniture. Kitchen, bathroom and utility layouts may differ to build, and specific plot sizes and layouts may vary within the same unit type. Window sizes may vary. Please be aware the storage cupboard may include heating and electrical controls, which may reduce the storage available. For further clarification regarding specific individual plots, please ask our Sales Associates.



Frost House



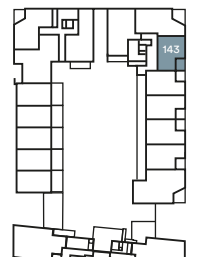
Third Floor
Plot 167



Second Floor
Plot 159



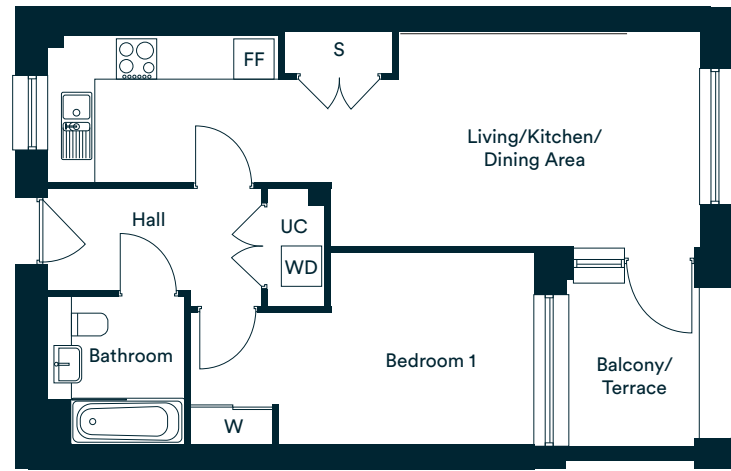
First Floor
Plot 151



Ground Floor
Plot 143

The Chilver

Plots 144*, 145, 146*, 147, 152*, 153, 154*, 155, 160*, 161, 162*, 163, 168*, 169, 170* & 171



Accommodation

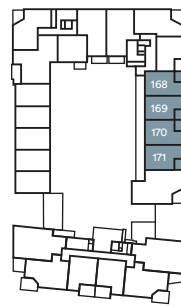
Living/Kitchen/Dining Area	9.67m x 3.21m	31'9" x 10'6"
Bedroom	5.11m x 2.86m	16'9" x 9'4"
Total internal area	52.7 sq. m.	567.3 sq. ft.
Balcony/Terrace	2.17m x 2.67m	7'2" x 8'9"

W – Wardrobe
 UC – Utility Cupboard
 FF – Fridge/Freezer
 WD – Washer/Dryer
 S – Storage

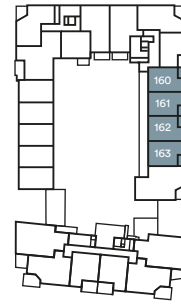
*Denotes apartments that are opposite handed/mirror image to the plans drawn. The floor plans provided are intended to only give a general indication of the proposed floor layout, are not drawn to scale and are not intended to form part of any offer, contract, warranty or representation. Measurements are given to the widest point, are approximate and are given as a guide only. They must not be relied upon as a statement or representation of fact. Do not use these measurements for carpet sizes, appliance spaces or items of furniture. Kitchen, bathroom and utility layouts may differ to build, and specific plot sizes and layouts may vary within the same unit type. Window sizes may vary. Please be aware the storage cupboard may include heating and electrical controls, which may reduce the storage available. For further clarification regarding specific individual plots, please ask our Sales Associates.



Frost House



Third Floor
Plots 168, 169, 170 & 171



Second Floor
Plots 160, 161, 162 & 163



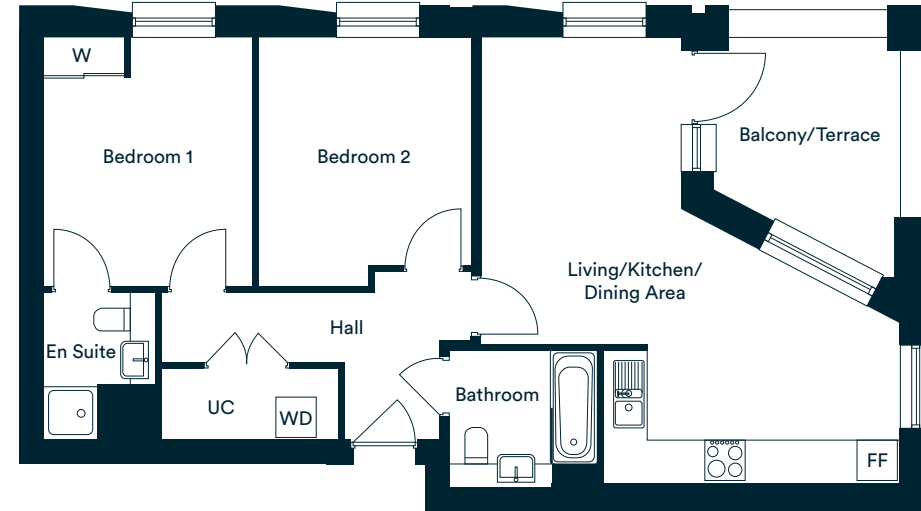
First Floor
Plots 152, 153, 154 & 155



Ground Floor
Plots 144, 145, 146 & 147

Two bedroom homes The Vera

Plots 142, 150, 158 & 166



Accommodation

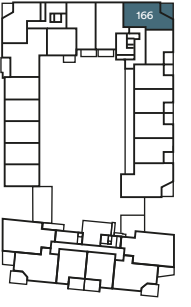
Living/Kitchen/Dining Area	6.65m x 6.25m	21'10" x 20'6"
Bedroom 1	3.70m x 3.14m	12'2" x 10'4"
Bedroom 2	3.70m x 3.16m	12'2" x 10'5"
Total internal area	70.3 sq. m.	756.7 sq. ft.
Balcony/Terrace	3.03m x 2.80m	9'11" x 9'2"

W – Wardrobe
 UC – Utility Cupboard
 FF – Fridge/Freezer
 WD – Washer/Dryer
 S – Storage

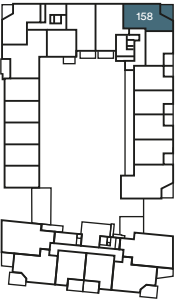
*Denotes apartments that are opposite handed/mirror image to the plans drawn. The floor plans provided are intended to only give a general indication of the proposed floor layout, are not drawn to scale and are not intended to form part of any offer, contract, warranty or representation. Measurements are given to the widest point, are approximate and are given as a guide only. They must not be relied upon as a statement or representation of fact. Do not use these measurements for carpet sizes, appliance spaces or items of furniture. Kitchen, bathroom and utility layouts may differ to build, and specific plot sizes and layouts may vary within the same unit type. Window sizes may vary. Please be aware the storage cupboard may include heating and electrical controls, which may reduce the storage available. For further clarification regarding specific individual plots, please ask our Sales Associates.



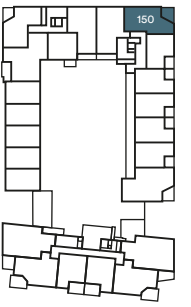
Frost House



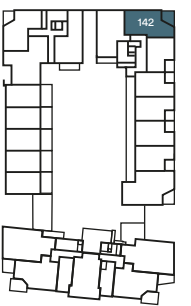
Third Floor
Plot 166



Second Floor
Plot 158



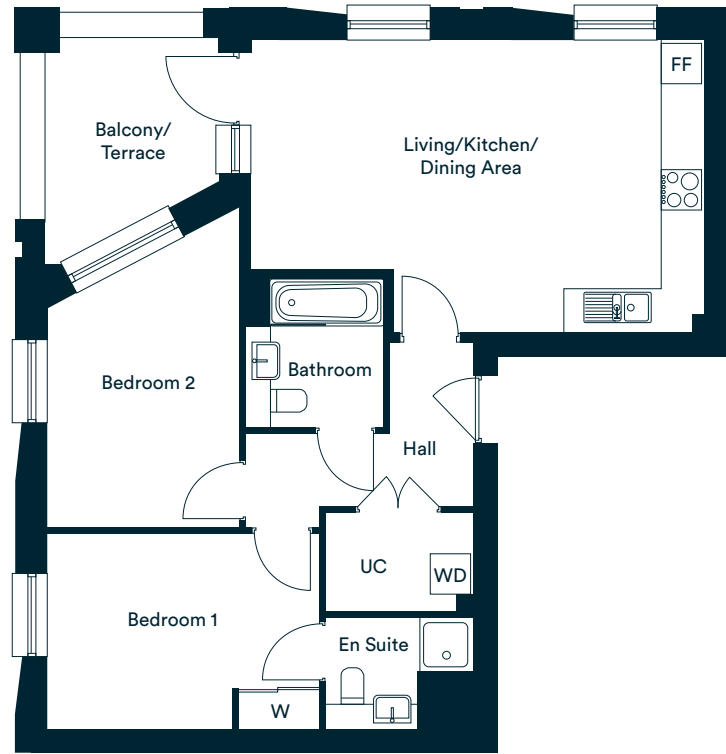
First Floor
Plot 150



Ground Floor
Plot 142

The Frost

Plots 66*, 70*, 74*, 78*, 126, 129, 133 & 137



Accommodation

Living/Kitchen/Dining Area	6.76m x 4.36m	22'2" x 14'4"
Bedroom 1	4.05m x 2.90m	13'4" x 9'6"
Bedroom 2	3.27m x 2.87m	11'9" x 9'5"
Total internal area	70.8 sq. m.	762.1 sq. ft.
Balcony/Terrace	2.78m x 2.60m	9'2" x 8'6"

W – Wardrobe
 UC – Utility Cupboard
 FF – Fridge/Freezer
 WD – Washer/Dryer
 S – Storage

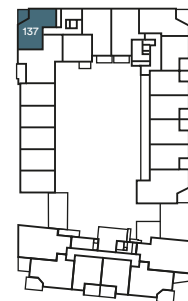
*Denotes apartments that are opposite handed/mirror image to the plans drawn. The floor plans provided are intended to only give a general indication of the proposed floor layout, are not drawn to scale and are not intended to form part of any offer, contract, warranty or representation. Measurements are given to the widest point, are approximate and are given as a guide only. They must not be relied upon as a statement or representation of fact. Do not use these measurements for carpet sizes, appliance spaces or items of furniture. Kitchen, bathroom and utility layouts may differ to build, and specific plot sizes and layouts may vary within the same unit type. Window sizes may vary. Please be aware the storage cupboard may include heating and electrical controls, which may reduce the storage available. For further clarification regarding specific individual plots, please ask our Sales Associates.



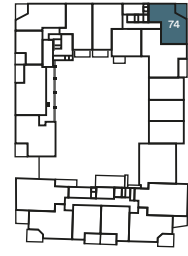
Chambers Apartments Norris Apartments



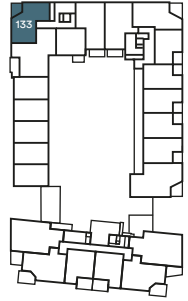
Third Floor
Plot 78



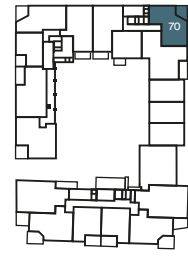
Third Floor
Plot 137



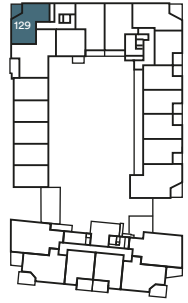
Second Floor
Plot 74



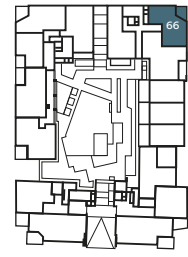
Second Floor
Plot 133



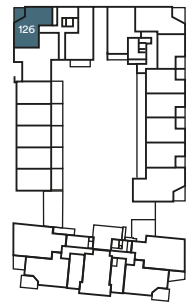
First Floor
Plot 70



First Floor
Plot 129



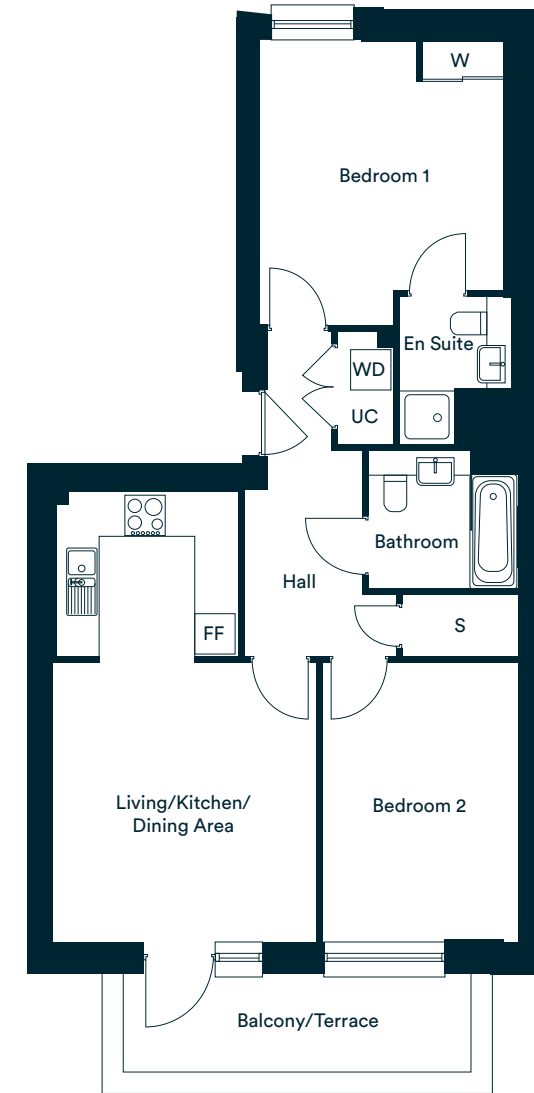
Ground Floor
Plot 66



Ground Floor
Plot 126

The Hart

Plot 65* & 127



Accommodation

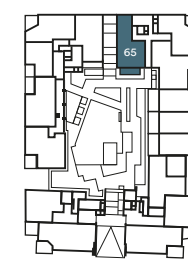
Living/Kitchen/Dining Area	6.71m x 3.94m	22'0" x 12'11"
Bedroom 1	4.24m x 3.63m	13'11" x 11'11"
Bedroom 2	4.17m x 2.91m	13'9" x 9'7"
Total internal area	71.3 sq. m.	767.5 sq. ft.
Balcony/Terrace	1.65m x 5.19m	5'5" x 17'1"

W – Wardrobe
 UC – Utility Cupboard
 FF – Fridge/Freezer
 WD – Washer/Dryer
 S – Storage

*Denotes apartments that are opposite handed/mirror image to the plans drawn. The floor plans provided are intended to only give a general indication of the proposed floor layout, are not drawn to scale and are not intended to form part of any offer, contract, warranty or representation. Measurements are given to the widest point, are approximate and are given as a guide only. They must not be relied upon as a statement or representation of fact. Do not use these measurements for carpet sizes, appliance spaces or items of furniture. Kitchen, bathroom and utility layouts may differ to build, and specific plot sizes and layouts may vary within the same unit type. Window sizes may vary. Please be aware the storage cupboard may include heating and electrical controls, which may reduce the storage available. For further clarification regarding specific individual plots, please ask our Sales Associates.



Chambers Apartments Norris Apartments



Ground Floor
Plot 65



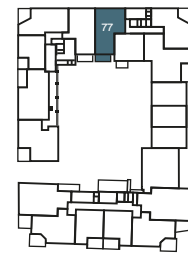
Ground Floor
Plot 127

The Richardson

Plots 69*, 73*, 77*, 130, 134 & 138



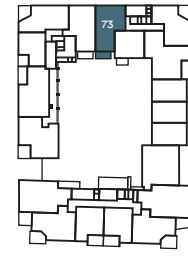
Chambers Apartments Norris Apartments



Third Floor
Plot 77



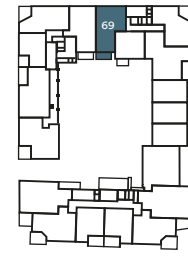
Third Floor
Plot 138



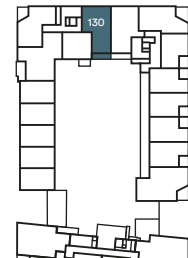
Second Floor
Plot 73



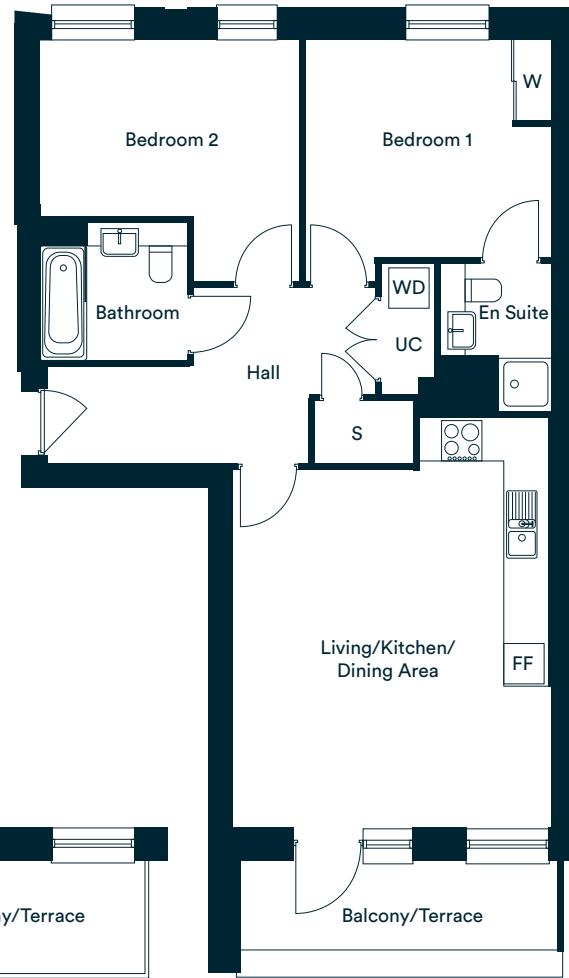
Second Floor
Plot 134



First Floor
Plot 69



First Floor
Plot 130



Plots 134 & 138

Accommodation

Living/Kitchen/Dining Area	6.12m x 4.77m	20'1" x 15'8"
Bedroom 1	3.68m x 3.24m	12'1" x 10'7"
Bedroom 2	3.86m x 3.60m	12'8" x 11'10"
Total internal area	74.0 sq. m.	796.5 sq. ft.
Balcony/Terrace – Plots 69 & 130	1.34m x 4.74m	4'5" x 15'7"
Balcony/Terrace – Plots 73, 77, 134 & 138	1.73m x 4.03m	5'8" x 13'3"

W – Wardrobe
UC – Utility Cupboard
FF – Fridge/Freezer
WD – Washer/Dryer
S – Storage

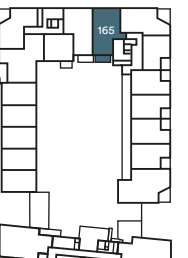
*Denotes apartments that are opposite handed/mirror image to the plans drawn. The floor plans provided are intended to only give a general indication of the proposed floor layout, are not drawn to scale and are not intended to form part of any offer, contract, warranty or representation. Measurements are given to the widest point, are approximate and are given as a guide only. They must not be relied upon as a statement or representation of fact. Do not use these measurements for carpet sizes, appliance spaces or items of furniture. Kitchen, bathroom and utility layouts may differ to build, and specific plot sizes and layouts may vary within the same unit type. Window sizes may vary. Please be aware the storage cupboard may include heating and electrical controls, which may reduce the storage available. For further clarification regarding specific individual plots, please ask our Sales Associates.

The Norma

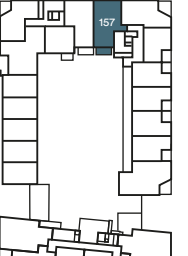
Plots 149, 157 & 165



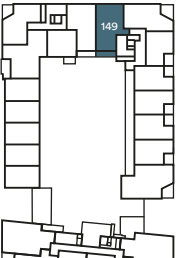
Frost House



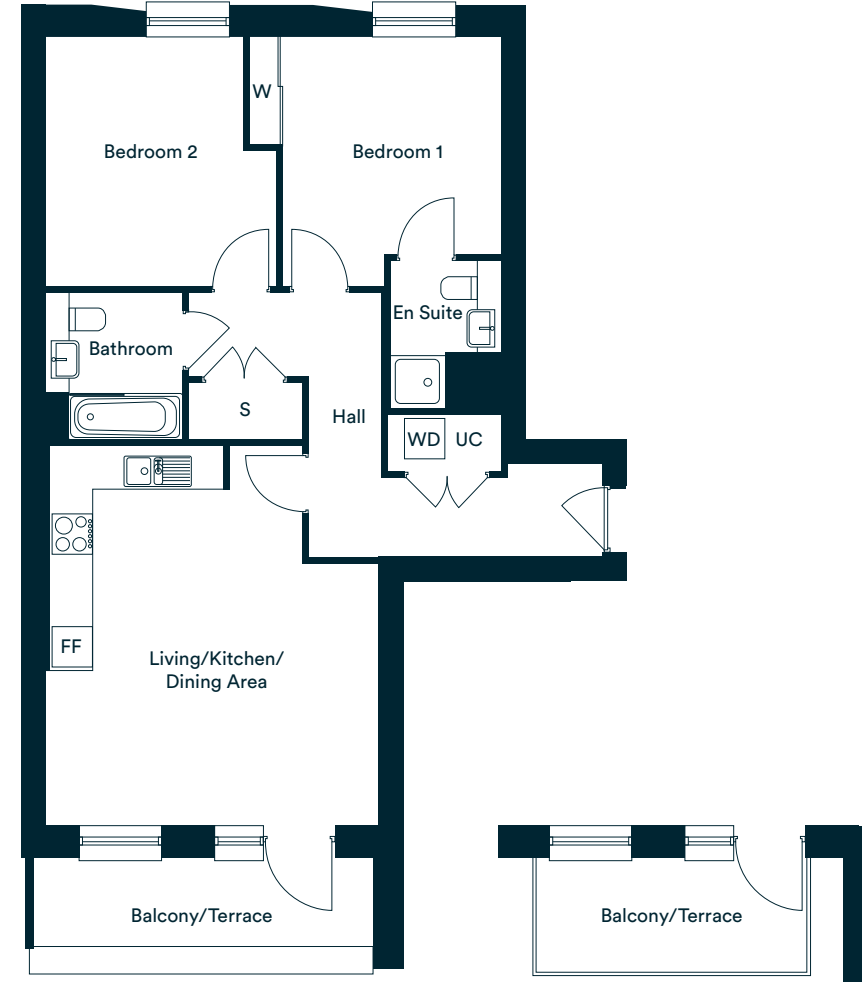
Third Floor
Plot 165



Second Floor
Plot 157



First Floor
Plot 149



Plots 157 & 165

Accommodation

Living/Kitchen/Dining Area	5.66m x 4.98m	18'7" x 16'4"
Bedroom 1	3.75m x 3.72m	12'4" x 12'2"
Bedroom 2	3.71m x 3.46m	12'2" x 11'4"
Total internal area	74.8 sq. m.	805.1 sq. ft.
Balcony/Terrace – Plot 149	1.34m x 5.07m	4'5" x 16'8"
Balcony/Terrace – Plots 157 & 165	1.73m x 4.03m	5'8" x 13'3"

W – Wardrobe
UC – Utility Cupboard
FF – Fridge/Freezer
WD – Washer/Dryer
S – Storage

*Denotes apartments that are opposite handed/mirror image to the plans drawn. The floor plans provided are intended to only give a general indication of the proposed floor layout, are not drawn to scale and are not intended to form part of any offer, contract, warranty or representation. Measurements are given to the widest point, are approximate and are given as a guide only. They must not be relied upon as a statement or representation of fact. Do not use these measurements for carpet sizes, appliance spaces or items of furniture. Kitchen, bathroom and utility layouts may differ to build, and specific plot sizes and layouts may vary within the same unit type. Window sizes may vary. Please be aware the storage cupboard may include heating and electrical controls, which may reduce the storage available. For further clarification regarding specific individual plots, please ask our Sales Associates.

The Leonard

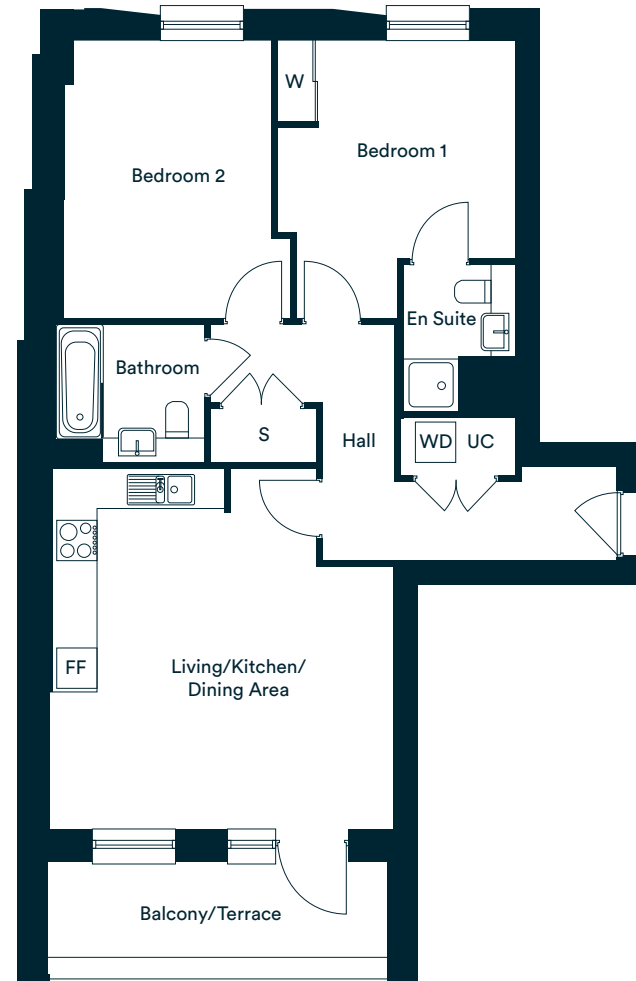
Plot 141



Frost House



Ground Floor
Plot 141



Accommodation

Living/Kitchen/Dining Area	5.39m x 5.13m	17'8" x 16'10"
Bedroom 1	4.14m x 3.54m	13'7" x 11'7"
Bedroom 2	4.14m x 3.37m	13'7" x 11'1"
Total internal area	75.2 sq. m.	809.5 sq. ft.
Balcony/Terrace	1.44m x 5.07m	4'9" x 16'8"

W – Wardrobe
UC – Utility Cupboard
FF – Fridge/Freezer
WD – Washer/Dryer
S – Storage

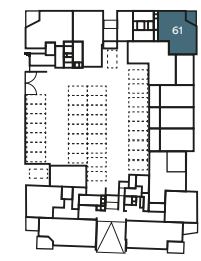
*Denotes apartments that are opposite handed/mirror image to the plans drawn. The floor plans provided are intended to only give a general indication of the proposed floor layout, are not drawn to scale and are not intended to form part of any offer, contract, warranty or representation. Measurements are given to the widest point, are approximate and are given as a guide only. They must not be relied upon as a statement or representation of fact. Do not use these measurements for carpet sizes, appliance spaces or items of furniture. Kitchen, bathroom and utility layouts may differ to build, and specific plot sizes and layouts may vary within the same unit type. Window sizes may vary. Please be aware the storage cupboard may include heating and electrical controls, which may reduce the storage available. For further clarification regarding specific individual plots, please ask our Sales Associates.

The Ramsey

61* & 124



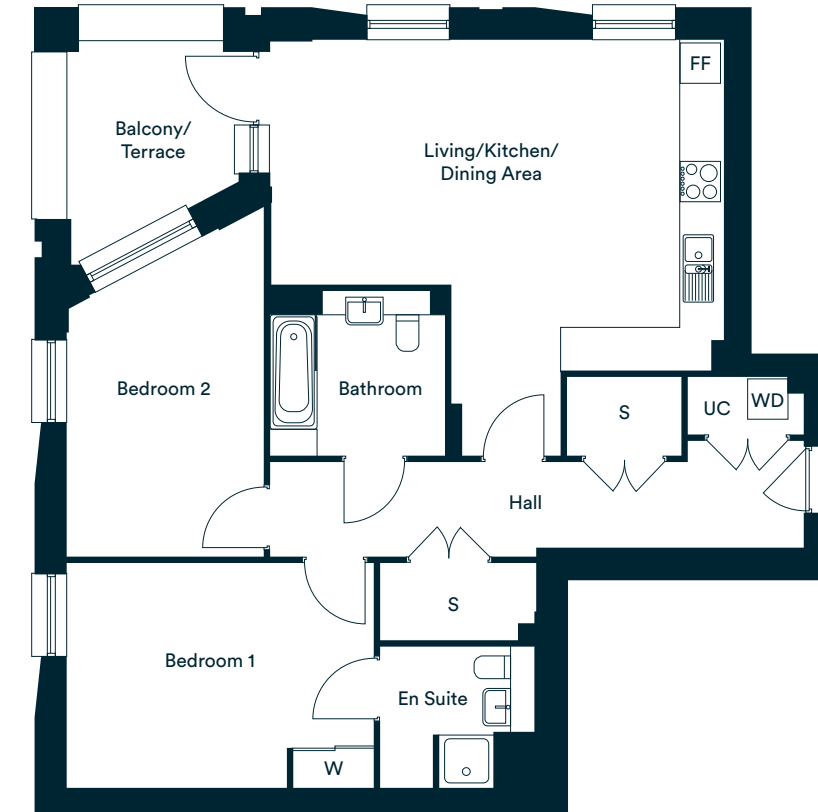
Chambers Apartments Norris Apartments



Lower Ground Floor
Plot 61



Lower Ground Floor
Plot 124



Accommodation

Living/Kitchen/Dining Area	6.11m x 4.93m	20'1" x 16'2"
Bedroom 1	4.58m x 3.35m	15'1" x 11'0"
Bedroom 2	3.69m x 2.94m	12'2" x 9'8"
Total internal area	92.9 sq. m.	1000.0 sq. ft.
Balcony/Terrace	2.81m x 2.57m	9'2" x 8'5"

W – Wardrobe
UC – Utility Cupboard
FF – Fridge/Freezer
WD – Washer/Dryer
S – Storage

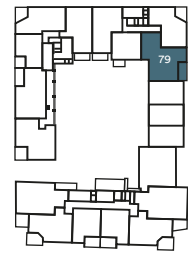
*Denotes apartments that are opposite handed/mirror image to the plans drawn. The floor plans provided are intended to only give a general indication of the proposed floor layout, are not drawn to scale and are not intended to form part of any offer, contract, warranty or representation. Measurements are given to the widest point, are approximate and are given as a guide only. They must not be relied upon as a statement or representation of fact. Do not use these measurements for carpet sizes, appliance spaces or items of furniture. Kitchen, bathroom and utility layouts may differ to build, and specific plot sizes and layouts may vary within the same unit type. Window sizes may vary. Please be aware the storage cupboard may include heating and electrical controls, which may reduce the storage available. For further clarification regarding specific individual plots, please ask our Sales Associates.

The Shaw

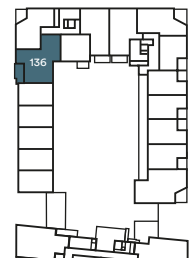
Plots 67*, 71*, 75*, 79*, 125, 128, 132 & 136



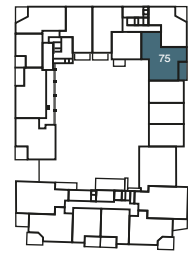
Chambers Apartments Norris Apartments



Third Floor
Plot 79



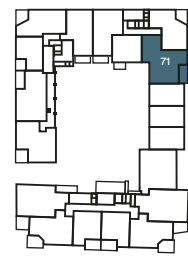
Third Floor
Plot 136



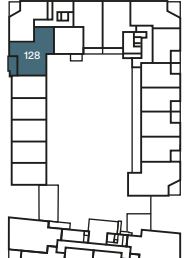
Second Floor
Plot 75



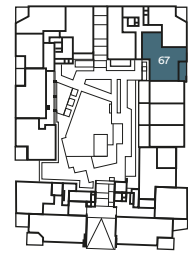
Second Floor
Plot 132



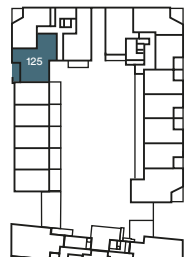
First Floor
Plot 71



First Floor
Plot 128



Ground Floor
Plot 67



Ground Floor
Plot 125



Accommodation

Living/Kitchen/Dining Area	7.26m x 5.49m	23'10" x 18'0"
Bedroom 1	4.37m x 3.41m	14'4" x 11'2"
Bedroom 2	3.93m x 3.49m	12'11" x 11'6"
Total internal area	95.0 sq. m.	1022.6 sq. ft.
Balcony/Terrace	2.11m x 4.62m	6'11" x 15'2"

W – Wardrobe
UC – Utility Cupboard
FF – Fridge/Freezer
WD – Washer/Dryer
S – Storage

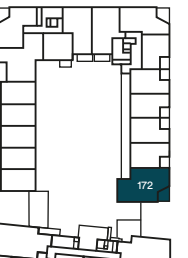
*Denotes apartments that are opposite handed/mirror image to the plans drawn. The floor plans provided are intended to only give a general indication of the proposed floor layout, are not drawn to scale and are not intended to form part of any offer, contract, warranty or representation. Measurements are given to the widest point, are approximate and are given as a guide only. They must not be relied upon as a statement or representation of fact. Do not use these measurements for carpet sizes, appliance spaces or items of furniture. Kitchen, bathroom and utility layouts may differ to build, and specific plot sizes and layouts may vary within the same unit type. Window sizes may vary. Please be aware the storage cupboard may include heating and electrical controls, which may reduce the storage available. For further clarification regarding specific individual plots, please ask our Sales Associates.

Three bedroom home The Winstone

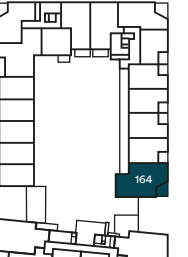
Plots 148, 156, 164, 172



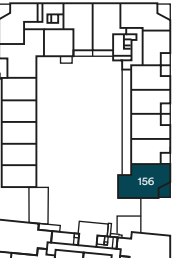
Frost House



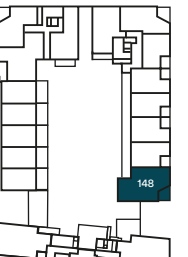
Third Floor
Plot 172



Second Floor
Plot 164



First Floor
Plot 156



Ground Floor
Plot 148



Accommodation

Living/Kitchen/Dining Area	5.87m x 5.51m	19'3" x 18'1"
Bedroom 1	5.57m x 3.39m	18'3" x 11'2"
Bedroom 2	4.15m x 3.36m	13'8" x 11'0"
Bedroom 3	3.36m x 2.44m	11'0" x 8'0"
Total internal area	91.6 sq. m.	986.0 sq. ft.
Balcony/Terrace	2.67m x 2.95m	8'9" x 9'8"

W – Wardrobe
UC – Utility Cupboard
FF – Fridge/Freezer
WD – Washer/Dryer
S – Storage

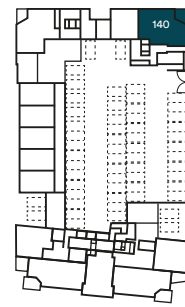
*Denotes apartments that are opposite handed/mirror image to the plans drawn. The floor plans provided are intended to only give a general indication of the proposed floor layout, are not drawn to scale and are not intended to form part of any offer, contract, warranty or representation. Measurements are given to the widest point, are approximate and are given as a guide only. They must not be relied upon as a statement or representation of fact. Do not use these measurements for carpet sizes, appliance spaces or items of furniture. Kitchen, bathroom and utility layouts may differ to build, and specific plot sizes and layouts may vary within the same unit type. Window sizes may vary. Please be aware the storage cupboard may include heating and electrical controls, which may reduce the storage available. For further clarification regarding specific individual plots, please ask our Sales Associates.

The Carey

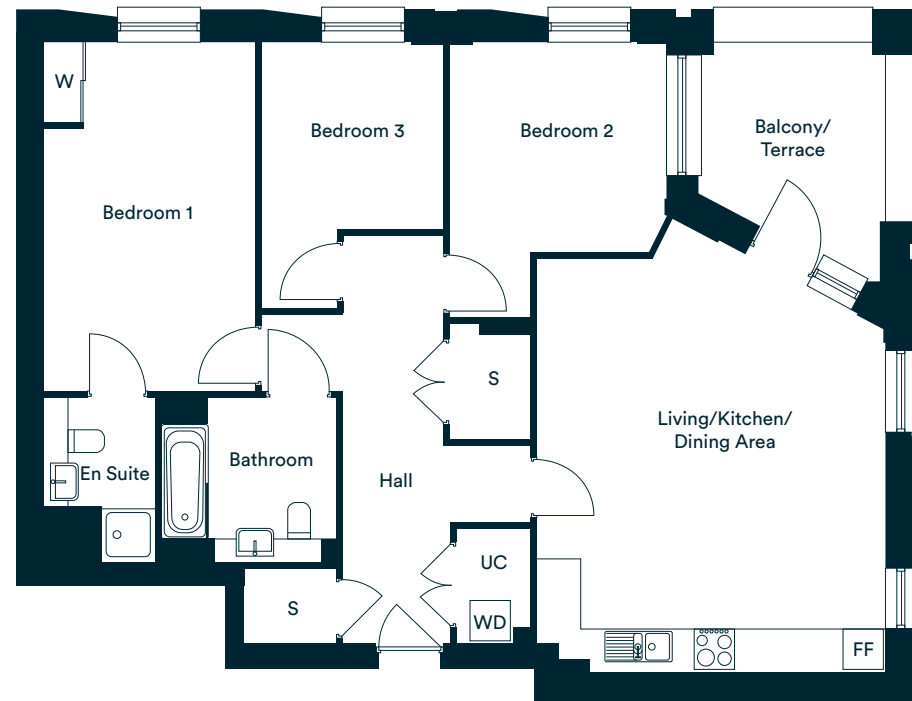
Plots 140



Frost House



Lower Ground Floor
Plot 140



Accommodation

Living/Kitchen/Dining Area	5.75m x 5.19m	18'1" x 17'1"
Bedroom 1	5.20m x 3.15m	17'1" x 10'4"
Bedroom 2	4.11m x 3.24m	13'6" x 10'8"
Bedroom 3	3.96m x 2.70m	13'0" x 8'10"
Total internal area	99.7 sq. m.	1073.2 sq. ft.
Balcony/Terrace	3.03m x 2.80m	9'11" x 9'2"

W – Wardrobe
UC – Utility Cupboard
FF – Fridge/Freezer
WD – Washer/Dryer
S – Storage

*Denotes apartments that are opposite handed/mirror image to the plans drawn. The floor plans provided are intended to only give a general indication of the proposed floor layout, are not drawn to scale and are not intended to form part of any offer, contract, warranty or representation. Measurements are given to the widest point, are approximate and are given as a guide only. They must not be relied upon as a statement or representation of fact. Do not use these measurements for carpet sizes, appliance spaces or items of furniture. Kitchen, bathroom and utility layouts may differ to build, and specific plot sizes and layouts may vary within the same unit type. Window sizes may vary. Please be aware the storage cupboard may include heating and electrical controls, which may reduce the storage available. For further clarification regarding specific individual plots, please ask our Sales Associates.

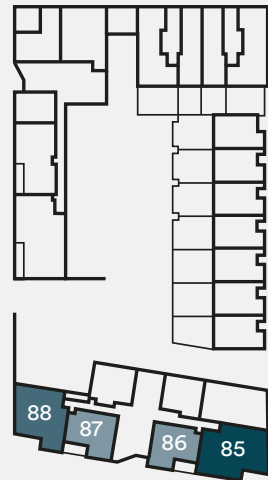


Photography of showhome, indicative only.

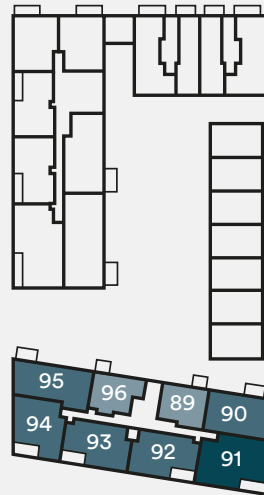
Plot locators Collett Mansions



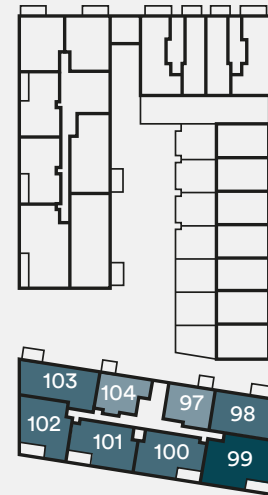
Ground Floor



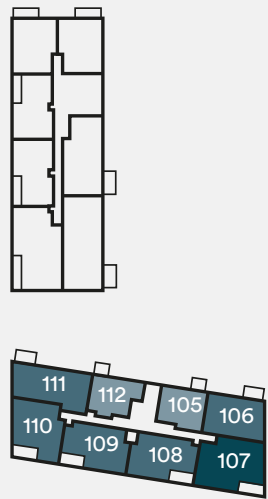
First Floor



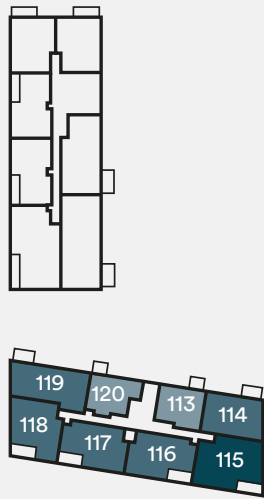
Second Floor



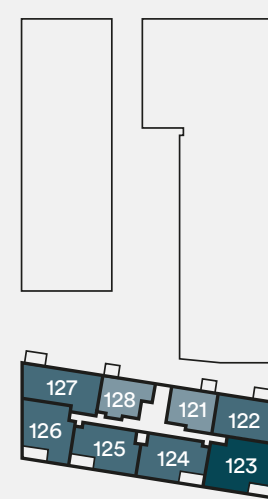
Third Floor



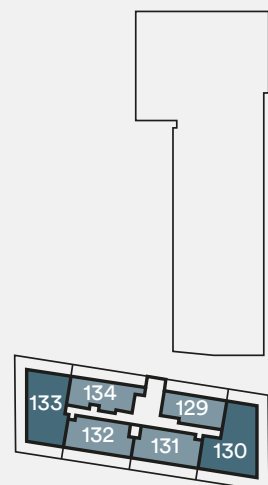
Fourth Floor



Fifth Floor



Sixth Floor



Key

- 1 bedroom homes
- 2 bedroom homes
- 3 bedroom homes

The floorplans provided are intended to only give a general indication of the proposed floor layout, are not drawn to scale and are not intended to form part of any offer, contract, warranty or representation. Measurements are given to the widest point, are approximate and are given as a guide only. They must not be relied upon as a statement or representation of fact. Do not use these measurements for carpet sizes, appliance spaces or items of furniture. Kitchen, bathroom and utility layouts may differ to build, and specific plot sizes and layouts may vary within the same unit type. For further clarification regarding specific individual plots, please ask our Sales Associates.



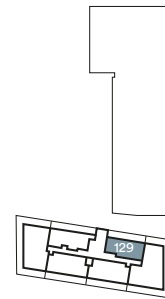
Photography of showhome, indicative only.

One bedroom homes The Gellard

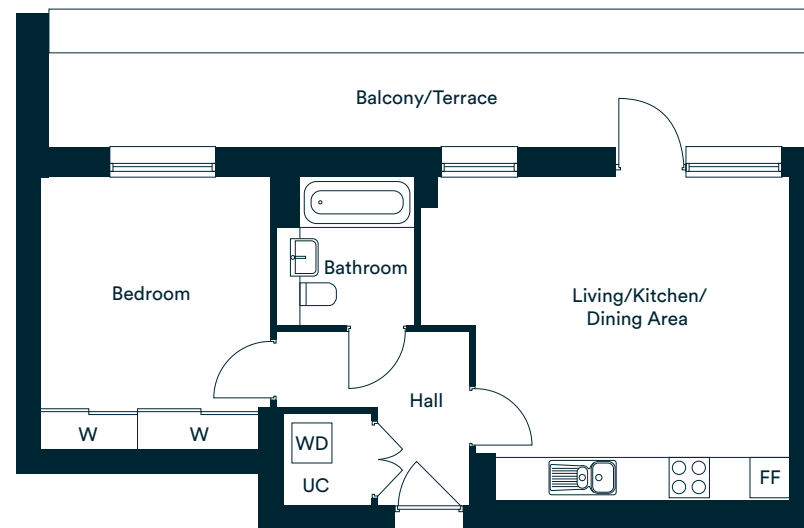
Plots 129



Collett Mansions



Sixth Floor
Plot 129



Accommodation

Living/Kitchen/Dining Area	5.50m x 4.81m	18'1" x 15'10"
Bedroom	4.58m x 3.42m	13'4" x 11'3"
Total internal area	51.4 sq. m.	553.2 sq. ft.
Balcony/Terrace	11.2m x 1.47m	36'10" x 4'10"

W – Wardrobe
UC – Utility Cupboard
FF – Fridge/Freezer
WD – Washer/Dryer
S – Storage

*Denotes apartments that are opposite handed/mirror image to the plans drawn. The floor plans provided are intended to only give a general indication of the proposed floor layout, are not drawn to scale and are not intended to form part of any offer, contract, warranty or representation. Measurements are given to the widest point, are approximate and are given as a guide only. They must not be relied upon as a statement or representation of fact. Do not use these measurements for carpet sizes, appliance spaces or items of furniture. Kitchen, bathroom and utility layouts may differ to build, and specific plot sizes and layouts may vary within the same unit type. Window sizes may vary. Please be aware the storage cupboard may include heating and electrical controls, which may reduce the storage available. For further clarification regarding specific individual plots, please ask our Sales Associates.



Photography of showhome, indicative only.

The Waylen

Plots 89, 97, 105, 113 & 121

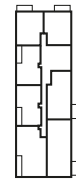


Collett Mansions

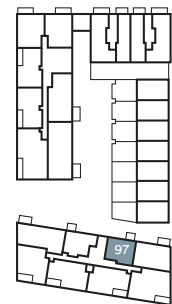


Fifth Floor
Plot 121

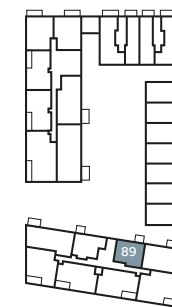
Fourth Floor
Plot 113



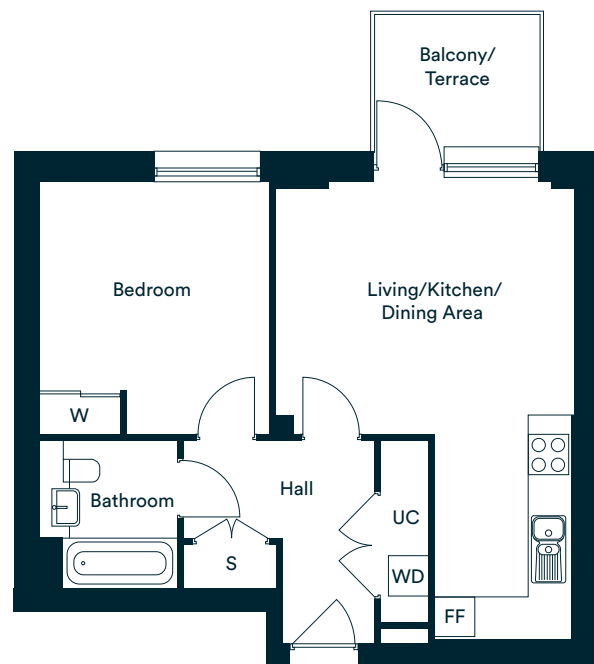
Third Floor
Plot 105



Second Floor
Plot 97



First Floor
Plot 89



Accommodation

Living/Kitchen/Dining Area	6.70m x 4.46m	22'0" x 14'8"
Bedroom	3.75m x 3.42m	12'4" x 11'3"
Total internal area	51.8 sq. m.	557.5 sq. ft.
Balcony/Terrace	2.48m x 2.05m	8'2" x 6'9"

W – Wardrobe
UC – Utility Cupboard
FF – Fridge/Freezer
WD – Washer/Dryer
S – Storage

*Denotes apartments that are opposite handed/mirror image to the plans drawn. The floor plans provided are intended to only give a general indication of the proposed floor layout, are not drawn to scale and are not intended to form part of any offer, contract, warranty or representation. Measurements are given to the widest point, are approximate and are given as a guide only. They must not be relied upon as a statement or representation of fact. Do not use these measurements for carpet sizes, appliance spaces or items of furniture. Kitchen, bathroom and utility layouts may differ to build, and specific plot sizes and layouts may vary within the same unit type. Window sizes may vary. Please be aware the storage cupboard may include heating and electrical controls, which may reduce the storage available. For further clarification regarding specific individual plots, please ask our Sales Associates.

The Clark

Plots 96, 104, 112, 120 & 128

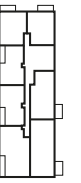


Collett Mansions

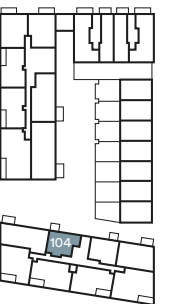


Fifth Floor
Plot 128

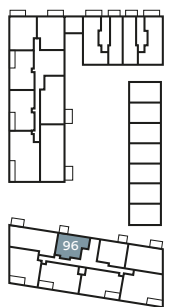
Fourth Floor
Plot 120



Third Floor
Plot 112



Second Floor
Plot 104



First Floor
Plot 96



Accommodation

Living/Kitchen/Dining Area	5.99m x 4.27m	19'8" x 14'0"
Bedroom	4.87m x 2.93m	16'0" x 9'8"
Total internal area	52.7 sq. m.	567.2 sq. ft.
Balcony/Terrace	2.48m x 2.05m	8'2" x 6'9"

W – Wardrobe
UC – Utility Cupboard
FF – Fridge/Freezer
WD – Washer/Dryer
S – Storage

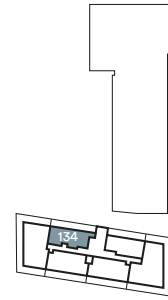
*Denotes apartments that are opposite handed/mirror image to the plans drawn. The floor plans provided are intended to only give a general indication of the proposed floor layout, are not drawn to scale and are not intended to form part of any offer, contract, warranty or representation. Measurements are given to the widest point, are approximate and are given as a guide only. They must not be relied upon as a statement or representation of fact. Do not use these measurements for carpet sizes, appliance spaces or items of furniture. Kitchen, bathroom and utility layouts may differ to build, and specific plot sizes and layouts may vary within the same unit type. Window sizes may vary. Please be aware the storage cupboard may include heating and electrical controls, which may reduce the storage available. For further clarification regarding specific individual plots, please ask our Sales Associates.

The Hinton

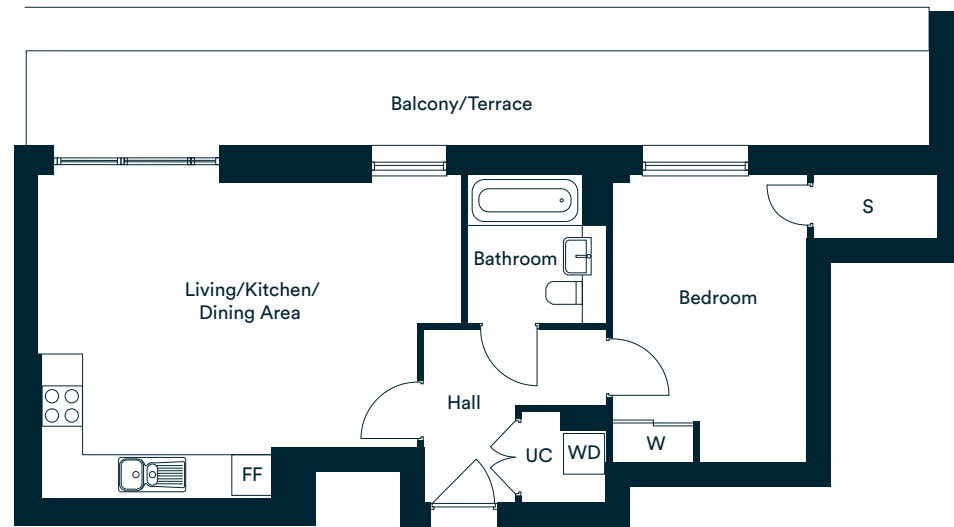
Plot 134



Collett Mansions



Sixth Floor
Plot 134



Accommodation

Living/Kitchen/Dining Area	6.31m x 4.77m	20'9" x 15'8"
Bedroom	4.27m x 2.89m	14'0" x 9'6"
Total internal area	54.4 sq. m.	585.5 sq. ft.
Balcony/Terrace	13.42m x 1.47m	44'1" x 4'10"

W – Wardrobe
UC – Utility Cupboard
FF – Fridge/Freezer
WD – Washer/Dryer
S – Storage

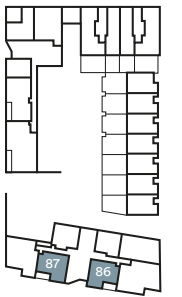
*Denotes apartments that are opposite handed/mirror image to the plans drawn. The floor plans provided are intended to only give a general indication of the proposed floor layout, are not drawn to scale and are not intended to form part of any offer, contract, warranty or representation. Measurements are given to the widest point, are approximate and are given as a guide only. They must not be relied upon as a statement or representation of fact. Do not use these measurements for carpet sizes, appliance spaces or items of furniture. Kitchen, bathroom and utility layouts may differ to build, and specific plot sizes and layouts may vary within the same unit type. Window sizes may vary. Please be aware the storage cupboard may include heating and electrical controls, which may reduce the storage available. For further clarification regarding specific individual plots, please ask our Sales Associates.

The Curtis

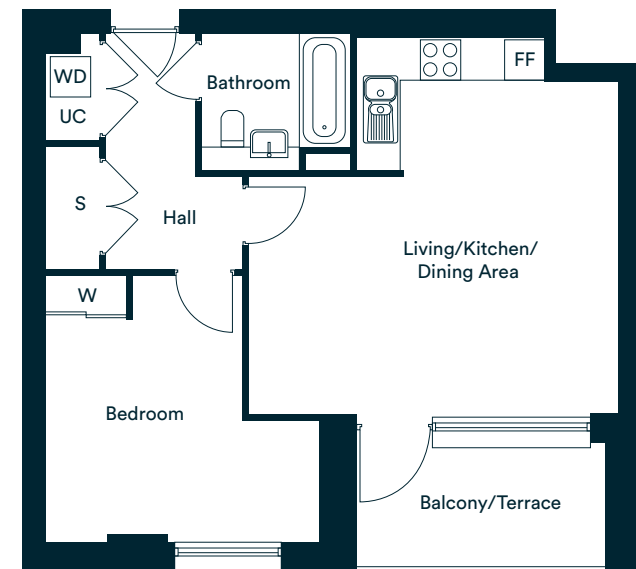
Plots 86 & 87*



Collett Mansions



Ground Floor
Plots 86 & 87



Accommodation

Living/Kitchen/Dining Area	5.62m x 5.51m	18'6" x 18'1"
Bedroom	4.06m x 3.96m	13'4" x 13'0"
Total internal area	56.4 sq. m.	607.0 sq. ft.
Balcony/Terrace	3.72m x 2.11m	12'3" x 6'11"

W – Wardrobe
UC – Utility Cupboard
FF – Fridge/Freezer
WD – Washer/Dryer
S – Storage

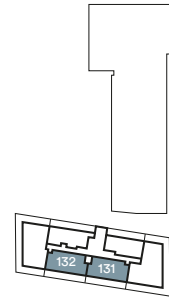
*Denotes apartments that are opposite handed/mirror image to the plans drawn. The floor plans provided are intended to only give a general indication of the proposed floor layout, are not drawn to scale and are not intended to form part of any offer, contract, warranty or representation. Measurements are given to the widest point, are approximate and are given as a guide only. They must not be relied upon as a statement or representation of fact. Do not use these measurements for carpet sizes, appliance spaces or items of furniture. Kitchen, bathroom and utility layouts may differ to build, and specific plot sizes and layouts may vary within the same unit type. Window sizes may vary. Please be aware the storage cupboard may include heating and electrical controls, which may reduce the storage available. For further clarification regarding specific individual plots, please ask our Sales Associates.

The Dunn

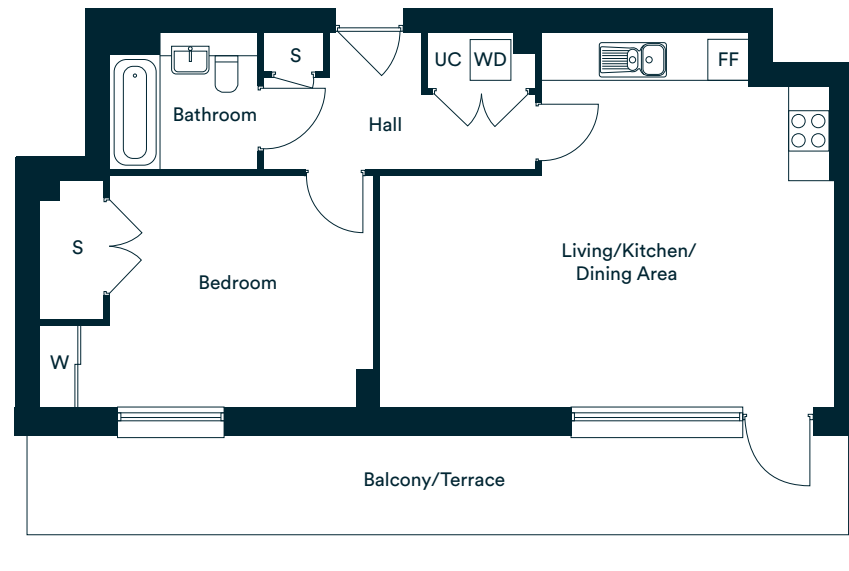
Plots 131 & 132*



Collett Mansions



Sixth Floor
Plots 131 & 132



Accommodation

Living/Kitchen/Dining Area	6.77m x 5.50m	22'3" x 18'1"
Bedroom	4.97m x 3.42m	16'4" x 11'3"
Total internal area	62.4 sq. m.	671.66 sq. ft.
Balcony/Terrace	12.14m x 1.47m	39'10" x 4'10"

W – Wardrobe
UC – Utility Cupboard
FF – Fridge/Freezer
WD – Washer/Dryer
S – Storage

*Denotes apartments that are opposite handed/mirror image to the plans drawn. The floor plans provided are intended to only give a general indication of the proposed floor layout, are not drawn to scale and are not intended to form part of any offer, contract, warranty or representation. Measurements are given to the widest point, are approximate and are given as a guide only. They must not be relied upon as a statement or representation of fact. Do not use these measurements for carpet sizes, appliance spaces or items of furniture. Kitchen, bathroom and utility layouts may differ to build, and specific plot sizes and layouts may vary within the same unit type. Window sizes may vary. Please be aware the storage cupboard may include heating and electrical controls, which may reduce the storage available. For further clarification regarding specific individual plots, please ask our Sales Associates.

Two bedroom homes The Wray

Plots 90, 98, 106, 114 & 122

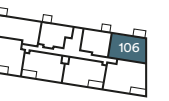
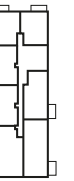


Collett Mansions

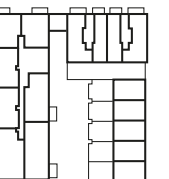


Fifth Floor
Plot 122

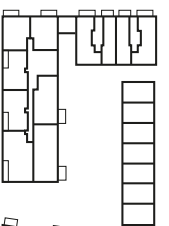
Fourth Floor
Plot 114



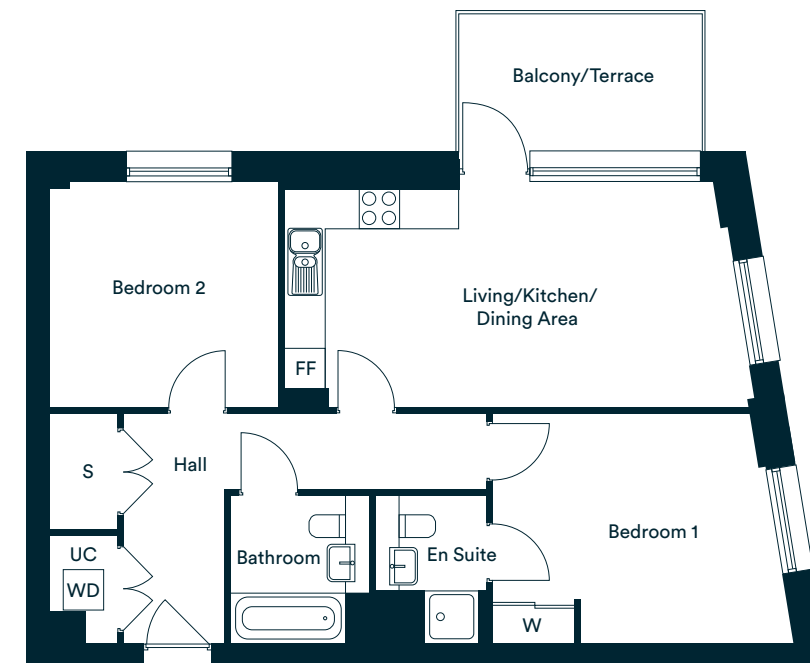
Third Floor
Plot 106



Second Floor
Plot 98



First Floor
Plot 90



Accommodation

Living/Kitchen/Dining Area	6.99m x 3.35m	13'0" x 11'0"
Bedroom 1	4.47m x 3.82m	14'8" x 12'7"
Bedroom 2	3.40m x 3.35m	11'2" x 11'0"
Total internal area	72.1 sq. m.	776.0 sq. ft.
Balcony/Terrace	3.61m x 2.05m	11'10" x 6'9"

W – Wardrobe
UC – Utility Cupboard
FF – Fridge/Freezer
WD – Washer/Dryer
S – Storage

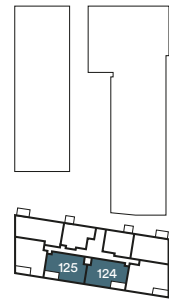
*Denotes apartments that are opposite handed/mirror image to the plans drawn. The floor plans provided are intended to only give a general indication of the proposed floor layout, are not drawn to scale and are not intended to form part of any offer, contract, warranty or representation. Measurements are given to the widest point, are approximate and are given as a guide only. They must not be relied upon as a statement or representation of fact. Do not use these measurements for carpet sizes, appliance spaces or items of furniture. Kitchen, bathroom and utility layouts may differ to build, and specific plot sizes and layouts may vary within the same unit type. Window sizes may vary. Please be aware the storage cupboard may include heating and electrical controls, which may reduce the storage available. For further clarification regarding specific individual plots, please ask our Sales Associates.



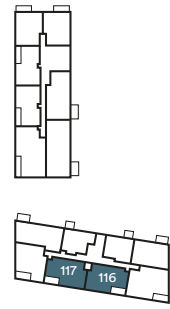
The Dobson

Plots 92, 93*, 100, 101*, 108, 109*, 116, 117*, 124 & 125*

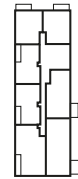
Collett Mansions



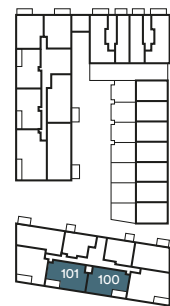
Fifth Floor
Plots 124 & 125



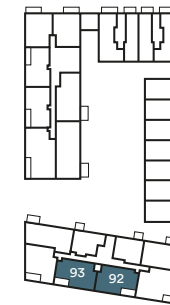
Fourth Floor
Plots 116 & 117



Third Floor
Plots 108 & 109



Second Floor
Plots 100 & 101



First Floor
Plots 93 & 92



Plots 100, 101, 116 & 117

Accommodation

Living/Kitchen/Dining Area	5.68m x 5.59m	18'8" x 18'5"
Bedroom 1	4.46m x 4.15m	14'8" x 13'8"
Bedroom 2	4.15m x 3.08m	13'8" x 10'2"
Total internal area	77.7 sq. m.	836.3 sq. ft.
Balcony/Terrace	3.72m x 1.85m	12'3" x 6'1"

W – Wardrobe
 UC – Utility Cupboard
 FF – Fridge/Freezer
 WD – Washer/Dryer
 S – Storage

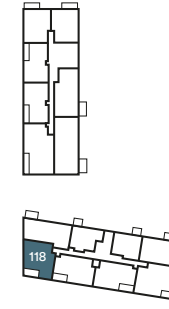
*Denotes apartments that are opposite handed/mirror image to the plans drawn. The floor plans provided are intended to only give a general indication of the proposed floor layout, are not drawn to scale and are not intended to form part of any offer, contract, warranty or representation. Measurements are given to the widest point, are approximate and are given as a guide only. They must not be relied upon as a statement or representation of fact. Do not use these measurements for carpet sizes, appliance spaces or items of furniture. Kitchen, bathroom and utility layouts may differ to build, and specific plot sizes and layouts may vary within the same unit type. Window sizes may vary. Please be aware the storage cupboard may include heating and electrical controls, which may reduce the storage available. For further clarification regarding specific individual plots, please ask our Sales Associates.



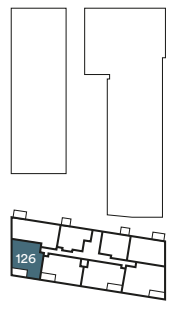
The Hope

Plots 88, 94, 102, 110, 118 & 126

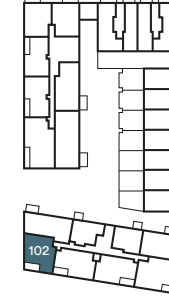
Collett Mansions



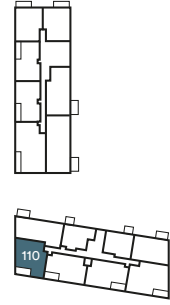
Fourth Floor
Plot 118



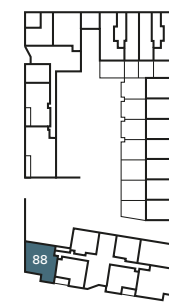
Fifth Floor
Plot 126



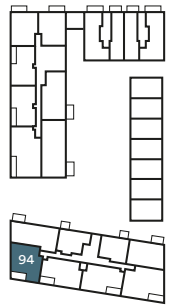
Second Floor
Plot 102



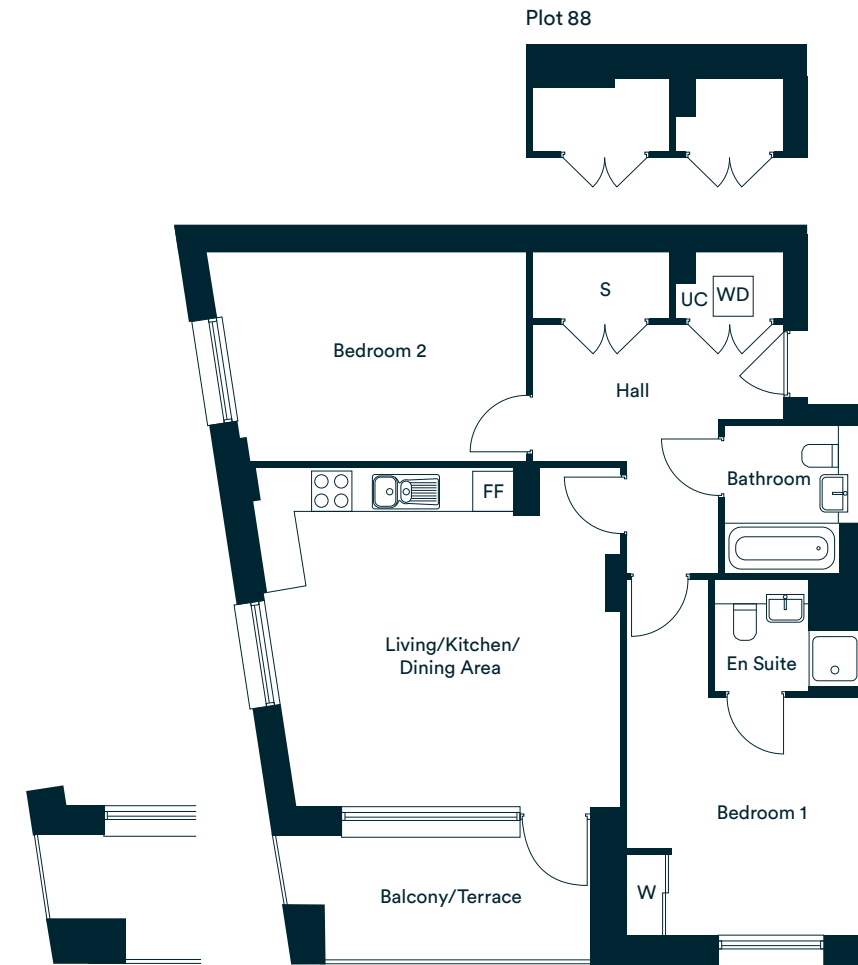
Third Floor
Plot 110



Ground Floor
Plot 88



First Floor
Plot 94



Plots 88, 102 & 118

Accommodation

Living/Kitchen/Dining Area	5.36m x 5.04m	17'7" x 16'7"
Bedroom 1	5.28m x 3.49m	17'4" x 11'6"
Bedroom 2	4.73m x 3.12m	15'6" x 10'3"
Total internal area	78.5 sq. m.	844.9 sq. ft.
Balcony/Terrace	4.68m x 1.85m	15'5" x 6'1"

W – Wardrobe
 UC – Utility Cupboard
 FF – Fridge/Freezer
 WD – Washer/Dryer
 S – Storage

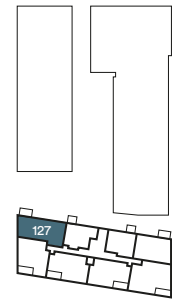
*Denotes apartments that are opposite handed/mirror image to the plans drawn. The floor plans provided are intended to only give a general indication of the proposed floor layout, are not drawn to scale and are not intended to form part of any offer, contract, warranty or representation. Measurements are given to the widest point, are approximate and are given as a guide only. They must not be relied upon as a statement or representation of fact. Do not use these measurements for carpet sizes, appliance spaces or items of furniture. Kitchen, bathroom and utility layouts may differ to build, and specific plot sizes and layouts may vary within the same unit type. Window sizes may vary. Please be aware the storage cupboard may include heating and electrical controls, which may reduce the storage available. For further clarification regarding specific individual plots, please ask our Sales Associates.

The Meredith

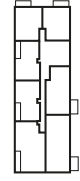
Plots 95, 103, 111, 119 & 127



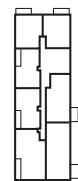
Collett Mansions



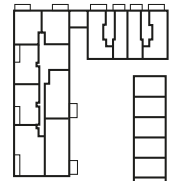
Fifth Floor
Plot 127



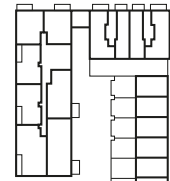
Fourth Floor
Plot 119



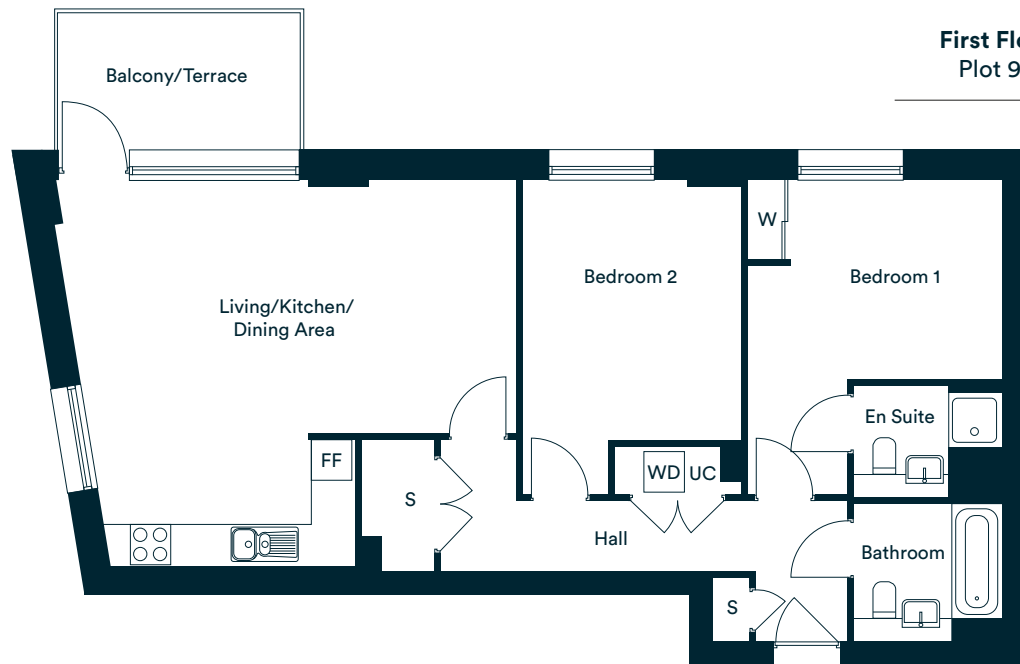
Third Floor
Plot 111



First Floor
Plot 95



Second Floor
Plot 103



Accommodation

Living/Kitchen/Dining Area	6.85m x 5.77m	22'6" x 18'11"
Bedroom 1	4.68m x 3.79m	15'5" x 12'5"
Bedroom 2	4.68m x 3.25m	15'5" x 10'8"
Total internal area	84.5 sq. m.	909.5 sq. ft.
Balcony/Terrace	3.61m x 2.06m	11'10" x 6'9"

W – Wardrobe
 UC – Utility Cupboard
 FF – Fridge/Freezer
 WD – Washer/Dryer
 S – Storage

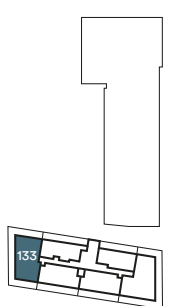
*Denotes apartments that are opposite handed/mirror image to the plans drawn. The floor plans provided are intended to only give a general indication of the proposed floor layout, are not drawn to scale and are not intended to form part of any offer, contract, warranty or representation. Measurements are given to the widest point, are approximate and are given as a guide only. They must not be relied upon as a statement or representation of fact. Do not use these measurements for carpet sizes, appliance spaces or items of furniture. Kitchen, bathroom and utility layouts may differ to build, and specific plot sizes and layouts may vary within the same unit type. Window sizes may vary. Please be aware the storage cupboard may include heating and electrical controls, which may reduce the storage available. For further clarification regarding specific individual plots, please ask our Sales Associates.

The Jones

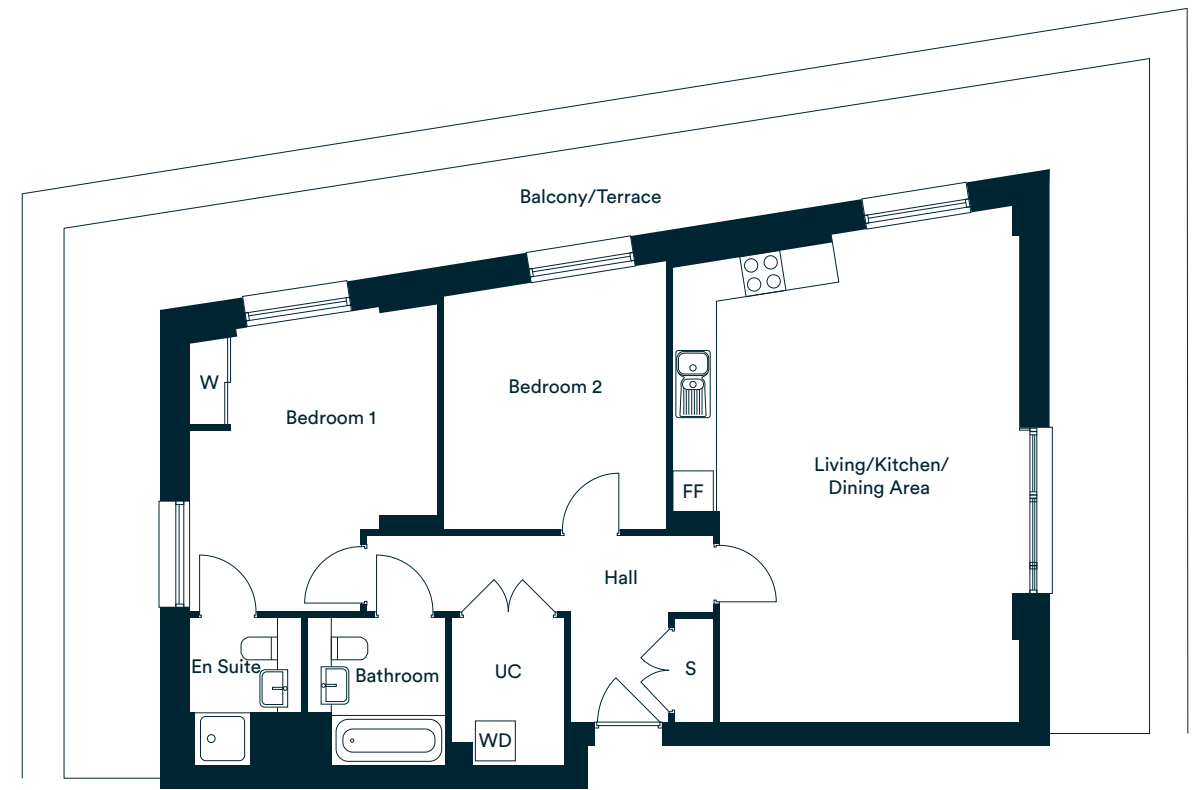
Plot 133



Collett Mansions



Sixth Floor
Plot 133



Accommodation

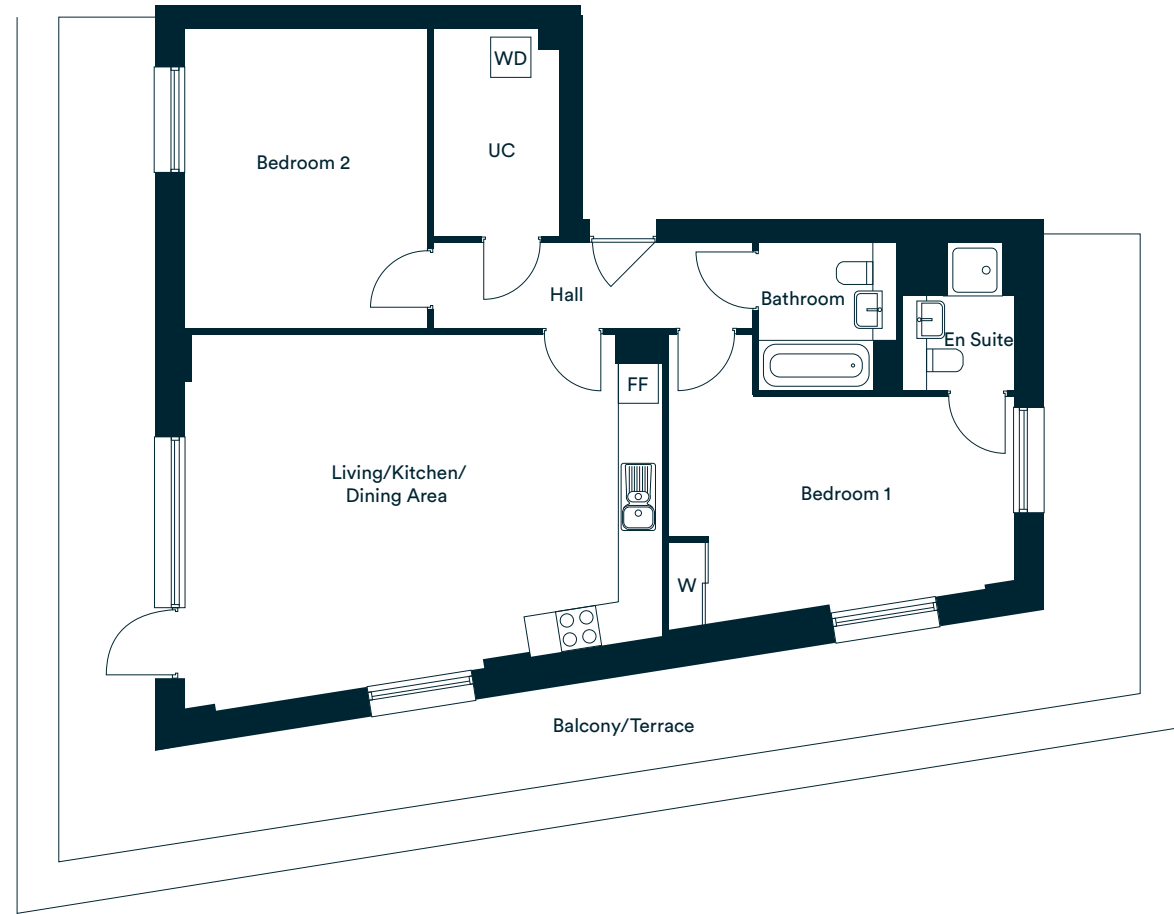
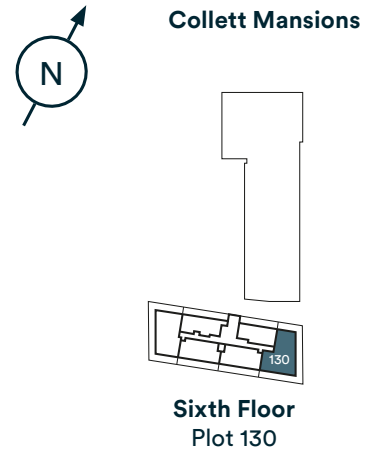
Living/Kitchen/Dining Area	7.68m x 5.16m	25'3" x 16'9"
Bedroom 1	4.47m x 3.67m	14'9" x 12'11"
Bedroom 2	4.10m x 3.32m	13'2" x 10'11"
Total internal area	86.9 sq. m.	935.3 sq. ft.
Balcony/Terrace	16.28m x 1.47m	53'5" x 4'10"

W – Wardrobe
 UC – Utility Cupboard
 FF – Fridge/Freezer
 WD – Washer/Dryer
 S – Storage

*Denotes apartments that are opposite handed/mirror image to the plans drawn. The floor plans provided are intended to only give a general indication of the proposed floor layout, are not drawn to scale and are not intended to form part of any offer, contract, warranty or representation. Measurements are given to the widest point, are approximate and are given as a guide only. They must not be relied upon as a statement or representation of fact. Do not use these measurements for carpet sizes, appliance spaces or items of furniture. Kitchen, bathroom and utility layouts may differ to build, and specific plot sizes and layouts may vary within the same unit type. Window sizes may vary. Please be aware the storage cupboard may include heating and electrical controls, which may reduce the storage available. For further clarification regarding specific individual plots, please ask our Sales Associates.

The Ash

Plot 130



Accommodation

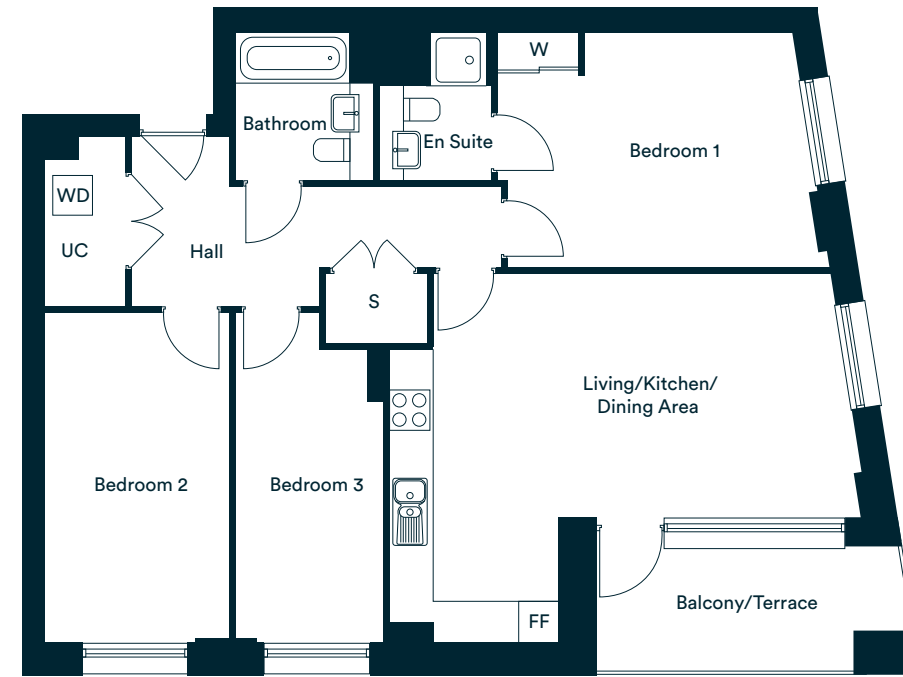
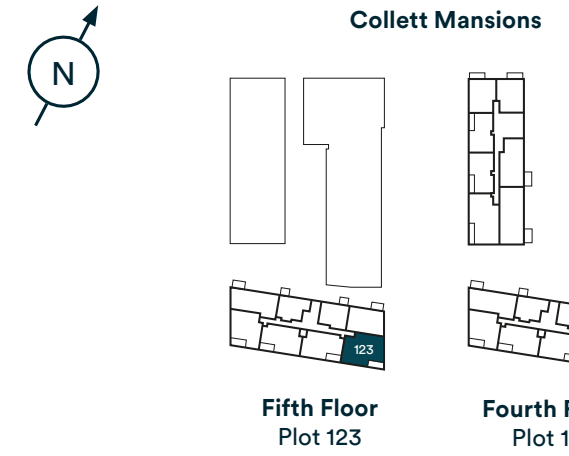
Living/Kitchen/Dining Area	7.09m x 5.57m	23'4" x 18'4"
Bedroom 1	5.15m x 4.40m	16'11" x 14'6"
Bedroom 2	4.44m x 3.60m	14'7" x 11'10"
Total internal area	92.6 sq. m.	996.7 sq. ft.
Balcony/Terrace	16.28m x 1.47m	53'5" x 4'10"

W – Wardrobe
 UC – Utility Cupboard
 FF – Fridge/Freezer
 WD – Washer/Dryer
 S – Storage

*Denotes apartments that are opposite handed/mirror image to the plans drawn. The floor plans provided are intended to only give a general indication of the proposed floor layout, are not drawn to scale and are not intended to form part of any offer, contract, warranty or representation. Measurements are given to the widest point, are approximate and are given as a guide only. They must not be relied upon as a statement or representation of fact. Do not use these measurements for carpet sizes, appliance spaces or items of furniture. Kitchen, bathroom and utility layouts may differ to build, and specific plot sizes and layouts may vary within the same unit type. Window sizes may vary. Please be aware the storage cupboard may include heating and electrical controls, which may reduce the storage available. For further clarification regarding specific individual plots, please ask our Sales Associates.

Three bedroom home The Harris

Plots 85, 91, 99, 107, 115 & 123



Plots 91, 107 & 123

Accommodation

Living/Kitchen/Dining Area	7.01m x 5.47m	23'10" x 11'2"
Bedroom 1	4.79m x 3.50m	15'9" x 11'6"
Bedroom 2	4.96m x 2.75m	16'4" x 9'1"
Bedroom 3	4.96m x 2.19m	16'4" x 7'3"
Total internal area	94.5 sq. m.	1017.1 sq. ft.
Balcony/Terrace	4.71m x 1.85m	15'6" x 6'1"

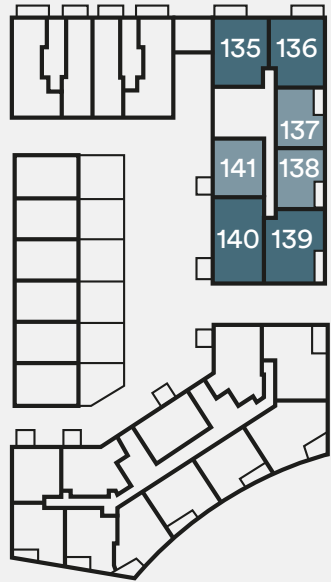
W – Wardrobe
 UC – Utility Cupboard
 FF – Fridge/Freezer
 WD – Washer/Dryer
 S – Storage

*Denotes apartments that are opposite handed/mirror image to the plans drawn. The floor plans provided are intended to only give a general indication of the proposed floor layout, are not drawn to scale and are not intended to form part of any offer, contract, warranty or representation. Measurements are given to the widest point, are approximate and are given as a guide only. They must not be relied upon as a statement or representation of fact. Do not use these measurements for carpet sizes, appliance spaces or items of furniture. Kitchen, bathroom and utility layouts may differ to build, and specific plot sizes and layouts may vary within the same unit type. Window sizes may vary. Please be aware the storage cupboard may include heating and electrical controls, which may reduce the storage available. For further clarification regarding specific individual plots, please ask our Sales Associates.

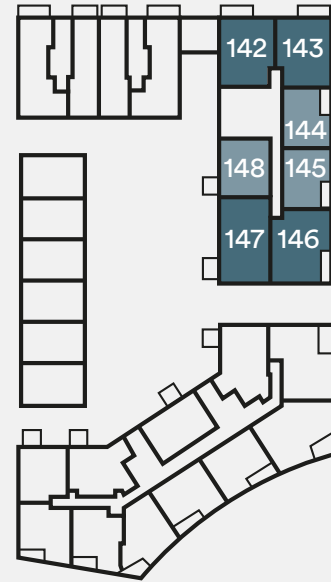
Plot locators Leonard House



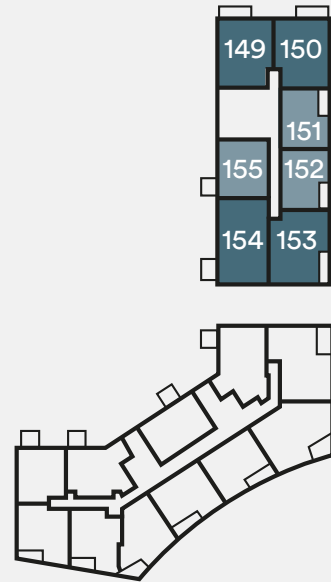
First Floor



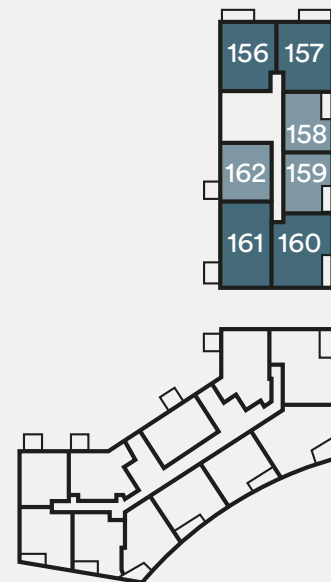
Second Floor



Third Floor



Fourth Floor



Key

- 1 bedroom homes
- 2 bedroom homes

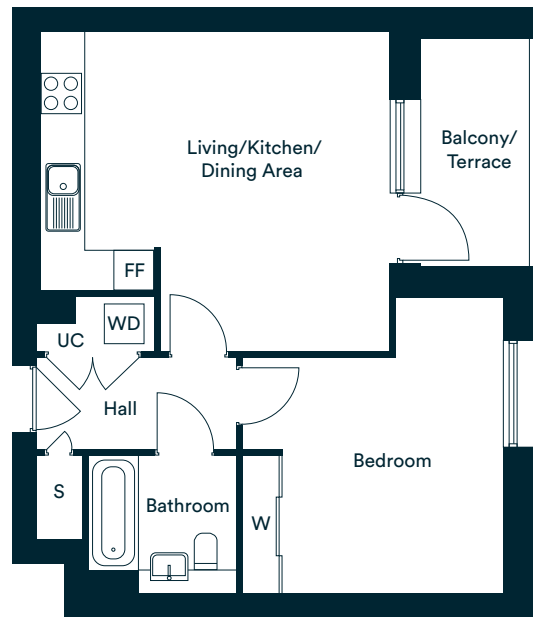


Photography of showhome, indicative only.

The floorplans provided are intended to only give a general indication of the proposed floor layout, are not drawn to scale and are not intended to form part of any offer, contract, warranty or representation. Measurements are given to the widest point, are approximate and are given as a guide only. They must not be relied upon as a statement or representation of fact. Do not use these measurements for carpet sizes, appliance spaces or items of furniture. Kitchen, bathroom and utility layouts may differ to build, and specific plot sizes and layouts may vary within the same unit type. For further clarification regarding specific individual plots, please ask our Sales Associates.

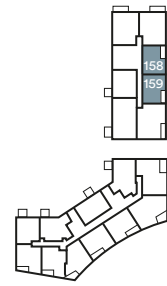
One bedroom homes The Potter

Plots 137, 138*, 144, 145*, 151, 152*, 158 & 159*

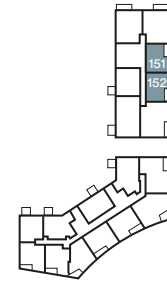


Plots 144, 145, 158, 159

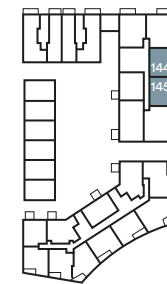
Leonard House



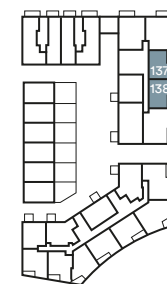
Fourth Floor
Plots 158 & 159



Third Floor
Plots 151 & 152



Second Floor
Plots 144 & 145



First Floor
Plots 137 & 138

Accommodation

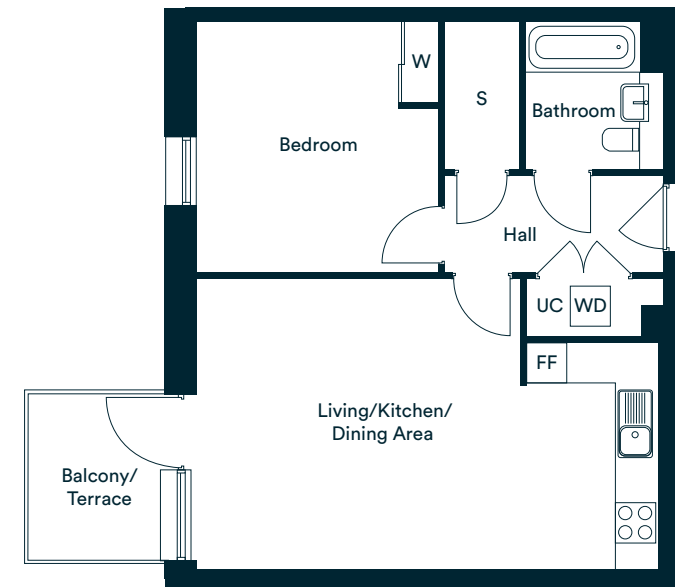
Living/Kitchen/Dining Area	5.19m x 3.86m	17'1" x 15'8"
Bedroom	4.40m x 3.87m	14'6" x 12'9"
Total internal area	50.8 sq. m.	546.80 sq. ft.
Balcony/Terrace	3.38m x 1.62m	11'2" x 5'4"

W – Wardrobe
UC – Utility Cupboard
FF – Fridge/Freezer
WD – Washer/Dryer
S – Storage

*Denotes apartments that are opposite handed/mirror image to the plans drawn. The floor plans provided are intended to only give a general indication of the proposed floor layout, are not drawn to scale and are not intended to form part of any offer, contract, warranty or representation. Measurements are given to the widest point, are approximate and are given as a guide only. They must not be relied upon as a statement or representation of fact. Do not use these measurements for carpet sizes, appliance spaces or items of furniture. Kitchen, bathroom and utility layouts may differ to build, and specific plot sizes and layouts may vary within the same unit type. Window sizes may vary. Please be aware the storage cupboard may include heating and electrical controls, which may reduce the storage available. For further clarification regarding specific individual plots, please ask our Sales Associates.

The Penney

Plots 141, 148, 155 & 162



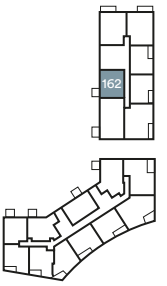
Accommodation

Living/Kitchen/Dining Area	6.87m x 4.31m	22'7" x 15'0"
Bedroom	3.73m x 3.60m	12'3" x 11'10"
Total internal area	56.6 sq. m.	609.2 sq. ft.
Balcony/Terrace	2.47m x 2.05m	8'2" x 6'9"

W – Wardrobe
UC – Utility Cupboard
FF – Fridge/Freezer
WD – Washer/Dryer
S – Storage

*Denotes apartments that are opposite handed/mirror image to the plans drawn. The floor plans provided are intended to only give a general indication of the proposed floor layout, are not drawn to scale and are not intended to form part of any offer, contract, warranty or representation. Measurements are given to the widest point, are approximate and are given as a guide only. They must not be relied upon as a statement or representation of fact. Do not use these measurements for carpet sizes, appliance spaces or items of furniture. Kitchen, bathroom and utility layouts may differ to build, and specific plot sizes and layouts may vary within the same unit type. Window sizes may vary. Please be aware the storage cupboard may include heating and electrical controls, which may reduce the storage available. For further clarification regarding specific individual plots, please ask our Sales Associates.

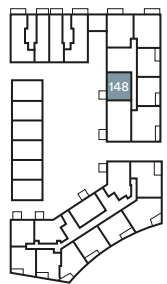
Leonard House



Fourth Floor
Plot 162



Third Floor
Plot 155



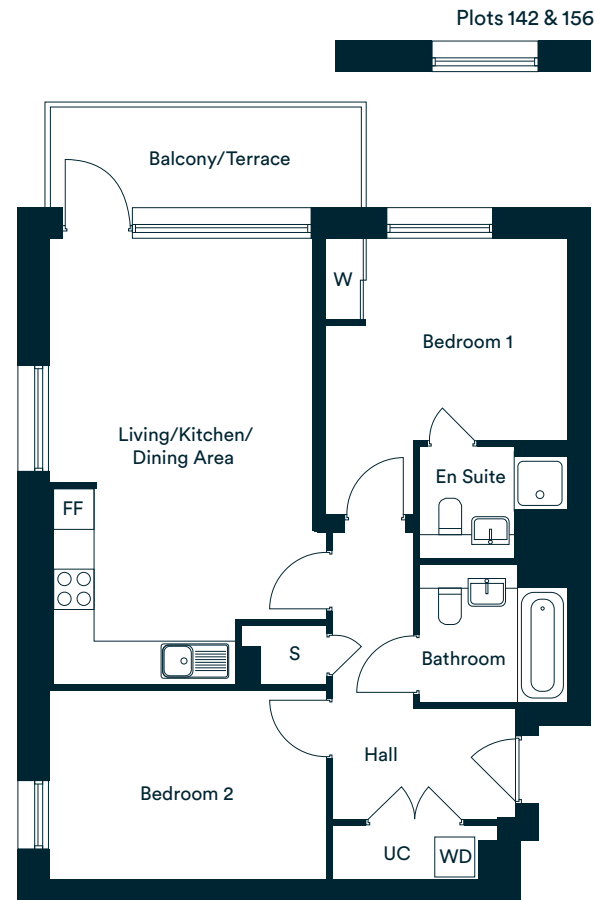
Second Floor
Plot 148



First Floor
Plot 141

Two bedroom homes The Olliver

Plots 135, 142, 149 & 156



Accommodation

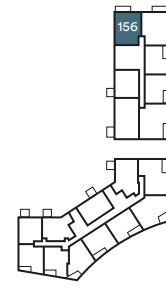
Living/Kitchen/Dining Area	6.63m x 3.92m	21'9" x 12'11"
Bedroom 1	4.09m x 3.59m	13'5" x 11'10"
Bedroom 2	4.12m x 2.80m	13'7" x 9'2"
Total internal area	71.3 sq. m.	767.4 sq. ft.
Balcony/Terrace	4.63m x 1.50m	15'3" x 4'11"

W – Wardrobe
UC – Utility Cupboard
FF – Fridge/Freezer
WD – Washer/Dryer
S – Storage

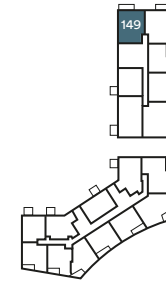
*Denotes apartments that are opposite handed/mirror image to the plans drawn. The floor plans provided are intended to only give a general indication of the proposed floor layout, are not drawn to scale and are not intended to form part of any offer, contract, warranty or representation. Measurements are given to the widest point, are approximate and are given as a guide only. They must not be relied upon as a statement or representation of fact. Do not use these measurements for carpet sizes, appliance spaces or items of furniture. Kitchen, bathroom and utility layouts may differ to build, and specific plot sizes and layouts may vary within the same unit type. Window sizes may vary. Please be aware the storage cupboard may include heating and electrical controls, which may reduce the storage available. For further clarification regarding specific individual plots, please ask our Sales Associates.



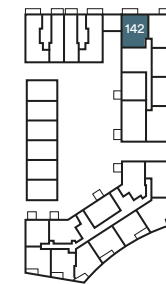
Leonard House



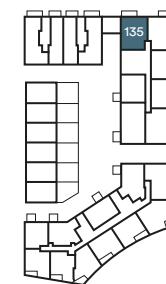
Fourth Floor
Plot 156



Third Floor
Plot 149



Second Floor
Plot 142



First Floor
Plot 135

The Brown

Plots 136, 143, 150 & 157



Accommodation

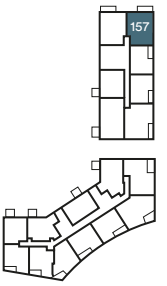
Living/Kitchen/Dining Area	6.35m x 4.06m	20'10" x 13'4"
Bedroom 1	4.09m x 3.59m	13'5" x 11'10"
Bedroom 2	4.12m x 3.16m	13'7" x 10'5"
Total internal area	71.8 sq. m.	772.8 sq. ft.
Balcony/Terrace	4.63m x 1.50m	15'3" x 4'11"

W – Wardrobe
UC – Utility Cupboard
FF – Fridge/Freezer
WD – Washer/Dryer
S – Storage

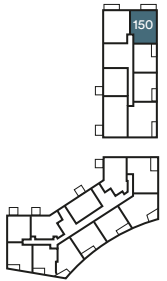
*Denotes apartments that are opposite handed/mirror image to the plans drawn. The floor plans provided are intended to only give a general indication of the proposed floor layout, are not drawn to scale and are not intended to form part of any offer, contract, warranty or representation. Measurements are given to the widest point, are approximate and are given as a guide only. They must not be relied upon as a statement or representation of fact. Do not use these measurements for carpet sizes, appliance spaces or items of furniture. Kitchen, bathroom and utility layouts may differ to build, and specific plot sizes and layouts may vary within the same unit type. Window sizes may vary. Please be aware the storage cupboard may include heating and electrical controls, which may reduce the storage available. For further clarification regarding specific individual plots, please ask our Sales Associates.



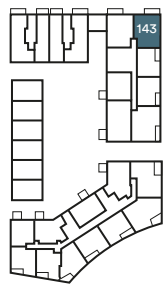
Leonard House



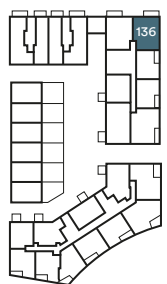
Fourth Floor
Plot 157



Third Floor
Plot 150



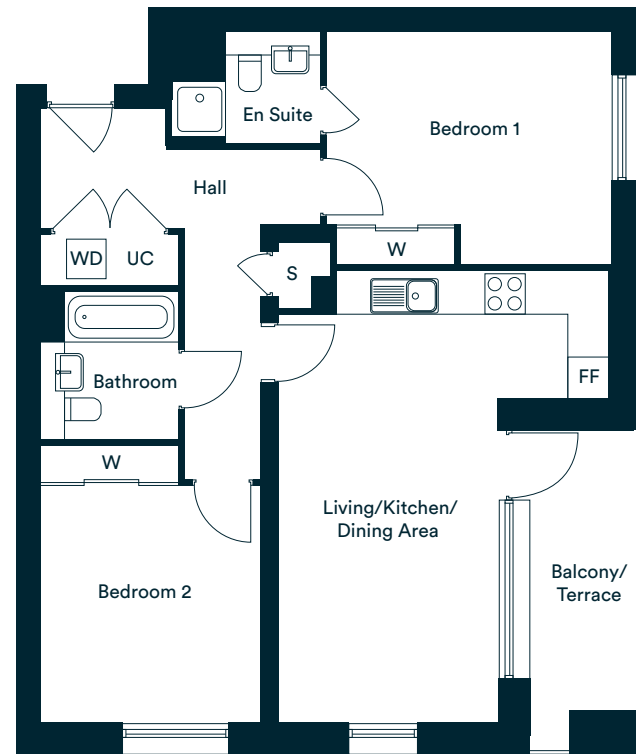
Second Floor
Plot 143



First Floor
Plot 136

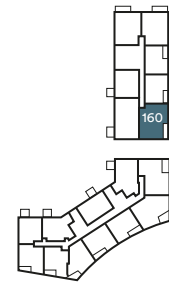
The Bowie

Plots 139, 146, 153 & 160

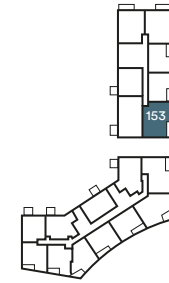


Plots 146 & 160

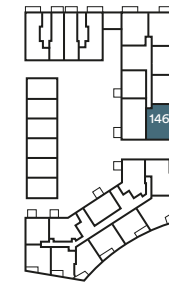
Leonard House



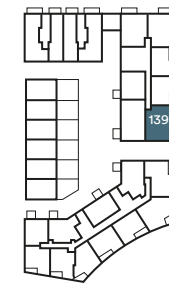
Fourth Floor
Plot 160



Third Floor
Plot 153



Second Floor
Plot 146



First Floor
Plot 139

Accommodation

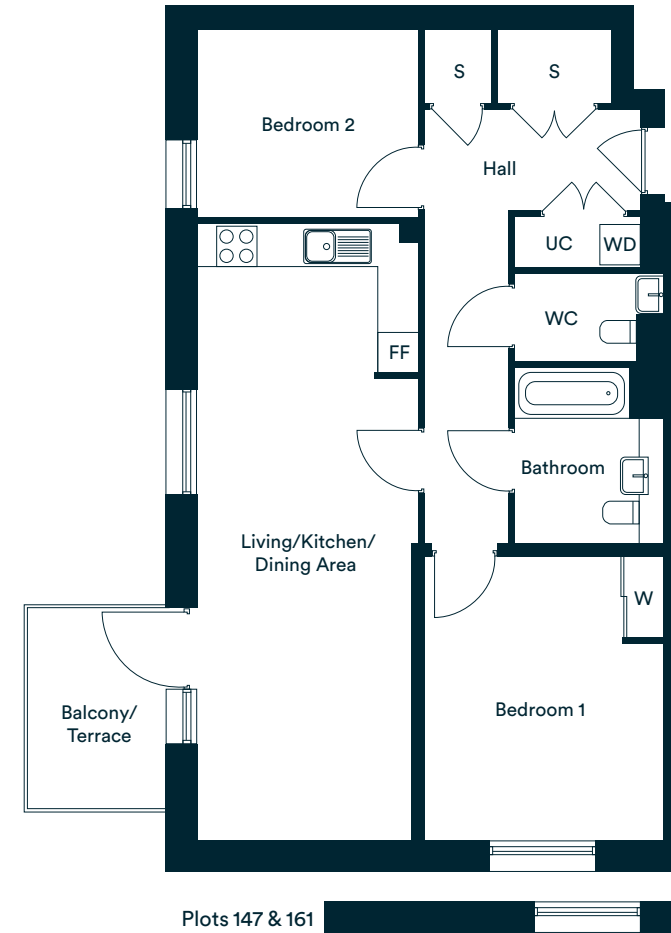
Living/Kitchen/Dining Area	6.72m x 4.89m	22'1" x 16'1"
Bedroom 1	4.24m x 3.47m	13'11" x 11'5"
Bedroom 2	4.12m x 3.27m	13'7" x 10'9"
Total internal area	77.2 sq. m.	830.9 sq. ft.
Balcony/Terrace	4.77m x 1.62m	15'8" x 5'4"

W – Wardrobe
 UC – Utility Cupboard
 FF – Fridge/Freezer
 WD – Washer/Dryer
 S – Storage

*Denotes apartments that are opposite handed/mirror image to the plans drawn. The floor plans provided are intended to only give a general indication of the proposed floor layout, are not drawn to scale and are not intended to form part of any offer, contract, warranty or representation. Measurements are given to the widest point, are approximate and are given as a guide only. They must not be relied upon as a statement or representation of fact. Do not use these measurements for carpet sizes, appliance spaces or items of furniture. Kitchen, bathroom and utility layouts may differ to build, and specific plot sizes and layouts may vary within the same unit type. Window sizes may vary. Please be aware the storage cupboard may include heating and electrical controls, which may reduce the storage available. For further clarification regarding specific individual plots, please ask our Sales Associates.

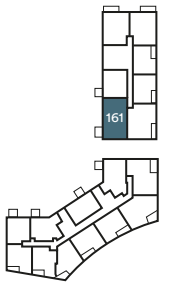
The Hamilton

Plots 140, 147, 154 & 161

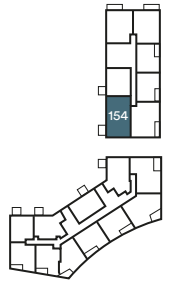


Plots 147 & 161

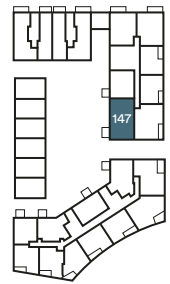
Leonard House



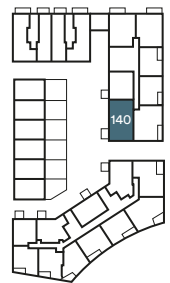
Fourth Floor
Plot 161



Third Floor
Plot 154



Second Floor
Plot 147



First Floor
Plot 140

Accommodation

Living/Kitchen/Dining Area	9.18m x 3.19m	30'2" x 10'6"
Bedroom 1	4.41m x 3.55m	14'6" x 11'8"
Bedroom 2	3.29m x 2.80m	10'10" x 9'2"
Total internal area	82.4 sq. m.	885.9 sq. ft.
Balcony/Terrace	2.99m x 2.05m	9'10" x 6'9"

W – Wardrobe
 UC – Utility Cupboard
 FF – Fridge/Freezer
 WD – Washer/Dryer
 S – Storage

*Denotes apartments that are opposite handed/mirror image to the plans drawn. The floor plans provided are intended to only give a general indication of the proposed floor layout, are not drawn to scale and are not intended to form part of any offer, contract, warranty or representation. Measurements are given to the widest point, are approximate and are given as a guide only. They must not be relied upon as a statement or representation of fact. Do not use these measurements for carpet sizes, appliance spaces or items of furniture. Kitchen, bathroom and utility layouts may differ to build, and specific plot sizes and layouts may vary within the same unit type. Window sizes may vary. Please be aware the storage cupboard may include heating and electrical controls, which may reduce the storage available. For further clarification regarding specific individual plots, please ask our Sales Associates.



Invest for the future
and own your home

L&Q offer an extensive range of Shared Ownership homes across the country. We can help you buy a home in a way that works for you.

Shared Ownership makes it possible to own your home- even if you feel priced out of the property market. It's an affordable home ownership scheme designed as a stepping-stone to outright ownership if you can't afford to buy a home on the open market

To find out more visit
lqhomes.com/shared-ownership



Investing in homes *and neighbourhoods*

At L&Q we believe passionately that people's health, security and happiness depend on where they live.

With nearly 60 years experience, we have what it takes to do things right. We aim to deliver great service to every customer, every time, and we're always looking for ways to improve ourselves.

Our relationships are built on trust, transparency and fairness and we're there when we're needed – locally responsive and working hard to keep the communities we serve safe and vibrant.

Because our social purpose is at the core of what we do, we reinvest all of the money that we make into our homes and services.

We create better places to live by delivering homes, neighbourhoods and housing services that people can afford.

We are L&Q.

Buying a Shared Ownership home with L&Q

With Shared Ownership you start by buying a share in your home and then progress to full ownership by buying more shares. Your deposit will be 5% to 10% of the share you are buying. You pay a mortgage on the share you own and a rent to L&Q on the share you don't own.

Are some applicants prioritised?

Some developments may initially be reserved for those who live or work locally, but in most cases the development is open to everyone so please register if you are interested. You can find out more about the development eligibility criteria on our website or by speaking to the Sales Team.

Is Shared Ownership really affordable?

The best way to find out if Shared Ownership is affordable for you is to speak to an independent mortgage advisor about your finances. They will help you determine what is affordable and help you make the right decision. You will need a deposit and will also need to cover the costs of buying a home. These costs include things like the reservation fee, mortgage valuation fee, removal costs and utility connection charges.

Can I buy more shares in my home?

Yes, this process is known as staircasing. You can also sell the share you own at any time, either via the L&Q Resales team or on the open market.

Am I Eligible?

To buy a home under the Shared Ownership scheme you must meet these basic requirements:

- have a combined annual household income under £80,000, or £90,000 in London
- not own a property, or part of a property, at the time of completing on your purchase
- be 18 years or older and be able to obtain a mortgage

Complete our Shared Ownership Application form to confirm your eligibility.

If you have any questions about the application form please contact the Homebuy Application Team at applications@lqgroup.org.uk or call **0300 456 9997** opt 1, Monday to Friday 9am-5pm

You can learn all about Shared Ownership at lqhomes.com/shared-ownership

Getting started with L&Q Shared Ownership



Step 1: Confirm your eligibility

Complete the online L&Q Shared Ownership Application form at lqhomes.com/apply. If you're purchasing a home with a friend or partner, remember to complete the Joint Application section of the form.



Step 2: Reserve your home

Browse our website and find a home that's right for you. Book a viewing and visit the show home, once you've chosen your home reserve it with a payment of £500. Homes will be allocated based on priority.



Step 3: We make you an offer

Once you have paid your reservation fee, we will verify your identity. If the result of this check is satisfactory, we'll contact you to make an offer of a home.

Buying a Shared Ownership home

After we have made you an offer



Step 1: Meet a mortgage advisor

When you accept the offer, it will be subject to a financial assessment with an independent mortgage advisor (IMA). They will assess what share you can afford to purchase and arrange your mortgage application for you.



Step 2: You appoint a solicitor

Everyone who buys a home needs to appoint a conveyancing solicitor to work on their behalf. We can provide details of solicitors who specialise in shared ownership.



Step 3: We exchange contracts

The Memorandum of Sale (MOS) will give a date by which to exchange contracts. This makes your intention to buy a home through L&Q a legally binding agreement.



Step 4: Completion day arrives!

Your mortgage lender will give your solicitor the money to buy your home and complete the sale. Congratulations on purchasing your new home!



Step 5: Time to collect your keys

We will make arrangements to meet you at your home and hand over your keys. We will also walk you through your new home and talk you through your Home User Guide.

We're here and ready to help

When you're ready to move in, L&Q will give you a personal introduction to your new L&Q home.

The L&Q new homes warranty

We will demonstrate how to operate your appliances and heating and talk you through any special features, all of which will be detailed in your Home User Guide.

We are confident that you will be delighted with your new L&Q home, but for added peace of mind, all of our homes also come with an L&Q new homes warranty.

This lasts for two years from the date of legal completion. For the 2-year period, we guarantee items supplied as part of your new home, covering repairs needed due to faulty workmanship or materials. The NHBC Buildmark cover is valid for 12 years from the date the building was finished.

Your sales negotiator can provide you with more details on the L&Q warranty and NHBC Buildmark cover. You can also access the full terms and conditions on our website: lqgroup.org.uk



A selection of other L&Q developments



L&Q at Beam Park
Rainham
lqhomes.com/beampark



L&Q at Alexandra Gate
Haringey
lqhomes.com/alexandragate



Prime Point
Greenwich
lqhomes.com/primepoint

Disclaimer


All information in this document is correct at the time of publication going to print January 2025. The contents of this brochure should not be considered material information for the purposes of purchasing a home. No image or photograph (whether computer generated or otherwise) is taken as a statement or representation of fact, and no image or photograph (whether computer generated or otherwise) forms part of any offer, contract, warranty or representation. Your home is at risk if you fail to keep up repayments on a mortgage, rent or other loan secured on it. Please make sure you can afford the repayments before you take out a mortgage.

Registered office: L&Q, 29-35 West Ham Lane, Stratford, London E15 4PH. Homes & Communities Agency L4517. Registered Society 30441R Exempt charity.

L&Q

Barking Riverside

 lqhomes.com/barkingriverside

 020 8617 1747

 barkingriverside@lqgroup.org.uk