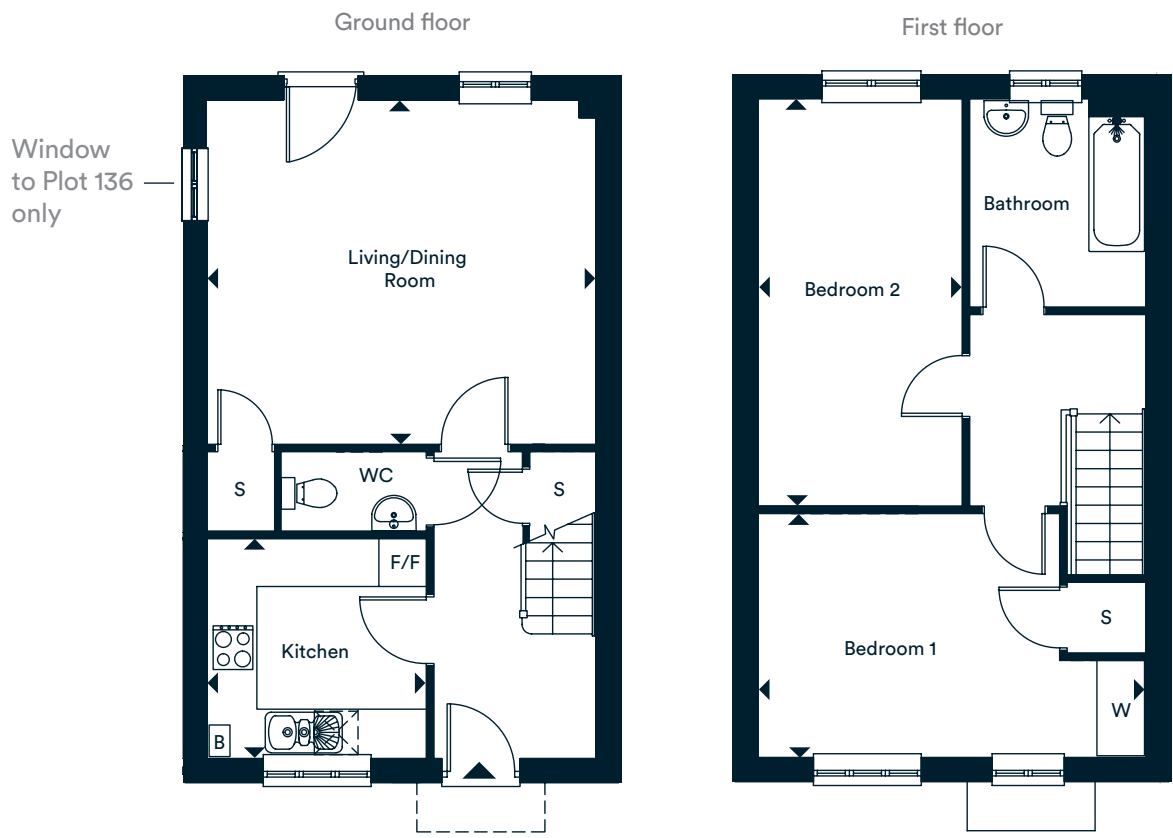


Two bedroom

Plots 53, 54*, 55, 56*, 62, 136*, 137

*Denotes houses that are handed opposite to the plans drawn



Living / Dining Room	4.85m x 4.22m	15' 9" x 13' 8"
Kitchen	2.75m x 2.74m	9' 0" x 8' 10"
Bedroom 1	4.85m x 3.05m	15' 9" x 10' 0"
Bedroom 2	5.11m x 2.55m	16' 8" x 8' 4"
Total	80.0 m²	861 ft²

- WC** - Cloakroom
- W** - Wardrobe
- F/F** - Fridge/Freezer
- B** - Boiler
- S** - Storage

The floor plans provided are intended to only give a general indication of the proposed floor layout, are not drawn to scale and are not intended to form part of any offer, contract, warranty or representation. Measurements are given to the widest point, are approximate and are given as a guide only. They must not be relied upon as a statement or representation of fact. Do not use these measurements for carpet sizes, appliance spaces or items of furniture. Kitchen, bathroom and utility layouts may differ to build, and specific plot sizes and layouts may vary within the same unit type. For further clarification regarding specific individual plots, please ask our Sales Advisors.

L&Q at Brook View
Amphill Road, Wixams, MK45 3JJ

@ brookview@lqgroup.org.uk

☎ 0333 003 2326

🌐 lqhomes.com/brookview

The logo consists of the letters 'L&Q' in a bold, black, sans-serif font, centered on a bright yellow rectangular background.

Disclaimer

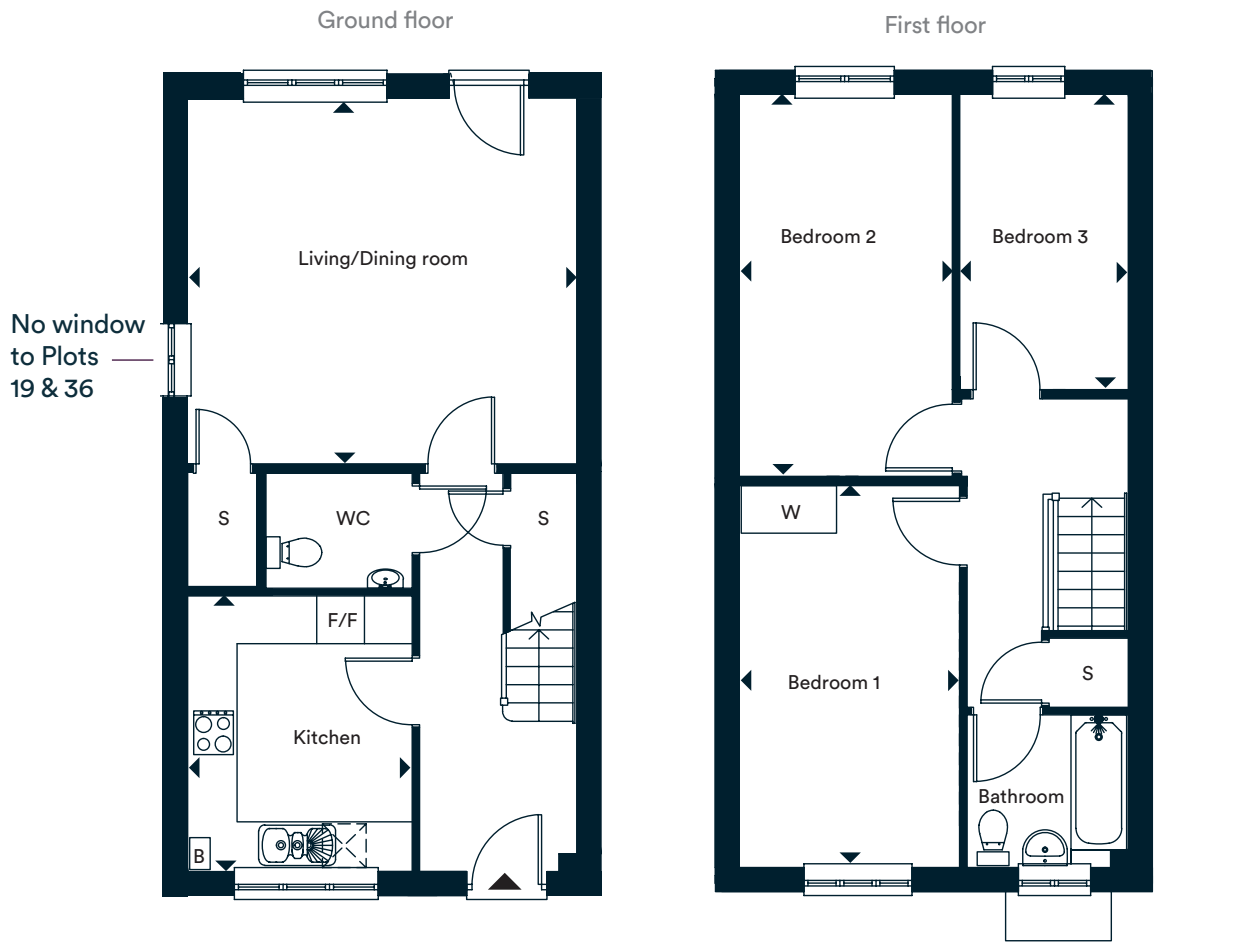
All information in this document is correct at the time of publication going to print September 2020. The contents of this brochure should not be considered material information for the purposes of purchasing a home. No image or photograph (whether computer generated or otherwise) is taken as a statement or representation of fact, and no image or photograph (whether computer generated or otherwise) forms part of any offer, contract, warranty or representation. Registered office: L&Q, 29-35 West Ham Lane, Stratford, London E15 4PH. Homes & Communities Agency L4517. Registered Society 30441R Exempt charity. Details correct at the time of going to print September 2020. Your home is at risk if you fail to keep up repayments on a mortgage, rent or other loan secured on it. Please make sure you can afford the repayments before you take out a mortgage.

Registered office: L&Q, 29-35 West Ham Lane, Stratford, London E15 4PH. Homes & Communities Agency L4517. Registered Society 30441R Exempt charity. Details correct at the time of going to print September 2020. Your home is at risk if you fail to keep up repayments on a mortgage, rent or other loan secured on it. Please make sure you can afford the repayments before you take out a mortgage.

Three bedroom

Plots 18, 19*, 35, 36*, 44*

*Denotes houses that are handed opposite to the plans drawn



Living / Dining Room	4.85m x 4.58m	15' 9" x 15' 0"
Kitchen	3.45m x 2.80m	11' 3" x 9' 2"
Bedroom 1	4.79m x 2.75m	15' 7" x 9' 0"
Bedroom 2	4.79m x 2.66m	15' 7" x 8' 7"
Bedroom 3	3.70m x 2.10m	12' 1" x 6' 9"
Total	94.0 m²	1,012 ft²

WC - Cloakroom
W - Wardrobe
F/F - Fridge/Freezer
B - Boiler
S - Storage

The floor plans provided are intended to only give a general indication of the proposed floor layout, are not drawn to scale and are not intended to form part of any offer, contract, warranty or representation. Measurements are given to the widest point, are approximate and are given as a guide only. They must not be relied upon as a statement or representation of fact. Do not use these measurements for carpet sizes, appliance spaces or items of furniture. Kitchen, bathroom and utility layouts may differ to build, and specific plot sizes and layouts may vary within the same unit type. For further clarification regarding specific individual plots, please ask our Sales Advisors.

L&Q at Brook View
Amphill Road, Wixams, MK45 3JJ

@ brookview@lqgroup.org.uk

☎ 0333 003 2326

🌐 lqhomes.com/brookview

The logo consists of the letters 'L&Q' in a bold, white, sans-serif font, centered on a yellow rectangular background.

Disclaimer

All information in this document is correct at the time of publication going to print September 2020. The contents of this brochure should not be considered material information for the purposes of purchasing a home. No image or photograph (whether computer generated or otherwise) is taken as a statement or representation of fact, and no image or photograph (whether computer generated or otherwise) forms part of any offer, contract, warranty or representation. Registered office: L&Q, 29-35 West Ham Lane, Stratford, London E15 4PH. Homes & Communities Agency L4517. Registered Society 30441R Exempt charity. Details correct at the time of going to print September 2020. Your home is at risk if you fail to keep up repayments on a mortgage, rent or other loan secured on it. Please make sure you can afford the repayments before you take out a mortgage.

Registered office: L&Q, 29-35 West Ham Lane, Stratford, London E15 4PH. Homes & Communities Agency L4517. Registered Society 30441R Exempt charity. Details correct at the time of going to print September 2020. Your home is at risk if you fail to keep up repayments on a mortgage, rent or other loan secured on it. Please make sure you can afford the repayments before you take out a mortgage.

Three bedroom

Plot 63*

*Denotes houses that are handed opposite to the plans drawn



Living / Dining Room	4.85m x 4.58m	16' 0" x 15' 0"
Kitchen	3.69m x 2.80m	12' 1" x 9' 2"
Bedroom 1	4.79m x 2.60m	15' 7" x 8' 5"
Bedroom 2	4.79m x 2.58m	15' 7" x 8' 5"
Bedroom 3	3.70m x 2.18m	12' 1" x 7' 2"
Total	94.0 m²	1,012 ft²

- WC** - Cloakroom
- W** - Wardrobe
- F/F** - Fridge/Freezer
- B** - Boiler
- S** - Storage

The floor plans provided are intended to only give a general indication of the proposed floor layout, are not drawn to scale and are not intended to form part of any offer, contract, warranty or representation. Measurements are given to the widest point, are approximate and are given as a guide only. They must not be relied upon as a statement or representation of fact. Do not use these measurements for carpet sizes, appliance spaces or items of furniture. Kitchen, bathroom and utility layouts may differ to build, and specific plot sizes and layouts may vary within the same unit type. For further clarification regarding specific individual plots, please ask our Sales Advisors.

L&Q at Brook View
Amphill Road, Wixams, MK45 3JJ

@ brookview@lqgroup.org.uk

☎ 0333 003 2326

🌐 lqhomes.com/brookview

The logo consists of the letters 'L&Q' in a bold, black, sans-serif font, centered on a bright yellow rectangular background.

Disclaimer

All information in this document is correct at the time of publication going to print October 2020. The contents of this brochure should not be considered material information for the purposes of purchasing a home. No image or photograph (whether computer generated or otherwise) is taken as a statement or representation of fact, and no image or photograph (whether computer generated or otherwise) forms part of any offer, contract, warranty or representation. Registered office: L&Q, 29-35 West Ham Lane, Stratford, London E15 4PH. Homes & Communities Agency L4517. Registered Society 30441R Exempt charity. Details correct at the time of going to print September 2020. Your home is at risk if you fail to keep up repayments on a mortgage, rent or other loan secured on it. Please make sure you can afford the repayments before you take out a mortgage.

Registered office: L&Q, 29-35 West Ham Lane, Stratford, London E15 4PH. Homes & Communities Agency L4517. Registered Society 30441R Exempt charity. Details correct at the time of going to print October 2020. Your home is at risk if you fail to keep up repayments on a mortgage, rent or other loan secured on it. Please make sure you can afford the repayments before you take out a mortgage.