

# L&Q at HUNTLEY WHARF

Discovery House Siteplan and Floorplan Brochure



L&Q

CGI is indicative of L&Q at Huntley Wharf

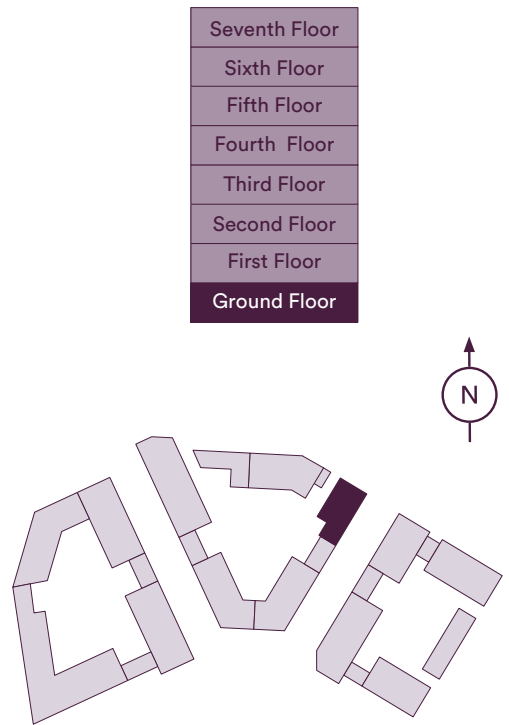


# Siteplan



Ground Floor

Plot 418



Plot 418 - 2 Bedroom

Living/Dining/Kitchen	6.39m x 3.62m	20' 11" x 11' 10"
Bedroom 1	5.24m x 2.87m	17' 2" x 9' 4"
Bedroom 2	2.55m x 4.23m	8' 4" x 13' 10"
Total Internal Area	54.8m²	589.4ft²
Terrace	37.9m²	407.6ft²

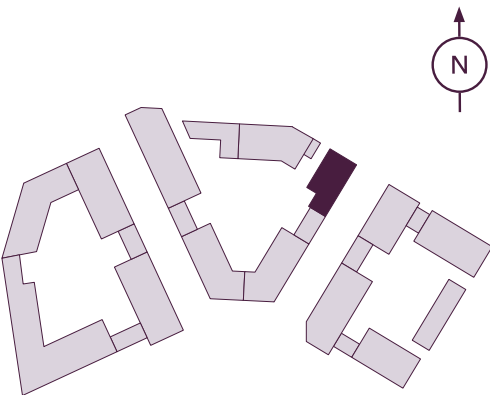
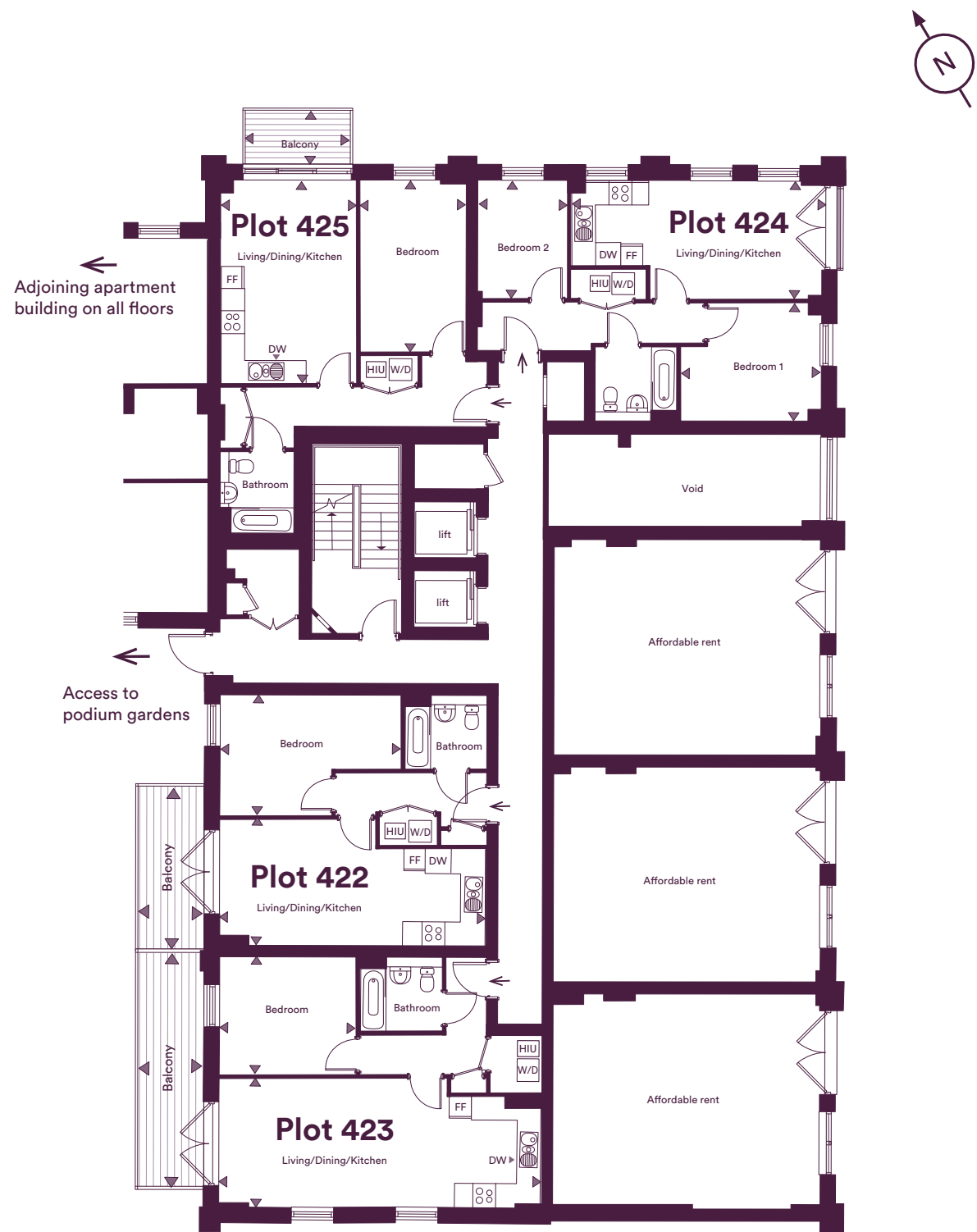
The floor plans provided are intended to only give a general indication of the proposed floor layout, are not drawn to scale and are not intended to form part of any offer, contract, warranty or representation. Measurements are given to the widest point, are approximate and are given as a guide only. They must not be relied upon as a statement or representation of fact. Do not use these measurements for carpet sizes, appliance spaces or items of furniture. Kitchen, bathroom and utility layouts may differ to build, and specific plot sizes and layouts may vary within the same unit type. For further clarification regarding specific individual plots, please ask our Sales Associates.

DW - Dishwasher | FF - Fridge/Freezer | HIU - Heat Interface Unit | W/D - Washer/Dryer



# First Floor

Plots 422, 423, 424 & 425



## Plot 422 - 1 Bedroom Apartment

Living/Dining/Kitchen	7.27m x 3.44m	23' 10" x 14' 6"
Bedroom	4.92m x 3.93m	16' 1" x 12' 10"
<b>Total Internal Area</b>	<b>45.9m<sup>2</sup></b>	<b>494.3ft<sup>2</sup></b>
Balcony	9.1m <sup>2</sup>	98ft <sup>2</sup>

## Plot 423 - 1 Bedroom Apartment

Living/Dining/Kitchen	8.67m x 3.54m	28' 5" x 11' 7"
Bedroom	3.73m x 3.19m	12' 2" x 10' 5"
<b>Total Internal Area</b>	<b>52.5m<sup>2</sup></b>	<b>502.6ft<sup>2</sup></b>
Balcony	12.8m <sup>2</sup>	138ft <sup>2</sup>

## Plot 424 - 2 Bedroom Apartment

Living/Dining/Kitchen	6.77m x 3.24m	22' 2" x 10' 8"
Bedroom 1	3.23m x 3.82m	10' 7" x 12' 6"
Bedroom 2	2.47m x 3.24m	8' 1" x 10' 8"
<b>Total Internal Area</b>	<b>50.9m<sup>2</sup></b>	<b>547.9ft<sup>2</sup></b>
Balcony	3.5m <sup>2</sup>	37.7ft <sup>2</sup>

## Plot 425 - 1 Bedroom Apartment

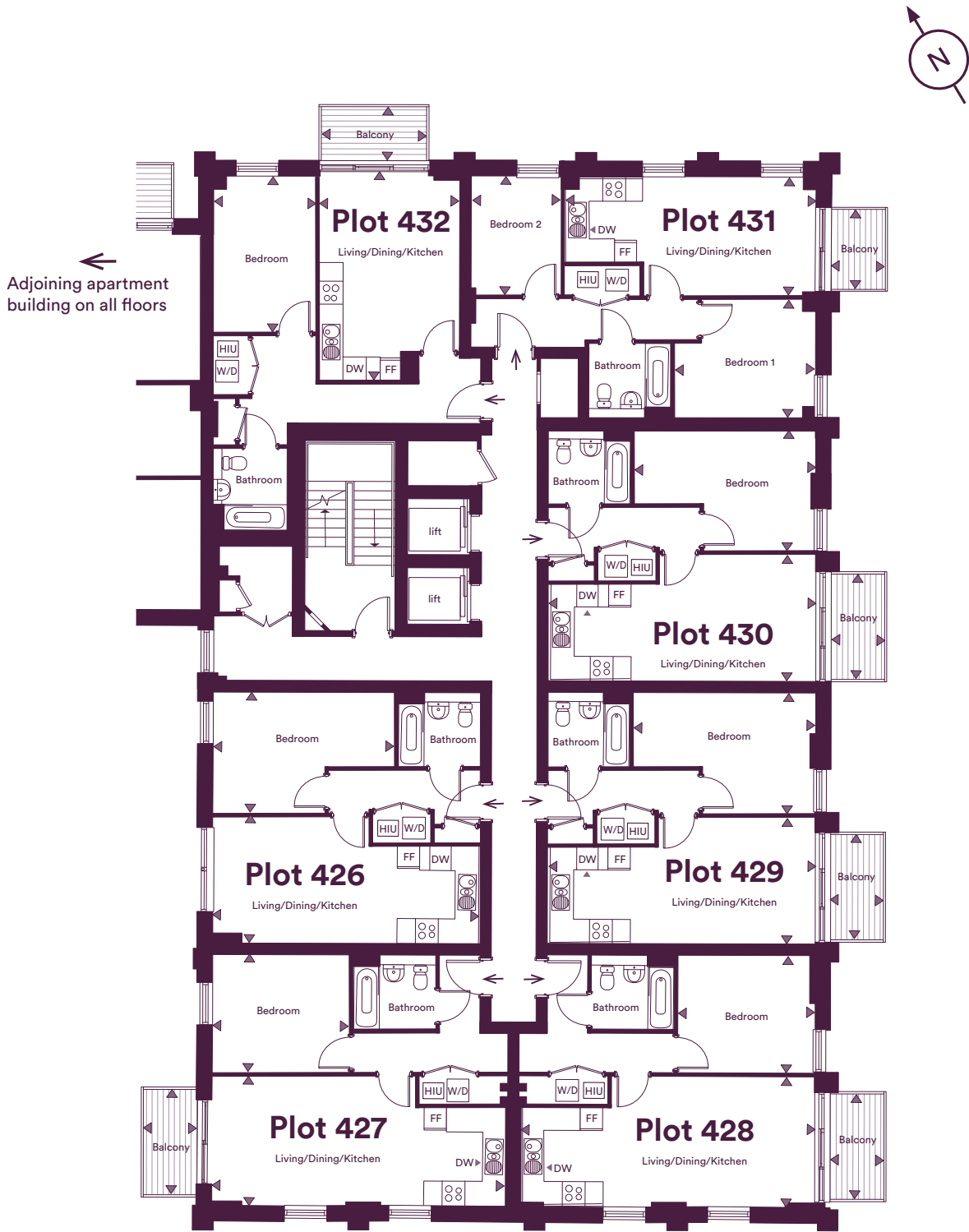
Living/Dining/Kitchen	5.50m x 3.65m	18' 1" x 11' 12"
Bedroom	4.68m x 2.97m	15' 4" x 9' 9"
<b>Total Internal Area</b>	<b>48.1m<sup>2</sup></b>	<b>518.1ft<sup>2</sup></b>
Balcony	4.3m <sup>2</sup>	46.1ft <sup>2</sup>

DW - Dishwasher | FF - Fridge/Freezer | HIU - Heat Interface Unit | W/D - Washer/Dryer

The floor plans provided are intended to only give a general indication of the proposed floor layout, are not drawn to scale and are not intended to form part of any offer, contract, warranty or representation. Measurements are given to the widest point, are approximate and are given as a guide only. They must not be relied upon as a statement or representation of fact. Do not use these measurements for carpet sizes, appliance spaces or items of furniture. Kitchen, bathroom and utility layouts may differ to build, and specific plot sizes and layouts may vary within the same unit type. For further clarification regarding specific individual plots, please ask our Sales Associates.

# Second Floor

Plots 426, 427, 428, 429, 430, 431 & 432



## Plot 426 - 1 Bedroom Apartment

Living/Dining/Kitchen	7.24m x 3.44m	23' 9" x 11' 3"
Bedroom	4.92m x 3.93m	16' 1" x 12' 11"
Total Internal Area	45.9m²	494.3ft²

## Plot 427 - 1 Bedroom Apartment

Living/Dining/Kitchen	7.99m x 3.41m	26' 2" x 11' 2"
Bedroom	3.73m x 3.19m	12' 3" x 10' 6"
Total Internal Area	49.3m²	530.2ft²
Balcony	4.4m²	47.4ft²

## Plot 428 - 1 Bedroom Apartment

Living/Dining/Kitchen	7.99m x 3.41m	26' 2" x 11' 2"
Bedroom	3.73m x 3.19m	12' 3" x 10' 6"
Total Internal Area	49.3m²	530.2ft²
Balcony	4.4m²	47.4ft²

## Plot 429 - 1 Bedroom Apartment

Living/Dining/Kitchen	7.24m x 3.44m	23' 9" x 11' 3"
Bedroom	4.92m x 3.30m	16' 2" x 10' 8"
Total Internal Area	45.9m²	494.3ft²
Balcony	4.4m²	47.4ft²

## Plot 430 - 1 Bedroom Apartment

Living/Dining/Kitchen	7.24m x 3.44m	23' 9" x 11' 3"
Bedroom	4.92m x 3.30m	16' 2" x 10' 8"
Total Internal Area	45.9m²	494.3ft²
Balcony	4.4m²	47.4ft²

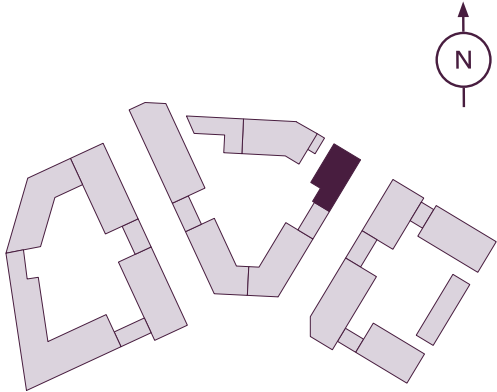
## Plot 431 - 2 Bedroom Apartment

Living/Dining/Kitchen	6.77m x 3.24m	22' 3" x 10' 8"
Bedroom 1	3.23m x 3.82m	10' 7" x 12' 6"
Bedroom 2	2.47m x 3.24m	8' 1" x 10' 8"
Total Internal Area	50.9m²	547.9ft²
Balcony	3.5m²	37.7ft²

## Plot 432 - 1 Bedroom Apartment

Living/Dining/Kitchen	5.52m x 3.82m	18' 1" x 12' 6"
Bedroom	4.25m x 2.80m	13' 11" x 9' 2"
Total Internal Area	50.9m²	547.9ft²
Balcony	4.3m²	46.1ft²

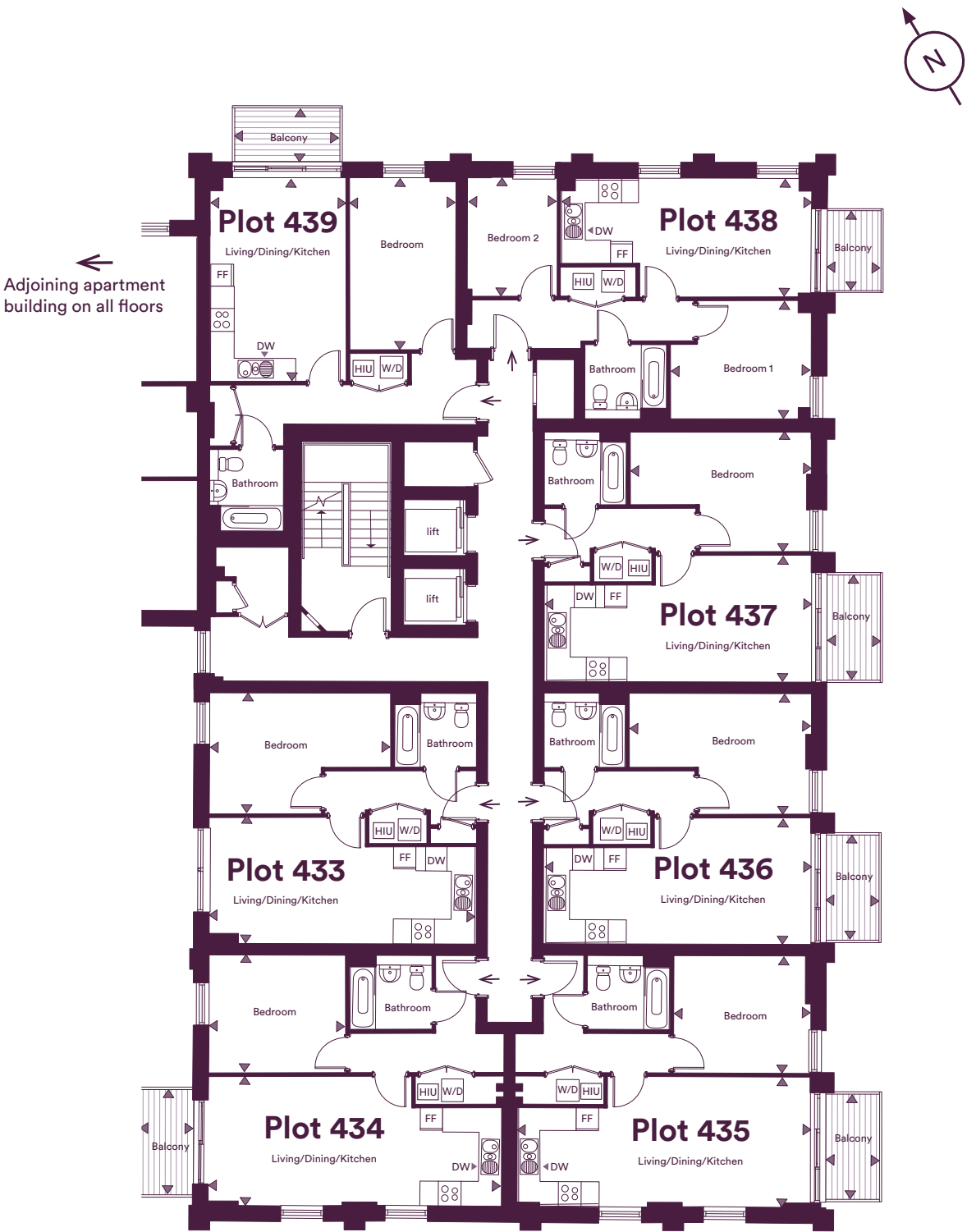
Seventh Floor
Sixth Floor
Fifth Floor
Fourth Floor
Third Floor
Second Floor
First Floor
Ground Floor



The floor plans provided are intended to only give a general indication of the proposed floor layout, are not drawn to scale and are not intended to form part of any offer, contract, warranty or representation. Measurements are given to the widest point, are approximate and are given as a guide only. They must not be relied upon as a statement or representation of fact. Do not use these measurements for carpet sizes, appliance spaces or items of furniture. Kitchen, bathroom and utility layouts may differ to build, and specific plot sizes and layouts may vary within the same unit type. For further clarification regarding specific individual plots, please ask our Sales Associates.

# Third Floor

Plot 433, 434, 435, 436, 437, 438 & 439



## Plot 433 - 1 Bedroom Apartment

Living/Dining/Kitchen	7.24m x 3.44m	23' 9" x 11' 3"
Bedroom	4.92m x 3.93m	16' 1" x 12' 11"
Total Internal Area	45.9m <sup>2</sup>	494.3ft <sup>2</sup>

## Plot 434 - 1 Bedroom Apartment

Living/Dining/Kitchen	7.99m x 3.41m	26' 2" x 11' 2"
Bedroom	3.73m x 3.19m	12' 3" x 10' 6"
Total Internal Area	49.3m <sup>2</sup>	530.2ft <sup>2</sup>
Balcony	4.4m <sup>2</sup>	47.4ft <sup>2</sup>

## Plot 435 - 1 Bedroom Apartment

Living/Dining/Kitchen	7.99m x 3.41m	26' 2" x 11' 2"
Bedroom	3.73m x 3.19m	12' 3" x 10' 6"
Total Internal Area	49.3m <sup>2</sup>	530.2ft <sup>2</sup>
Balcony	4.4m <sup>2</sup>	47.4ft <sup>2</sup>

## Plot 436 - 1 Bedroom Apartment

Living/Dining/Kitchen	7.24m x 3.44m	23' 9" x 11' 3"
Bedroom	4.92m x 3.30m	16' 2" x 10' 8"
Total Internal Area	45.9m <sup>2</sup>	494.3ft <sup>2</sup>
Balcony	4.4m <sup>2</sup>	47.4ft <sup>2</sup>

## Plot 437 - 1 Bedroom Apartment

Living/Dining/Kitchen	7.24m x 3.44m	23' 9" x 11' 3"
Bedroom	4.92m x 3.30m	16' 2" x 10' 8"
Total Internal Area	45.9m <sup>2</sup>	494.3ft <sup>2</sup>
Balcony	4.4m <sup>2</sup>	47.4ft <sup>2</sup>

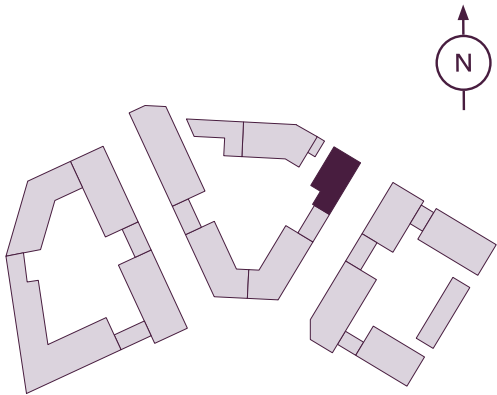
## Plot 438 - 2 Bedroom Apartment

Living/Dining/Kitchen	6.77m x 3.24m	22' 3" x 10' 8"
Bedroom 1	3.23m x 3.82m	10' 7" x 12' 6"
Bedroom 2	2.47m x 3.24m	8' 1" x 10' 8"
Total Internal Area	50.9m <sup>2</sup>	547.9ft <sup>2</sup>
Balcony	3.5m <sup>2</sup>	37.7ft <sup>2</sup>

## Plot 439 - 1 Bedroom Apartment

Living/Dining/Kitchen	5.50m x 3.65m	18' 1" x 11' 12"
Bedroom	4.68m x 2.97m	15' 4" x 9' 9"
Total Internal Area	48.1m <sup>2</sup>	518.1ft <sup>2</sup>
Balcony	4.3m <sup>2</sup>	46.1ft <sup>2</sup>

Seventh Floor
Sixth Floor
Fifth Floor
Fourth Floor
Third Floor
Second Floor
First Floor
Ground Floor

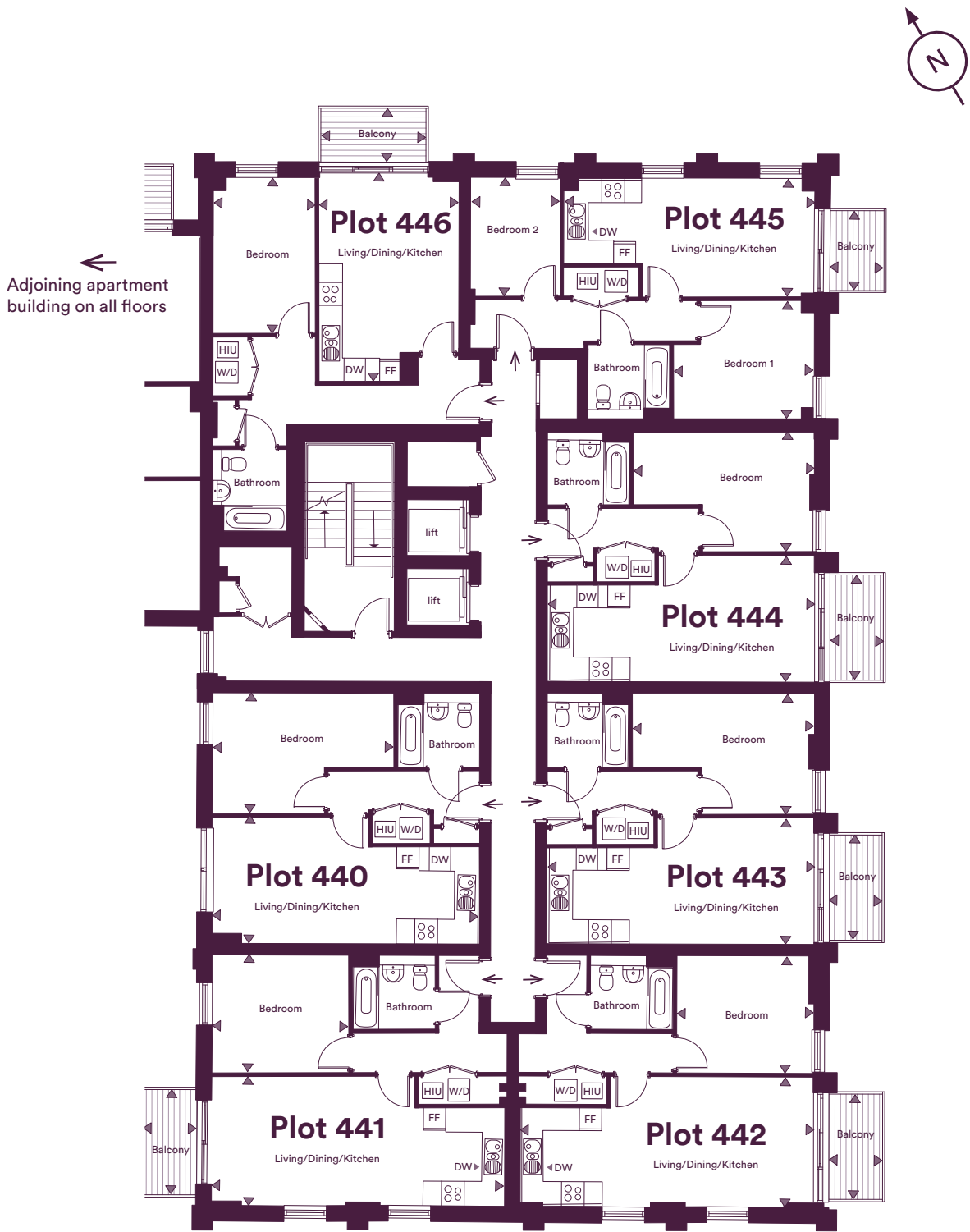


The floor plans provided are intended to only give a general indication of the proposed floor layout, are not drawn to scale and are not intended to form part of any offer, contract, warranty or representation. Measurements are given to the widest point, are approximate and are given as a guide only. They must not be relied upon as a statement or representation of fact. Do not use these measurements for carpet sizes, appliance spaces or items of furniture. Kitchen, bathroom and utility layouts may differ to build, and specific plot sizes and layouts may vary within the same unit type. For further clarification regarding specific individual plots, please ask our Sales Associates.

DW - Dishwasher | FF - Fridge/Freezer | HIU - Heat Interface Unit | W/D - Washer/Dryer

# Fourth Floor

Plots 440, 441, 442, 443, 444, 445 & 446



## Plot 440 - 1 Bedroom Apartment

Living/Dining/Kitchen	7.24m x 3.44m	23' 9" x 11' 3"
Bedroom	4.92m x 3.93m	16' 1" x 12' 11"
Total Internal Area	45.9m²	494.3ft²

## Plot 441 - 1 Bedroom Apartment

Living/Dining/Kitchen	7.99m x 3.41m	26' 2" x 11' 2"
Bedroom	3.73m x 3.19m	12' 3" x 10' 6"
Total Internal Area	49.3m²	530.2ft²
Balcony	4.4m²	47.4ft²

## Plot 442 - 1 Bedroom Apartment

Living/Dining/Kitchen	7.99m x 3.41m	26' 2" x 11' 2"
Bedroom	3.73m x 3.19m	12' 3" x 10' 6"
Total Internal Area	49.3m²	530.2ft²
Balcony	4.4m²	47.4ft²

## Plot 443 - 1 Bedroom Apartment

Living/Dining/Kitchen	7.24m x 3.44m	23' 9" x 11' 3"
Bedroom	4.92m x 3.30m	16' 2" x 10' 8"
Total Internal Area	45.9m²	494.3ft²
Balcony	4.4m²	47.4ft²

## Plot 444 - 1 Bedroom Apartment

Living/Dining/Kitchen	7.24m x 3.44m	23' 9" x 11' 3"
Bedroom	4.92m x 3.30m	16' 2" x 10' 8"
Total Internal Area	45.9m²	494.3ft²
Balcony	4.4m²	47.4ft²

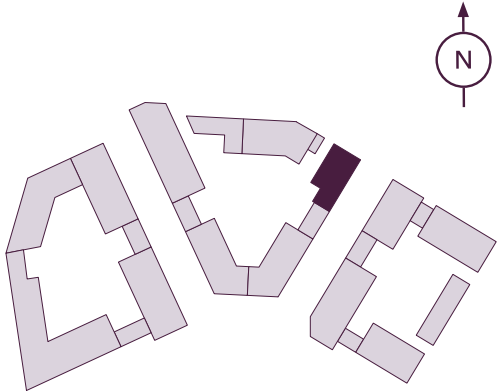
## Plot 445 - 2 Bedroom Apartment

Living/Dining/Kitchen	6.77m x 3.24m	22' 3" x 10' 8"
Bedroom 1	3.23m x 3.82m	10' 7" x 12' 6"
Bedroom 2	2.47m x 3.24m	8' 1" x 10' 8"
Total Internal Area	50.9m²	547.9ft²
Balcony	3.5m²	37.7ft²

## Plot 446 - 1 Bedroom Apartment

Living/Dining/Kitchen	5.52m x 3.82m	18' 1" x 12' 6"
Bedroom	4.25m x 2.80m	13' 11" x 9' 2"
Total Internal Area	50.9m²	547.9ft²
Balcony	4.3m²	46.1ft²

Seventh Floor
Sixth Floor
Fifth Floor
Fourth Floor
Third Floor
Second Floor
First Floor
Ground Floor

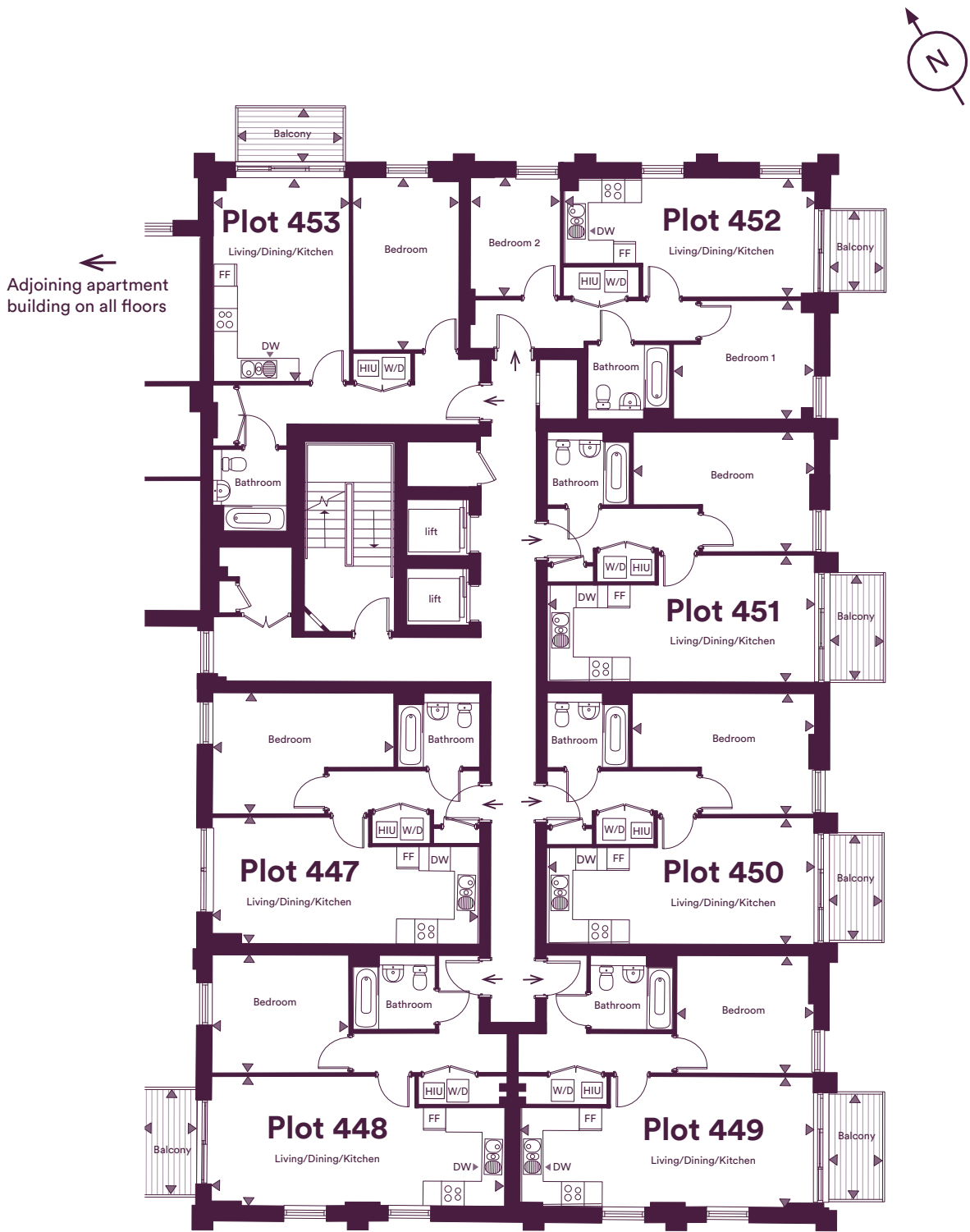


The floor plans provided are intended to only give a general indication of the proposed floor layout, are not drawn to scale and are not intended to form part of any offer, contract, warranty or representation. Measurements are given to the widest point, are approximate and are given as a guide only. They must not be relied upon as a statement or representation of fact. Do not use these measurements for carpet sizes, appliance spaces or items of furniture. Kitchen, bathroom and utility layouts may differ to build, and specific plot sizes and layouts may vary within the same unit type. For further clarification regarding specific individual plots, please ask our Sales Associates.

DW - Dishwasher | FF - Fridge/Freezer | HIU - Heat Interface Unit | W/D - Washer/Dryer

Fifth Floor

Plots 447, 448, 449, 450, 452 & 453



Plot 447 - 1 Bedroom Apartment

Living/Dining/Kitchen	7.24m x 3.44m	23' 9" x 11' 3"
Bedroom	4.92m x 3.93m	16' 1" x 12' 11"
Total Internal Area	45.9m²	494.3ft²

Plot 448 - 1 Bedroom Apartment

Living/Dining/Kitchen	7.99m x 3.41m	26' 2" x 11' 2"
Bedroom	3.73m x 3.19m	12' 3" x 10' 6"
Total Internal Area	49.3m²	530.2ft²
Balcony	4.4m²	47.4ft²

Plot 449 - 1 Bedroom Apartment

Living/Dining/Kitchen	7.99m x 3.41m	26' 2" x 11' 2"
Bedroom	3.73m x 3.19m	12' 3" x 10' 6"
Total Internal Area	49.3m²	530.2ft²
Balcony	4.4m²	47.4ft²

Plot 450 - 1 Bedroom Apartment

Living/Dining/Kitchen	7.24m x 3.44m	23' 9" x 11' 3"
Bedroom	4.92m x 3.30m	16' 2" x 10' 8"
Total Internal Area	45.9m²	494.3ft²
Balcony	4.4m²	47.4ft²

Plot 451 - 1 Bedroom Apartment

Living/Dining/Kitchen	7.24m x 3.44m	23' 9" x 11' 3"
Bedroom	4.92m x 3.30m	16' 2" x 10' 8"
Total Internal Area	45.9m²	494.3ft²
Balcony	4.4m²	47.4ft²

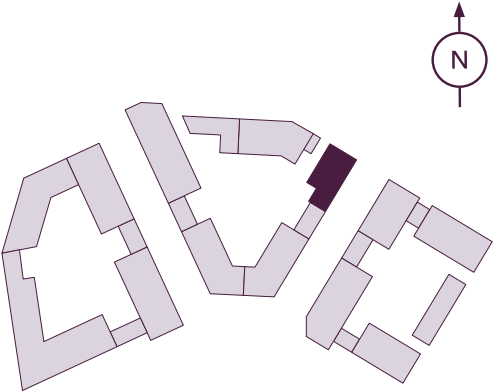
Plot 452 - 2 Bedroom Apartment

Living/Dining/Kitchen	6.77m x 3.24m	22' 3" x 10' 8"
Bedroom 1	3.23m x 3.82m	10' 7" x 12' 6"
Bedroom 2	2.47m x 3.24m	8' 1" x 10' 8"
Total Internal Area	50.9m²	547.9ft²
Balcony	3.5m²	37.7ft²

Plot 453 - 1 Bedroom Apartment

Living/Dining/Kitchen	5.50m x 3.65m	18' 1" x 11' 12"
Bedroom	4.68m x 2.97m	15' 4" x 9' 9"
Total Internal Area	48.1m²	518.1ft²
Balcony	4.3m²	46.1ft²

Seventh Floor
Sixth Floor
<b>Fifth Floor</b>
Fourth Floor
Third Floor
Second Floor
First Floor
Ground Floor

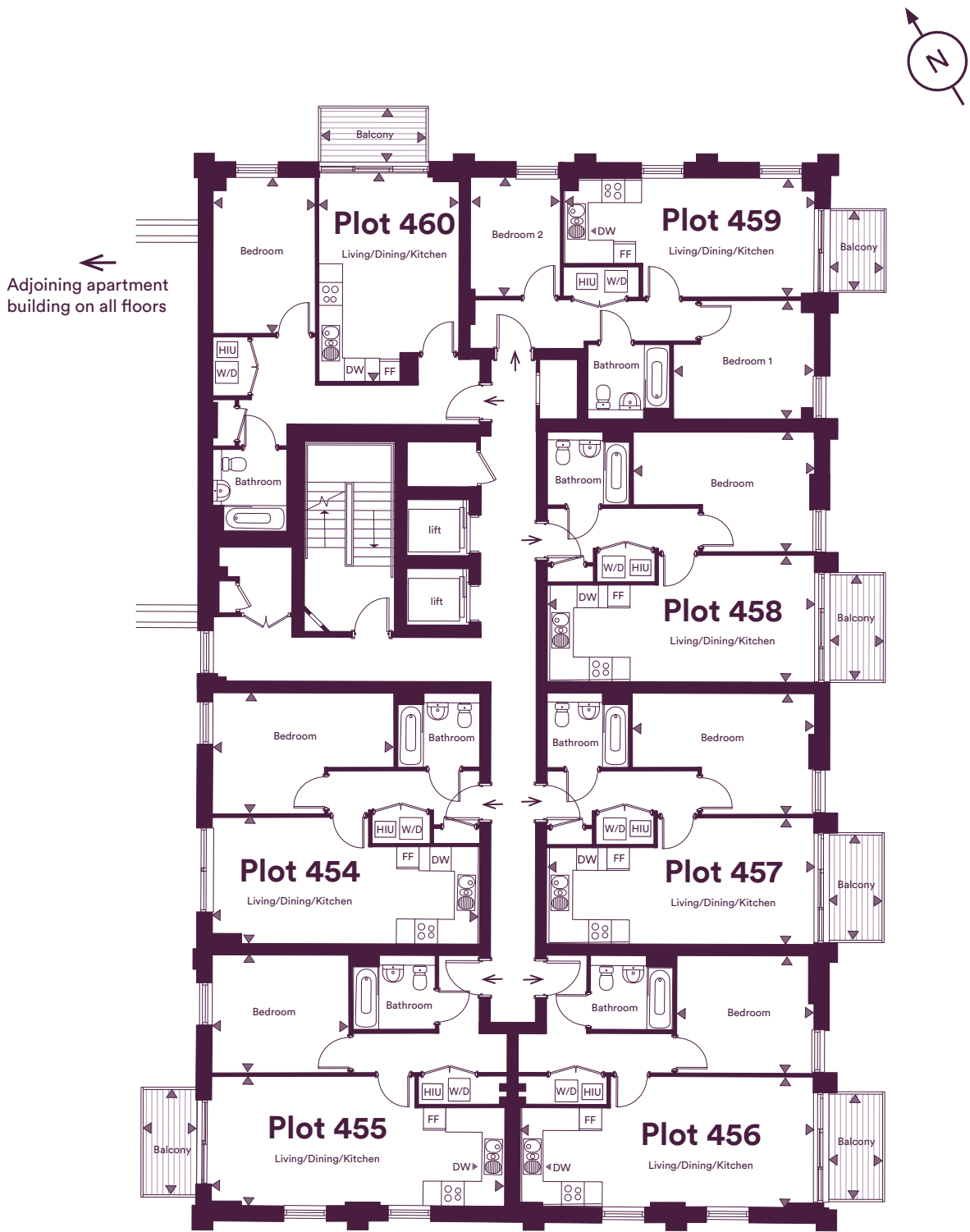


The floor plans provided are intended to only give a general indication of the proposed floor layout, are not drawn to scale and are not intended to form part of any offer, contract, warranty or representation. Measurements are given to the widest point, are approximate and are given as a guide only. They must not be relied upon as a statement or representation of fact. Do not use these measurements for carpet sizes, appliance spaces or items of furniture. Kitchen, bathroom and utility layouts may differ to build, and specific plot sizes and layouts may vary within the same unit type. For further clarification regarding specific individual plots, please ask our Sales Associates.



# Sixth Floor

Plots 454, 455, 456, 457, 458, 459 & 460



## Plot 454 - 1 Bedroom Apartment

Living/Dining/Kitchen	7.24m x 3.44m	23' 9" x 11' 3"
Bedroom	4.92m x 3.93m	16' 1" x 12' 11"
Total Internal Area	45.9m²	494.3ft²

## Plot 455 - 1 Bedroom Apartment

Living/Dining/Kitchen	7.99m x 3.41m	26' 2" x 11' 2"
Bedroom	3.73m x 3.19m	12' 3" x 10' 6"
Total Internal Area	49.3m²	530.2ft²
Balcony	4.4m²	47.4ft²

## Plot 456 - 1 Bedroom Apartment

Living/Dining/Kitchen	7.99m x 3.41m	26' 2" x 11' 2"
Bedroom	3.73m x 3.19m	12' 3" x 10' 6"
Total Internal Area	49.3m²	530.2ft²
Balcony	4.4m²	47.4ft²

## Plot 457 - 1 Bedroom Apartment

Living/Dining/Kitchen	7.24m x 3.44m	23' 9" x 11' 3"
Bedroom	4.92m x 3.30m	16' 2" x 10' 8"
Total Internal Area	45.9m²	494.3ft²
Balcony	4.4m²	47.4ft²

## Plot 458 - 1 Bedroom Apartment

Living/Dining/Kitchen	7.24m x 3.44m	23' 9" x 11' 3"
Bedroom	4.92m x 3.30m	16' 2" x 10' 8"
Total Internal Area	45.9m²	494.3ft²
Balcony	4.4m²	47.4ft²

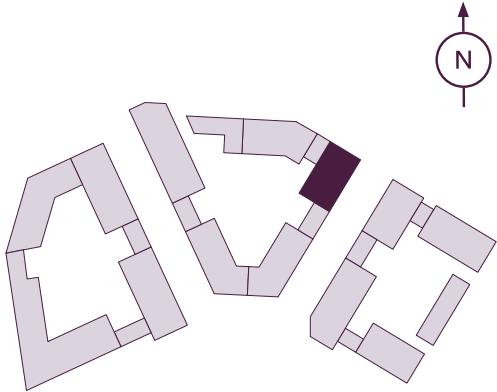
## Plot 459 - 2 Bedroom Apartment

Living/Dining/Kitchen	6.77m x 3.24m	22' 3" x 10' 8"
Bedroom 1	3.23m x 3.82m	10' 7" x 12' 6"
Bedroom 2	2.47m x 3.24m	8' 1" x 10' 8"
Total Internal Area	50.9m²	547.9ft²
Balcony	3.5m²	37.7ft²

## Plot 460 - 1 Bedroom Apartment

Living/Dining/Kitchen	5.52m x 3.82m	18' 1" x 12' 6"
Bedroom	4.25m x 2.80m	13' 11" x 9' 2"
Total Internal Area	50.9m²	547.9ft²
Balcony	4.3m²	46.1ft²

Seventh Floor
Sixth Floor
Fifth Floor
Fourth Floor
Third Floor
Second Floor
First Floor
Ground Floor

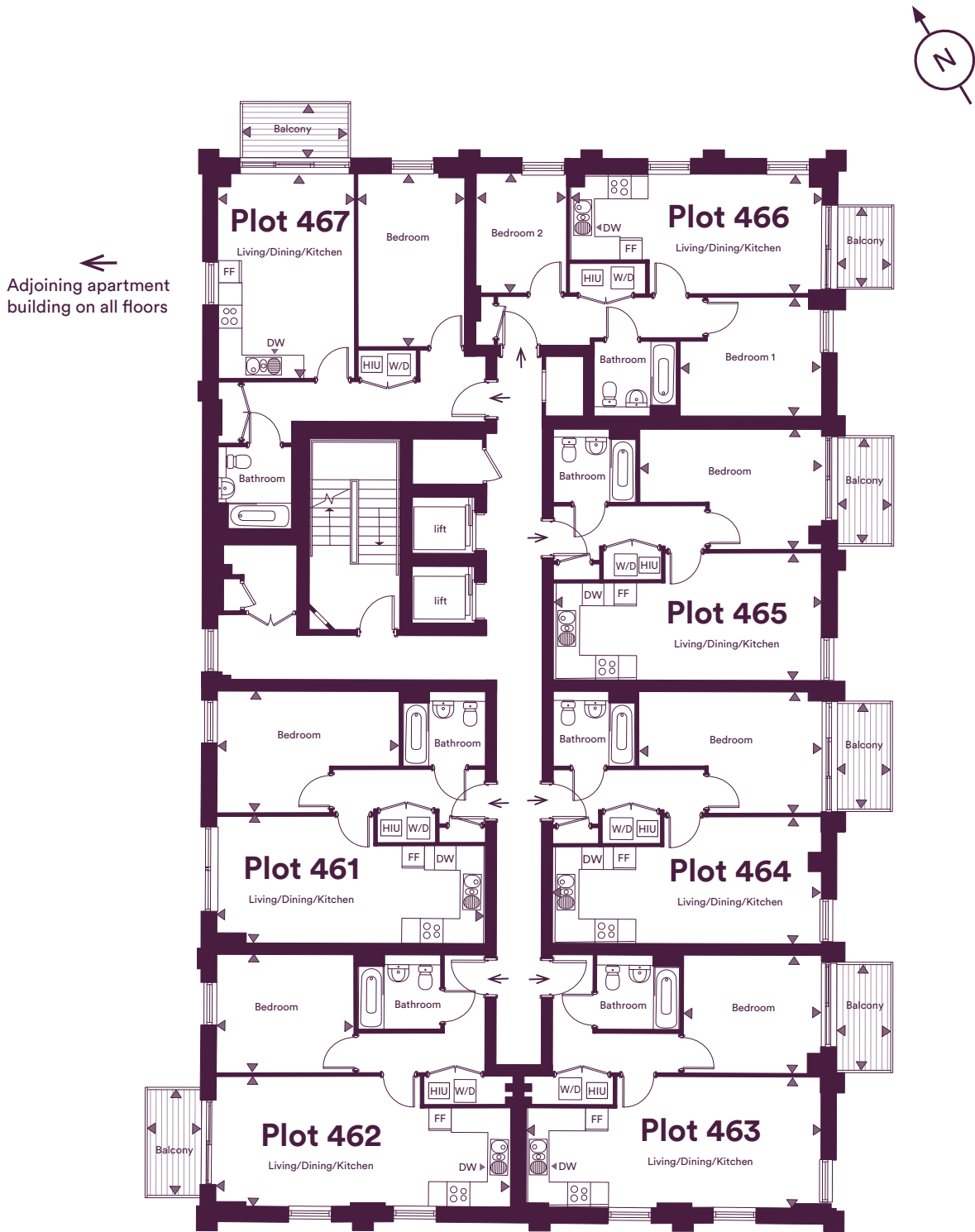


The floor plans provided are intended to only give a general indication of the proposed floor layout, are not drawn to scale and are not intended to form part of any offer, contract, warranty or representation. Measurements are given to the widest point, are approximate and are given as a guide only. They must not be relied upon as a statement or representation of fact. Do not use these measurements for carpet sizes, appliance spaces or items of furniture. Kitchen, bathroom and utility layouts may differ to build, and specific plot sizes and layouts may vary within the same unit type. For further clarification regarding specific individual plots, please ask our Sales Associates.

DW - Dishwasher | FF - Fridge/Freezer | HIU - Heat Interface Unit | W/D - Washer/Dryer

# Seventh Floor

Plots 461, 462, 463, 464, 465, 466 & 467



## Plot 461 - 1 Bedroom Apartment

Living/Dining/Kitchen	7.24m x 3.44m	23' 9" x 11' 3"
Bedroom	4.92m x 3.93m	16' 1" x 12' 11"
Total Internal Area	45.9m <sup>2</sup>	494.3ft <sup>2</sup>

## Plot 462 - 1 Bedroom Apartment

Living/Dining/Kitchen	7.99m x 3.41m	26' 2" x 11' 2"
Bedroom	3.73m x 3.19m	12' 3" x 10' 6"
Total Internal Area	49.3m <sup>2</sup>	530.2ft <sup>2</sup>
Balcony	4.4m <sup>2</sup>	47.4ft <sup>2</sup>

## Plot 463 - 1 Bedroom Apartment

Living/Dining/Kitchen	7.99m x 3.41m	26' 2" x 11' 2"
Bedroom	3.73m x 3.19m	12' 3" x 10' 6"
Total Internal Area	49.3m <sup>2</sup>	530.2ft <sup>2</sup>
Balcony	4.4m <sup>2</sup>	47.4ft <sup>2</sup>

## Plot 464 - 1 Bedroom Apartment

Living/Dining/Kitchen	7.24m x 3.44m	23' 9" x 11' 3"
Bedroom	4.92m x 3.30m	16' 2" x 10' 8"
Total Internal Area	45.9m <sup>2</sup>	494.3ft <sup>2</sup>
Balcony	4.4m <sup>2</sup>	47.4ft <sup>2</sup>

## Plot 465 - 1 Bedroom Apartment

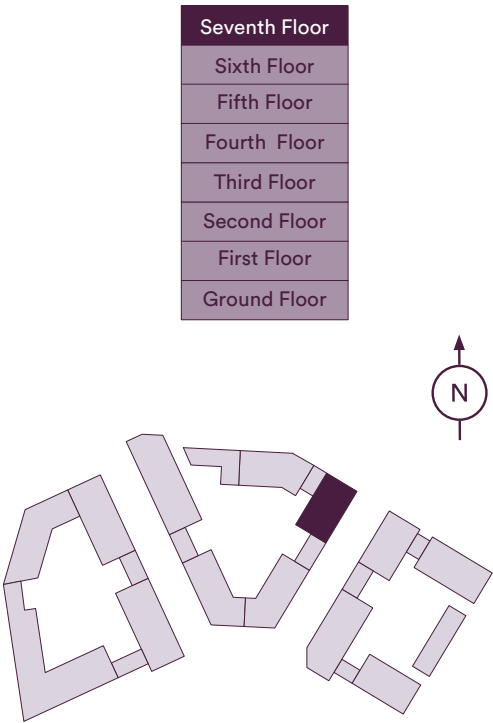
Living/Dining/Kitchen	7.24m x 3.44m	23' 9" x 11' 3"
Bedroom	4.92m x 3.30m	16' 2" x 10' 8"
Total Internal Area	45.9m <sup>2</sup>	494.3ft <sup>2</sup>
Balcony	4.4m <sup>2</sup>	47.4ft <sup>2</sup>

## Plot 466 - 2 Bedroom Apartment

Living/Dining/Kitchen	6.77m x 3.24m	22' 3" x 10' 8"
Bedroom 1	3.23m x 3.82m	10' 7" x 12' 6"
Bedroom 2	2.47m x 3.24m	8' 1" x 10' 8"
Total Internal Area	50.9m <sup>2</sup>	547.9ft <sup>2</sup>
Balcony	3.5m <sup>2</sup>	37.7ft <sup>2</sup>

## Plot 467 - 1 Bedroom Apartment

Living/Dining/Kitchen	5.50m x 3.65m	18' 1" x 11' 12"
Bedroom	4.68m x 2.97m	15' 4" x 9' 9"
Total Internal Area	48.1m <sup>2</sup>	518.1ft <sup>2</sup>
Balcony	4.3m <sup>2</sup>	46.1ft <sup>2</sup>



The floor plans provided are intended to only give a general indication of the proposed floor layout, are not drawn to scale and are not intended to form part of any offer, contract, warranty or representation. Measurements are given to the widest point, are approximate and are given as a guide only. They must not be relied upon as a statement or representation of fact. Do not use these measurements for carpet sizes, appliance spaces or items of furniture. Kitchen, bathroom and utility layouts may differ to build, and specific plot sizes and layouts may vary within the same unit type. For further clarification regarding specific individual plots, please ask our Sales Associates.

DW - Dishwasher | FF - Fridge/Freezer | HIU - Heat Interface Unit | W/D - Washer/Dryer







# We're here and ready to help

When you're ready to move in, L&Q will give you a personal introduction to your new L&Q home.

**The L&Q new homes warranty**  
We will demonstrate how to operate your appliances and heating and talk you through any special features, all of which will be detailed in your Home User Guide.

We are confident that you will be delighted with your new L&Q home, but for added peace of mind, all of our homes also come with an L&Q new homes warranty.

This lasts for two years from the date of legal completion. For the 2-year period, we guarantee items supplied as part of your new home, covering repairs needed due to faulty workmanship or materials. The NHBC Buildmark cover is valid for 10 years from the date the building was finished.

Your Sales Associate can provide you with more details on the L&Q warranty and NHBC Buildmark cover. You can also access the full terms and conditions on our website: [lqgroup.org.uk](http://lqgroup.org.uk)



## A selection of other L&Q developments



**L&Q at Bankside Gardens, Reading**  
[lqhomes.com/banksidegardens](http://lqhomes.com/banksidegardens)



**The Arbour, Chelmsford**  
[lqhomes.com/beaulieuarbour](http://lqhomes.com/beaulieuarbour)



**L&Q at Marleigh, Cambridge**  
[lqhomes.com/marleigh](http://lqhomes.com/marleigh)

## L&Q at Huntley Wharf

Kenavon Drive  
Reading  
RG1 3DH

@ [huntleywharf@lqgroup.org.uk](mailto:huntleywharf@lqgroup.org.uk)  
📞 0333 999 7113  
🌐 [lqhomes.com/huntleywharf](http://lqhomes.com/huntleywharf)

**Disclaimer**  
All information in this document is correct at the time of publication going to print May 2023. The contents of this brochure should not be considered material information for the purposes of purchasing a home. No image or photograph (whether computer generated or otherwise) is taken as a statement or representation of fact, and no image or photograph (whether computer generated or otherwise) forms part of any offer, contract, warranty or representation.

**Registered office:** L&Q, 29-35 West Ham Lane, Stratford, London E15 4PH. Homes & Communities Agency L4517. Registered Society 30441R Exempt charity. Details correct at the time of going to print May 2023. Your home is at risk if you fail to keep up repayments on a mortgage, rent or other loan secured on it. Please make sure you can afford the repayments before you take out a mortgage.

L&Q