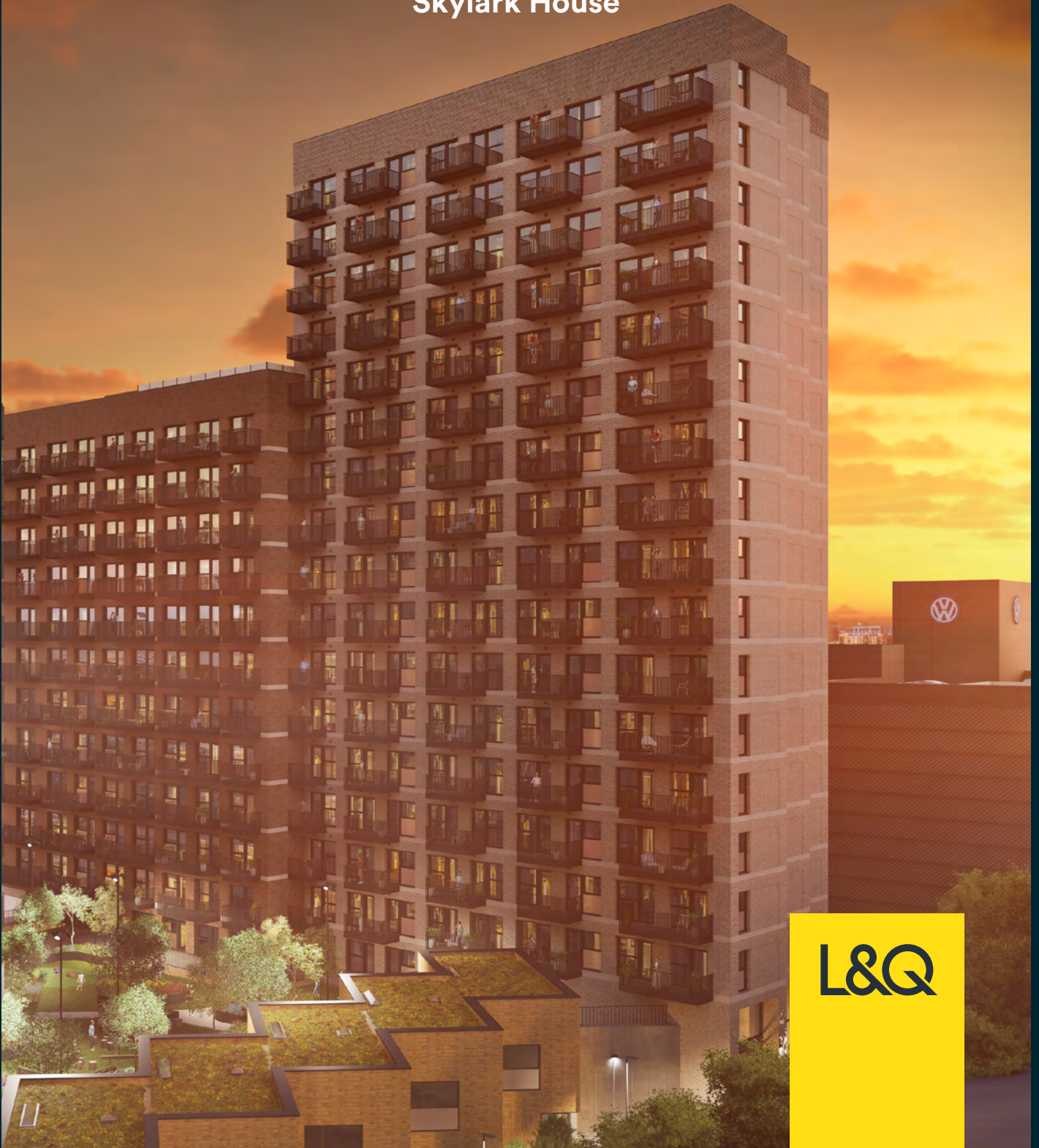


KEW BRIDGE RISE

Site Plan & Floor Plan Brochure
Skylark House



L&Q

Site Plan



Image is a CGI and is for indicative purposes only

Property Key

- Shared Ownership and Market Sale Apartments

- Shared Ownership Apartments

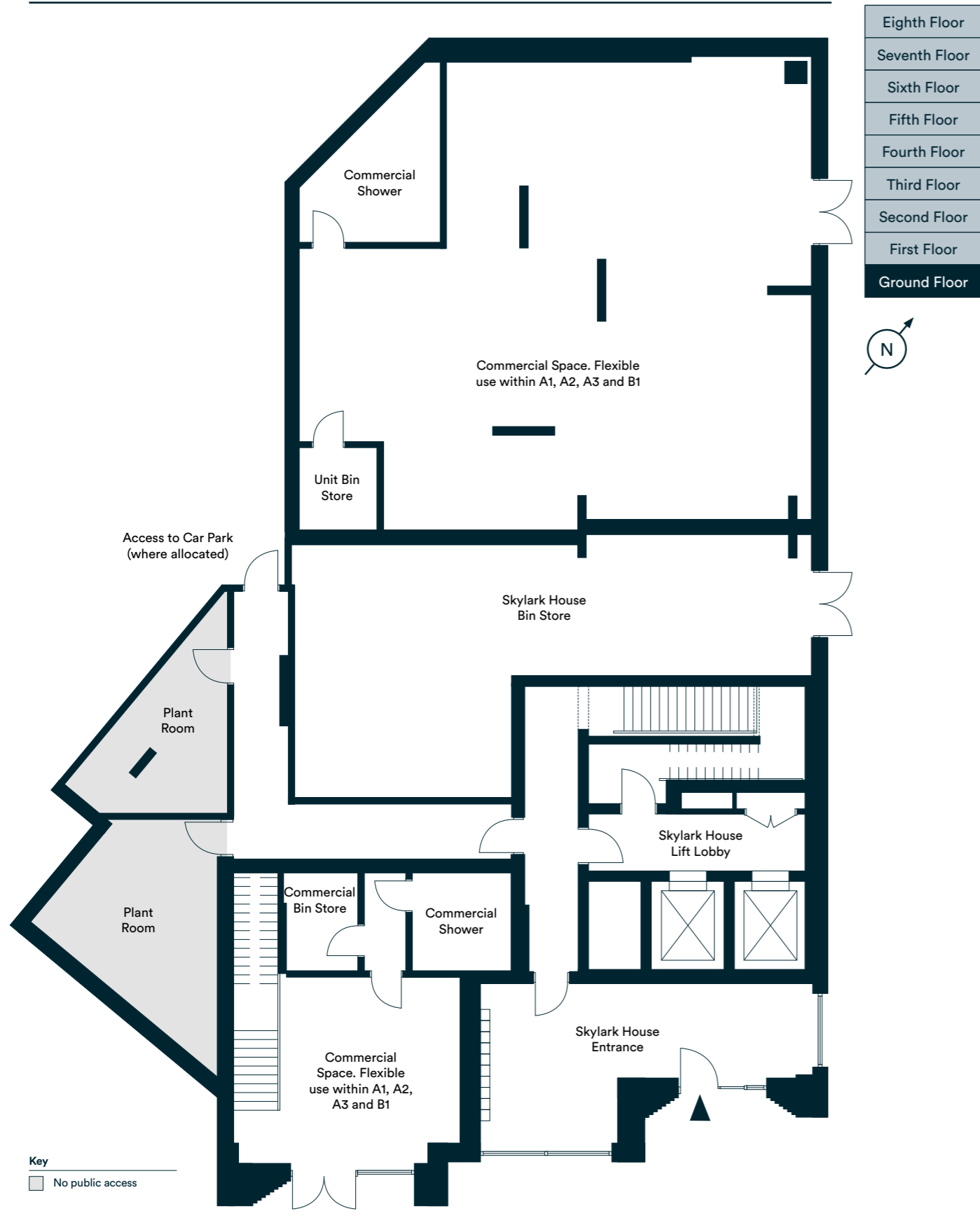
- Affordable Rent Houses and Apartments

- Market Sale Apartments

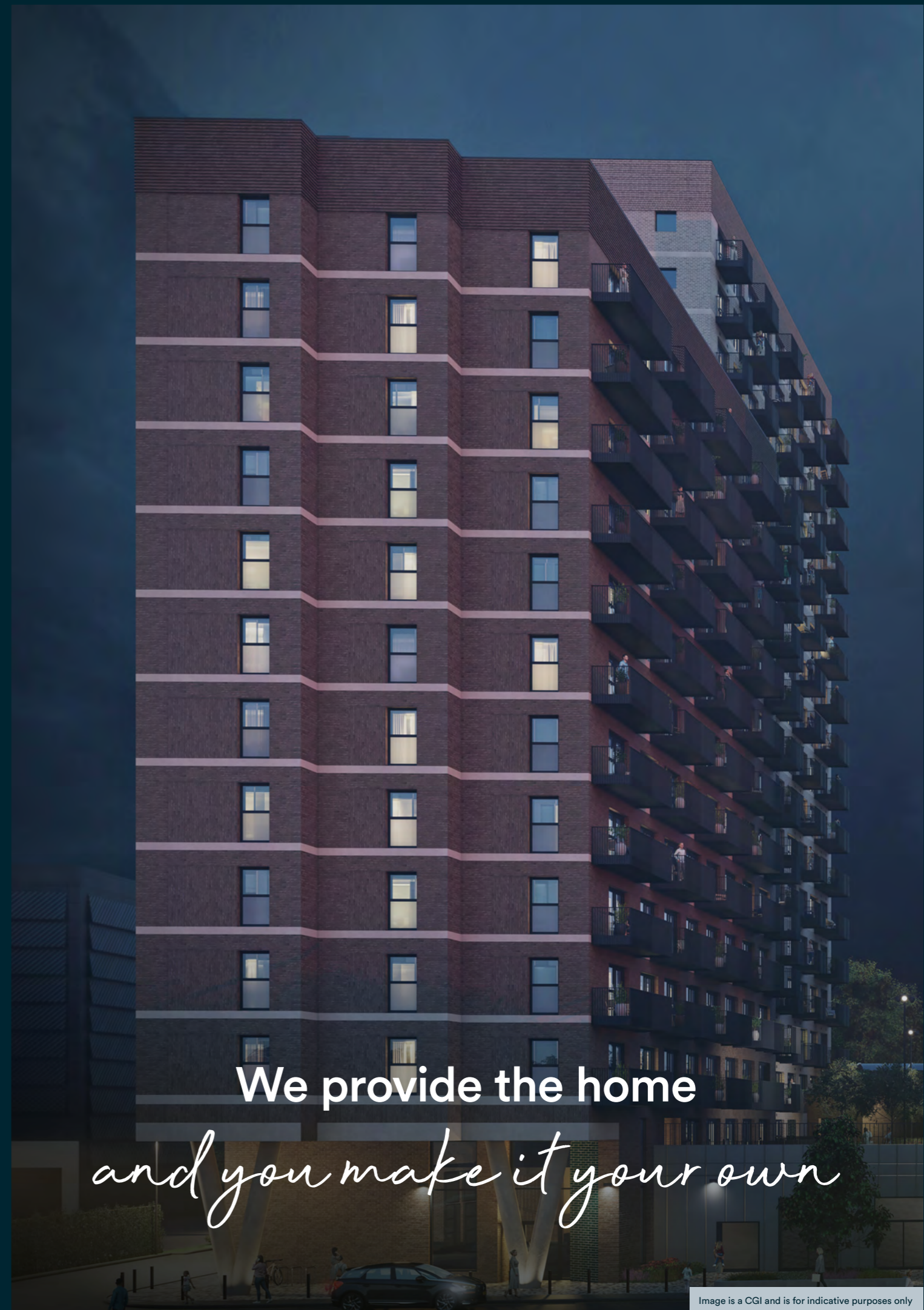
- On-site Amenities

Please note that the properties are currently under construction. For further clarification regarding specific individual plots, please ask our Sales Associates. Any depiction of the layout does not show details of gradients of land, boundary treatments, local authority street lighting or landscaping. It is our current intention to build in accordance with this layout including the locations of Market Sale, Shared Ownership, Private Rent and other tenures shown. However, there may be occasions when house designs, boundaries, landscaping and positions of roads and footpaths, play areas and other facilities or amenities, or the type of tenure or tenure location, may change as the development proceeds and as properties are marketed. The layout shown and type of tenures included is subject to amendments resulting from changes to the planning permission and planning obligations for the development. Depictions of the layout should be used as guidance only. No site map (whether computer generated or otherwise) forms part of any offer, contract, warranty, or representation and are for illustrative and guidance purposes only, quality of this technology may vary. In relation to computer generated images, minimum dimensions have been used to generate this image and as a result dimensions may vary (and should not be relied on by you).

Ground Floor



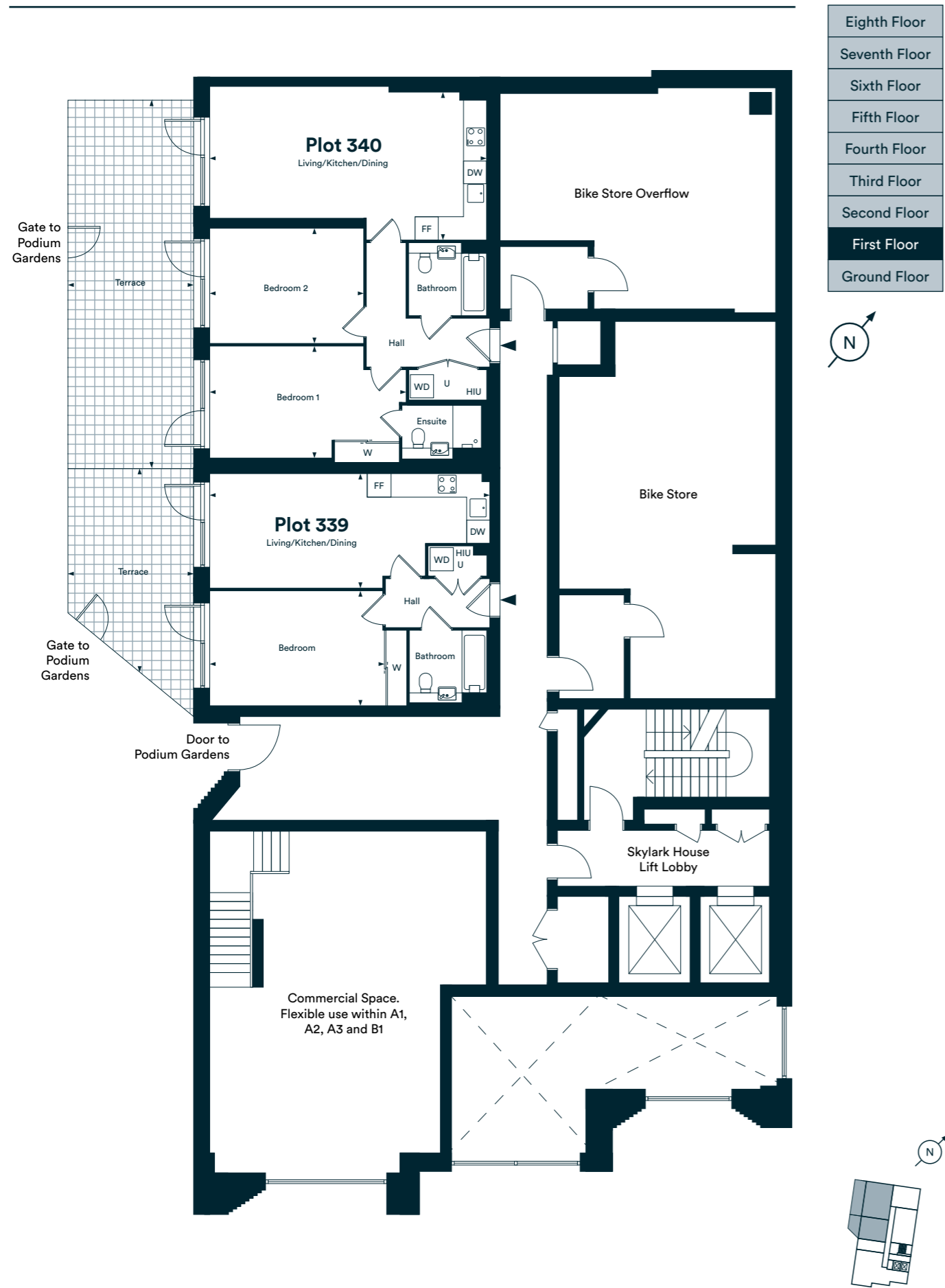
The floor plans provided are intended to only give a general indication of the proposed floor layout, are not drawn to scale and are not intended to form part of any offer, contract, warranty or representation. Measurements are given to the widest point, are approximate and are given as a guide only. They must not be relied upon as a statement or representation of fact. Do not use these measurements for carpet sizes, appliance spaces or items of furniture. Kitchen, bathroom and utility layouts may differ to build, and specific plot sizes and layouts may vary within the same unit type. Built-in wardrobe to include mirrored sliding doors, shelf and chrome hanging rail. For further clarification regarding specific individual plots, please ask our Sales Associates.



We provide the home
and you make it your own

First Floor

Plots 339 & 340



Plot 339 - 1 Bedroom Apartment

Living/Kitchen/Dining	7.75m x 3.20m	25'5" x 10'5"
Bedroom	4.85m x 3.20m	16'0" x 10'6"
Total Internal Area	51m²	546ft²
Terrace	19m ²	204.5ft ²

Plot 340 - 2 Bedroom Apartment

Living/Kitchen/Dining	4.10m x 7.75m	13'6" x 25'5"
Bedroom 1	3.10m x 5.50m	10'2" x 18'1"
Bedroom 2	3.20m x 4.30m	10'6" x 14'1"
Total Internal Area	81m²	876ft²
Terrace	36m ²	387.5ft ²

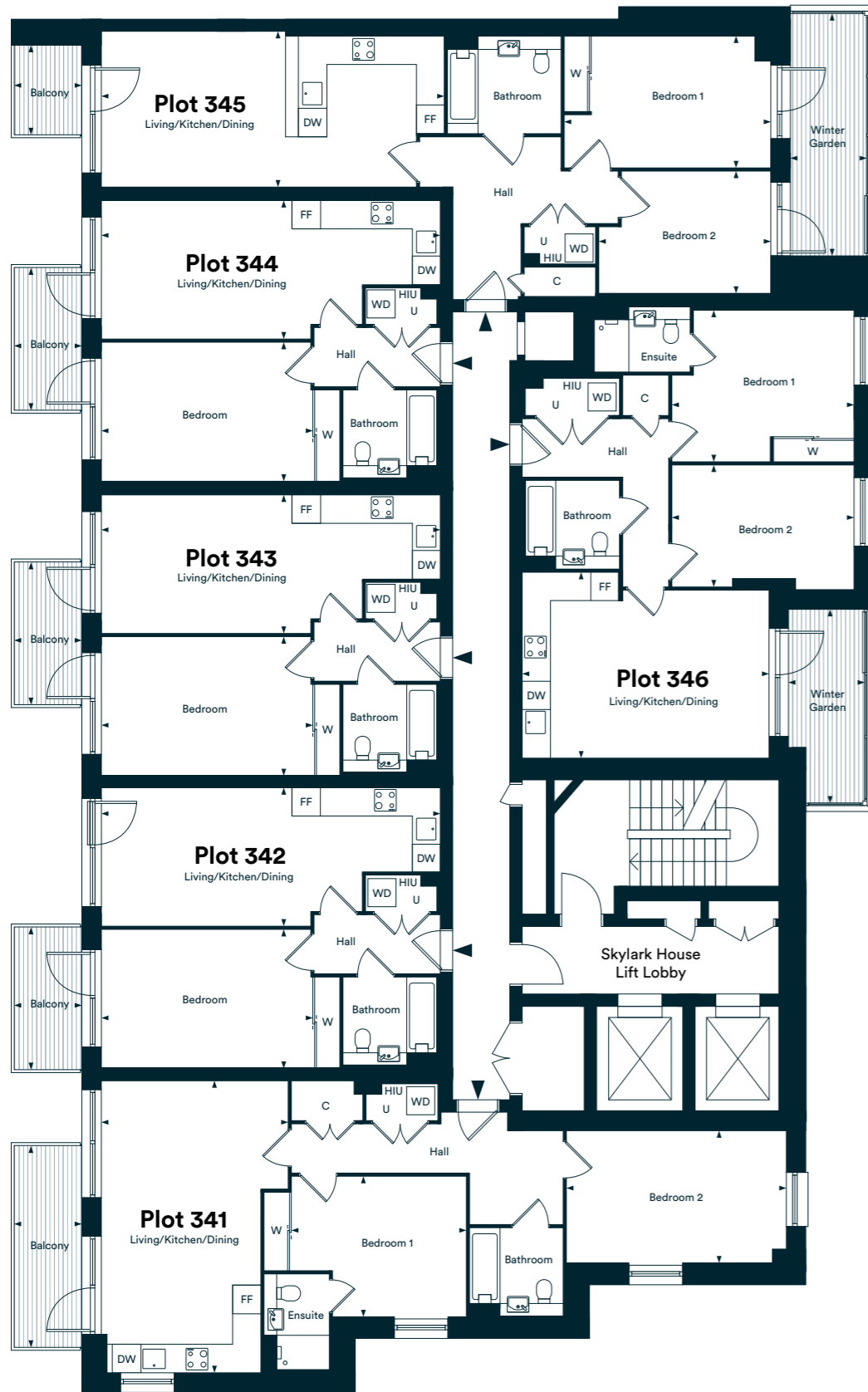
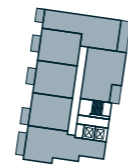
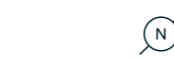
FF - Fridge/Freezer | DW - Dishwasher | W - Wardrobe | C - Cupboard
 U - Utility Room | WD - Washer/Dryer | HIU - Heat Interface Unit

The floor plans provided are intended to only give a general indication of the proposed floor layout, are not drawn to scale and are not intended to form part of any offer, contract, warranty or representation. Measurements are given to the widest point, are approximate and are given as a guide only. They must not be relied upon as a statement or representation of fact. Do not use these measurements for carpet sizes, appliance spaces or items of furniture. Kitchen, bathroom and utility layouts may differ to build, and specific plot sizes and layouts may vary within the same unit type. Built-in wardrobe to include mirrored sliding doors, shelf and chrome hanging rail. For further clarification regarding specific individual plots, please ask our Sales Associates.

Second Floor

Plots 341, 342, 343, 344, 345 & 346

Eighth Floor
Seventh Floor
Sixth Floor
Fifth Floor
Fourth Floor
Third Floor
Second Floor
First Floor
Ground Floor



Plot 341 - 2 Bedroom Apartment

Living/Kitchen/Dining	4.30m x 6.75m	14'1" x 22'1"
Bedroom 1	4.00m x 3.20m	13'2" x 10'7"
Bedroom 2	5.15m x 3.05m	16'10" x 10'0"
Total Internal Area	79m²	849ft²
Balcony	7m ²	75.3ft ²

Plot 342 - 1 Bedroom Apartment

Living/Kitchen/Dining	7.75m x 3.20m	25'5" x 10'5"
Bedroom	4.85m x 3.20m	16'0" x 10'6"
Total Internal Area	51m²	546ft²
Balcony	5m ²	53.8ft ²

Plots 343 & 344 - 1 Bedroom Apartment

Living/Kitchen/Dining	7.75m x 3.20m	25'5" x 10'5"
Bedroom	4.85m x 3.20m	16'0" x 10'6"
Total Internal Area	51m²	546ft²
Balcony	5m ²	53.8ft ²

Plot 345 - 2 Bedroom Apartment

Living/Kitchen/Dining	7.90m x 3.60m	25'10" x 11'9"
Bedroom 1	4.75m x 3.05m	15'7" x 10'1"
Bedroom 2	3.95m x 2.80m	13'0" x 9'3"
Total Internal Area	73m²	781ft²
Balcony	3.17m ²	34.1ft ²
Winter Garden	9.8m ²	105.5ft ²

Plot 346 - 2 Bedroom Apartment

Living/Kitchen/Dining	4.25m x 5.85m	14'0" x 19'2"
Bedroom 1	3.50m x 4.15m	11'5" x 13'7"
Bedroom 2	2.80m x 4.15m	9'2" x 13'7"
Total Internal Area	70m²	758ft²
Winter Garden	7m ²	75.3ft ²

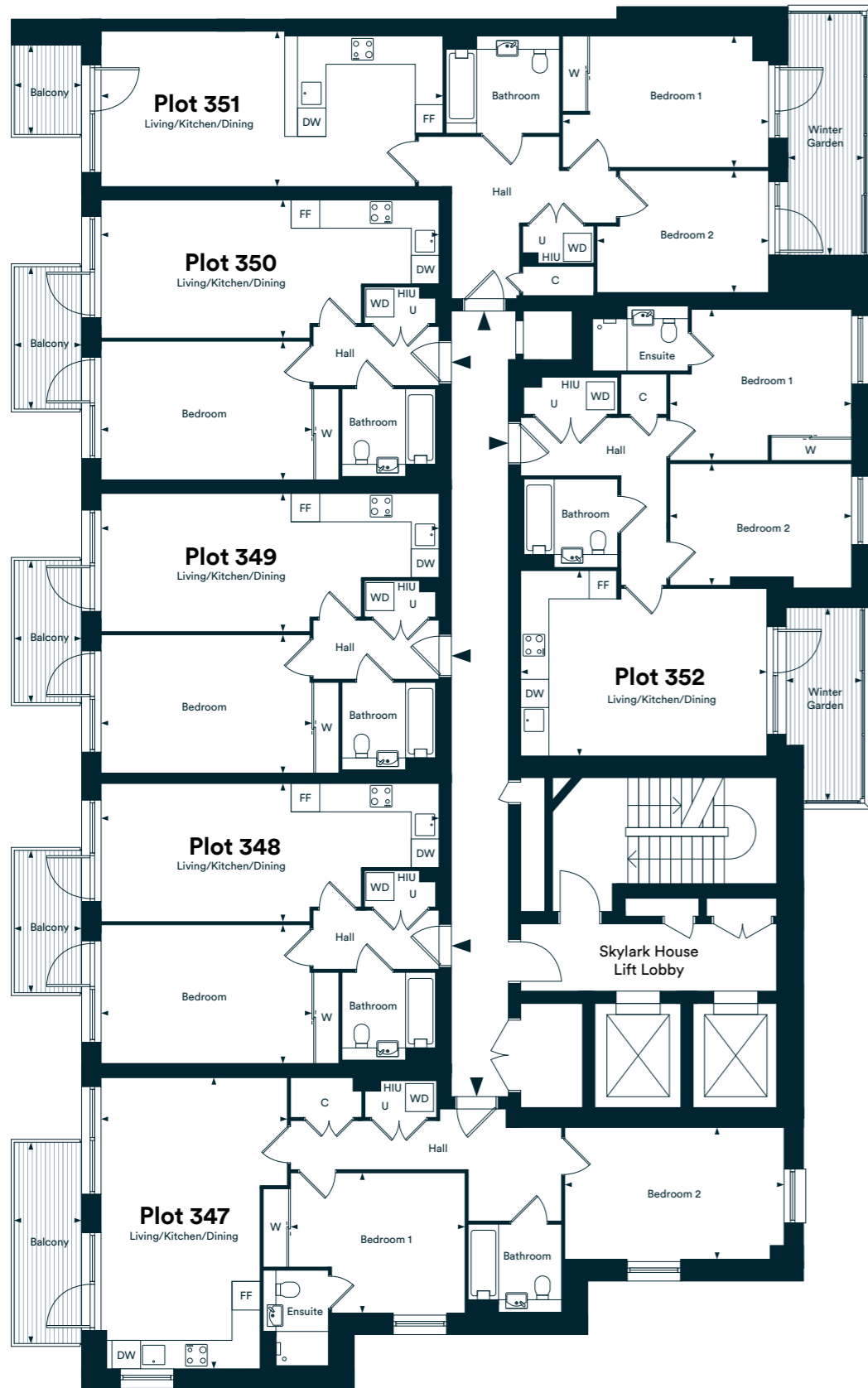
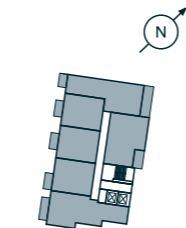
FF - Fridge/Freezer | DW - Dishwasher | W - Wardrobe | C - Cupboard
 U - Utility Room | WD - Washer/Dryer | HIU - Heat Interface Unit

The floor plans provided are intended to only give a general indication of the proposed floor layout, are not drawn to scale and are not intended to form part of any offer, contract, warranty or representation. Measurements are given to the widest point, are approximate and are given as a guide only. They must not be relied upon as a statement or representation of fact. Do not use these measurements for carpet sizes, appliance spaces or items of furniture. Kitchen, bathroom and utility layouts may differ to build, and specific plot sizes and layouts may vary within the same unit type. Built-in wardrobe to include mirrored sliding doors, shelf and chrome hanging rail. For further clarification regarding specific individual plots, please ask our Sales Associates.

Third Floor

Plots 347, 348, 349, 350, 351 & 352

Eighth Floor
Seventh Floor
Sixth Floor
Fifth Floor
Fourth Floor
Third Floor
Second Floor
First Floor
Ground Floor



Plot 347 - 2 Bedroom Apartment

Living/Kitchen/Dining	4.30m x 6.75m	14'1" x 22'1"
Bedroom 1	4.00m x 3.20m	13'2" x 10'7"
Bedroom 2	5.15m x 3.05m	16'10" x 10'0"
Total Internal Area	79m²	849ft²
Balcony	7m ²	75.3ft ²

Plots 348, 349 & 350 - 1 Bedroom Apartment

Living/Kitchen/Dining	7.75m x 3.20m	25'5" x 10'5"
Bedroom	4.85m x 3.20m	16'0" x 10'6"
Total Internal Area	51m²	546ft²
Balcony	5m ²	53.8ft ²

Plot 351 - 2 Bedroom Apartment

Living/Kitchen/Dining	7.90m x 3.60m	25'10" x 11'9"
Bedroom 1	4.75m x 3.05m	15'7" x 10'1"
Bedroom 2	3.95m x 2.80m	13'0" x 9'3"
Total Internal Area	73m²	781ft²
Balcony	3.17m ²	34.1ft ²
Winter Garden	9.8m ²	105.5ft ²

Plot 352 - 2 Bedroom Apartment

Living/Kitchen/Dining	4.25m x 5.85m	14'0" x 19'2"
Bedroom 1	3.50m x 4.15m	11'5" x 13'7"
Bedroom 2	2.80m x 4.15m	9'2" x 13'7"
Total Internal Area	70m²	758ft²
Winter Garden	7m ²	75.3ft ²

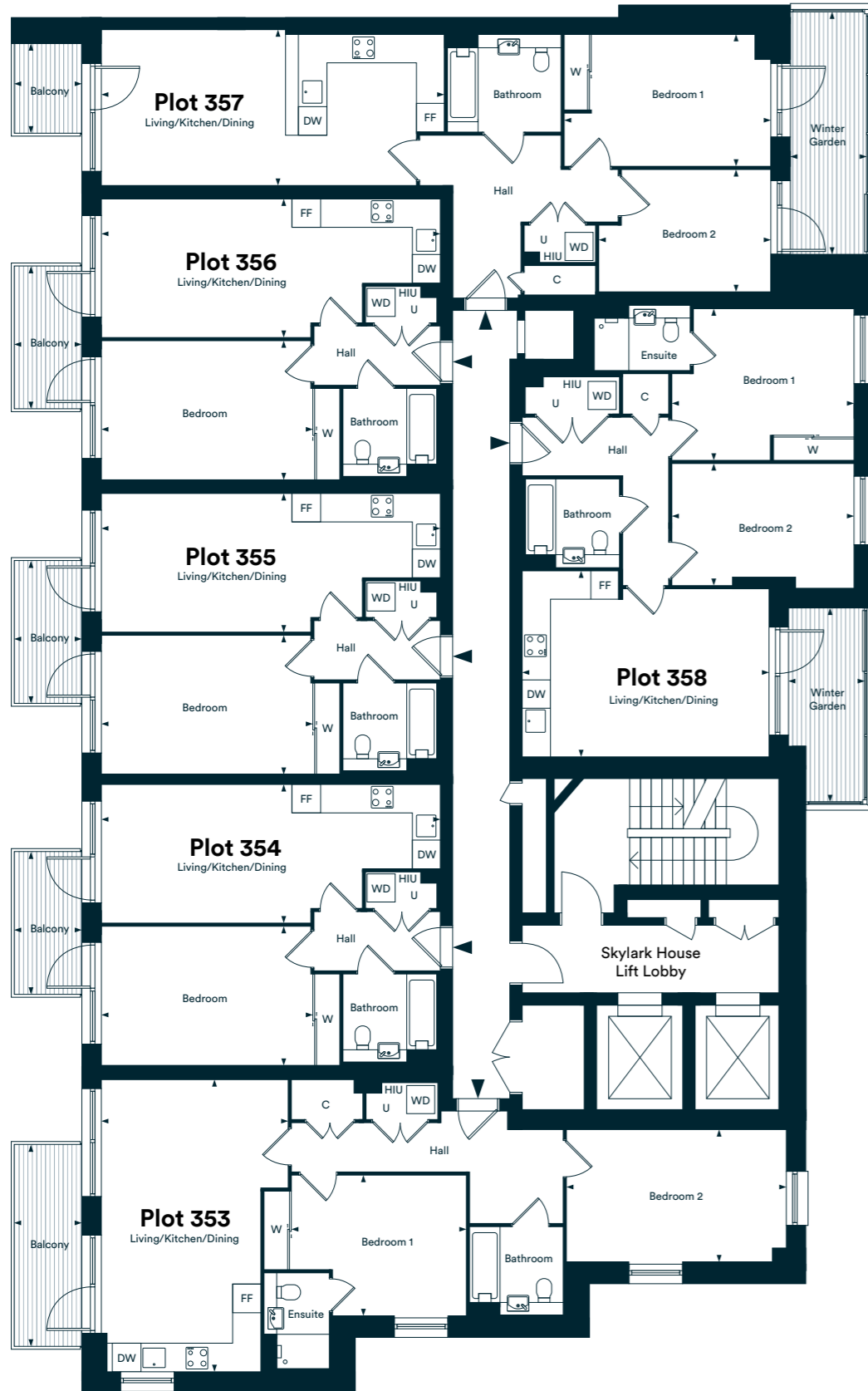
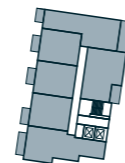
FF - Fridge/Freezer | DW - Dishwasher | W - Wardrobe | C - Cupboard
 U - Utility Room | WD - Washer/Dryer | HIU - Heat Interface Unit

The floor plans provided are intended to only give a general indication of the proposed floor layout, are not drawn to scale and are not intended to form part of any offer, contract, warranty or representation. Measurements are given to the widest point, are approximate and are given as a guide only. They must not be relied upon as a statement or representation of fact. Do not use these measurements for carpet sizes, appliance spaces or items of furniture. Kitchen, bathroom and utility layouts may differ to build, and specific plot sizes and layouts may vary within the same unit type. Built-in wardrobe to include mirrored sliding doors, shelf and chrome hanging rail. For further clarification regarding specific individual plots, please ask our Sales Associates.

Fourth Floor

Plots 353, 354, 355, 356, 357 & 358

Eighth Floor
Seventh Floor
Sixth Floor
Fifth Floor
Fourth Floor
Third Floor
Second Floor
First Floor
Ground Floor



Plot 353 - 2 Bedroom Apartment

Living/Kitchen/Dining	4.30m x 6.75m	14'1" x 22'1"
Bedroom 1	4.00m x 3.20m	13'2" x 10'7"
Bedroom 2	5.15m x 3.05m	16'10" x 10'0"
Total Internal Area	79m²	849ft²
Balcony	7m ²	75.3ft ²

Plots 354, 355 & 356 - 1 Bedroom Apartment

Living/Kitchen/Dining	7.75m x 3.20m	25'5" x 10'5"
Bedroom	4.85m x 3.20m	16'0" x 10'6"
Total Internal Area	51m²	546ft²
Balcony	5m ²	53.8ft ²

Plot 357 - 2 Bedroom Apartment

Living/Kitchen/Dining	7.90m x 3.60m	25'10" x 11'9"
Bedroom 1	4.75m x 3.05m	15'7" x 10'1"
Bedroom 2	3.95m x 2.80m	13'0" x 9'3"
Total Internal Area	73m²	781ft²
Balcony	3.17m ²	34.1ft ²
Winter Garden	9.8m ²	105.5ft ²

Plot 358 - 2 Bedroom Apartment

Living/Kitchen/Dining	4.25m x 5.85m	14'0" x 19'2"
Bedroom 1	3.50m x 4.15m	11'5" x 13'7"
Bedroom 2	2.80m x 4.15m	9'2" x 13'7"
Total Internal Area	70m²	758ft²
Winter Garden	7m ²	75.3ft ²

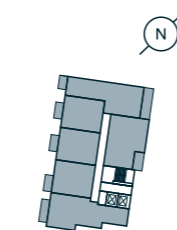
FF - Fridge/Freezer | DW - Dishwasher | W - Wardrobe | C - Cupboard
 U - Utility Room | WD - Washer/Dryer | HIU - Heat Interface Unit

The floor plans provided are intended to only give a general indication of the proposed floor layout, are not drawn to scale and are not intended to form part of any offer, contract, warranty or representation. Measurements are given to the widest point, are approximate and are given as a guide only. They must not be relied upon as a statement or representation of fact. Do not use these measurements for carpet sizes, appliance spaces or items of furniture. Kitchen, bathroom and utility layouts may differ to build, and specific plot sizes and layouts may vary within the same unit type. Built-in wardrobe to include mirrored sliding doors, shelf and chrome hanging rail. For further clarification regarding specific individual plots, please ask our Sales Associates.

Fifth Floor

Plots 359, 360, 361, 362, 363 & 364

Eighth Floor
Seventh Floor
Sixth Floor
Fifth Floor
Fourth Floor
Third Floor
Second Floor
First Floor
Ground Floor



Plot 359 - 2 Bedroom Apartment

Living/Kitchen/Dining	4.30m x 6.75m	14'1" x 22'1"
Bedroom 1	4.00m x 3.20m	13'2" x 10'7"
Bedroom 2	5.15m x 3.05m	16'10" x 10'0"
Total Internal Area	79m²	849ft²
Balcony	7m ²	75.3ft ²

Plots 360, 361 & 362 - 1 Bedroom Apartment

Living/Kitchen/Dining	7.75m x 3.20m	25'5" x 10'5"
Bedroom	4.85m x 3.20m	16'0" x 10'6"
Total Internal Area	51m²	546ft²
Balcony	5m ²	53.8ft ²

Plot 363 - 2 Bedroom Apartment

Living/Kitchen/Dining	7.90m x 3.60m	25'10" x 11'9"
Bedroom 1	4.75m x 3.05m	15'7" x 10'1"
Bedroom 2	3.95m x 2.80m	13'0" x 9'3"
Total Internal Area	73m²	781ft²
Balcony	3.17m ²	34.1ft ²
Winter Garden	9.8m ²	105.5ft ²

Plot 364 - 2 Bedroom Apartment

Living/Kitchen/Dining	4.25m x 5.85m	14'0" x 19'2"
Bedroom 1	3.50m x 4.15m	11'5" x 13'7"
Bedroom 2	2.80m x 4.15m	9'2" x 13'7"
Total Internal Area	70m²	758ft²
Winter Garden	7m ²	75.3ft ²

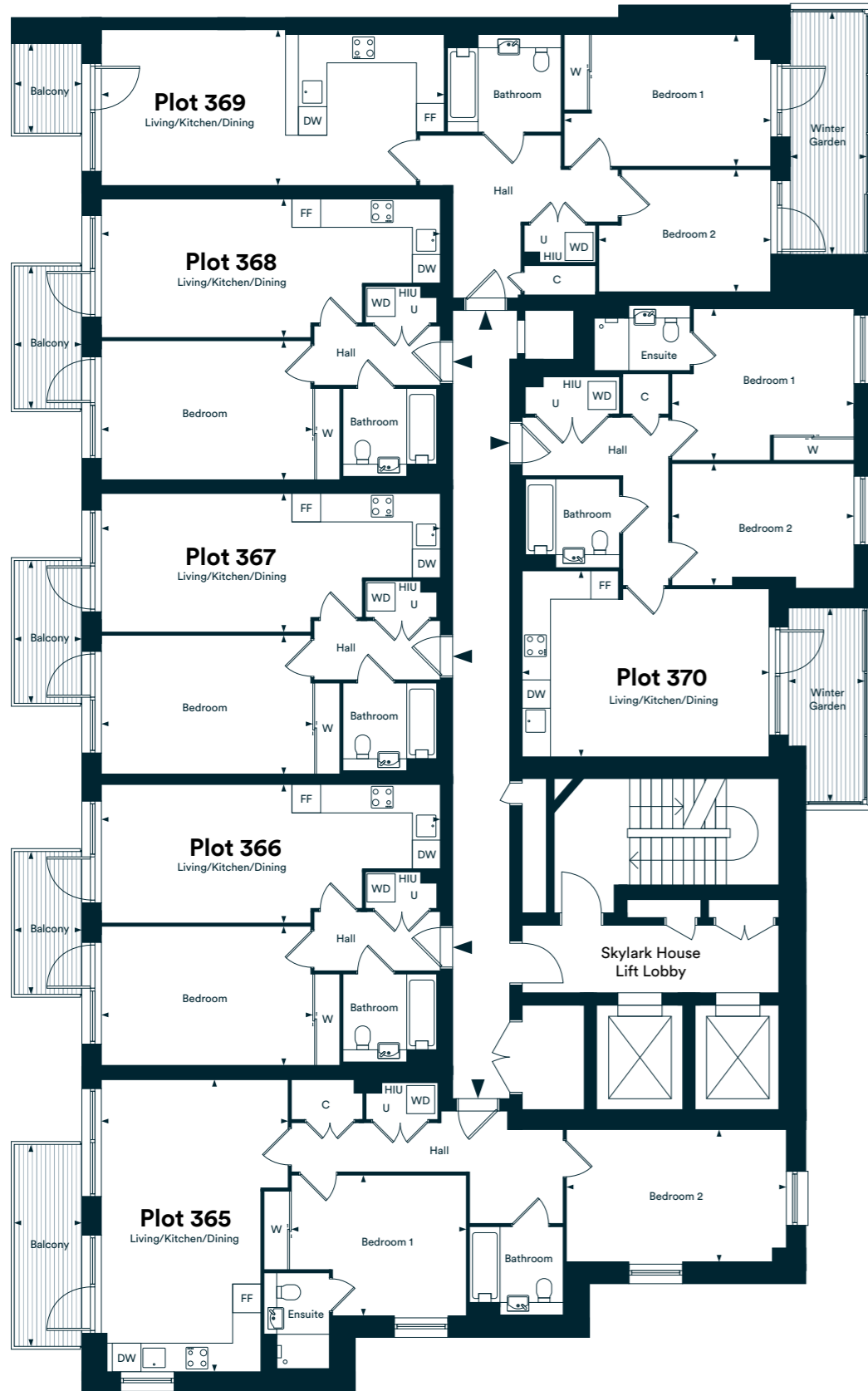
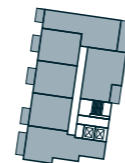
FF - Fridge/Freezer | DW - Dishwasher | W - Wardrobe | C - Cupboard
 U - Utility Room | WD - Washer/Dryer | HIU - Heat Interface Unit

The floor plans provided are intended to only give a general indication of the proposed floor layout, are not drawn to scale and are not intended to form part of any offer, contract, warranty or representation. Measurements are given to the widest point, are approximate and are given as a guide only. They must not be relied upon as a statement or representation of fact. Do not use these measurements for carpet sizes, appliance spaces or items of furniture. Kitchen, bathroom and utility layouts may differ to build, and specific plot sizes and layouts may vary within the same unit type. Built-in wardrobe to include mirrored sliding doors, shelf and chrome hanging rail. For further clarification regarding specific individual plots, please ask our Sales Associates.

Sixth Floor

Plots 365, 366, 367, 368, 369 & 370

Eighth Floor
Seventh Floor
Sixth Floor
Fifth Floor
Fourth Floor
Third Floor
Second Floor
First Floor
Ground Floor



Plot 365 - 2 Bedroom Apartment

Living/Kitchen/Dining	4.30m x 6.75m	14'1" x 22'1"
Bedroom 1	4.00m x 3.20m	13'2" x 10'7"
Bedroom 2	5.15m x 3.05m	16'10" x 10'0"
Total Internal Area	79m²	849ft²
Balcony	7m ²	75.3ft ²

Plots 366, 367 & 368 - 1 Bedroom Apartment

Living/Kitchen/Dining	7.75m x 3.20m	25'5" x 10'5"
Bedroom	4.85m x 3.20m	16'0" x 10'6"
Total Internal Area	51m²	546ft²
Balcony	5m ²	53.8ft ²

Plot 369 - 2 Bedroom Apartment

Living/Kitchen/Dining	7.90m x 3.60m	25'10" x 11'9"
Bedroom 1	4.75m x 3.05m	15'7" x 10'1"
Bedroom 2	3.95m x 2.80m	13'0" x 9'3"
Total Internal Area	73m²	781ft²
Balcony	3.17m ²	34.1ft ²
Winter Garden	9.8m ²	105.5ft ²

Plot 370 - 2 Bedroom Apartment

Living/Kitchen/Dining	4.25m x 5.85m	14'0" x 19'2"
Bedroom 1	3.50m x 4.15m	11'5" x 13'7"
Bedroom 2	2.80m x 4.15m	9'2" x 13'7"
Total Internal Area	70m²	758ft²
Winter Garden	7m ²	75.3ft ²

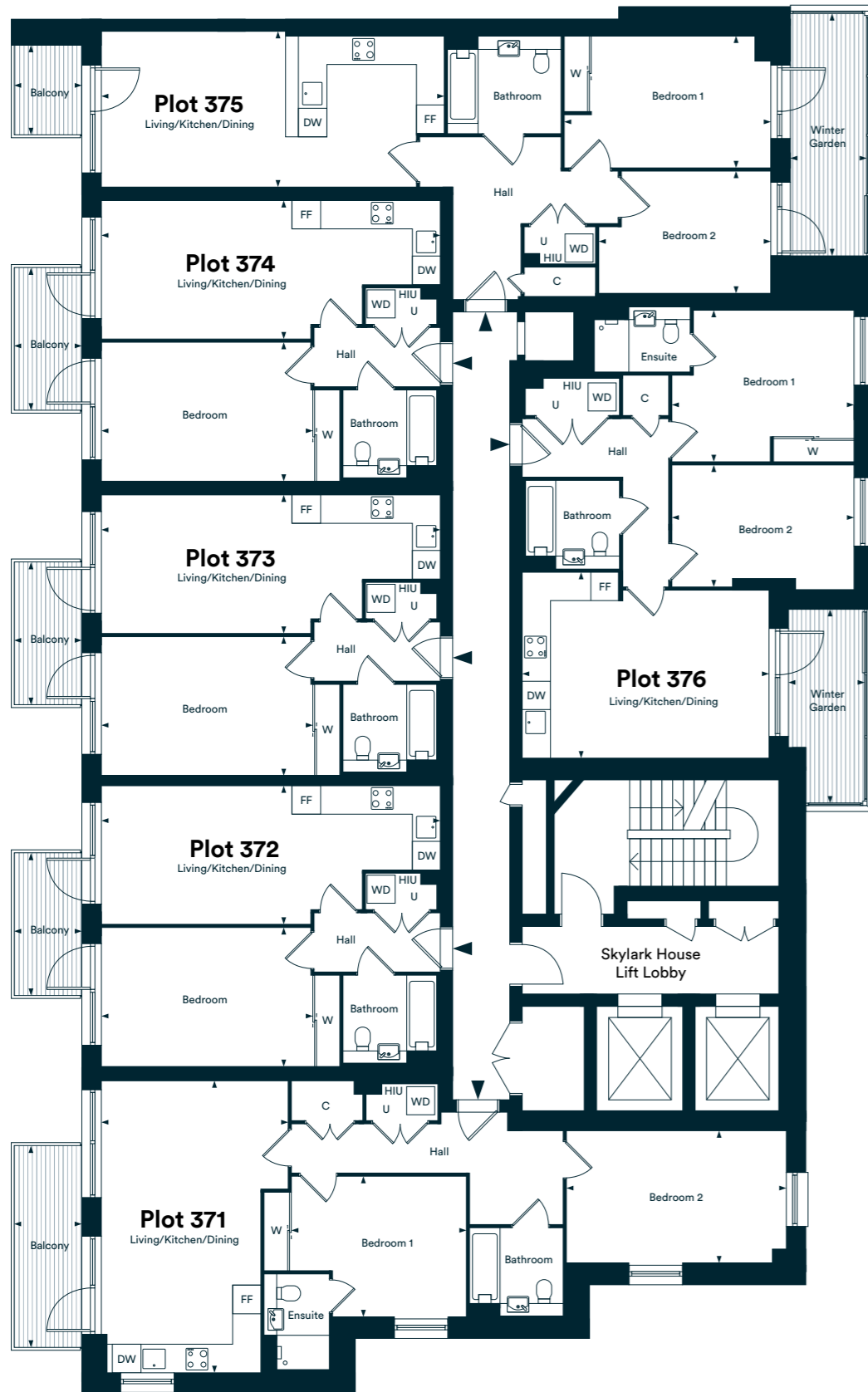
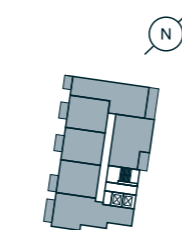
FF - Fridge/Freezer | DW - Dishwasher | W - Wardrobe | C - Cupboard
 U - Utility Room | WD - Washer/Dryer | HIU - Heat Interface Unit

The floor plans provided are intended to only give a general indication of the proposed floor layout, are not drawn to scale and are not intended to form part of any offer, contract, warranty or representation. Measurements are given to the widest point, are approximate and are given as a guide only. They must not be relied upon as a statement or representation of fact. Do not use these measurements for carpet sizes, appliance spaces or items of furniture. Kitchen, bathroom and utility layouts may differ to build, and specific plot sizes and layouts may vary within the same unit type. Built-in wardrobe to include mirrored sliding doors, shelf and chrome hanging rail. For further clarification regarding specific individual plots, please ask our Sales Associates.

Seventh Floor

Plots 371, 372, 373, 374, 375 & 376

Eighth Floor
Seventh Floor
Sixth Floor
Fifth Floor
Fourth Floor
Third Floor
Second Floor
First Floor
Ground Floor



Plot 371 - 2 Bedroom Apartment

Living/Kitchen/Dining	4.30m x 6.75 m	14'1" x 22'1"
Bedroom 1	4.00m x 3.20m	13'2" x 10'7"
Bedroom 2	5.15m x 3.05m	16'10" x 10'0"
Total Internal Area	79m²	849ft²
Balcony	7m ²	75.3ft ²

Plots 372, 373 & 374 - 1 Bedroom Apartment

Living/Kitchen/Dining	7.75m x 3.20m	25'5" x 10'5"
Bedroom	4.85m x 3.20m	16'0" x 10'6"
Total Internal Area	51m²	546ft²
Balcony	5m ²	53.8ft ²

Plot 375 - 2 Bedroom Apartment

Living/Kitchen/Dining	7.90m x 3.60m	25'10" x 11'9"
Bedroom 1	4.75m x 3.05m	15'7" x 10'1"
Bedroom 2	3.95m x 2.80m	13'0" x 9'3"
Total Internal Area	73m²	781ft²
Balcony	3.17m ²	34.1ft ²
Winter Garden	9.8m ²	105.5ft ²

Plot 376 - 2 Bedroom Apartment

Living/Kitchen/Dining	4.25m x 5.85m	14'0" x 19'2"
Bedroom 1	3.50m x 4.15m	11'5" x 13'7"
Bedroom 2	2.80m x 4.15m	9'2" x 13'7"
Total Internal Area	70m²	758ft²
Winter Garden	7m ²	75.3ft ²

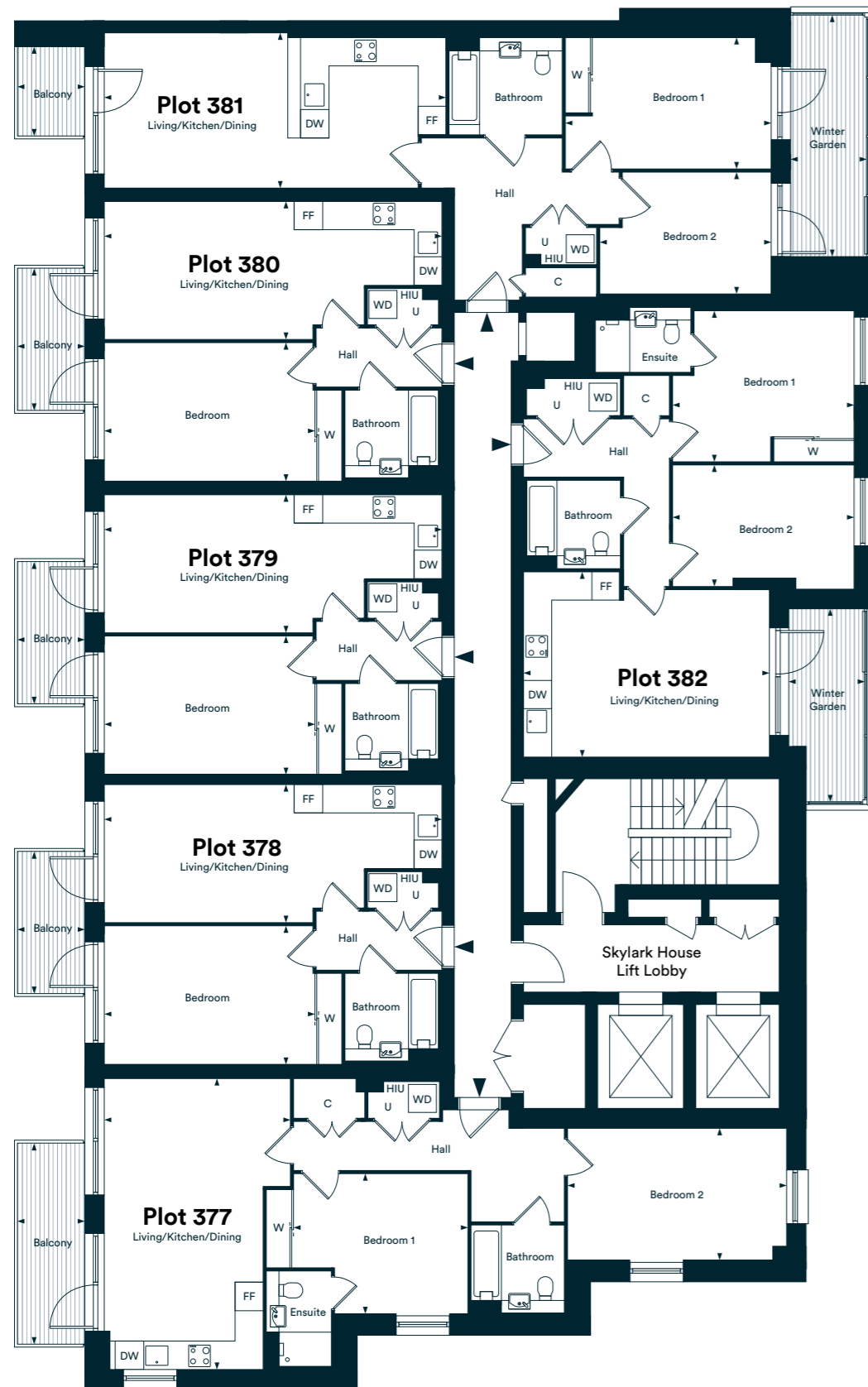
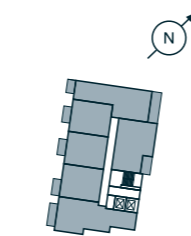
FF - Fridge/Freezer | DW - Dishwasher | W - Wardrobe | C - Cupboard
 U - Utility Room | WD - Washer/Dryer | HIU - Heat Interface Unit

The floor plans provided are intended to only give a general indication of the proposed floor layout, are not drawn to scale and are not intended to form part of any offer, contract, warranty or representation. Measurements are given to the widest point, are approximate and are given as a guide only. They must not be relied upon as a statement or representation of fact. Do not use these measurements for carpet sizes, appliance spaces or items of furniture. Kitchen, bathroom and utility layouts may differ to build, and specific plot sizes and layouts may vary within the same unit type. Built-in wardrobe to include mirrored sliding doors, shelf and chrome hanging rail. For further clarification regarding specific individual plots, please ask our Sales Associates.

Eighth Floor

Plots 377, 378, 379, 380, 381 & 382

Eighth Floor
Seventh Floor
Sixth Floor
Fifth Floor
Fourth Floor
Third Floor
Second Floor
First Floor
Ground Floor



Plot 377 - 2 Bedroom Apartment

Living/Kitchen/Dining	4.30m x 6.75m	14'1" x 22'1"
Bedroom 1	4.00m x 3.20m	13'2" x 10'7"
Bedroom 2	5.15m x 3.05m	16'10" x 10'0"
Total Internal Area	79m²	849ft²
Balcony	7m ²	75.3ft ²

Plots 378, 379 & 380 - 1 Bedroom Apartment

Living/Kitchen/Dining	7.75m x 3.20m	25'5" x 10'5"
Bedroom	4.85m x 3.20m	16'0" x 10'6"
Total Internal Area	51m²	546ft²
Balcony	5m ²	53.8ft ²

Plot 381 - 2 Bedroom Apartment

Living/Kitchen/Dining	7.90m x 3.60m	25'10" x 11'9"
Bedroom 1	4.75m x 3.05m	15'7" x 10'1"
Bedroom 2	3.95m x 2.80m	13'0" x 9'3"
Total Internal Area	73m²	781ft²
Balcony	3.17m ²	34.1ft ²
Winter Garden	9.8m ²	105.5ft ²

Plot 382 - 2 Bedroom Apartment

Living/Kitchen/Dining	4.25m x 5.85m	14'0" x 19'2"
Bedroom 1	3.50m x 4.15m	11'5" x 13'7"
Bedroom 2	2.80m x 4.15m	9'2" x 13'7"
Total Internal Area	70m²	758ft²
Winter Garden	7m ²	75.3ft ²

FF - Fridge/Freezer | DW - Dishwasher | W - Wardrobe | C - Cupboard
 U - Utility Room | WD - Washer/Dryer | HIU - Heat Interface Unit

The floor plans provided are intended to only give a general indication of the proposed floor layout, are not drawn to scale and are not intended to form part of any offer, contract, warranty or representation. Measurements are given to the widest point, are approximate and are given as a guide only. They must not be relied upon as a statement or representation of fact. Do not use these measurements for carpet sizes, appliance spaces or items of furniture. Kitchen, bathroom and utility layouts may differ to build, and specific plot sizes and layouts may vary within the same unit type. Built-in wardrobe to include mirrored sliding doors, shelf and chrome hanging rail. For further clarification regarding specific individual plots, please ask our Sales Associates.

We're here and ready to help

When you're ready to move in, L&Q will give you a personal introduction to your new L&Q home.

The L&Q new homes warranty
We will demonstrate how to operate your appliances and heating and talk you through any special features, all of which will be detailed in your Home User Guide.

We are confident that you will be delighted with your new L&Q home, but for added peace of mind, all of our homes also come with an L&Q new homes warranty.

This lasts for two years from the date of legal completion. For the 2-year period, we guarantee items supplied as part of your new home, covering repairs needed due to faulty workmanship or materials. The NHBC Buildmark cover is valid for 12 years from the date the building was finished.

Your sales negotiator can provide you with more details on the L&Q warranty and NHBC Buildmark cover. You can also access the full terms and conditions on our website: lqgroup.org.uk



A selection of other L&Q developments



L&Q at The Chain
Walthamstow, London
lqhomes.com/thechain



L&Q at Kidbrooke Village
Greenwich, London
lqhomes.com/kidbrookevillage



Prime Point
Greenwich, London
lqhomes.com/primepoint

Disclaimer

All information in this document is correct at the time of publication and is subject to change. Computer (or other advanced technology) generated images are for illustrative purposes only and dimensions are not intended to form part of any contract or warranty. Individual features such as windows, bricks and other material colours may vary, as may heating and electrical layouts. Images provided of the proposed development do not show final details of gradients of land, boundary treatments, local authority street lighting or landscaping.

Registered office: L&Q, 29-35 West Ham Lane, Stratford, London E15 4PH. Homes & Communities Agency L4517. Registered Society 30441R Exempt charity. Your home is at risk if you fail to keep up repayments on a mortgage, rent or other loan secured on it. Please make sure you can afford the repayments before you take out a mortgage.



L&Q

Kew Bridge Rise
Brentford, TW8 0EX

© kewbridgerise@lqgroup.org.uk

☎ 020 8189 0423

🌐 lqhomes.com/kewbridgerise