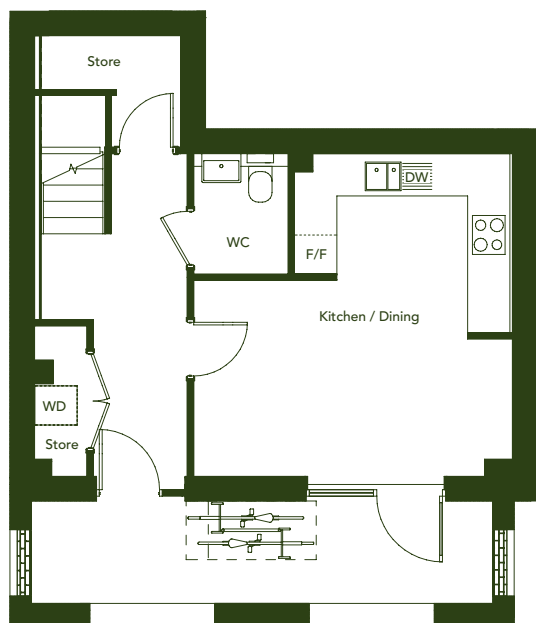


# 3 bedroom duplex apartment

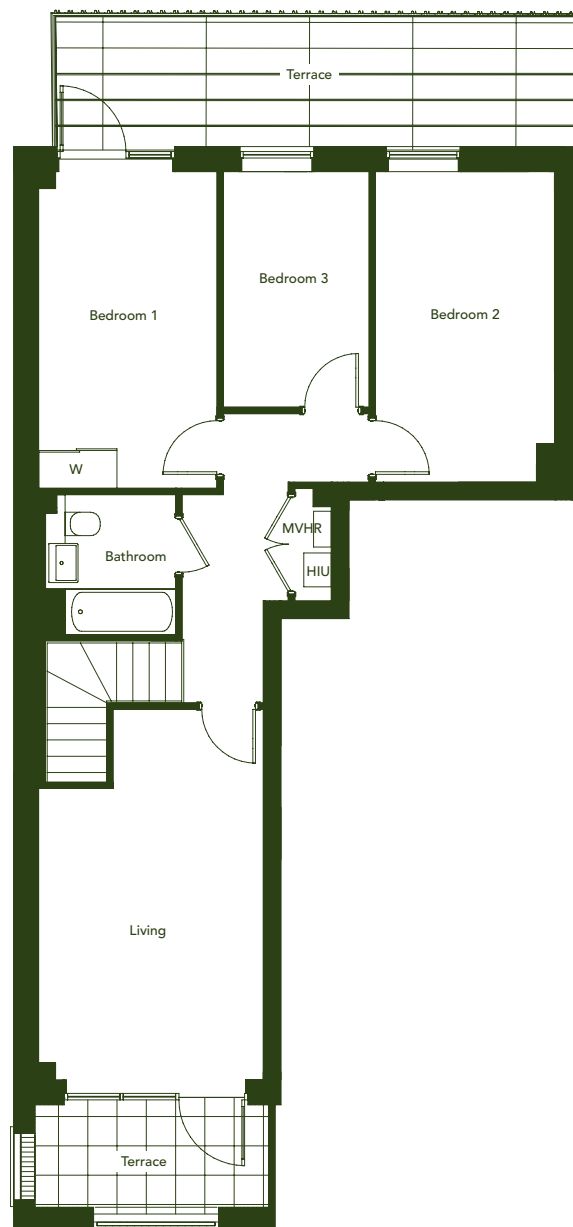
Plot 78



## Ground floor



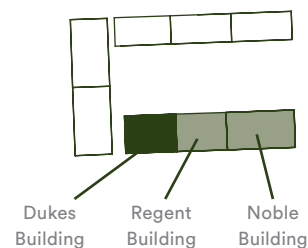
## First floor



## Accommodation

Dining/Kitchen	5.01m x 4.94m	16'5" x 16'3"
Living	5.90m x 3.45m	19'4" x 11'4"
Bedroom 1	4.87m x 2.74m	15'8" x 9'0"
Bedroom 2	4.77m x 2.75m	15'8" x 9'0"
Bedroom 3	3.62m x 2.24m	11'11" x 7'4"
<b>Total</b>	<b>112m<sup>2</sup></b>	<b>1205 ft<sup>2</sup></b>

WC – Cloakroom | W – Wardrobe | F/F – Fridge/Freezer | WD – Washer Dryer | DW – Dish Washer  
 HIU & MVHR – Heat Interface Unit & Mechanical Ventilation with Heat Recovery



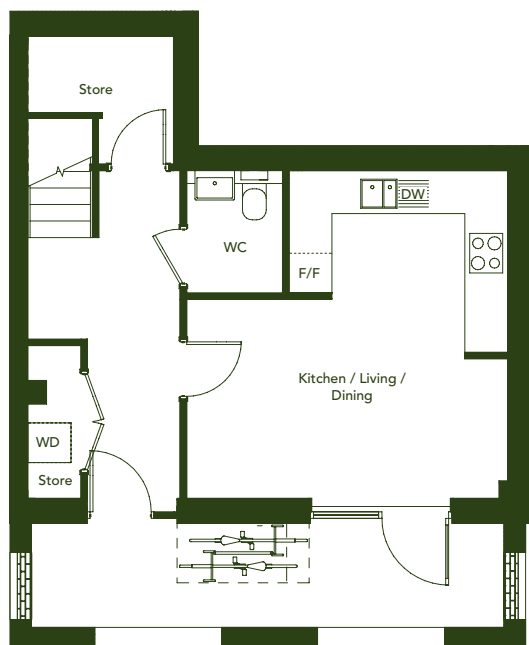
\*Denotes houses that are opposite handed/mirror image to the plans drawn. The floor plans provided are intended to only give a general indication of the proposed floor layout, are not drawn to scale and are not intended to form part of any offer, contract, warranty or representation. Measurements are given to the widest point, are approximate and are given as a guide only. They must not be relied upon as a statement or representation of fact. Do not use these measurements for carpet sizes, appliance spaces or items of furniture. Kitchen, bathroom and utility layouts may differ to build, and specific plot sizes and layouts may vary within the same unit type. Window sizes may vary. For further clarification regarding specific individual plots, please ask our Sales Advisors.

# 3 bedroom duplex apartment

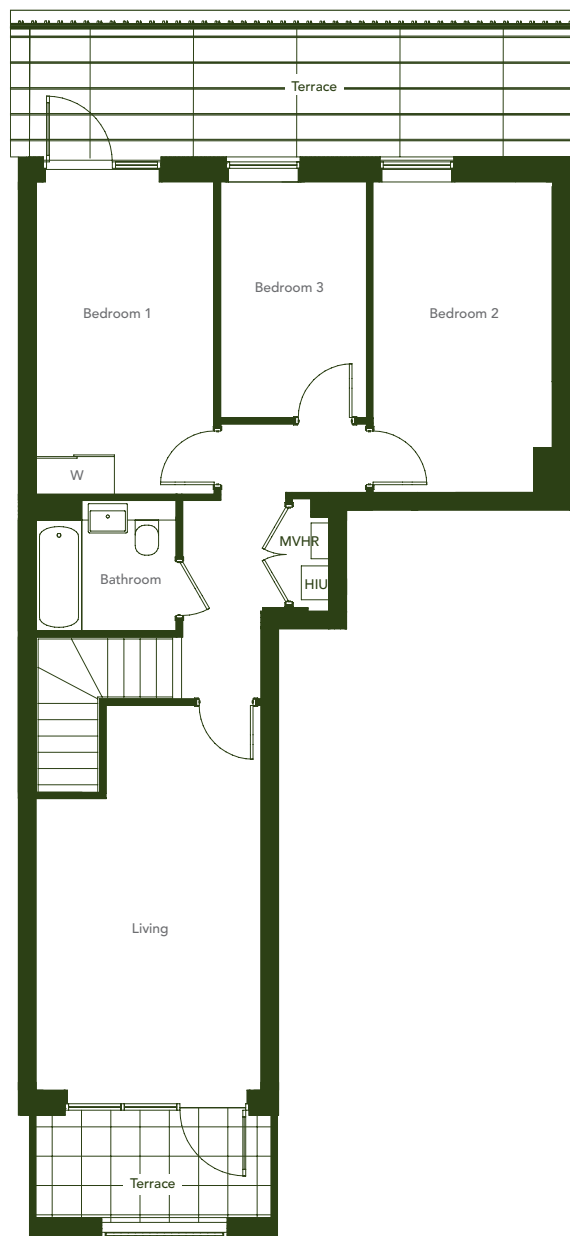
Plot 79\*, 90, 91\*



## Ground floor



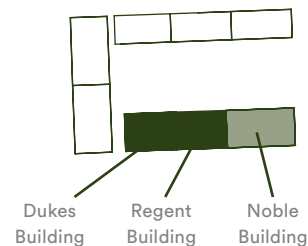
## First floor



## Accommodation

Dining/Kitchen	5.01m x 4.94m	16'5" x 16'3"
Living	5.90m x 3.45m	19'4" x 11'4"
Bedroom 1	4.87m x 2.74m	15'8" x 9'0"
Bedroom 2	4.77m x 2.75m	15'8" x 9'0"
Bedroom 3	3.62m x 2.24m	11'11" x 7'4"
<b>Total</b>	<b>112m<sup>2</sup></b>	<b>1205 ft<sup>2</sup></b>

WC – Cloakroom | W – Wardrobe | F/F – Fridge/Freezer | WD – Washer Dryer | DW – Dish Washer  
 HIU & MVHR – Heat Interface Unit & Mechanical Ventilation with Heat Recovery



\*Denotes houses that are opposite handed/mirror image to the plans drawn. The floor plans provided are intended to only give a general indication of the proposed floor layout, are not drawn to scale and are not intended to form part of any offer, contract, warranty or representation. Measurements are given to the widest point, are approximate and are given as a guide only. They must not be relied upon as a statement or representation of fact. Do not use these measurements for carpet sizes, appliance spaces or items of furniture. Kitchen, bathroom and utility layouts may differ to build, and specific plot sizes and layouts may vary within the same unit type. Window sizes may vary. For further clarification regarding specific individual plots, please ask our Sales Advisors.

# 2 bedroom apartment

Second Floor: Plots 82\*, 85, 94\*, 97

Third Floor: Plots 86\*, 89, 98\*, 101



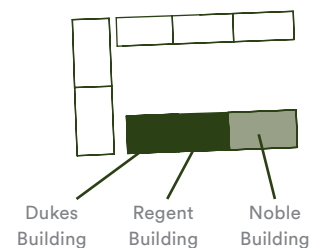
## Second and third floor



### Accommodation

Living/Dining/Kitchen	8.53m x 3.45m	28'0" x 11'4"
Bedroom 1	4.04m x 3.35m	13'3" x 11'0"
Bedroom 2	3.88m x 3.35m	12'9" x 11'0"
<b>Total</b>	<b>71m<sup>2</sup></b>	<b>769 ft<sup>2</sup></b>

WC – Cloakroom | W – Wardrobe | F/F – Fridge/Freezer | WD – Washer Dryer | DW – Dish Washer  
 HIU & MVHR – Heat Interface Unit & Mechanical Ventilation with Heat Recovery



\*Denotes houses that are opposite handed/mirror image to the plans drawn. The floor plans provided are intended to only give a general indication of the proposed floor layout, are not drawn to scale and are not intended to form part of any offer, contract, warranty or representation. Measurements are given to the widest point, are approximate and are given as a guide only. They must not be relied upon as a statement or representation of fact. Do not use these measurements for carpet sizes, appliance spaces or items of furniture. Kitchen, bathroom and utility layouts may differ to build, and specific plot sizes and layouts may vary within the same unit type. Window sizes may vary. For further clarification regarding specific individual plots, please ask our Sales Advisors.

# 1 bedroom apartment

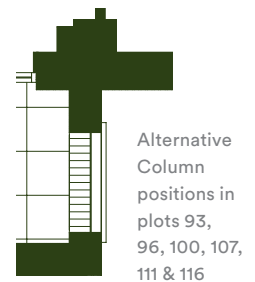
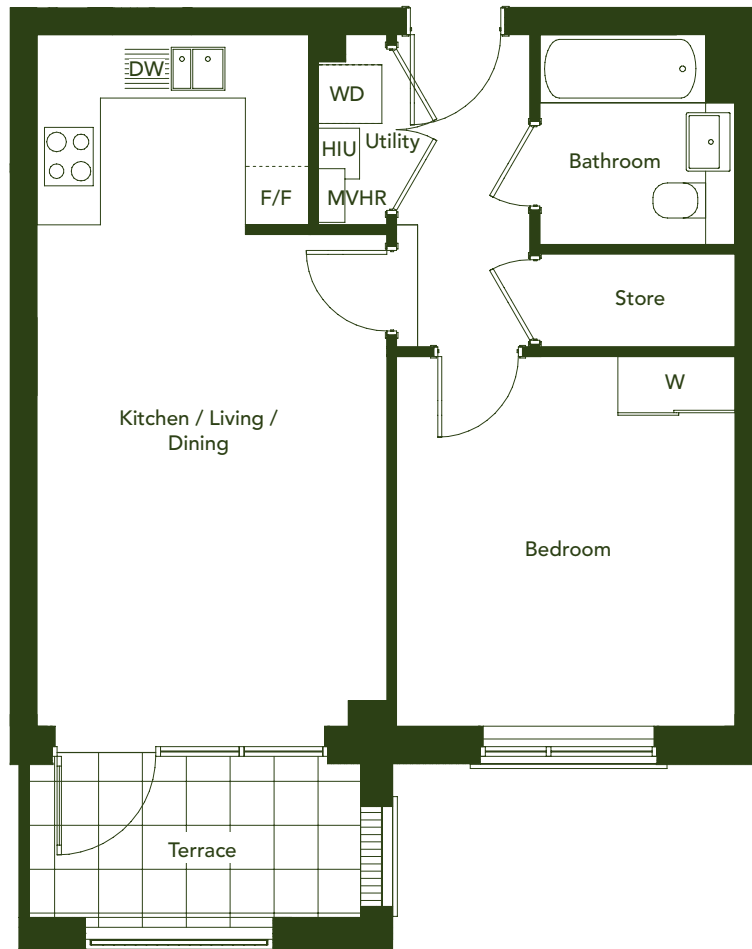


**First Floor:** Plots 80\*, 81, 92\*, 93

**Second Floor:** Plots 83\*, 84, 95\*, 96

**Third Floor:** Plots 87\*, 88, 99\*, 100

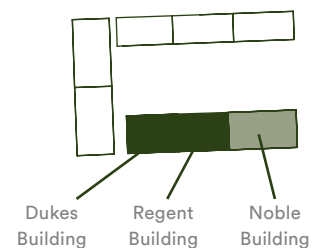
**First, second and third floor**



## Accommodation

Living/Dining/Kitchen	7.30m x 3.58m	23'11" x 11'9"
Bedroom 1	3.83m x 3.51m	12'7" x 11'6"
<b>Total</b>	<b>51m<sup>2</sup></b>	<b>546 ft<sup>2</sup></b>

WC – Cloakroom | W – Wardrobe | F/F – Fridge/Freezer | WD – Washer Dryer | DW – Dish Washer  
 HIU & MVHR – Heat Interface Unit & Mechanical Ventilation with Heat Recovery



\*Denotes houses that are opposite handed/mirror image to the plans drawn. The floor plans provided are intended to only give a general indication of the proposed floor layout, are not drawn to scale and are not intended to form part of any offer, contract, warranty or representation. Measurements are given to the widest point, are approximate and are given as a guide only. They must not be relied upon as a statement or representation of fact. Do not use these measurements for carpet sizes, appliance spaces or items of furniture. Kitchen, bathroom and utility layouts may differ to build, and specific plot sizes and layouts may vary within the same unit type. Window sizes may vary. For further clarification regarding specific individual plots, please ask our Sales Advisors.

**L&Q** at Marleigh  
Cambridge, CB5 8XB

© [marleighso@lqgroup.org.uk](mailto:marleighso@lqgroup.org.uk)

📞 0333 999 8387

🌐 [lqhomes.com/marleigh](http://lqhomes.com/marleigh)



**Disclaimer**

All information in this document is correct at the time of publication going to print March 2021. The contents of this brochure should not be considered material information for the purposes of purchasing a home. No image or photograph (whether computer generated or otherwise) is taken as a statement or representation of fact, and no image or photograph (whether computer generated or otherwise) forms part of any offer, contract, warranty or representation.

**Registered office:** L&Q, 29-35 West Ham Lane, Stratford, London E15 4PH. Homes & Communities Agency L4517.  
Registered Society 30441R Exempt charity. Your home is at risk if you fail to keep up repayments on a mortgage, rent or other loan secured on it. Please make sure you can afford the repayments before you take out a mortgage.