



NEW UNION WHARF

Floor plans and Specification
Shared Ownership

L&Q

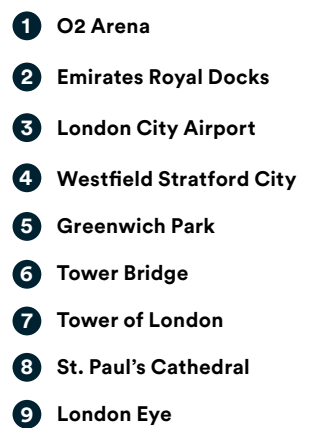
New Union Wharf

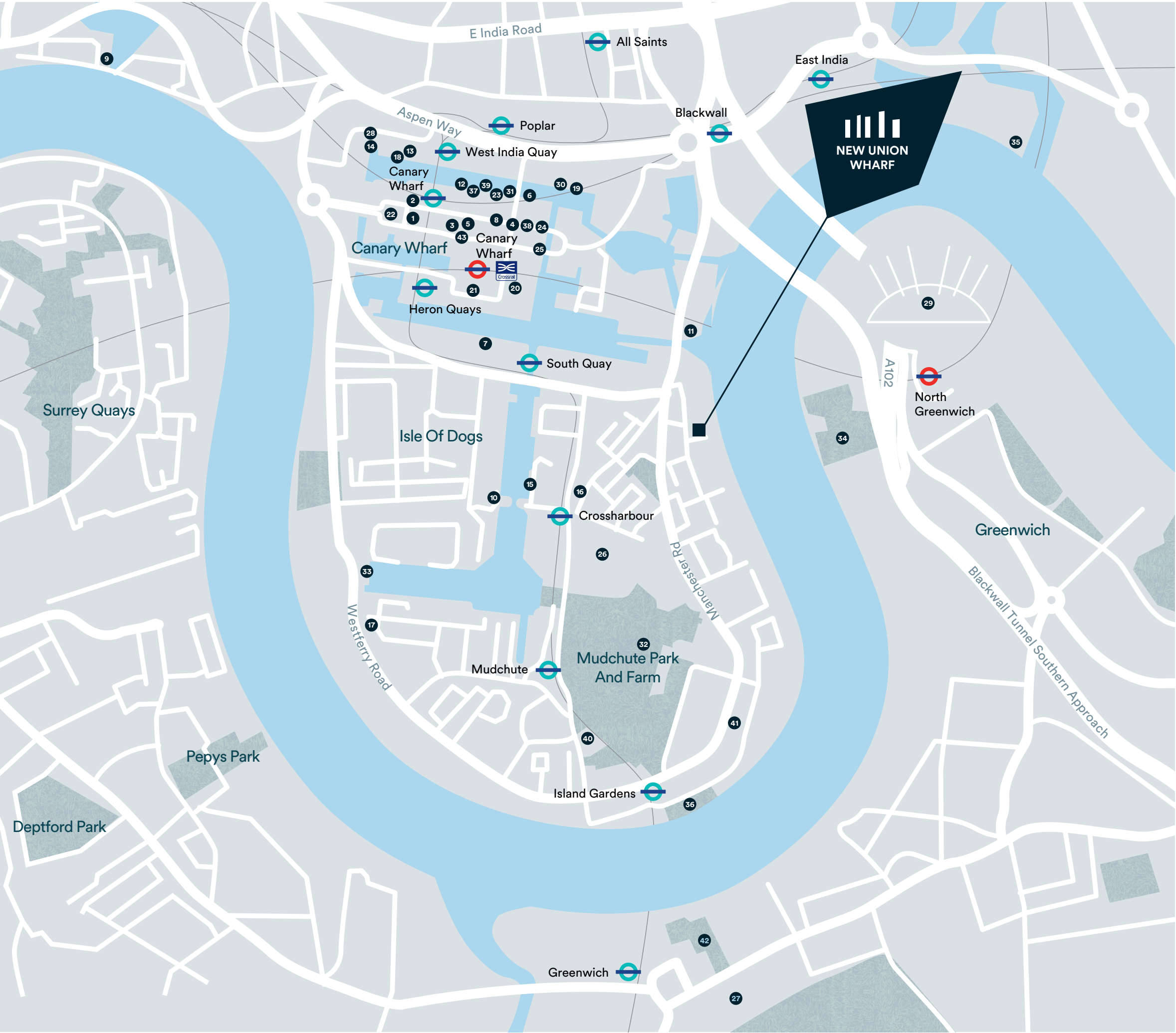
Contemporary and striking riverside development in the heart of a vibrant community on the Isle of Dogs.

Designed with the community in mind, Architects Jestico + Whiles have created a pattern of terraces and blocks around wide streets, landscaped gardens, and inner courtyards that nod to the old East End. Conceived around the principles of modernism, with floor to ceiling windows and carefully imagined interiors, these are apartments that stand out from the crowd.



Find us here E14 3JX





FOOD AND DRINKS

- 1. Boisdale
- 2. Iberica
- 3. One Canada Square
- 4. Plateau
- 5. Roka
- 6. Giant Robot Street Food Market
- 7. Goodman Canary Wharf
- 8. The Ivy – Canary Wharf
- 9. The Narrow by Gordon Ramsay
- 10. Pepper Saint Ontiod
- 11. The Gun
- 12. Big Easy
- 13. Burger and Lobster
- 14. The Sipping Room
- 15. Lotus Chinese Floating Restaurant
- 16. The George
- 17. Hubub Bar & Kitchen
- 18. KERB Street Food Market
- 19. Piggy’s Café
- 20. 640 East

SHOPPING

- 21. Jubilee Place
- 22. Cabot Place
- 23. Crossrail Place
- 24. Canada Place
- 25. Waitrose and John Lewis
- 26. Asda Isle of Dogs Superstore

ATTRACTIONS AND POINTS OF INTEREST

- 27. National Maritime Museum (South of River)
- 28. Museum of London Docklands
- 29. The O2
- 30. Billingsgate Market
- 31. Crossrail Place Roof Garden
- 32. Mudchute Park and Farm
- 33. Docklands Sailing and Watersports Centre
- 34. Greenwich Peninsula Golf Range
- 35. Trinity Buoy Wharf
- 36. Riverside Island Gardens

ENTERTAINMENT AND FITNESS

- 37. Everyman Cinema Canary Wharf
- 38. Third Space Gym and Spa
- 39. Barrys Boot Camp

EDUCATION

- 40. Canary Wharf College, East Ferry Primary (Ofsted Outstanding)
- 41. Canary Wharf College, Glenworth Primary (Ofsted Outstanding)
- 42. University of Greenwich, London (South of River)
- 43. UCL School of Management

Specification

Kitchen



- Contemporary handleless kitchen cabinets with soft close doors and drawers
- LED under cabinet lighting
- Contemporary work surfaces with full height splashback behind hob
- Fixed stainless-steel sink with accompanying spray tap
- Fully integrated appliances including oven, touch control induction hob, dishwasher and fridge/freezer

Bathroom



- Modern white sanitaryware including semi-recessed basin with chrome basin tap
- WC with concealed cistern
- Chrome dual flush plate
- Full height mirror
- Steel bath with bespoke bath panel
- Chrome towel radiator
- Two-way thermostatic mixer valve and overhead shower to the bath
- Shower screen

Ensuites



- Modern white sanitaryware including semi-recessed basin with chrome tap
- WC with concealed cistern
- Chrome dual flush plate
- White shower tray with fixed shower screen
- Thermostatic valve with fixed shower head

Bedroom



- Wool carpet
- Bespoke mirrored wardrobe with chrome hangings rails (Bedroom 1 only)

Wall & Floor Finishes



- White emulsion painted walls and ceilings
- White satin architraves and skirting boards
- LVT (Luxury Vinyl Tiles) in hallways and kitchen/living/dining areas
- Porcelain format floor and wall tiles to bathrooms and ensuites

Heating, Electrical & Lighting



- Thermostatically zonal controlled underfloor heating using combined heat and power system. (subject to supply agreement)
- Low energy white LED downlights to hallway, kitchen/dining/living area and bathrooms
- Pendant lights to bedrooms
- Provision for Sky Q, and Virgin Media (subscription will be required)
- Mains operated ceiling mounted smoke/heat detector

General



- Free standing washer/dryer
- White internal doors
- Stainless steel ironmongery
- Private outside space to every home
- Video door entry system operated via a smart device
- Communal bicycle storage for every home
- NHBC 10-year Warranty



Shared Ownership Show Apartment



Shared Ownership Show Apartment

* Speak to Sales Associate for further details. The specification of the properties is correct at the date of print but may change as building works progress. Any images are indicative of the anticipated quality and style of the specification and may not represent the actual furnishings and fittings of the properties. Unless specifically incorporated in writing into the sales contract the specification is not intended to form part of any offer, contract, warranty or representation and should not be relied upon as a statement or representation of fact. Images depict a typical L&Q home.



Shared Ownership Show Apartment

* Speak to Sales Associate for further details. The specification of the properties is correct at the date of print but may change as building works progress. Any images are indicative of the anticipated quality and style of the specification and may not represent the actual furnishings and fittings of the properties. Unless specifically incorporated in writing into the sales contract the specification is not intended to form part of any offer, contract, warranty or representation and should not be relied upon as a statement or representation of fact. Images depict a typical L&Q home.

Site plan



- Key
- Shared Ownership Available Now
 - Market Sale
 - Affordable Rent
 - Podium
 - Previous Phase

The development layout does not show details of gradients of land, boundary treatments, local authority street lighting or landscaping. It is our intention to build in accordance with this layout. However, there may be occasions when the house designs, boundaries, landscaping and positions of roads and footpaths change as the development proceeds. Please speak to a Sales Associate for more details.

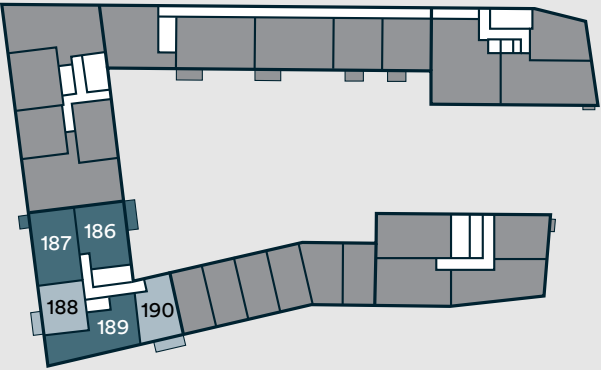
Rambler House



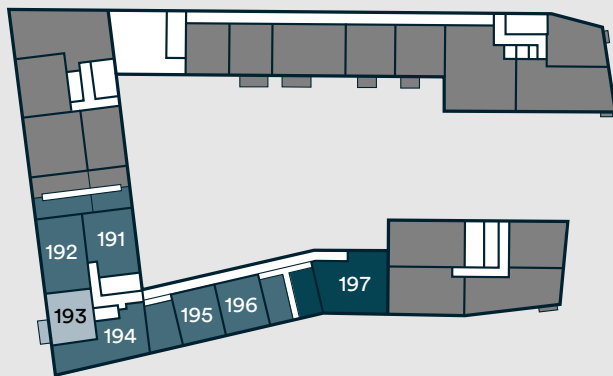
Plot locator



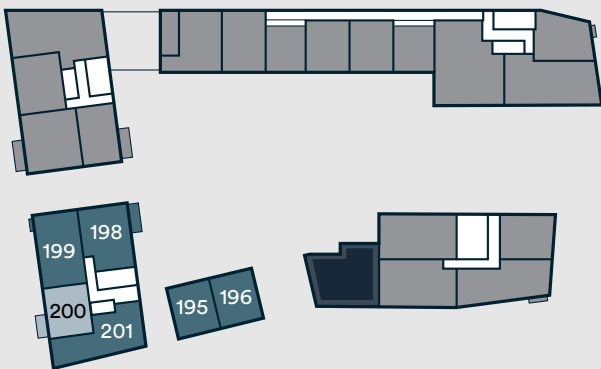
Second Floor



Third Floor



Fourth Floor



Key

- 1 bedroom homes
- 2 bedroom homes
- 3 bedroom homes
- Podium
- Roof

* Roof area is not accessible to residents

The development layout does not show details of gradients of land, boundary treatments, local authority street lighting or landscaping. It is our intention to build in accordance with this layout. However, there may be occasions when the house designs, boundaries, landscaping and positions of roads and footpaths change as the development proceeds. Please speak to a Sales Associate for more details.

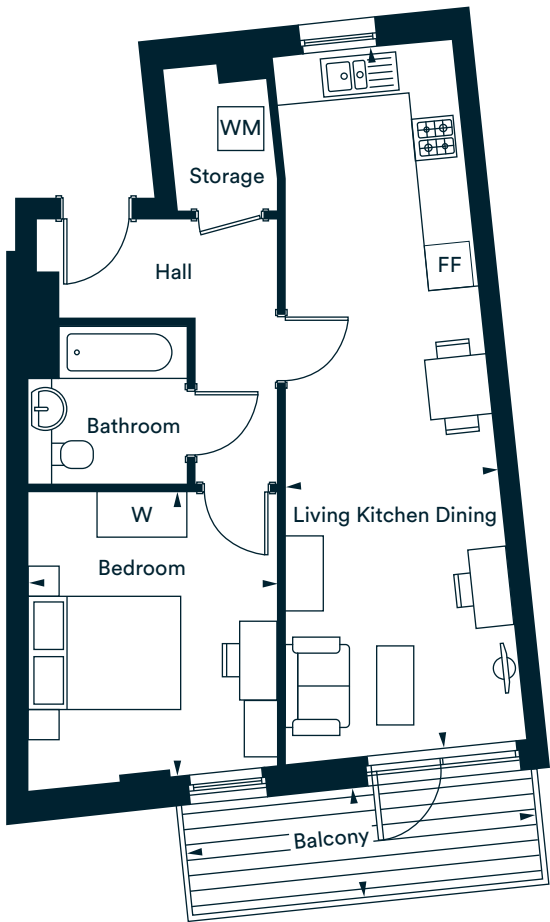
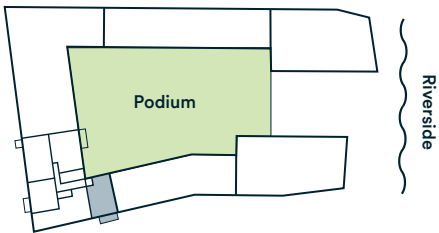
The floor plans provided are intended to only give a general indication of the proposed floor layout, are not drawn to scale and are not intended to form part of any offer, contract, warranty or representation. Measurements are given to the widest point, are approximate and are given as a guide only. They must not be relied upon as a statement or representation of fact. Do not use these measurements for carpet sizes, appliance spaces or items of furniture. Kitchen, bathroom and utility layouts may differ to build, and specific plot sizes and layouts may vary within the same unit type. For further clarification regarding specific individual plots, please ask our Sales Associates.

One bedroom apartments

Apartment type A
Plot 190



Floor 2
Plot 190



Room	Metric	Imperial
Kitchen / Living / Dining	2.80m x 9.33m	9'2 1/2" x 30'7 1/2"
Bedroom	3.30m x 3.77m	10'10" x 12'4"
Total internal area	53 sq m	576 sq ft
Balcony	4.67m x 1.47m	15'3 1/2" x 4'9 1/2"

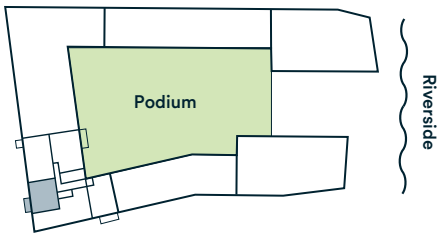
FF | Fridge Freezer WM | Washing Machine W | Wardrobe — | Juliette Balcony
Please be aware the storage cupboard may include heating and electrical controls, which may reduce the storage available. Please ask our Sales Negotiators for more information.

The floor plans provided are intended to only give a general indication of the proposed floor layout, are not drawn to scale and are not intended to form part of any offer, contract, warranty or representation. Measurements are given to the widest point, are approximate and are given as a guide only. They must not be relied upon as a statement or representation of fact. Do not use these measurements for carpet sizes, appliance spaces or items of furniture. Kitchen, bathroom and utility layouts may differ to build, and specific plot sizes and layouts may vary within the same unit type. Window sizes may vary. Please be aware the storage cupboard may include heating and electrical controls, which may reduce the storage available. Please ask sales associate for more information. For further clarification regarding specific individual plots, please ask our Sales Advisors. North pointer applies to plot locator map.

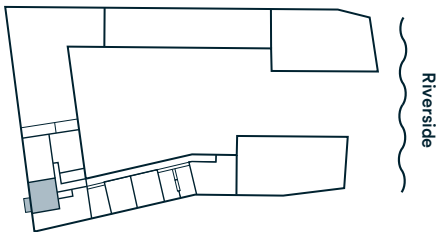
Apartment type B
Plots 188, 193, 200



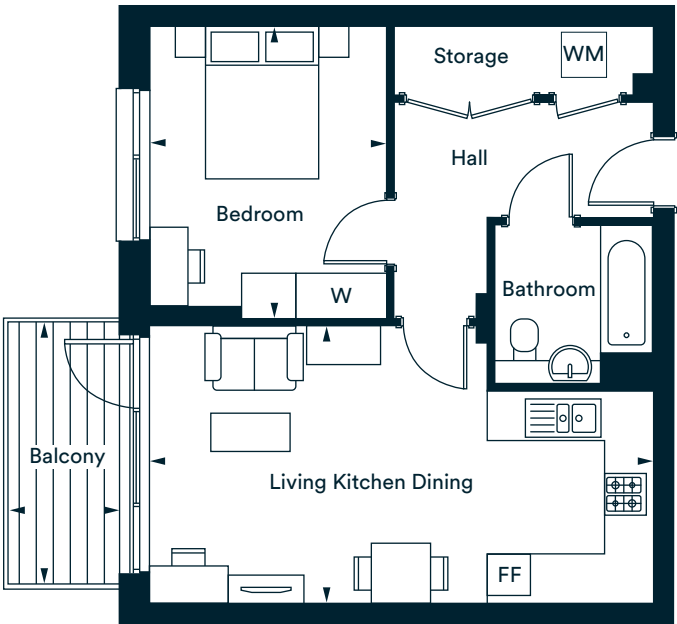
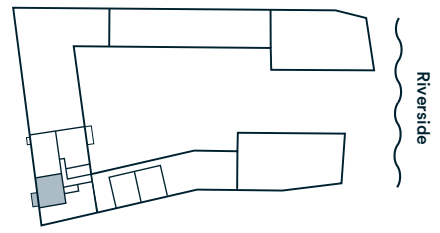
Floor 2
Plot 188



Floor 3
Plot 193



Floor 4
Plot 200



Room	Metric	Imperial
Kitchen / Living / Dining	6.68m x 3.66m	21'11" x 12'0"
Bedroom	3.14m x 3.86m	10'3 1/2" x 12'8"
Total internal area	51 sq m	548 sq ft
Balcony	1.47m x 3.45m	4'9 1/2" x 11'4"

FF | Fridge Freezer WM | Washing Machine W | Wardrobe — | Juliette Balcony
Please be aware the storage cupboard may include heating and electrical controls, which may reduce the storage available. Please ask our Sales Negotiators for more information.

The floor plans provided are intended to only give a general indication of the proposed floor layout, are not drawn to scale and are not intended to form part of any offer, contract, warranty or representation. Measurements are given to the widest point, are approximate and are given as a guide only. They must not be relied upon as a statement or representation of fact. Do not use these measurements for carpet sizes, appliance spaces or items of furniture. Kitchen, bathroom and utility layouts may differ to build, and specific plot sizes and layouts may vary within the same unit type. Window sizes may vary. Please be aware the storage cupboard may include heating and electrical controls, which may reduce the storage available. Please ask sales associate for more information. For further clarification regarding specific individual plots, please ask our Sales Advisors. North pointer applies to plot locator map.

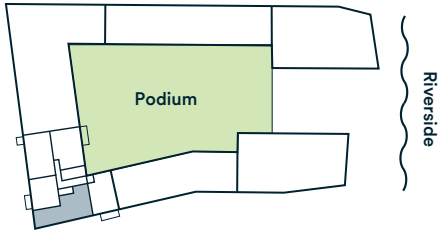
Two bedroom apartments

Apartment type C

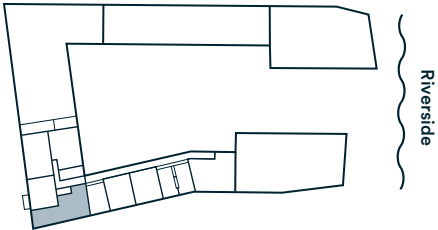
Plots 189, 194, 201



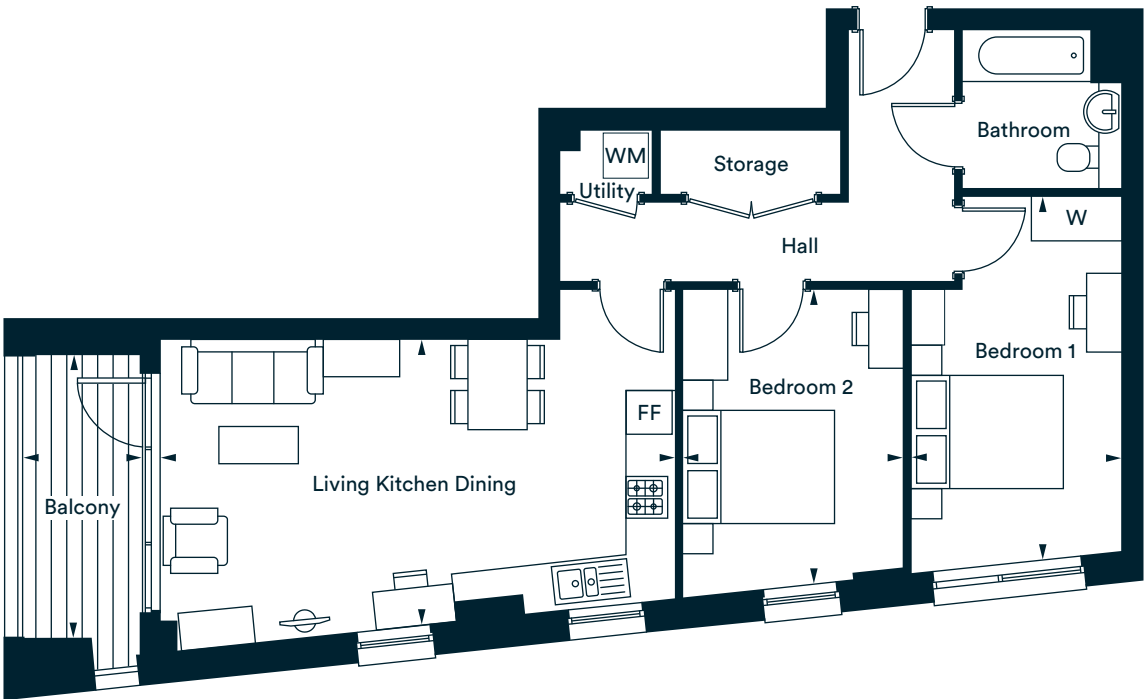
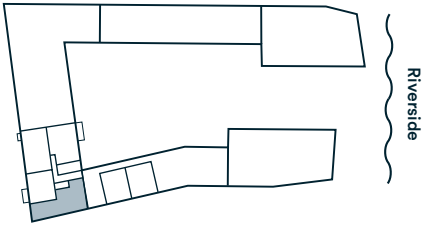
Floor 2
Plot 189



Floor 3
Plot 194



Floor 4
Plot 201



Room	Metric	Imperial
Kitchen / Living / Dining	6.82m x 3.79m	22'4 ¹ / ₂ " x 12'5"
Bedroom 1	2.79m x 4.83m	9'2" x 15'10"
Bedroom 2	2.92m x 3.91m	9'7" x 12'10"
Total internal area	70 sq m	750 sq ft
Balcony	1.57m x 3.75m	5'2" x 12'4"

FF | Fridge Freezer WM | Washing Machine W | Wardrobe — | Juliette Balcony

Please be aware the storage cupboard may include heating and electrical controls, which may reduce the storage available. Please ask our Sales Associates for more information.

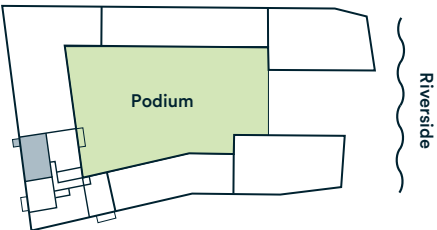
The floor plans provided are intended to only give a general indication of the proposed floor layout, are not drawn to scale and are not intended to form part of any offer, contract, warranty or representation. Measurements are given to the widest point, are approximate and are given as a guide only. They must not be relied upon as a statement or representation of fact. Do not use these measurements for carpet sizes, appliance spaces or items of furniture. Kitchen, bathroom and utility layouts may differ to build, and specific plot sizes and layouts may vary within the same unit type. Window sizes may vary. Please be aware the storage cupboard may include heating and electrical controls, which may reduce the storage available. Please ask sales associate for more information. For further clarification regarding specific individual plots, please ask our Sales associate. North pointer applies to plot locator map.

Apartment type D

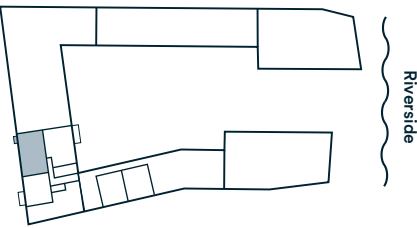
Plot 187*, 199**



Floor 2
Plot 187



Floor 4
Plot 199



Room	Metric	Imperial
Kitchen / Living / Dining	6.68m x 5.42m	21'11" x 17'9 ¹ / ₂ "
Bedroom 1	4.48m x 2.75m	14'8" x 9'0 ¹ / ₂ "
Bedroom 2	4.48m x 2.85m	14'8" x 9'4"
Total internal area*	71 sq m	764 sq ft
Total internal area**	71 sq m	766 sq ft
Balcony * 187	3.07m x 2.02m	10'1" x 6'7 ¹ / ₂ "
Balcony ** 199	2.07m x 2.44m	6'9 ¹ / ₂ " x 8'0"

FF | Fridge Freezer WM | Washing Machine W | Wardrobe — | Juliette Balcony

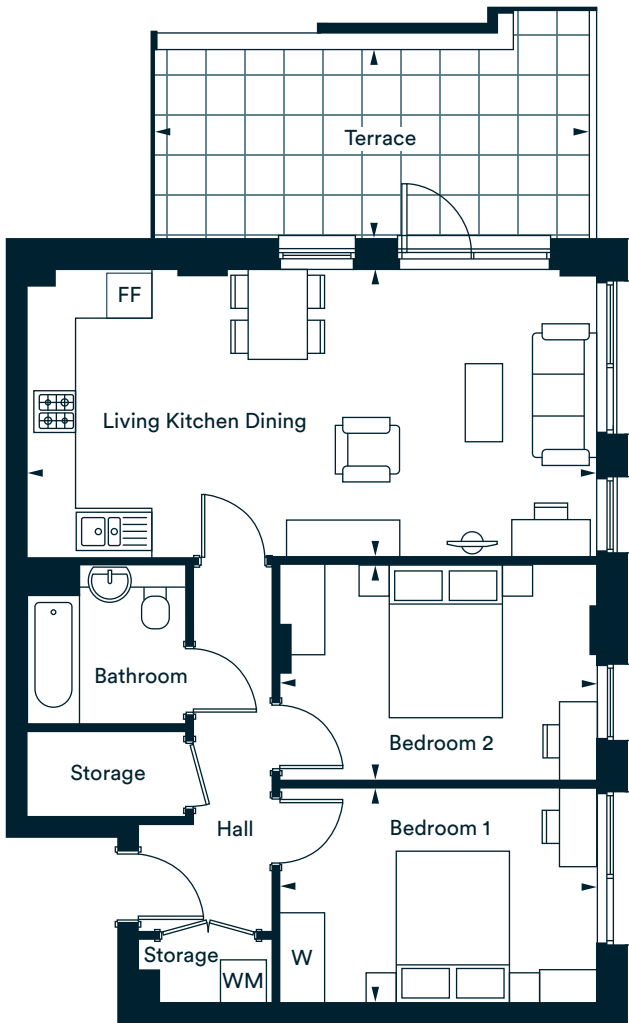
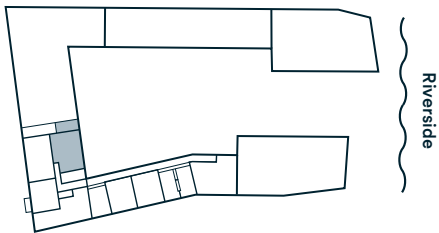
Please be aware the storage cupboard may include heating and electrical controls, which may reduce the storage available. Please ask our Sales Associates for more information.

The floor plans provided are intended to only give a general indication of the proposed floor layout, are not drawn to scale and are not intended to form part of any offer, contract, warranty or representation. Measurements are given to the widest point, are approximate and are given as a guide only. They must not be relied upon as a statement or representation of fact. Do not use these measurements for carpet sizes, appliance spaces or items of furniture. Kitchen, bathroom and utility layouts may differ to build, and specific plot sizes and layouts may vary within the same unit type. Window sizes may vary. Please be aware the storage cupboard may include heating and electrical controls, which may reduce the storage available. Please ask sales associate for more information. For further clarification regarding specific individual plots, please ask our Sales associate. North pointer applies to plot locator map.

Apartment type E
Plot 191



Floor 3
Plot 191



Room	Metric	Imperial
Kitchen / Living / Dining	7.55m x 3.82m	24'9" x 12'6 ¹ / ₂ "
Bedroom 1	4.20m x 2.83m	13'9 ¹ / ₂ " x 9'3 ¹ / ₂ "
Bedroom 2	4.20m x 2.85m	13'9 ¹ / ₂ " x 9'4"
Total internal area	70 sq m	749 sq ft
Terrace	5.76m x 2.50m	18'10 ¹ / ₂ " x 8'2 ¹ / ₂ "

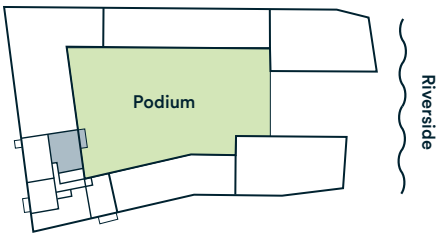
FF | Fridge Freezer WM | Washing Machine W | Wardrobe — | Juliette Balcony
Please be aware the storage cupboard may include heating and electrical controls, which may reduce the storage available. Please ask our Sales Negotiators for more information.

The floor plans provided are intended to only give a general indication of the proposed floor layout, are not drawn to scale and are not intended to form part of any offer, contract, warranty or representation. Measurements are given to the widest point, are approximate and are given as a guide only. They must not be relied upon as a statement or representation of fact. Do not use these measurements for carpet sizes, appliance spaces or items of furniture. Kitchen, bathroom and utility layouts may differ to build, and specific plot sizes and layouts may vary within the same unit type. Window sizes may vary. Please be aware the storage cupboard may include heating and electrical controls, which may reduce the storage available. Please ask sales associate for more information. For further clarification regarding specific individual plots, please ask our Sales Advisors. North pointer applies to plot locator map.

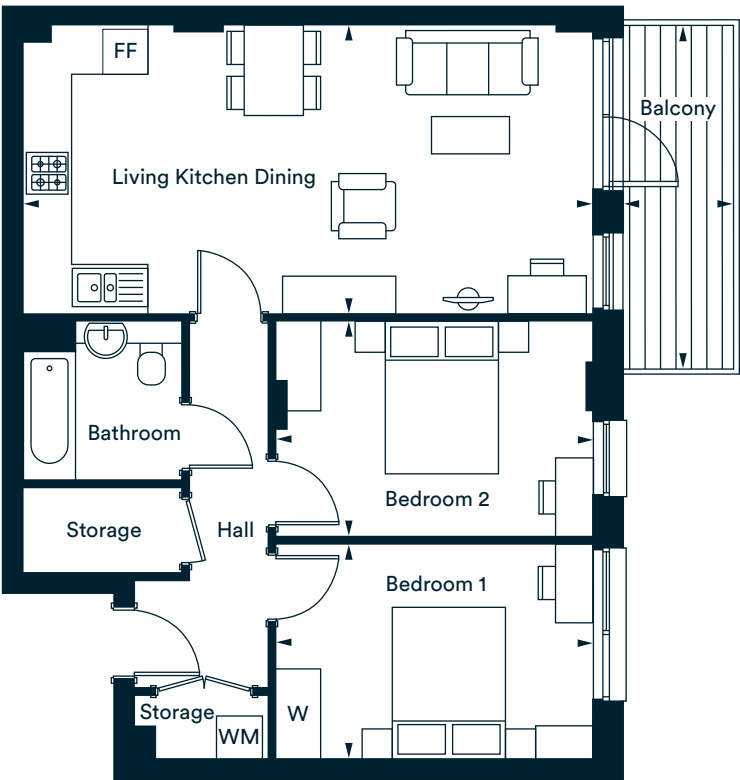
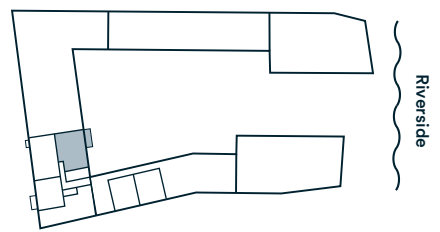
Apartment type E1
Plot 186, 198



Floor 2
Plot 186



Floor 4
Plot 198

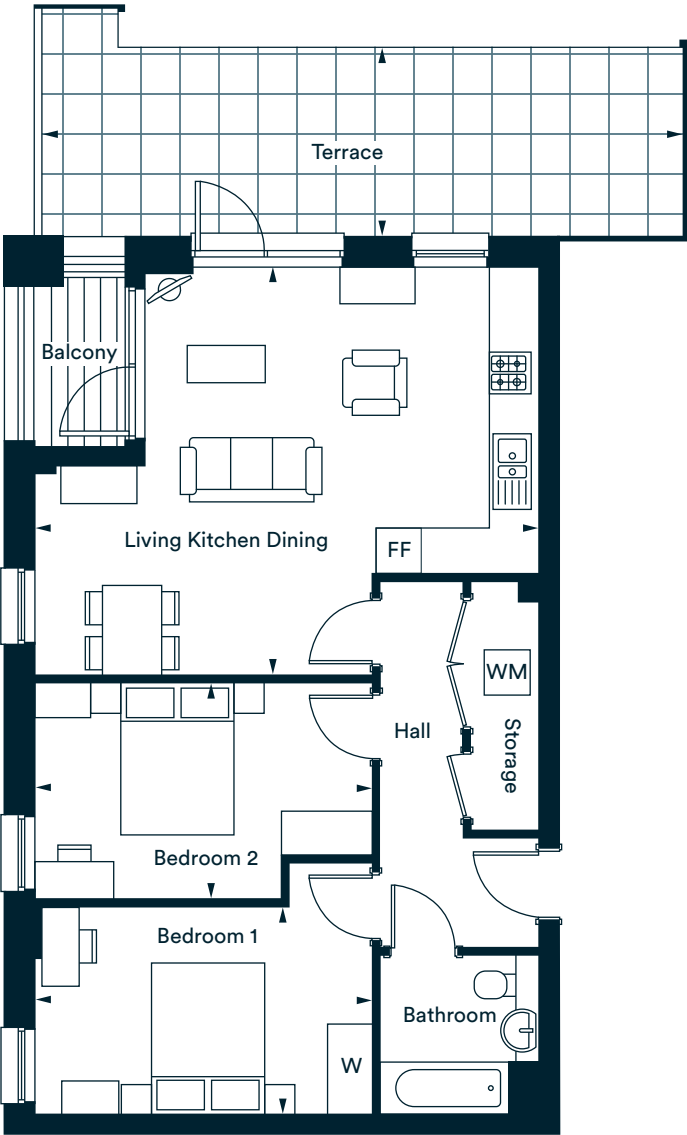


Room	Metric	Imperial
Kitchen / Living / Dining	7.55m x 3.82m	24'9" x 12'6 ¹ / ₂ "
Bedroom 1	4.20m x 2.83m	13'9 ¹ / ₂ " x 9'3 ¹ / ₂ "
Bedroom 2	4.20m x 2.85m	13'9 ¹ / ₂ " x 9'4"
Total internal area	70 sq m	749 sq ft
Balcony	1.47m x 4.51m	4'10 ¹ / ₄ " x 9'1/2"

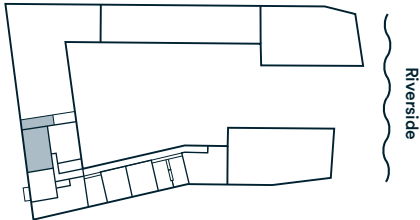
FF | Fridge Freezer WM | Washing Machine W | Wardrobe — | Juliette Balcony
Please be aware the storage cupboard may include heating and electrical controls, which may reduce the storage available. Please ask our Sales Negotiators for more information.

The floor plans provided are intended to only give a general indication of the proposed floor layout, are not drawn to scale and are not intended to form part of any offer, contract, warranty or representation. Measurements are given to the widest point, are approximate and are given as a guide only. They must not be relied upon as a statement or representation of fact. Do not use these measurements for carpet sizes, appliance spaces or items of furniture. Kitchen, bathroom and utility layouts may differ to build, and specific plot sizes and layouts may vary within the same unit type. Window sizes may vary. Please be aware the storage cupboard may include heating and electrical controls, which may reduce the storage available. Please ask sales associate for more information. For further clarification regarding specific individual plots, please ask our Sales Advisors. North pointer applies to plot locator map.

Apartment type F
Plot 192



Floor 3
Plot 192

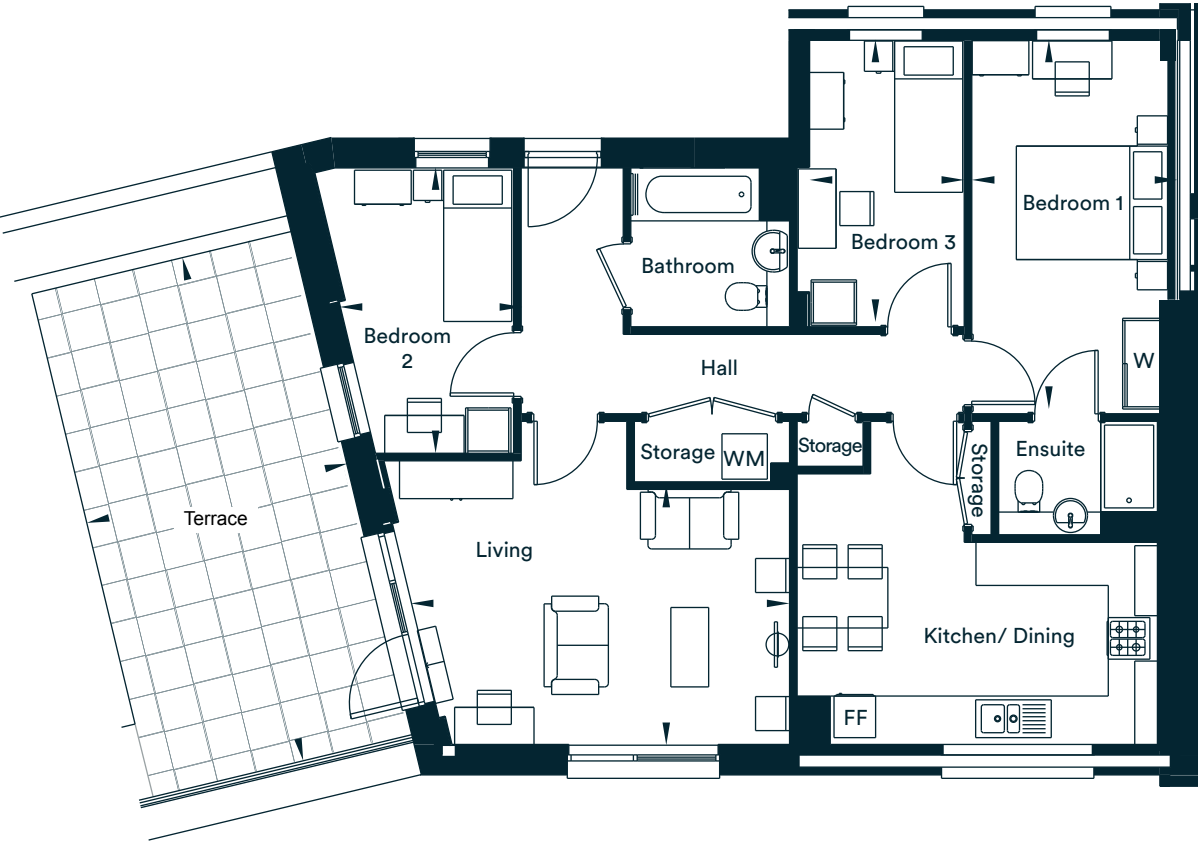


Room	Metric	Imperial
Kitchen / Living / Dining	6.68m x 5.42m	21'11" x 17'9 1/2"
Bedroom 1	4.48m x 2.75m	14'8" x 9'0 1/2"
Bedroom 2	4.48m x 2.85m	14'8" x 9'4"
Total internal area	71 m	764 ft
Terrace	8.48m x 2.50m	27'10" x 8'2 1/2"
Balcony	1.34m x 2.21m	4'4 1/2" x 7'3"

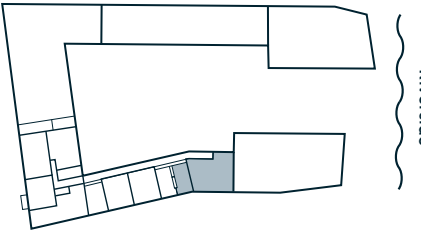
FF | Fridge Freezer WM | Washing Machine W | Wardrobe — | Juliette Balcony
Please be aware the storage cupboard may include heating and electrical controls, which may reduce the storage available. Please ask our Sales Negotiators for more information.

The floor plans provided are intended to only give a general indication of the proposed floor layout, are not drawn to scale and are not intended to form part of any offer, contract, warranty or representation. Measurements are given to the widest point, are approximate and are given as a guide only. They must not be relied upon as a statement or representation of fact. Do not use these measurements for carpet sizes, appliance spaces or items of furniture. Kitchen, bathroom and utility layouts may differ to build, and specific plot sizes and layouts may vary within the same unit type. Window sizes may vary. Please be aware the storage cupboard may include heating and electrical controls, which may reduce the storage available. Please ask sales associate for more information. For further clarification regarding specific individual plots, please ask our Sales Advisors. North pointer applies to plot locator map.

Three bedroom apartment
Apartment type G
Plot 197



Floor 3
Plot 197



Room	Metric	Imperial
Kitchen / Dining		
Living	5.01m x 3.45m	16'5 1/2" x 11'3 1/2"
Bedroom 1	2.72m x 4.88m	8'11" x 16'0 1/2"
Bedroom 2	2.42m x 3.78m	7'11" x 12'5"
Bedroom 3	2.05m x 3.73m	6'8 1/2" x 12'3"
Total internal area	88 sq m	943 sq ft
Terrace	3.53m x 6.84m	11'7" x 22'5 1/2"

FF | Fridge Freezer WM | Washing Machine W | Wardrobe — | Juliette Balcony
Please be aware the storage cupboard may include heating and electrical controls, which may reduce the storage available. Please ask our Sales Negotiators for more information.

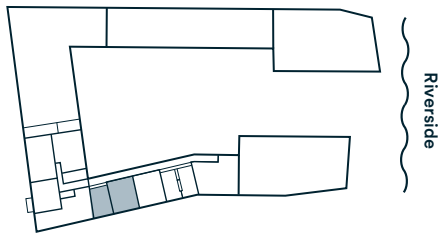
The floor plans provided are intended to only give a general indication of the proposed floor layout, are not drawn to scale and are not intended to form part of any offer, contract, warranty or representation. Measurements are given to the widest point, are approximate and are given as a guide only. They must not be relied upon as a statement or representation of fact. Do not use these measurements for carpet sizes, appliance spaces or items of furniture. Kitchen, bathroom and utility layouts may differ to build, and specific plot sizes and layouts may vary within the same unit type. Window sizes may vary. Please be aware the storage cupboard may include heating and electrical controls, which may reduce the storage available. Please ask sales associate for more information. For further clarification regarding specific individual plots, please ask our Sales Advisors. North pointer applies to plot locator map.

Two bedroom maisonettes

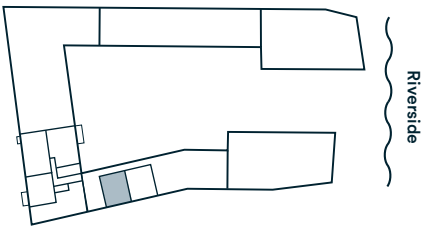
Apartment type H
Plot 195



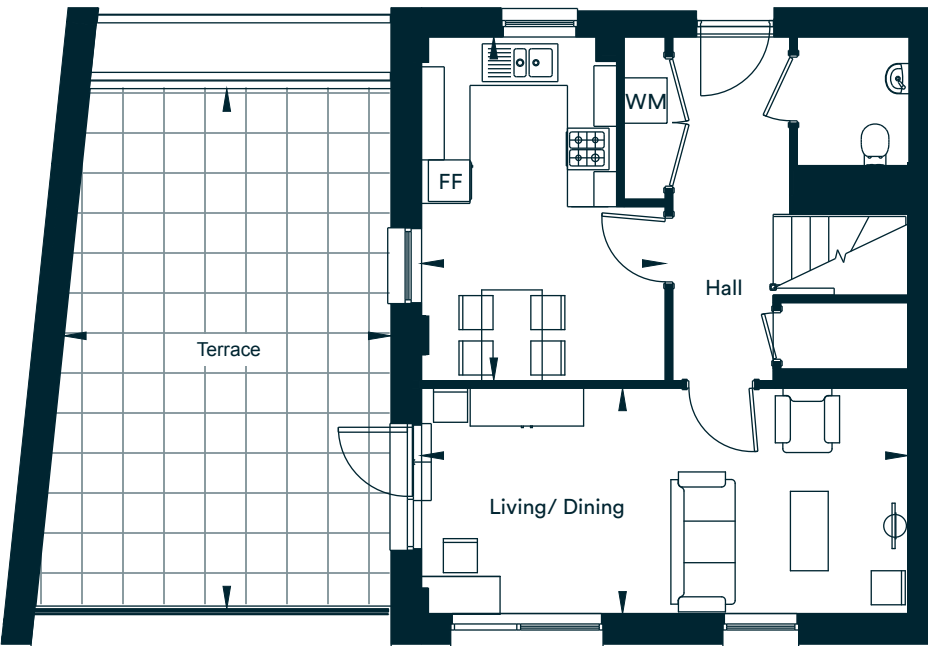
Floor 3
Plot 195



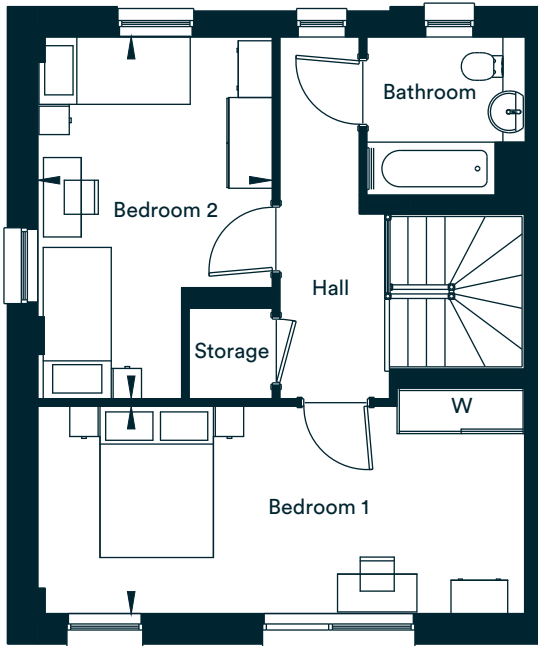
Floor 4
Plot 195



Third Floor



Fourth Floor



Room	Metric	Imperial
Kitchen / Dining	3.23m x 4.55m	10'7" x 14'11½"
Living	6.45m x 2.99m	21'2" x 9'10"
Bedroom 1	6.44m x 2.75m	21'1½" x 9'0½"
Bedroom 2	3.11m x 4.79m	10'2½" x 15'8½"
Total internal area	99 sq m	1066 sq ft
Terrace	4.33m x 6.88m	14'2½" x 22'7"

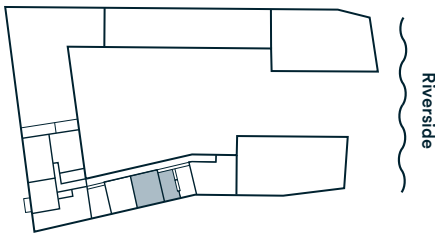
FF | Fridge Freezer WM | Washing Machine W | Wardrobe — | Juliette Balcony
Please be aware the storage cupboard may include heating and electrical controls, which may reduce the storage available. Please ask our Sales Associates for more information.

The floor plans provided are intended to only give a general indication of the proposed floor layout, are not drawn to scale and are not intended to form part of any offer, contract, warranty or representation. Measurements are given to the widest point, are approximate and are given as a guide only. They must not be relied upon as a statement or representation of fact. Do not use these measurements for carpet sizes, appliance spaces or items of furniture. Kitchen, bathroom and utility layouts may differ to build, and specific plot sizes and layouts may vary within the same unit type. Window sizes may vary. Please be aware the storage cupboard may include heating and electrical controls, which may reduce the storage available. Please ask sales associate for more information. For further clarification regarding specific individual plots, please ask our Sales associate. North pointer applies to plot locator map.

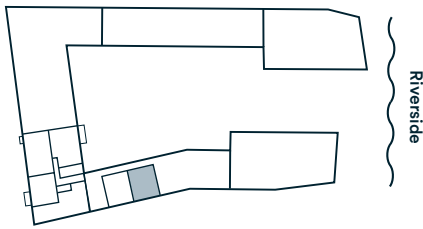
Apartment type J
Plot 196



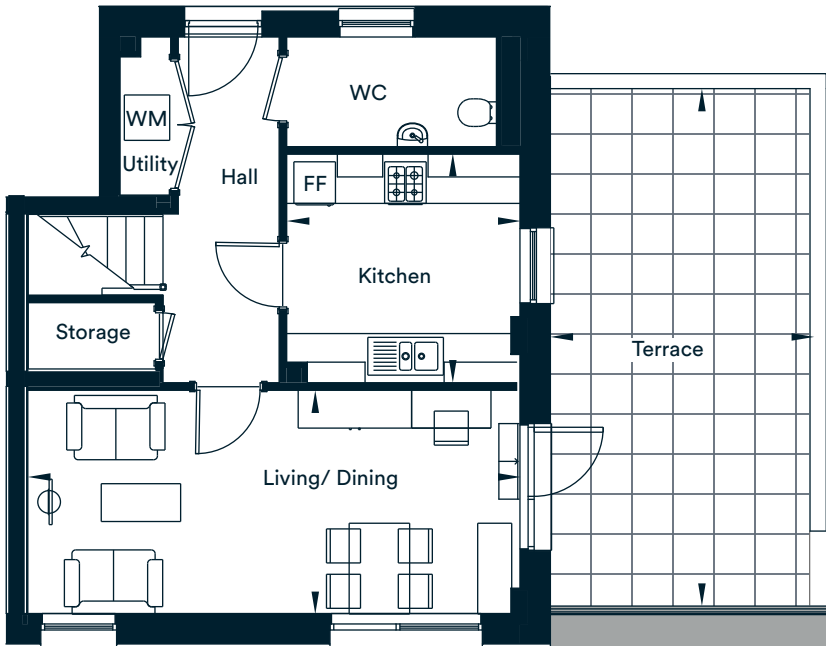
Floor 3
Plot 196



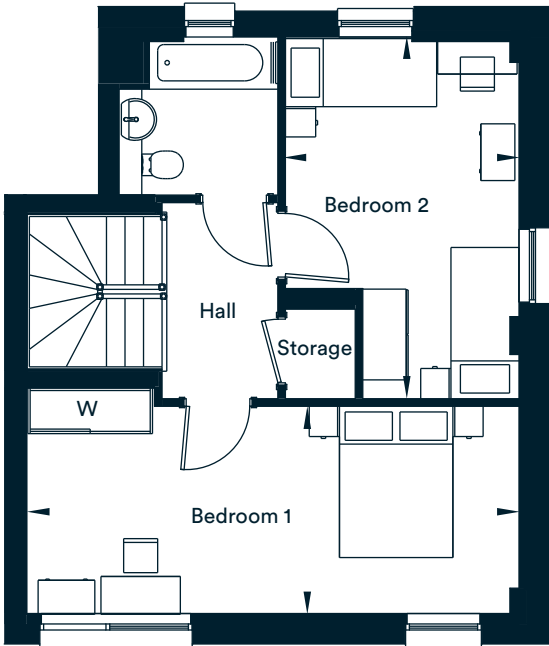
Floor 4
Plot 196



Third Floor



Fourth Floor



Room	Metric	Imperial
Kitchen	3.10m x 3.03m	10'2" x 9'11½"
Living/Dining	6.52m x 2.96m	21'4½" x 9'8½"
Bedroom 1	6.52m x 2.75m	21'4½" x 9'0½"
Bedroom 2	3.12m x 4.79m	10'3" x 15'8½"
Total internal area	94 sq m	1012 sq ft
Terrace	3.49m x 6.84m	11'5½" x 22'5½"

FF | Fridge Freezer WM | Washing Machine W | Wardrobe — | Juliette Balcony
Please be aware the storage cupboard may include heating and electrical controls, which may reduce the storage available. Please ask our Sales Associates for more information.

The floor plans provided are intended to only give a general indication of the proposed floor layout, are not drawn to scale and are not intended to form part of any offer, contract, warranty or representation. Measurements are given to the widest point, are approximate and are given as a guide only. They must not be relied upon as a statement or representation of fact. Do not use these measurements for carpet sizes, appliance spaces or items of furniture. Kitchen, bathroom and utility layouts may differ to build, and specific plot sizes and layouts may vary within the same unit type. Window sizes may vary. Please be aware the storage cupboard may include heating and electrical controls, which may reduce the storage available. Please ask sales associate for more information. For further clarification regarding specific individual plots, please ask our Sales associate. North pointer applies to plot locator map.

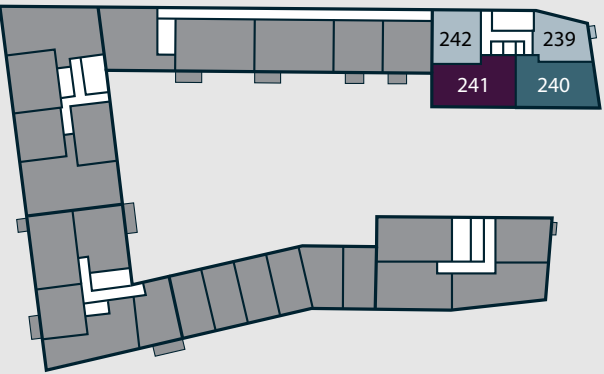
Reliance House



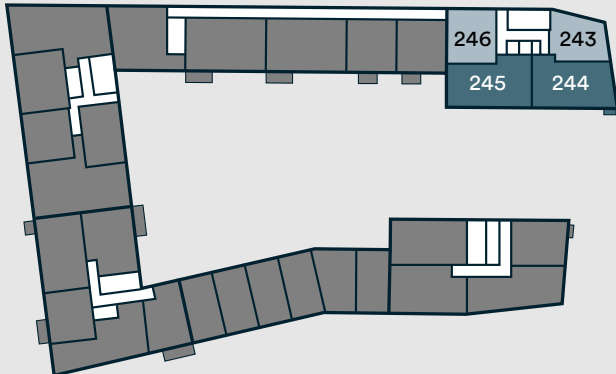
Plot locator



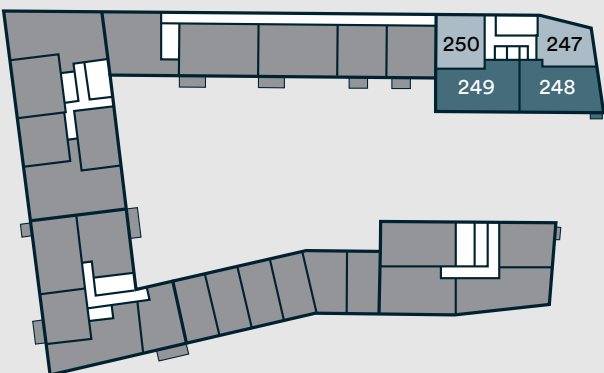
Eighth Floor



Ninth Floor



Tenth Floor



Key

- 1 bedroom homes
- 2 bedroom homes
- 3 bedroom homes
- Social rent unit
- Podium
- Roof

* Roof area is not accessible to residents

The development layout does not show details of gradients of land, boundary treatments, local authority street lighting or landscaping. It is our intention to build in accordance with this layout. However, there may be occasions when the house designs, boundaries, landscaping and positions of roads and footpaths change as the development proceeds. Please speak to a Sales Associate for more details.

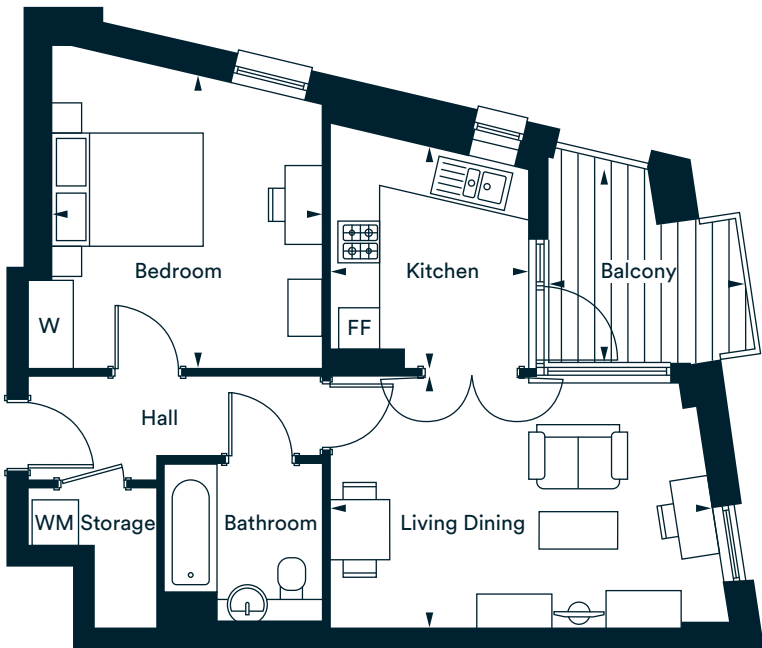
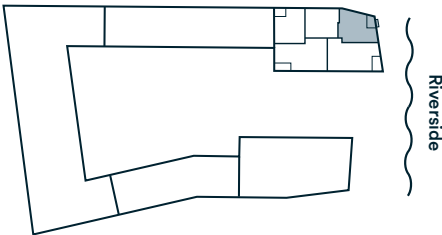
The floor plans provided are intended to only give a general indication of the proposed floor layout, are not drawn to scale and are not intended to form part of any offer, contract, warranty or representation. Measurements are given to the widest point, are approximate and are given as a guide only. They must not be relied upon as a statement or representation of fact. Do not use these measurements for carpet sizes, appliance spaces or items of furniture. Kitchen, bathroom and utility layouts may differ to build, and specific plot sizes and layouts may vary within the same unit type. For further clarification regarding specific individual plots, please ask our Sales Associates.

One bedroom apartments

Apartment type A
Plot 239



Floor 8
Plot 239



Room	Metric	Imperial
Kitchen	2.62m x 2.94m	8'7 ¹ / ₂ " x 9'7 ¹ / ₂ "
Living / Dining	5.05m x 3.33m	16'7" x 10'11"
Bedroom	3.58m x 3.89m	11'9" x 12'9"
Total internal area	53 sq m	576 sq ft
Balcony	2.60m x 2.57m	8'6 ¹ / ₂ " x 8'5"

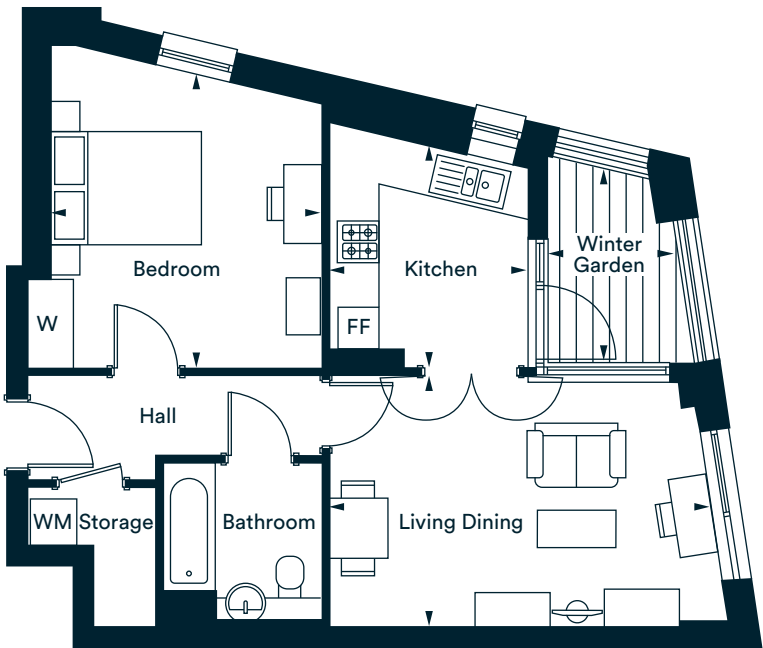
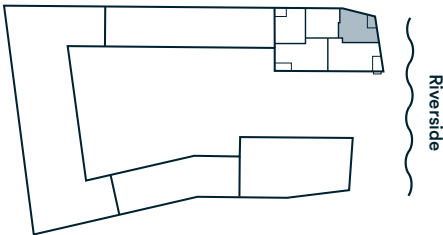
FF | Fridge Freezer WM | Washing Machine W | Wardrobe — | Juliette Balcony
Please be aware the storage cupboard may include heating and electrical controls, which may reduce the storage available. Please ask our Sales Negotiators for more information.

The floor plans provided are intended to only give a general indication of the proposed floor layout, are not drawn to scale and are not intended to form part of any offer, contract, warranty or representation. Measurements are given to the widest point, are approximate and are given as a guide only. They must not be relied upon as a statement or representation of fact. Do not use these measurements for carpet sizes, appliance spaces or items of furniture. Kitchen, bathroom and utility layouts may differ to build, and specific plot sizes and layouts may vary within the same unit type. Window sizes may vary. Please be aware the storage cupboard may include heating and electrical controls, which may reduce the storage available. Please ask sales associate for more information. For further clarification regarding specific individual plots, please ask our Sales Advisors. North pointer applies to plot locator map.

Apartment type A1
Plots 243, 247



Floor 9
Plot 243

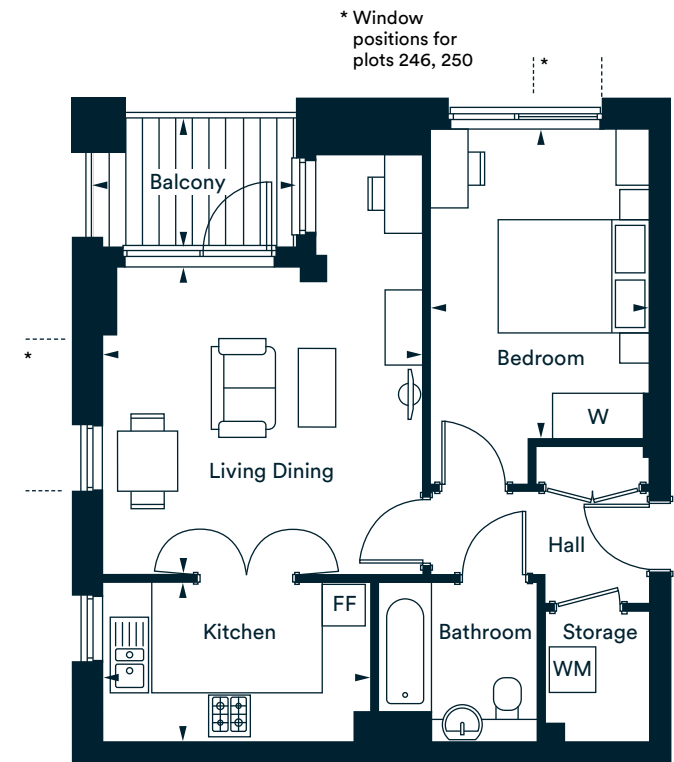


Room	Metric	Imperial
Kitchen	2.62m x 2.94m	8'7 ¹ / ₂ " x 9'7 ¹ / ₂ "
Living / Dining	5.05m x 3.33m	16'7" x 10'11"
Bedroom	3.58m x 3.89m	11'9" x 12'9"
Total internal area	53 sq m	576 sq ft
Winter Garden	1.72m x 2.57m	5'7 ¹ / ₂ " x 8'5"

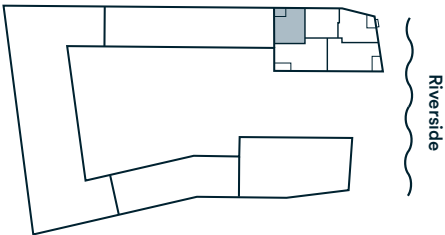
FF | Fridge Freezer WM | Washing Machine W | Wardrobe — | Juliette Balcony
Please be aware the storage cupboard may include heating and electrical controls, which may reduce the storage available. Please ask our Sales Negotiators for more information.

The floor plans provided are intended to only give a general indication of the proposed floor layout, are not drawn to scale and are not intended to form part of any offer, contract, warranty or representation. Measurements are given to the widest point, are approximate and are given as a guide only. They must not be relied upon as a statement or representation of fact. Do not use these measurements for carpet sizes, appliance spaces or items of furniture. Kitchen, bathroom and utility layouts may differ to build, and specific plot sizes and layouts may vary within the same unit type. Window sizes may vary. Please be aware the storage cupboard may include heating and electrical controls, which may reduce the storage available. Please ask sales associate for more information. For further clarification regarding specific individual plots, please ask our Sales Advisors. North pointer applies to plot locator map.

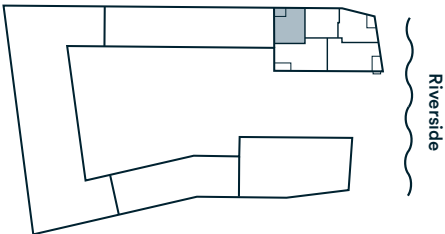
Apartment type B
Plots 242, 246*, 250*



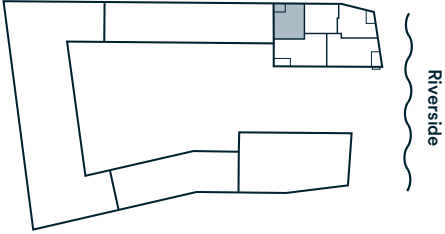
Floor 8
Plot 242



Floor 9
Plot 246*



Floor 10
Plot 250*

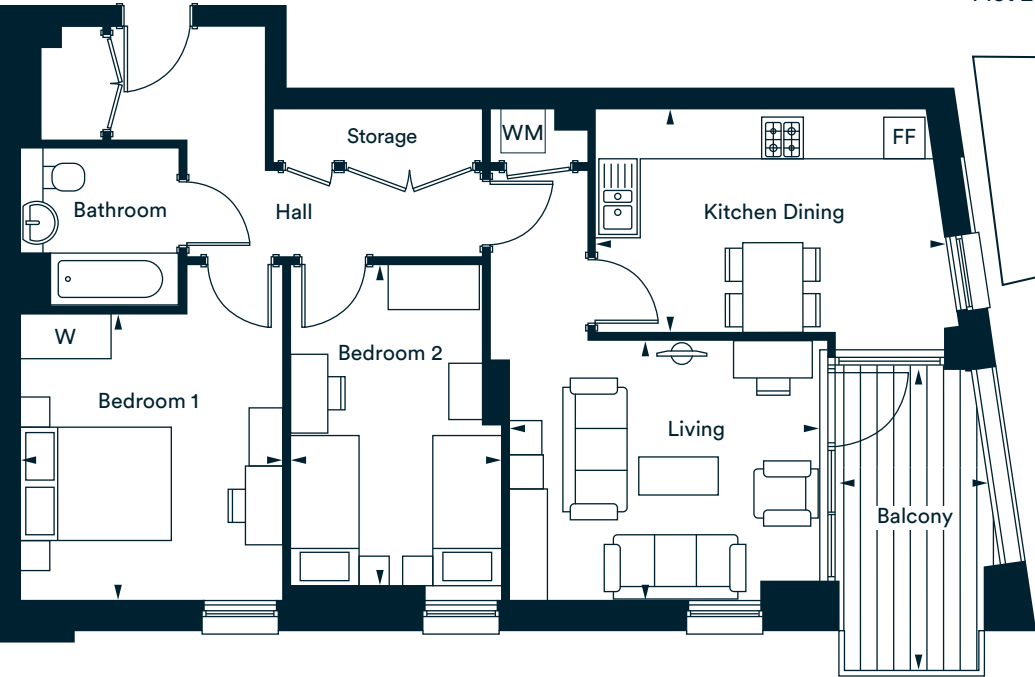


Room	Metric	Imperial
Kitchen	3.58m x 2.11m	11'9" x 6'11"
Living / Dining	4.26m x 4.07m	14'0" x 13'4 1/2"
Bedroom	2.90m x 4.11m	9'6" x 13'5 1/2"
Total internal area	54 sq m	578 sq ft
Balcony	2.71m x 1.71m	8'10 1/2" x 5'7 1/2"

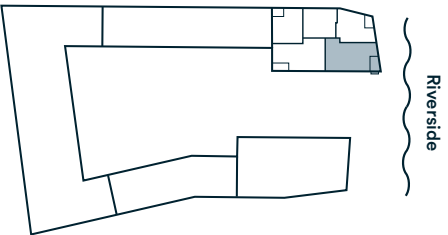
FF | Fridge Freezer WM | Washing Machine W | Wardrobe — | Juliette Balcony
Please be aware the storage cupboard may include heating and electrical controls, which may reduce the storage available. Please ask our Sales Negotiators for more information.

The floor plans provided are intended to only give a general indication of the proposed floor layout, are not drawn to scale and are not intended to form part of any offer, contract, warranty or representation. Measurements are given to the widest point, are approximate and are given as a guide only. They must not be relied upon as a statement or representation of fact. Do not use these measurements for carpet sizes, appliance spaces or items of furniture. Kitchen, bathroom and utility layouts may differ to build, and specific plot sizes and layouts may vary within the same unit type. Window sizes may vary. Please be aware the storage cupboard may include heating and electrical controls, which may reduce the storage available. Please ask sales associate for more information. For further clarification regarding specific individual plots, please ask our Sales Advisors. North pointer applies to plot locator map.

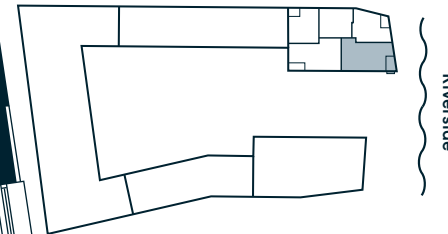
Two bedroom apartments
Apartment type C
Plots 244, 248



Floor 9
Plot 244



Floor 10
Plot 248



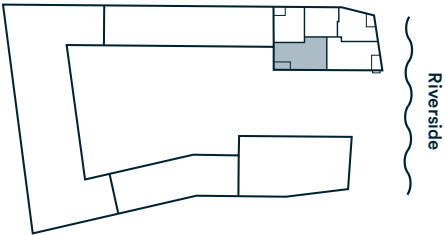
Room	Metric	Imperial
Living	4.12m x 3.45m	13'6" x 11'3 1/2"
Kitchen / Dining	4.63m x 2.96m	15'2" x 9'8 1/2"
Bedroom 1	3.48m x 3.80m	11'5" x 12'5 1/2"
Bedroom 2	2.78m x 4.24m	9'1 1/2" x 13'11"
Total internal area	78 sq m	836 sq ft
Balcony	1.97m x 3.99m	6'5 1/2" x 13'1"

FF | Fridge Freezer WM | Washing Machine W | Wardrobe — | Juliette Balcony
Please be aware the storage cupboard may include heating and electrical controls, which may reduce the storage available. Please ask our Sales Negotiators for more information.

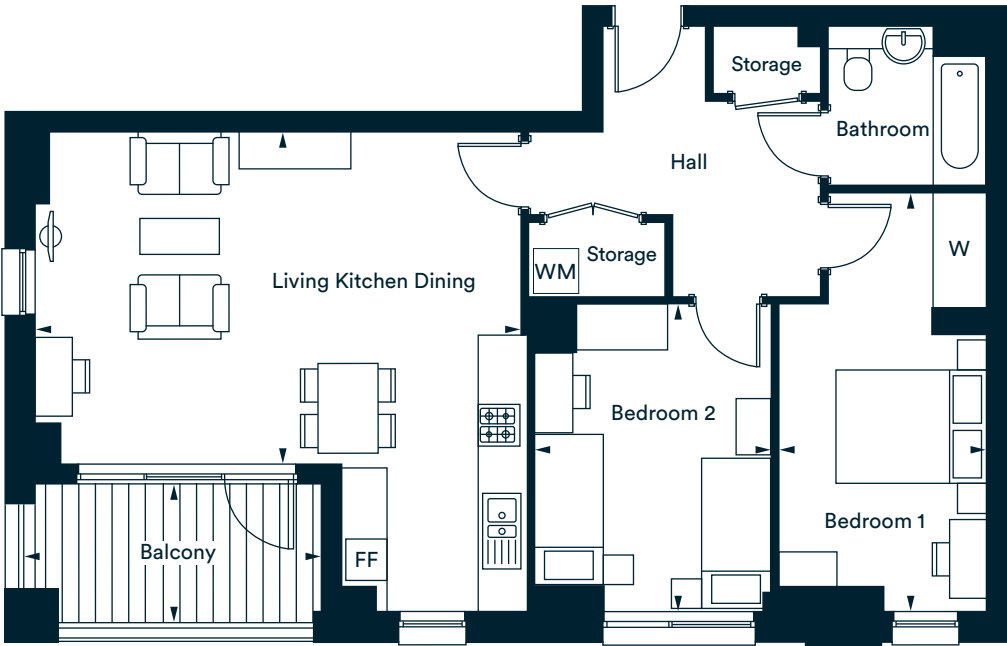
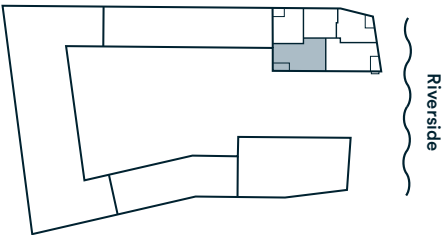
The floor plans provided are intended to only give a general indication of the proposed floor layout, are not drawn to scale and are not intended to form part of any offer, contract, warranty or representation. Measurements are given to the widest point, are approximate and are given as a guide only. They must not be relied upon as a statement or representation of fact. Do not use these measurements for carpet sizes, appliance spaces or items of furniture. Kitchen, bathroom and utility layouts may differ to build, and specific plot sizes and layouts may vary within the same unit type. Window sizes may vary. Please be aware the storage cupboard may include heating and electrical controls, which may reduce the storage available. Please ask sales associate for more information. For further clarification regarding specific individual plots, please ask our Sales Advisors. North pointer applies to plot locator map.

Apartment type D
Plots 245, 249

Floor 9
Plot 245



Floor 10
Plot 249



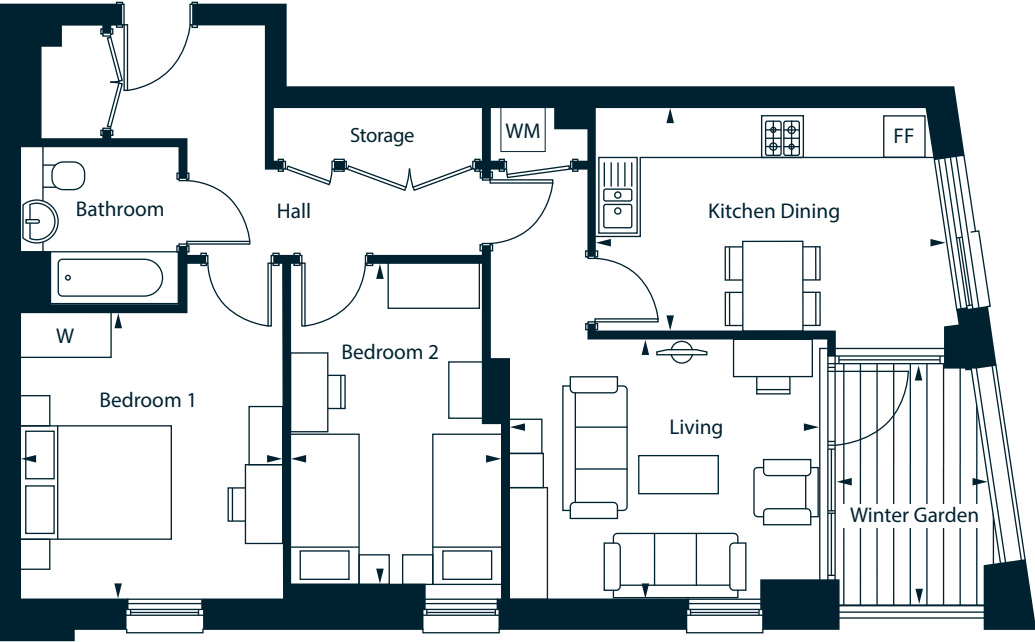
Room	Metric	Imperial
Living/ Kitchen / Dining	6.42m x 4.40m	21'1" x 14'5"
Bedroom 1	2.75m x 5.54m	9'0 ¹ / ₂ " x 18'2"
Bedroom 2	3.13m x 4.06m	10'3" x 13'4"
Total internal area	79 sq m	852 sq ft
Balcony	3.93m x 1.84m	12'11" x 6'0 ¹ / ₂ "

FF | Fridge Freezer WM | Washing Machine W | Wardrobe — | Juliette Balcony
Please be aware the storage cupboard may include heating and electrical controls, which may reduce the storage available. Please ask our Sales Negotiators for more information.

The floor plans provided are intended to only give a general indication of the proposed floor layout, are not drawn to scale and are not intended to form part of any offer, contract, warranty or representation. Measurements are given to the widest point, are approximate and are given as a guide only. They must not be relied upon as a statement or representation of fact. Do not use these measurements for carpet sizes, appliance spaces or items of furniture. Kitchen, bathroom and utility layouts may differ to build, and specific plot sizes and layouts may vary within the same unit type. Window sizes may vary. Please be aware the storage cupboard may include heating and electrical controls, which may reduce the storage available. Please ask sales associate for more information. For further clarification regarding specific individual plots, please ask our Sales Advisors. North pointer applies to plot locator map.

Two bedroom apartments
Apartment type E
Plots 240

Floor 8
Plot 240



Room	Metric	Imperial
Living	4.12m x 3.45m	13'6" x 11'3 ¹ / ₂ "
Kitchen / Dining	4.63m x 2.96m	15'2" x 9'8 ¹ / ₂ "
Bedroom 1	3.48m x 3.80m	11'5" x 12'5 ¹ / ₂ "
Bedroom 2	2.78m x 4.24m	9'1 ¹ / ₂ " x 13'11"
Total internal area	78 sq m	836 sq ft
Balcony	1.97m x 3.99m	6'5 ¹ / ₂ " x 13'1"

FF | Fridge Freezer WM | Washing Machine W | Wardrobe — | Juliette Balcony
Please be aware the storage cupboard may include heating and electrical controls, which may reduce the storage available. Please ask our Sales Negotiators for more information.

The floor plans provided are intended to only give a general indication of the proposed floor layout, are not drawn to scale and are not intended to form part of any offer, contract, warranty or representation. Measurements are given to the widest point, are approximate and are given as a guide only. They must not be relied upon as a statement or representation of fact. Do not use these measurements for carpet sizes, appliance spaces or items of furniture. Kitchen, bathroom and utility layouts may differ to build, and specific plot sizes and layouts may vary within the same unit type. Window sizes may vary. Please be aware the storage cupboard may include heating and electrical controls, which may reduce the storage available. Please ask sales associate for more information. For further clarification regarding specific individual plots, please ask our Sales Advisors. North pointer applies to plot locator map.

Granger House



Plot locator



First Floor



Second Floor



Third Floor



Fourth Floor



Fifth Floor



Key

- 1 bedroom homes
- 2 bedroom homes
- 3 bedroom homes
- Podium
- Roof

* Roof area is not accessible to residents

The floor plans provided are intended to only give a general indication of the proposed floor layout, are not drawn to scale and are not intended to form part of any offer, contract, warranty or representation. Measurements are given to the widest point, are approximate and are given as a guide only. They must not be relied upon as a statement or representation of fact. Do not use these measurements for carpet sizes, appliance spaces or items of furniture. Kitchen, bathroom and utility layouts may differ to build, and specific plot sizes and layouts may vary within the same unit type. For further clarification regarding specific individual plots, please ask our Sales Associates.

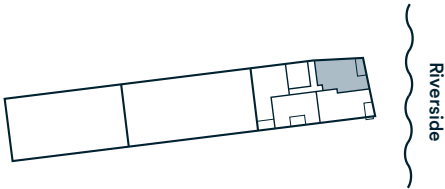
The development layout does not show details of gradients of land, boundary treatments, local authority street lighting or landscaping. It is our intention to build in accordance with this layout. However, there may be occasions when the house designs, boundaries, landscaping and positions of roads and footpaths change as the development proceeds. Please speak to a Sales Associate for more details.

Two bedroom apartments

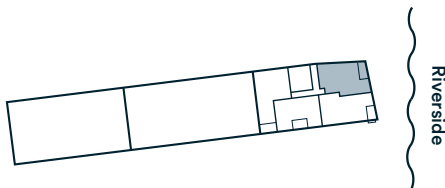
Apartment type A
Plots 360, 364*, 376



Floor 1
Plot 360

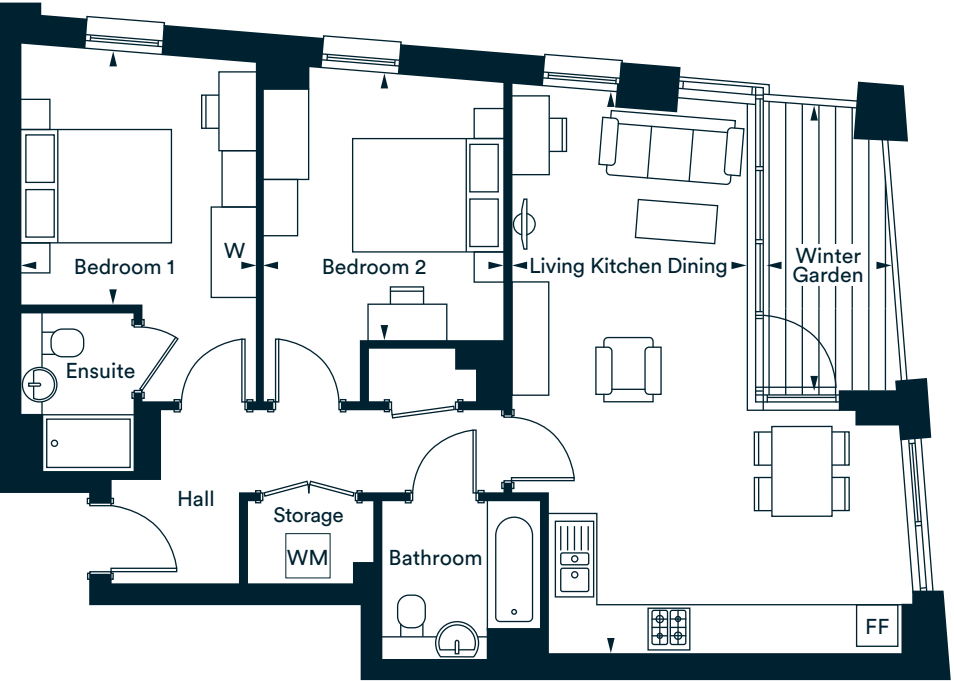
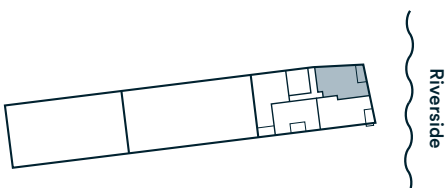


Floor 2
Plot 364*



*Denotes total internal area

Floor 5
Plot 376



Room	Metric	Imperial
Living / Kitchen / Dining	3.12m x 7.42m	10'2 1/2" x 24'4"
Bedroom 1	3.12m x 3.37m	10'3" x 11'1"
Bedroom 2	3.18m x 3.55m	10'5" x 11'7 1/2"
Total internal area	75 sq m	812 sq ft
Total internal area*	75 sq m	809 sq ft
Winter Garden	1.66m x 3.78m	5'5 1/2" x 12'5"

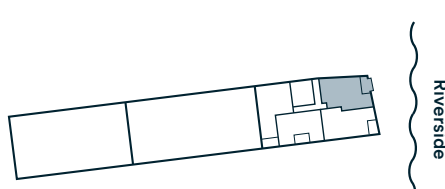
FF | Fridge Freezer WM | Washing Machine W | Wardrobe — | Juliette Balcony
Please be aware the storage cupboard may include heating and electrical controls, which may reduce the storage available. Please ask our Sales Negotiators for more information.

The floor plans provided are intended to only give a general indication of the proposed floor layout, are not drawn to scale and are not intended to form part of any offer, contract, warranty or representation. Measurements are given to the widest point, are approximate and are given as a guide only. They must not be relied upon as a statement or representation of fact. Do not use these measurements for carpet sizes, appliance spaces or items of furniture. Kitchen, bathroom and utility layouts may differ to build, and specific plot sizes and layouts may vary within the same unit type. Window sizes may vary. Please be aware the storage cupboard may include heating and electrical controls, which may reduce the storage available. Please ask sales associate for more information. For further clarification regarding specific individual plots, please ask our Sales Advisors. North pointer applies to plot locator map.

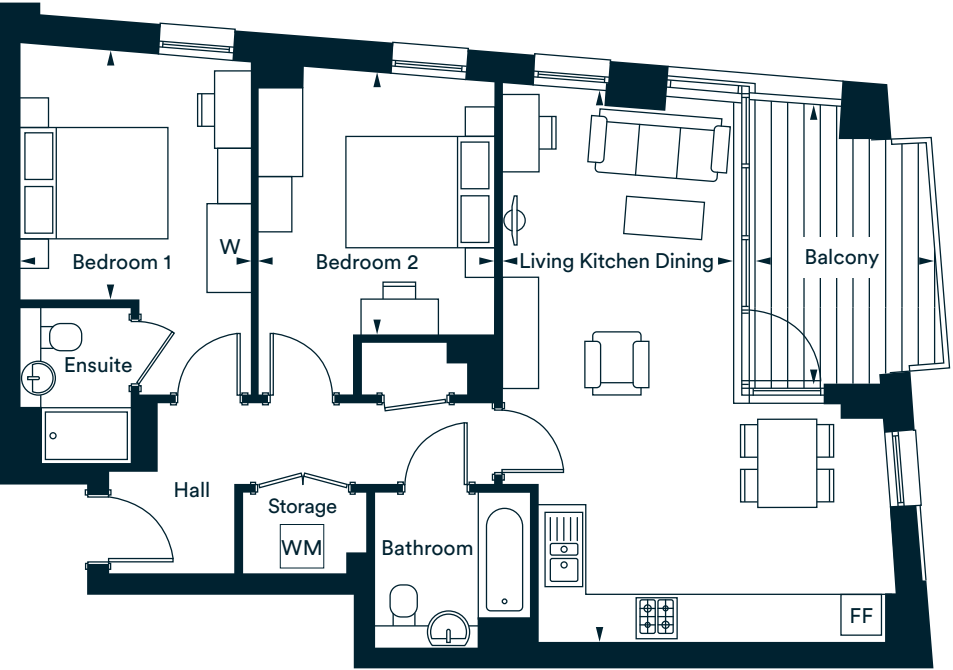
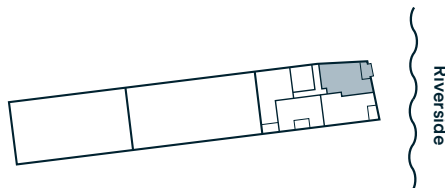
Apartment type A1
Plots 368, 372



Floor 3
Plot 368



Floor 4
Plot 372

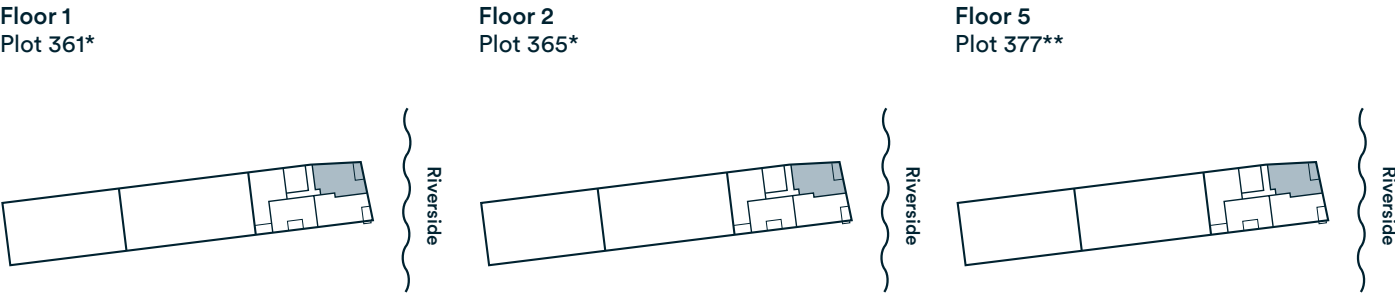


Room	Metric	Imperial
Living / Kitchen / Dining	3.12m x 7.42m	10'2 1/2" x 24'4"
Bedroom 1	3.12m x 3.37m	10'3" x 11'1"
Bedroom 2	3.18m x 3.55m	10'5" x 11'7 1/2"
Total internal area	75 sq m	812 sq ft
Balcony	2.44m x 3.79m	8'0" x 12'5"

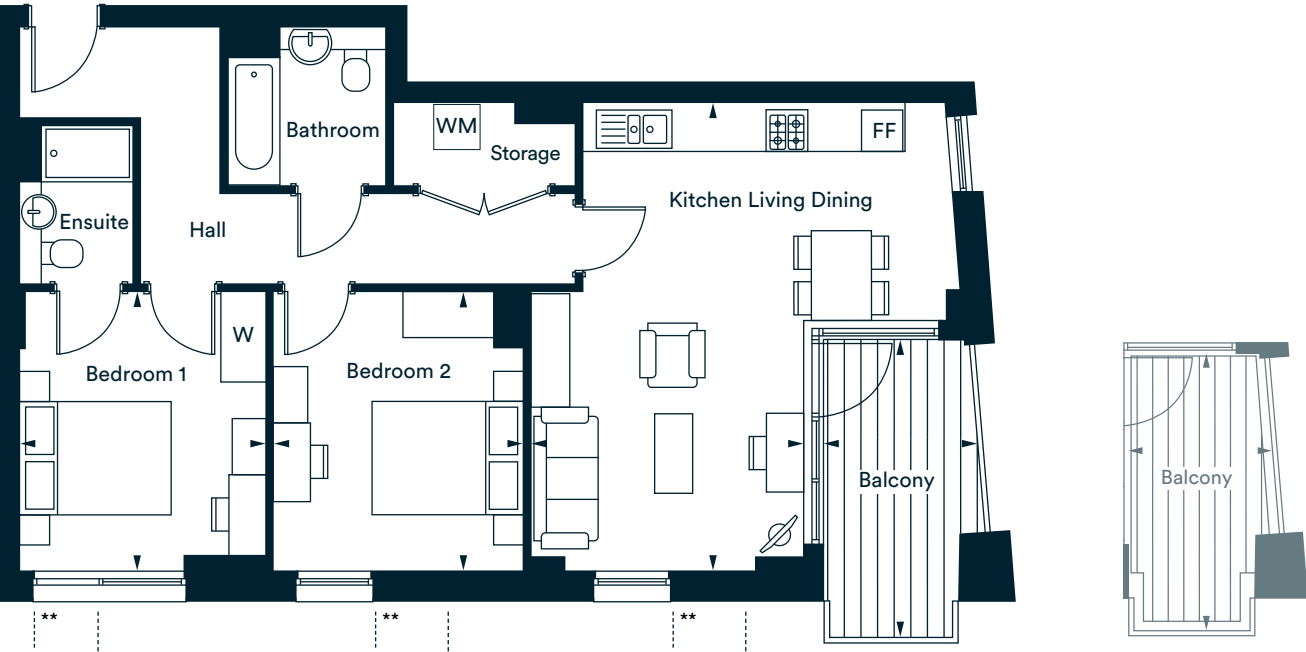
FF | Fridge Freezer WM | Washing Machine W | Wardrobe — | Juliette Balcony
Please be aware the storage cupboard may include heating and electrical controls, which may reduce the storage available. Please ask our Sales Negotiators for more information.

The floor plans provided are intended to only give a general indication of the proposed floor layout, are not drawn to scale and are not intended to form part of any offer, contract, warranty or representation. Measurements are given to the widest point, are approximate and are given as a guide only. They must not be relied upon as a statement or representation of fact. Do not use these measurements for carpet sizes, appliance spaces or items of furniture. Kitchen, bathroom and utility layouts may differ to build, and specific plot sizes and layouts may vary within the same unit type. Window sizes may vary. Please be aware the storage cupboard may include heating and electrical controls, which may reduce the storage available. Please ask sales associate for more information. For further clarification regarding specific individual plots, please ask our Sales Advisors. North pointer applies to plot locator map.

Apartment type B
Plots 361*, 365*, 377**



*Denotes total internal area



** Window positions
for plot 377

** Balcony applicable
to plot 377 only

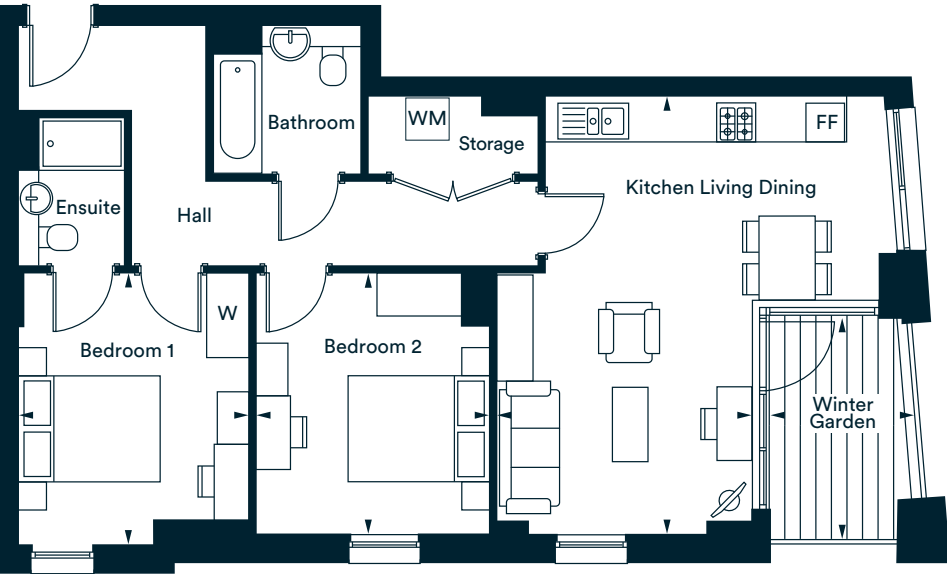
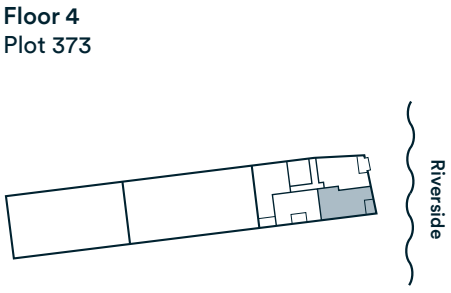
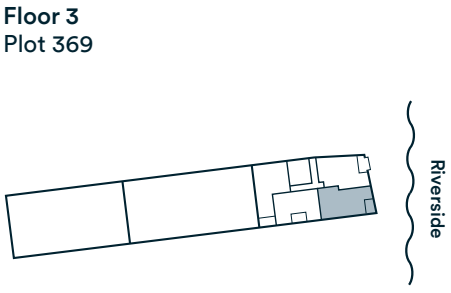
Room	Metric	Imperial
Living / Kitchen / Dining	3.59m x 6.20m	11'9 1/2" x 20'4"
Bedroom 1	3.26m x 3.70m	10'8 1/2" x 12'1 1/2"
Bedroom 2	3.30m x 3.70m	10'10" x 12'1 1/2"
Total internal area *	75 sq m	807 sq ft
Total internal area **	75 sq m	810 sq ft
Balcony *	2.02m x 3.92m	6'7 1/2" x 12'10 1/2"
Balcony **	4.04m x 7.84m	13'3" x 25'8 1/2"

FF | Fridge Freezer WM | Washing Machine W | Wardrobe — | Juliette Balcony

Please be aware the storage cupboard may include heating and electrical controls, which may reduce the storage available. Please ask our Sales Negotiators for more information.

The floor plans provided are intended to only give a general indication of the proposed floor layout, are not drawn to scale and are not intended to form part of any offer, contract, warranty or representation. Measurements are given to the widest point, are approximate and are given as a guide only. They must not be relied upon as a statement or representation of fact. Do not use these measurements for carpet sizes, appliance spaces or items of furniture. Kitchen, bathroom and utility layouts may differ to build, and specific plot sizes and layouts may vary within the same unit type. Window sizes may vary. Please be aware the storage cupboard may include heating and electrical controls, which may reduce the storage available. Please ask sales associate for more information. For further clarification regarding specific individual plots, please ask our Sales Advisors. North pointer applies to plot locator map.

Apartment type B1
Plots 369, 373



Room	Metric	Imperial
Living / Kitchen / Dining	3.62m x 6.20m	11'10 1/2" x 20'4"
Bedroom 1	3.26m x 3.85m	10'8 1/2" x 12'7 1/2"
Bedroom 2	3.30m x 3.70m	10'12" x 11'2"
Total internal area	75 sq m	810 sq ft
Winter Garden	2.05m x 3.12m	6'8 1/2" x 10'3"

FF | Fridge Freezer WM | Washing Machine W | Wardrobe — | Juliette Balcony

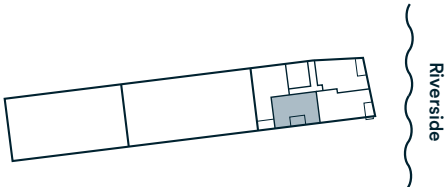
Please be aware the storage cupboard may include heating and electrical controls, which may reduce the storage available. Please ask our Sales Negotiators for more information.

The floor plans provided are intended to only give a general indication of the proposed floor layout, are not drawn to scale and are not intended to form part of any offer, contract, warranty or representation. Measurements are given to the widest point, are approximate and are given as a guide only. They must not be relied upon as a statement or representation of fact. Do not use these measurements for carpet sizes, appliance spaces or items of furniture. Kitchen, bathroom and utility layouts may differ to build, and specific plot sizes and layouts may vary within the same unit type. Window sizes may vary. Please be aware the storage cupboard may include heating and electrical controls, which may reduce the storage available. Please ask sales associate for more information. For further clarification regarding specific individual plots, please ask our Sales Advisors. North pointer applies to plot locator map.

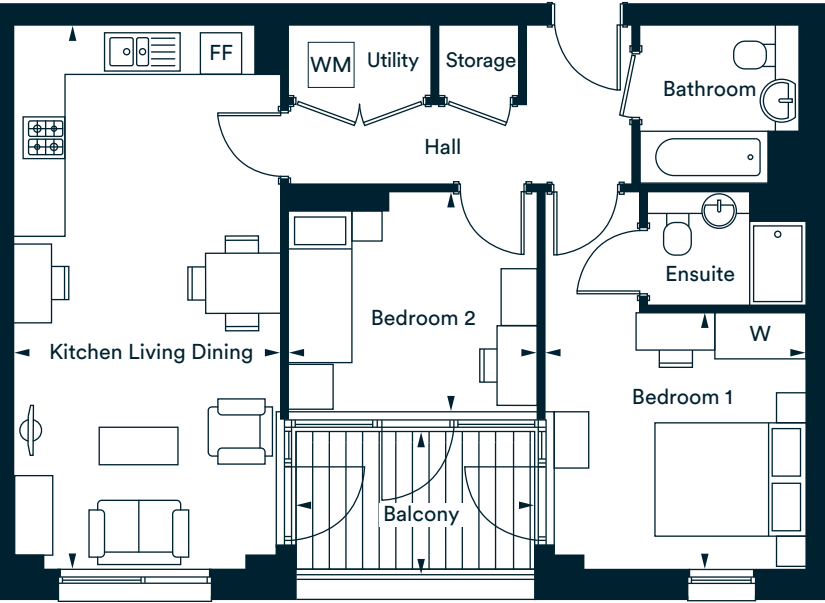
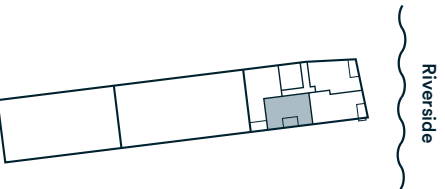
Apartment type C
Plots 362, 366



Floor 1
Plot 362



Floor 2
Plot 366



Room	Metric	Imperial
Living / Kitchen / Dining	3.52m x 7.20m	11'7" x 23'7 ¹ / ₂ "
Bedroom 1	3.48m x 3.40m	11'5" x 11'2"
Bedroom 2	3.27m x 2.88m	10'8 ¹ / ₂ " x 9'5"
Total internal area	68 sq m	727 sq ft
Balcony	3.16m x 1.89m	10'4 ¹ / ₂ " x 6'2 ¹ / ₂ "

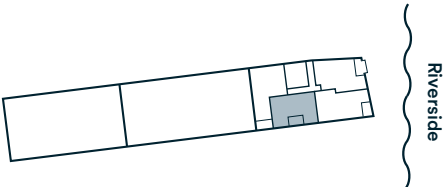
FF | Fridge Freezer WM | Washing Machine W | Wardrobe — | Juliette Balcony
Please be aware the storage cupboard may include heating and electrical controls, which may reduce the storage available. Please ask our Sales Negotiators for more information.

The floor plans provided are intended to only give a general indication of the proposed floor layout, are not drawn to scale and are not intended to form part of any offer, contract, warranty or representation. Measurements are given to the widest point, are approximate and are given as a guide only. They must not be relied upon as a statement or representation of fact. Do not use these measurements for carpet sizes, appliance spaces or items of furniture. Kitchen, bathroom and utility layouts may differ to build, and specific plot sizes and layouts may vary within the same unit type. Window sizes may vary. Please be aware the storage cupboard may include heating and electrical controls, which may reduce the storage available. Please ask sales associate for more information. For further clarification regarding specific individual plots, please ask our Sales Advisors. North pointer applies to plot locator map.

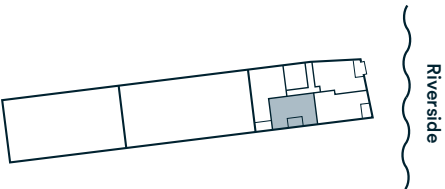
Apartment type C1
Plots 370, 374, 378



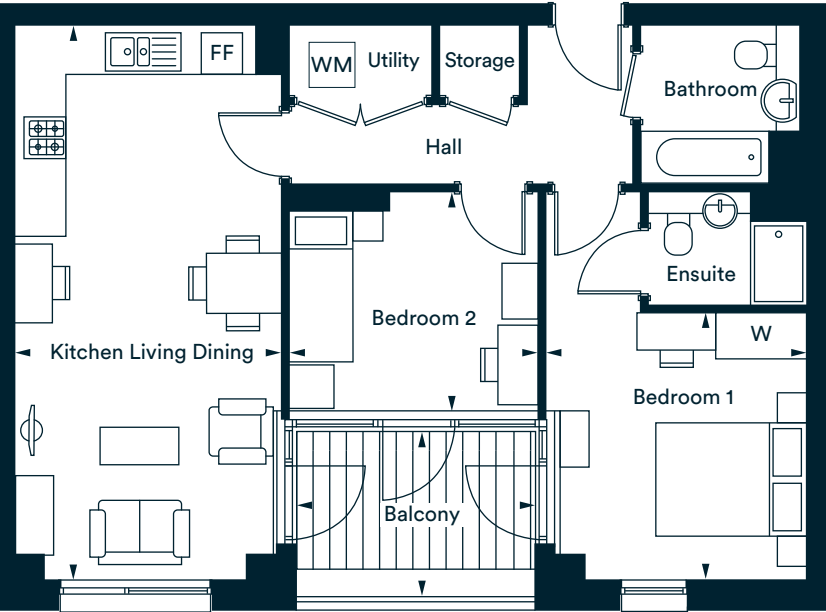
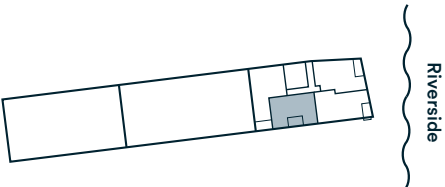
Floor 3
Plot 370



Floor 4
Plot 374



Floor 5
Plot 378



Room	Metric	Imperial
Living / Kitchen / Dining	3.53m x 7.35m	11'7" x 24'1 ¹ / ₂ "
Bedroom 1	3.48m x 3.55m	11'5" x 11'7 ¹ / ₂ "
Bedroom 2	3.27m x 2.91m	10'8 ¹ / ₂ " x 9'6 ¹ / ₂ "
Total internal area	68 sq m	737 sq ft
Balcony	3.16m x 2.19m	10'4 ¹ / ₂ " x 7'2"

FF | Fridge Freezer WM | Washing Machine W | Wardrobe — | Juliette Balcony
Please be aware the storage cupboard may include heating and electrical controls, which may reduce the storage available. Please ask our Sales Negotiators for more information.

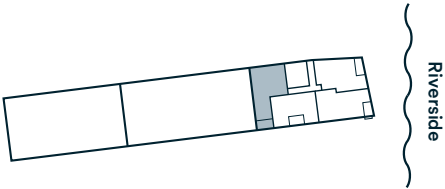
The floor plans provided are intended to only give a general indication of the proposed floor layout, are not drawn to scale and are not intended to form part of any offer, contract, warranty or representation. Measurements are given to the widest point, are approximate and are given as a guide only. They must not be relied upon as a statement or representation of fact. Do not use these measurements for carpet sizes, appliance spaces or items of furniture. Kitchen, bathroom and utility layouts may differ to build, and specific plot sizes and layouts may vary within the same unit type. Window sizes may vary. Please be aware the storage cupboard may include heating and electrical controls, which may reduce the storage available. Please ask sales associate for more information. For further clarification regarding specific individual plots, please ask our Sales Advisors. North pointer applies to plot locator map.

Apartment type D

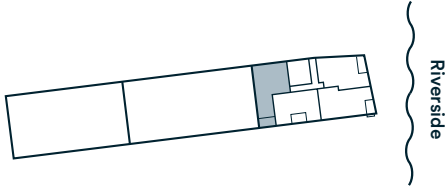
Plots 363, 367



Floor 1
Plot 363



Floor 2
Plot 367



Room	Metric	Imperial
Living / Kitchen / Dining	3.50m x 7.40m	11'6" x 24'3"
Bedroom 1	3.93m x 3.43m	12'10 ¹ / ₂ " x 11'3"
Bedroom 2	3.53m x 3.49m	11'7" x 11'5 ¹ / ₂ "
Total internal area	74 sq m	799 sq ft
Balcony	3.42m x 1.89m	11'2 ¹ / ₂ " x 6'2 ¹ / ₂ "

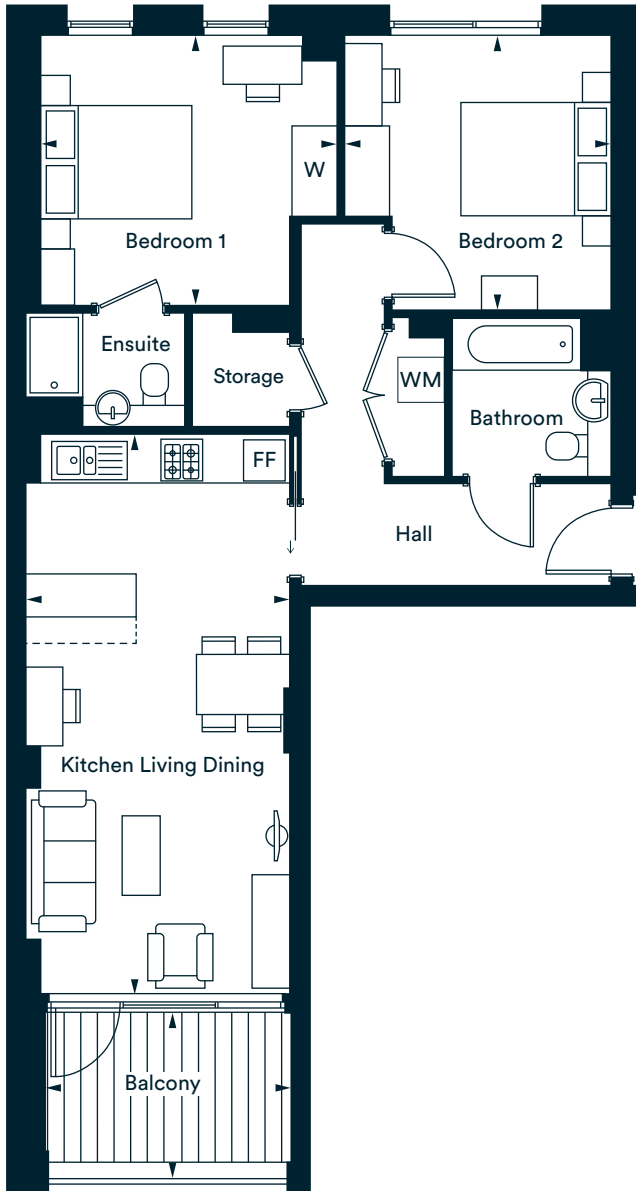
FF | Fridge Freezer WM | Washing Machine W | Wardrobe — | Juliette Balcony

Please be aware the storage cupboard may include heating and electrical controls, which may reduce the storage available. Please ask our Sales Negotiators for more information.

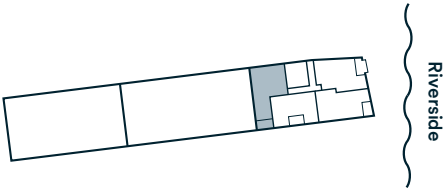
The floor plans provided are intended to only give a general indication of the proposed floor layout, are not drawn to scale and are not intended to form part of any offer, contract, warranty or representation. Measurements are given to the widest point, are approximate and are given as a guide only. They must not be relied upon as a statement or representation of fact. Do not use these measurements for carpet sizes, appliance spaces or items of furniture. Kitchen, bathroom and utility layouts may differ to build, and specific plot sizes and layouts may vary within the same unit type. Window sizes may vary. Please be aware the storage cupboard may include heating and electrical controls, which may reduce the storage available. Please ask sales associate for more information. For further clarification regarding specific individual plots, please ask our Sales Advisors. North pointer applies to plot locator map.

Apartment type D1

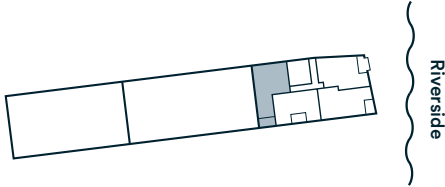
Plots 371, 375, 379



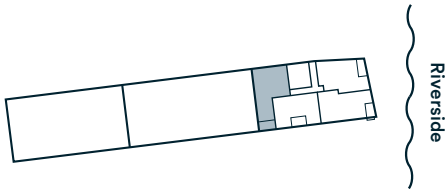
Floor 3
Plot 371



Floor 4
Plot 375



Floor 5
Plot 379



Room	Metric	Imperial
Living / Kitchen / Dining	3.50m x 7.40m	11'6" x 24'3"
Bedroom 1	3.93m x 3.58m	12'10 ¹ / ₂ " x 11'9"
Bedroom 2	3.53m x 3.64m	11'7" x 11'11"
Total internal area	75 sq m	811 sq ft
Balcony	3.26m x 2.19m	10'8 ¹ / ₂ " x 7'2"

FF | Fridge Freezer WM | Washing Machine W | Wardrobe — | Juliette Balcony

Please be aware the storage cupboard may include heating and electrical controls, which may reduce the storage available. Please ask our Sales Negotiators for more information.

The floor plans provided are intended to only give a general indication of the proposed floor layout, are not drawn to scale and are not intended to form part of any offer, contract, warranty or representation. Measurements are given to the widest point, are approximate and are given as a guide only. They must not be relied upon as a statement or representation of fact. Do not use these measurements for carpet sizes, appliance spaces or items of furniture. Kitchen, bathroom and utility layouts may differ to build, and specific plot sizes and layouts may vary within the same unit type. Window sizes may vary. Please be aware the storage cupboard may include heating and electrical controls, which may reduce the storage available. Please ask sales associate for more information. For further clarification regarding specific individual plots, please ask our Sales Advisors. North pointer applies to plot locator map.

Buying a Shared Ownership home with L&Q

With Shared Ownership you start by buying a share in your home and then progress to full ownership by buying more shares. Your deposit will be 5% to 10% of the share you are buying. You pay a mortgage on the share you own and a rent to L&Q on the share you don't own.

Am I Eligible?

To buy a home under the Shared Ownership scheme you must meet these basic requirements:

- have a combined annual household income under £90,000 in London
- not own a property, or part of a property, at the time of completing on your purchase
- be 18 years or older and be able to obtain a mortgage

Complete our Shared Ownership Application form to confirm your eligibility.

Are some applicants prioritised?

Some developments may initially be reserved for those who live or work locally, but in most cases the development is open to everyone so please register if you are interested. You can find out more about the development eligibility criteria on our website or by speaking to the Sales Team.

Is Shared Ownership really affordable?

The best way to find out if Shared Ownership is affordable for you is to speak to an independent mortgage advisor about your finances. They will help you determine what is affordable and help you make the right decision. You will need a deposit and will also need to cover the costs of buying a home. These costs include things like the reservation fee, mortgage valuation fee, removal costs and utility connection charges.

Can I buy more shares in my home?

Yes, this process is known as staircasing. You can also sell the share you own at any time, either via the L&Q Resales team or on the open market.

If you have any questions about the application form please contact the Homebuy Application Team at applications@lqgroup.org.uk or call **0300 456 9997** opt 1, Monday to Friday 9am-5pm
You can learn all about Shared Ownership at lqhomes.com/shared-ownership

Getting started with L&Q Shared Ownership



Step 1: Confirm your eligibility

Complete the online L&Q Shared Ownership Application form at lqhomes.com/apply. If you're purchasing a home with a friend or partner, remember to complete the Joint Application section of the form.



Step 2: Reserve your home

Browse our website and find a home that's right for you. Book a viewing and visit the show home, once you've chosen your home reserve it with a payment of £500. Homes will be allocated based on priority.



Step 3: We make you an offer

Once you have paid your reservation fee, we will verify your identity. If the result of this check is satisfactory, we'll contact you to make an offer of a home.

Buying a Shared Ownership home After we have made you an offer



Step 1: Meet a mortgage advisor

When you accept the offer, it will be subject to a financial assessment with an independent mortgage advisor (IMA). They will assess what share you can afford to purchase and arrange your mortgage application for you.



Step 2: You appoint a solicitor

Everyone who buys a home needs to appoint a conveyancing solicitor to work on their behalf. We can provide details of solicitors who specialise in shared ownership.



Step 3: We exchange contracts

The Memorandum of Sale (MOS) will give a date by which to exchange contracts. This makes your intention to buy a home through L&Q a legally binding agreement.



Step 4: Completion day arrives!

Your mortgage lender will give your solicitor the money to buy your home and complete the sale. Congratulations on purchasing your new home!



Step 5: Time to collect your keys

We will make arrangements to meet you at your home and hand over your keys. We will also walk you through your new home and talk you through your Home User Guide.

We're here and ready to help

When you're ready to move in, L&Q will give you a personal introduction to your new L&Q home.

The L&Q new homes warranty
We will demonstrate how to operate your appliances and heating and talk you through any special features, all of which will be detailed in your Home User Guide.

We are confident that you will be delighted with your new L&Q home, but for added peace of mind, all of our homes also come with an L&Q new homes warranty.

This lasts for two years from the date of legal completion. For the 2-year period, we guarantee items supplied as part of your new home, covering repairs needed due to faulty workmanship or materials. The NHBC Buildmark cover is valid for 10 years from the date the building was finished.

Your Sales Associate can provide you with more details on the L&Q warranty and NHBC Buildmark cover. You can also access the full terms and conditions on our website: lqgroup.org.uk



A selection of other L&Q developments



L&Q at Brunel Street Works –
Canning Town
lqhomes.com/brunel-street-works



L&Q at The Silk District –
Whitechapel
lqhomes.com/thesilkdistrict



The Chain – Walthamstow
lqhomes.com/thechain

Disclaimer
All information in this document is correct at the time of publication going to print August 2022. The contents of this brochure should not be considered material information for the purposes of purchasing a home. No image or photograph (whether computer generated or otherwise) is taken as a statement or representation of fact, and no image or photograph (whether computer generated or otherwise) forms part of any offer, contract, warranty or representation. Registered office: L&Q, 29-35 West Ham Lane, Stratford, London E15 4PH. Homes & Communities Agency L4517. Registered Society 30441R Exempt charity. Your home is at risk if you fail to keep up repayments on a mortgage, rent or other loan secured on it. Please make sure you can afford the repayments before you take out a mortgage.

New Union Wharf Marketing Suite
River Barge Close
London E14 3JX

lqhomes.com/newunionwharf
0208 189 7471
NUW@lqgroup.org.uk

L&Q