



# PORTRA RISE

Kenna House

---

Floor Plans and Specification  
London Living Rent

**L&Q**





Image is representative of a typical L&Q show home

## A bustling suburb

## *and well-connected location*

Located on the site of an old Kodak factory, L&Q presents a photogenic development with 138 new apartments available through London Living Rent. With an on-site supermarket and a school and health centre planned for the future – all just minutes away from an underground station that will take you straight into central London.

For those looking to live in a tight-knit community, green spaces in abundance and easy routes into central London, these contemporary yet history-rich apartments are in the perfect spot.

The building's photographic heritage is reflected in design touches like the mixture of portrait and landscape windows. It's a picture-perfect canvas to make your own.

A shared green podium with mature trees, a play area and wildflower garden connects the homes, making it an ideal space to relax, play and get to know your neighbours.

With three overground and underground stations on your doorstep, heading to the city or further afield is simple. But nothing beats a short walk to your favourite restaurant or cafe, before a long stroll through your favourite park.

Portra Rise has a number of London Living Rent homes available which is the perfect stepping stone to buying a home through Shared Ownership - with the discounted rent allowing you to save extra money each month to put towards a deposit\*.

\*Shared Ownership eligibility criteria will apply on your Shared Ownership home, L&Q cannot guarantee you will meet future affordability requirements should you wish to buy a Shared Ownership home.



# London Living Rent from L&Q

London Living Rent (LLR) is designed for people who are currently renting and want to get onto the property ladder but can't afford to do so yet – either through Shared Ownership or on the open market.

London Living Rent lets you:

- Rent a home at a lower price compared to renting privately
- Save faster towards a deposit to buy your own home
- Rent the home you want to buy
- Buy a share of your home through Shared Ownership with L&Q within 10 years\*

Rent a brand-new and stylish home and you can benefit from:



Generously sized homes



Amenities and shops within walking distance



Excellent transport links close by

\*Shared Ownership eligibility criteria will apply on your Shared Ownership home, L&Q cannot guarantee you will meet future affordability requirements should you wish to buy a Shared Ownership home.

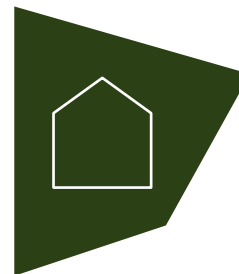


Image is representative of a typical L&Q show home

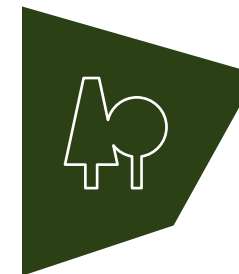




# So much to do *and everywhere to explore*



Homes with plenty  
of space to grow



An abundance of surrounding  
green spaces to enjoy



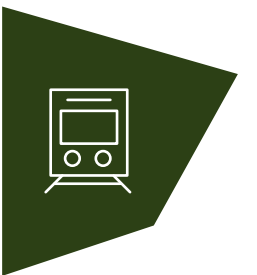
A stream of independent  
shops and restaurants nearby



Several sports clubs  
and amenities close  
to home



A new health  
centre and school  
on site



Close to Harrow & Wealdstone  
station, providing 15 minute  
journeys to Euston\*



Local supermarkets  
within easy reach



Easy routes straight  
onto the M1 and A40

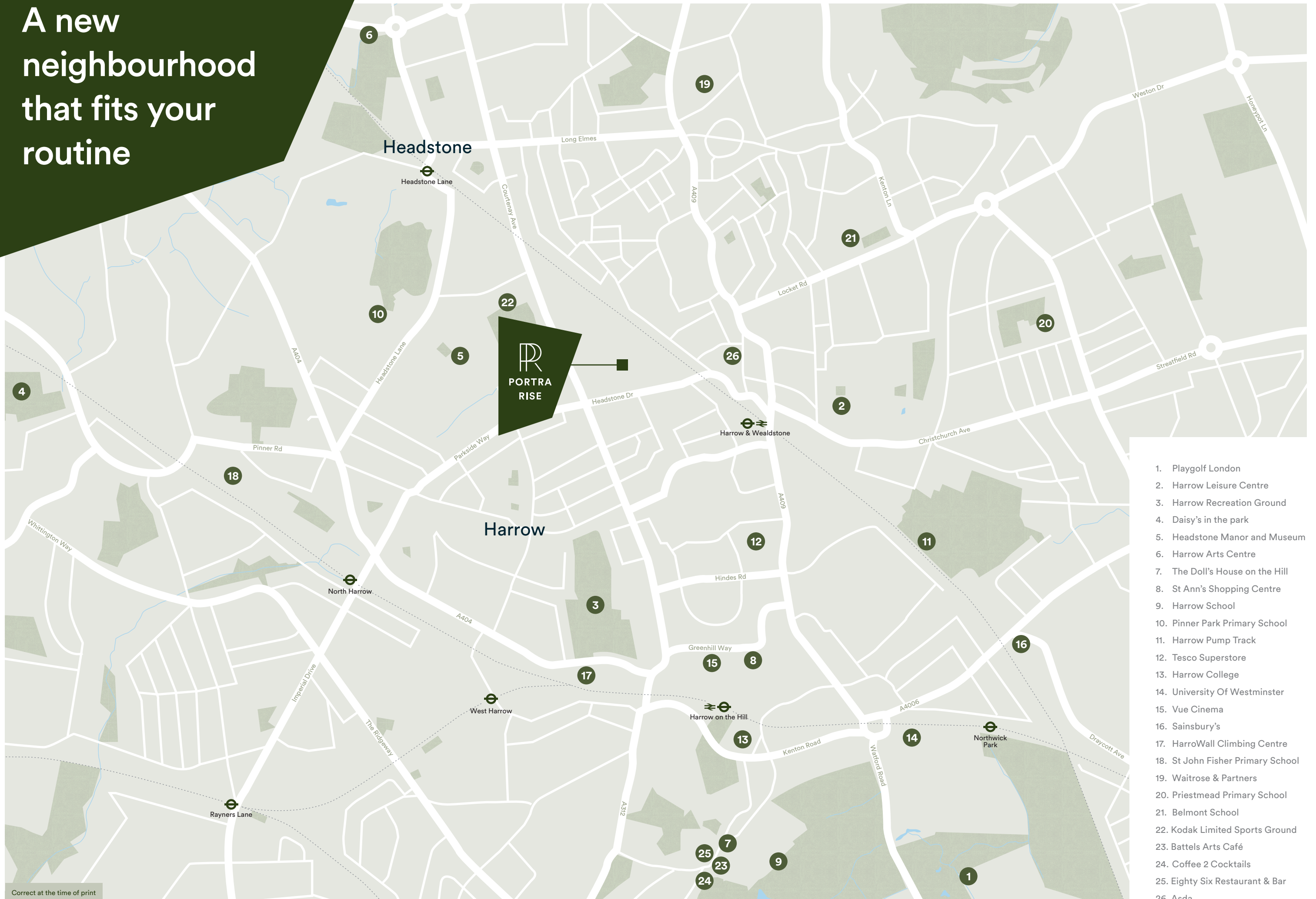


Wembley Stadium is just  
an 18 minute drive away\*

\*Travel times are approximate  
Distances taken from [google.co.uk/maps](https://www.google.co.uk/maps)



# A new neighbourhood that fits your routine



1. Playgolf London
2. Harrow Leisure Centre
3. Harrow Recreation Ground
4. Daisy's in the park
5. Headstone Manor and Museum
6. Harrow Arts Centre
7. The Doll's House on the Hill
8. St Ann's Shopping Centre
9. Harrow School
10. Pinner Park Primary School
11. Harrow Pump Track
12. Tesco Superstore
13. Harrow College
14. University Of Westminster
15. Vue Cinema
16. Sainsbury's
17. HarroWall Climbing Centre
18. St John Fisher Primary School
19. Waitrose & Partners
20. Priestmead Primary School
21. Belmont School
22. Kodak Limited Sports Ground
23. Battels Arts Café
24. Coffee 2 Cocktails
25. Eighty Six Restaurant & Bar
26. Asda



Well  
connected



**By rail from  
Harrow & Wealdstone**

Wembley	7 mins
Euston	11 mins
Watford	22 mins
King's Cross	26 mins
Heathrow	1 hr 10 mins



**On foot from  
Portra Rise**

Headstone Manor & Museum	7 mins
Asda	8 mins
Harrow & Wealdstone Station	9 mins
Harrow Leisure Centre	15 mins
Shobha's Rasoi	19 mins



**By road from  
Portra Rise**

Wembley Stadium	14 mins
M1	22 mins
Luton Airport	29 mins
Heathrow Airport	37 mins
Milton Keynes	51 mins



**By cycle from  
Portra Rise**

Harrow Arts Centre	8 mins
Pinner Memorial Park	12 mins
Playgolf London	12 mins
The Doll's House on the Hill	15 mins
Ruislip Lido	28 mins

Travel times are approximate  
Train times taken from [nationalrail.co.uk](http://nationalrail.co.uk)  
Distances taken from [google.co.uk/maps](http://google.co.uk/maps)





## Sports

From the state-of-the-art gym at Harrow Leisure Centre to the 9-hole golf course just a short drive away, the area isn't short of facilities to keep you active.

### Harrow Leisure Centre

3 mins by cycling  
15 mins by walking

### Harrow Skate Park

4 mins by cycling  
17 mins by walking



## Outdoors

Harrow's green spaces are unmatched. Kenton Recreation park is known for its sporting facilities, while Pinner Memorial Park is the perfect place to stroll and relax by the ponds.

### Kenton Recreation Ground

7 mins by cycling

### Pinner Memorial Park

13 mins by cycling



## Culture

Immerse yourself in 1,200 years of Harrow's history at Headstone Manor and Museums, or catch a play, concert or comedy night at Harrow Arts Centre.

### Headstone Manor and Museum

4 mins by cycling  
15 mins by walking

### Harrow Arts Centre

10 mins by cycling



## Eat & Drink

From Victorian bread ovens to Tanzanian spices, Harrow's eclectic food and drink scene has it all. Try The Doll's House on the Hill for treats on vintage china or Shobha's Rasoi for authentic pan-Indian cuisine.

### Shobha's Rasoi

4 mins by cycling  
15 mins by walking

### The Doll's House on the Hill

4 mins by cycling  
15 mins by walking



## Education

Take a tour around the famous Harrow School's Grade I listed buildings, where Lord Byron, Churchill and more recently Benedict Cumberbatch spent their youth. John Lyon school in the picturesque Harrow on the Hill is also a prestigious academic option.

### Harrow High School

5 mins by cycling  
13 mins by walking

### Harrow College

6 mins by cycling  
13 mins by walking

### St Anselms Catholic Primary School

7 mins by cycling  
17 mins by walking



## Shopping

Find a great selection of high street brands at the St George's Shopping Centre and St Anns shopping centres near by and for your everyday essentials there are a variety of supermarkets in close reach.

### St George's Shopping Centre

6 mins by cycling

### St Anns Shopping Centre

8 mins by cycling



A convenient commute and  
*so close to the action*



Harrow & Wealdstone Station



Wembley Stadium



Olympic Way Wembley Park



King's Cross Station

Harrow and Wealdstone underground and overground station is a mere three-minute cycle or nine-minute walk from your front apartment door. You're in Central London in less than half an hour too.

Harrow & Wealdstone is on the Bakerloo line, as well as the overground, taking you straight into Central London. Cross Country rail will also get you there in less than half an hour. You can also get to Wembley in seven minutes, Euston in 11 and King's Cross in just over 25.

The Metropolitan line goes from Harrow on the Hill, North Harrow or West Harrow and will take you into Marylebone in 15 minutes.

Finally, if you've travelling by car, Harrow's close proximity to the M1 means it's easy to get to and from anywhere.

Travel times are approximate  
Distances taken from [google.co.uk/maps](https://www.google.co.uk/maps)



# An urban village with a buzzing community

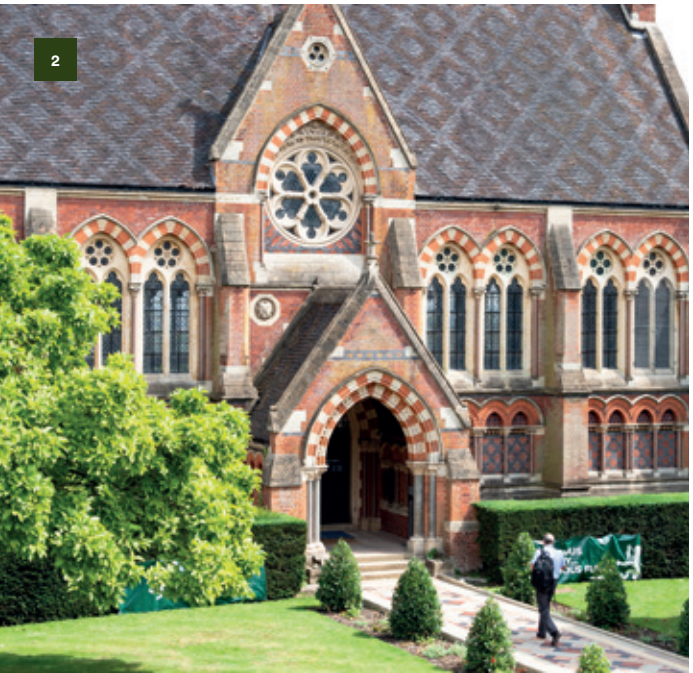
With excellent transport links to the city, all the amenities you could need and more green spaces than most London boroughs, Harrow is fast becoming one of the capital’s most popular places to live.

Harrow’s diverse and vibrant population means there’s always an abundance of local choice – from an eclectic mix of restaurants and bars to a whole host of events and festivals.

You won’t have to venture far to find what you need. Close by are two shopping centres, a leisure centre, tennis courts, a golf course, restaurants, cafés, bars, independent businesses and supermarkets of all shapes and sizes.

Although it feels exciting and urban, green spaces dominate this part of the city. From recreation grounds to parks to the oldest village ponds in the UK, you’re never short of spaces to get active, relax or feel at one with nature.

- 1. Coffee 2 Cocktails
- 2. Harrow School
- 3. Kodak Sports Ground
- 4. Battels Arts Café
- 5. The King’s Head Gantry
- 6. Headstone Manor & Museum











Images depict a typical L&Q show home



# Specification

All the homes located at Portra Rise have a fully inclusive specification throughout. Each apartment will be complete with private outdoor space.

## Kitchen



- Modern kitchen cabinets with a complementary worktop and matching upstand
- Full height matching splashback behind the hob
- Under cupboard lighting
- Stainless steel sink with matching chrome tap
- Fully integrated appliances including oven, induction hob, fridge/freezer, dishwasher and extractor

## Wall and Floor Finishes



- White emulsion painted walls and ceilings
- White satin architraves and skirting boards
- Limewashed oak flooring to hallway/kitchen/living/dining areas
- Ceramic large format floor and wall tiles to bathrooms
- Fitted carpet to bedrooms

## Bathroom



- Modern white sanitaryware including semi-countertop basin with chrome basin tap
- Back-to-wall WC with concealed cistern
- Chrome dual flush plate for water efficiency
- Full height mirror above sink
- Steel bath with bespoke bath panel
- Chrome towel radiator
- Steel bath with glass shower screen, chrome bath mixer tap and thermostatic shower valve with overhead shower attachment
- White shaver point

## Heating, Electrical and Lighting



- The radiators are powered by electricity, while hot water is supplied by energy-efficient air source heat pumps
- Low energy white LED to kitchen/living/dining and hallway areas
- Pendant lights in bedrooms
- Chrome sockets to the kitchen and White sockets to all remaining rooms
- Double sockets to include USB charging where applicable
- Mains operated ceiling mounted smoke/heat detector

## Ensuite



- Embrace glass shower screen and thermostatic shower valve with overhead shower attachment
- Back-to-wall WC with concealed cistern
- Chrome towel radiator
- White shaver point
- Full height mirror above sink
- Modern white sanitaryware including semi-countertop basin with chrome basin tap

## General



- White internal doors
- Washing machine located in utility cupboard
- Private balcony or terrace to all apartments
- Video door entry system to apartments
- Communal bicycle storage in all apartment blocks

The specification of the properties is correct at the date of print but may change as building works progress. Any images are indicative of the anticipated quality and style of the specification and may not represent the actual furnishings and fittings of the properties. Unless specifically incorporated in writing into the sales contract the specification is not intended to form part of any offer, contract, warranty or representation and should not be relied upon as a statement or representation of fact.



# Site Plan



For further clarification regarding specific individual plots, please ask our Lettings Associates. Any depiction of the layout does not show details of gradients of land, boundary treatments, local authority street lighting or landscaping. It is our intention to build in accordance with this layout including the locations of Market Sale, Shared Ownership, London Living Rent, Private Rent and Affordable Rent properties (known as tenures). However, there may be occasions when the tenure location, house designs, boundaries, landscaping and positions of roads and footpaths, play areas and other facilities or amenities may change as the development proceeds and as properties are marketed. The layout (including tenure locations) is subject to amendments due to changing planning permission for the development, and depictions of the layout should be used as guidance only. No site map including tenure locations (whether computer generated or otherwise) forms part of any offer, contract, warranty, or representation and are for illustrative and guidance purposes only, quality of this technology may vary. In relation to computer generated images, [maximum/minimum] dimensions have been used to generate this image and as a result dimensions may vary (and should not be relied on by you).



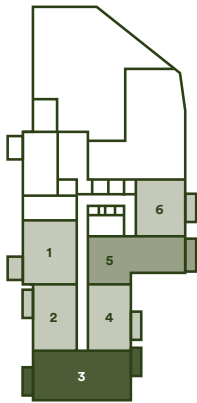


Image is a CGI and is for indicative purpose only

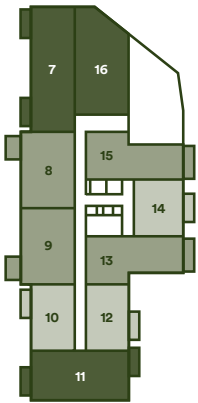
# Kenna House



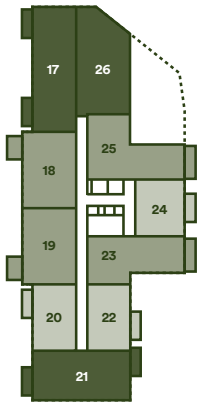
First Floor



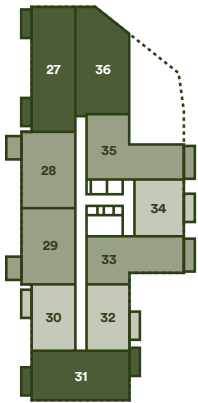
Second Floor



Third Floor



Fourth Floor



Fifth Floor



Sixth Floor



Seventh Floor



Eighth Floor



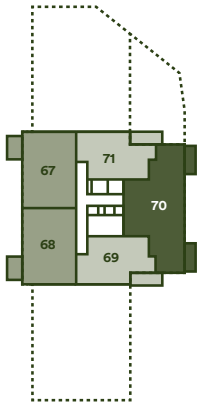
Ninth Floor



Tenth Floor



Eleventh Floor



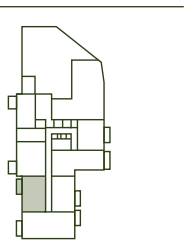
- Key**
- One bedroom apartments
  - Two bedroom apartments
  - Three bedroom apartments

The floor plans provided are intended to only give a general indication of the proposed floor layout, are not drawn to scale and are not intended to form part of any offer, contract, warranty or representation. Measurements are given to the widest point, are approximate and are given as a guide only. They must not be relied upon as a statement or representation of fact. Do not use these measurements for carpet sizes, appliance spaces or items of furniture. Kitchen, bathroom and utility layouts may differ to build, and specific plot sizes and layouts may vary within the same unit type. For further clarification regarding specific individual plots, please ask our Lettings Associates.

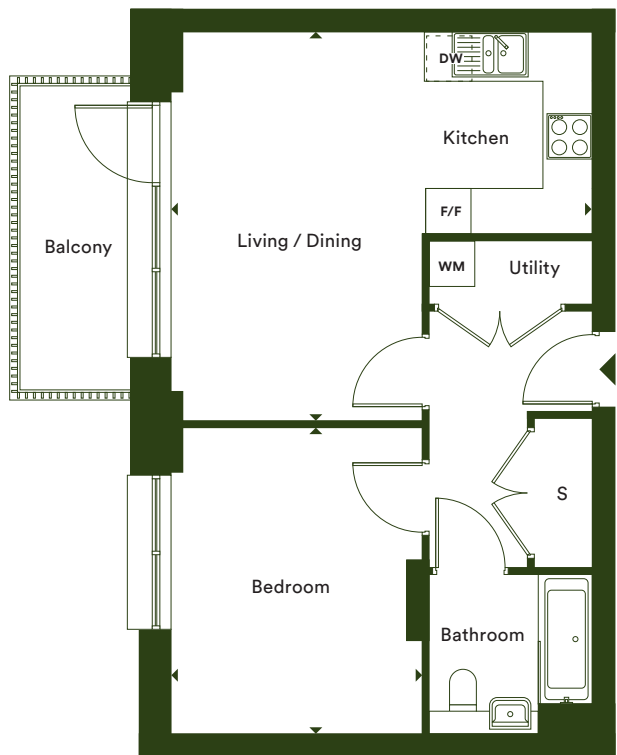


# One bedroom apartment

Type 03  
Apartments 2, 10, 20 & 30



Floors 1 to 4



### Accommodation

Living / Dining / Kitchen	5.19m x 5.62m	17' x 18' 5"
Bedroom	4.08m x 3.36m	13' 4" x 11'
<b>Total Internal Area</b>	<b>51.6 m<sup>2</sup></b>	<b>555.4 ft<sup>2</sup></b>
Balcony	1.50m x 4.08m	4' 11" x 13' 4"

### Floor Plot Apartment

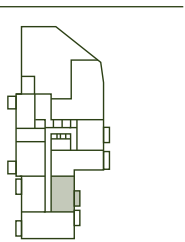
1	1.02	2
2	2.04	10
3	3.04	20
4	4.04	30

F/F – Fridge/Freezer | S – Storage | WM – Washing Machine | DW – Dishwasher

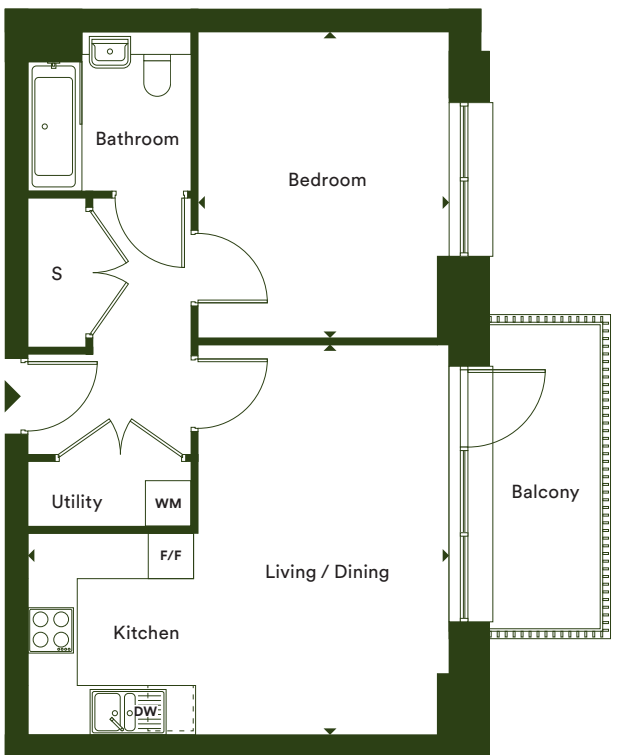
\*Denotes apartments that are opposite handed/mirror image to the plans drawn. Garden sizes vary between plots, check the site plan and garden sizes for clarification. The floor plans provided are intended to only give a general indication of the proposed floor layout, are not drawn to scale and are not intended to form part of any offer, contract, warranty or representation. Measurements are given to the widest point, are approximate and are given as a guide only. They must not be relied upon as a statement or representation of fact. Do not use these measurements for carpet sizes, appliance spaces or items of furniture. Kitchen, bathroom and utility layouts may differ to build, and specific plot sizes and layouts may vary within the same unit type. Window sizes may vary. Positions are indicative only and positions may vary. For further clarification regarding specific individual plots, please ask our Lettings Associates.

# One bedroom apartment

Type 03 A  
Apartments 4, 12, 22 & 32



Floors 1 to 4



### Accommodation

Living / Dining / Kitchen	5.19m x 5.62m	17' x 18' 5"
Bedroom	4.08m x 3.36m	13' 4" x 11'
<b>Total Internal Area</b>	<b>51.7 m<sup>2</sup></b>	<b>556.49 ft<sup>2</sup></b>
Balcony	1.50m x 4.08m	4' 11" x 13' 4"

### Floor Plot Apartment

1	1.04	4
2	2.06	12
3	3.06	22
4	4.06	32

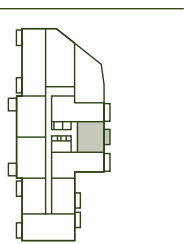
F/F – Fridge/Freezer | S – Storage | WM – Washing Machine | DW – Dishwasher

\*Denotes apartments that are opposite handed/mirror image to the plans drawn. Garden sizes vary between plots, check the site plan and garden sizes for clarification. The floor plans provided are intended to only give a general indication of the proposed floor layout, are not drawn to scale and are not intended to form part of any offer, contract, warranty or representation. Measurements are given to the widest point, are approximate and are given as a guide only. They must not be relied upon as a statement or representation of fact. Do not use these measurements for carpet sizes, appliance spaces or items of furniture. Kitchen, bathroom and utility layouts may differ to build, and specific plot sizes and layouts may vary within the same unit type. Window sizes may vary. Positions are indicative only and positions may vary. For further clarification regarding specific individual plots, please ask our Lettings Associates.

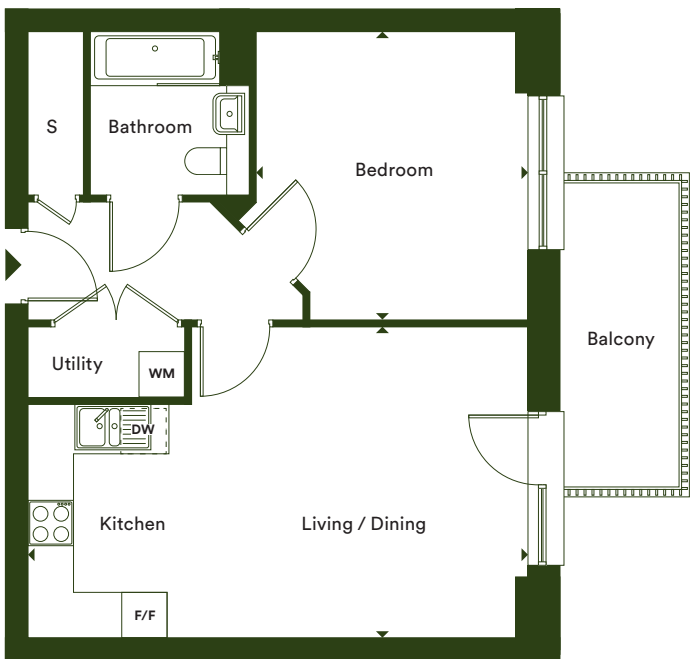


# One bedroom apartment

Type 09  
Apartments 14, 24, 34 & 40



Floors 2 to 5



## Accommodation

Living / Dining / Kitchen	4.14m x 6.65m	13' 7" x 20' 9"
Bedroom	3.83m x 3.63m	12' 6" x 11' 10"
<b>Total Internal Area</b>	<b>52.7 m²</b>	<b>567.26 ft²</b>
Balcony	1.50m x 4.08m	4' 11" x 13' 4"

## Floor Plot Apartment

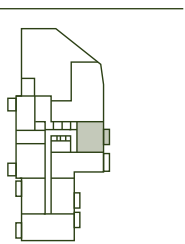
2	2.08	14
3	3.08	24
4	4.08	34
5	5.04	40

F/F – Fridge/Freezer | S – Storage | WM – Washing Machine | DW – Dishwasher

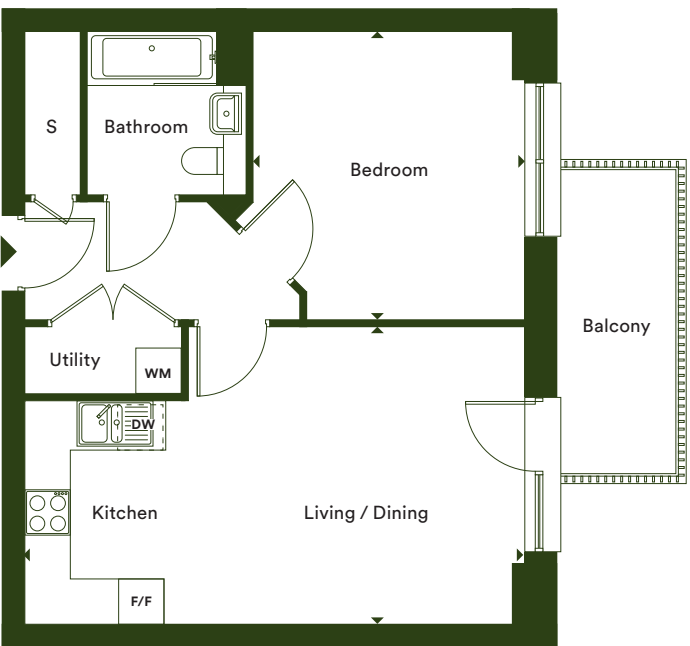
\*Denotes apartments that are opposite handed/mirror image to the plans drawn. Garden sizes vary between plots, check the site plan and garden sizes for clarification. The floor plans provided are intended to only give a general indication of the proposed floor layout, are not drawn to scale and are not intended to form part of any offer, contract, warranty or representation. Measurements are given to the widest point, are approximate and are given as a guide only. They must not be relied upon as a statement or representation of fact. Do not use these measurements for carpet sizes, appliance spaces or items of furniture. Kitchen, bathroom and utility layouts may differ to build, and specific plot sizes and layouts may vary within the same unit type. Window sizes may vary. Positions are indicative only and positions may vary. For further clarification regarding specific individual plots, please ask our Lettings Associates.

# One bedroom apartment

Type 09 A  
Apartment 6



Floor 1



## Accommodation

Living / Dining / Kitchen	3.97m x 6.65m	13' x 21' 9"
Bedroom	3.82m x 3.62m	12' 6" x 11' 10"
<b>Total Internal Area</b>	<b>51.5 m²</b>	<b>554.34 ft²</b>
Balcony	1.50m x 4.08m	4' 11" x 13' 4"

## Floor Plot Apartment

1	1.06	6
---	------	---

F/F – Fridge/Freezer | S – Storage | WM – Washing Machine | DW – Dishwasher

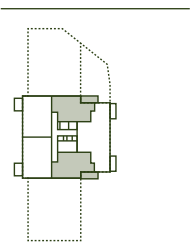
\*Denotes apartments that are opposite handed/mirror image to the plans drawn. Garden sizes vary between plots, check the site plan and garden sizes for clarification. The floor plans provided are intended to only give a general indication of the proposed floor layout, are not drawn to scale and are not intended to form part of any offer, contract, warranty or representation. Measurements are given to the widest point, are approximate and are given as a guide only. They must not be relied upon as a statement or representation of fact. Do not use these measurements for carpet sizes, appliance spaces or items of furniture. Kitchen, bathroom and utility layouts may differ to build, and specific plot sizes and layouts may vary within the same unit type. Window sizes may vary. Positions are indicative only and positions may vary. For further clarification regarding specific individual plots, please ask our Lettings Associates.



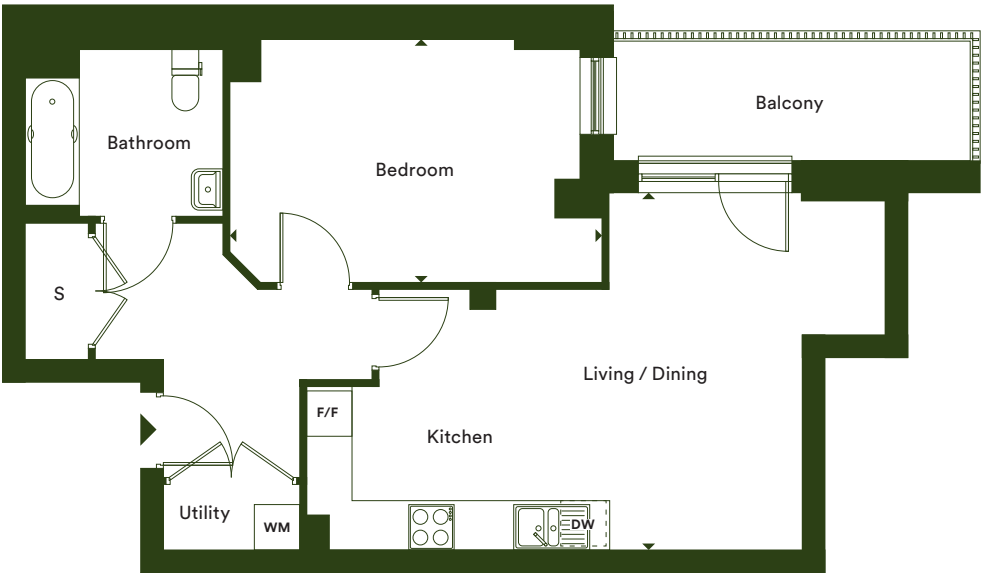
# One bedroom apartment

Type 12  
Apartments 44, 46, 49, 51, 54, 56, 59, 61, 64, 66, 69 & 71

Apartments 44, 49, 54, 59, 64 & 69 are mirrored



Floors 6 to 11



### Accommodation

Living / Dining / Kitchen	4.81m x 7.62m	15' 9" x 25'
Bedroom	3.25m x 4.67m	10' 8" x 15' 3"
<b>Total Internal Area</b>	<b>60.6 m²</b>	<b>652.29 ft²</b>
Balcony	1.50m x 4.99m	4' 11" x 16' 4"

### Floor Plot Apartment

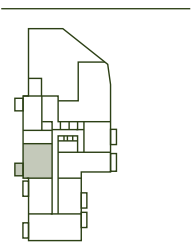
6	6.03	44
6	6.05	46
7	7.03	49
7	7.05	51
8	8.03	54
8	8.05	56
9	9.03	59
9	9.05	61
10	10.03	64
10	10.05	66
11	11.03	69
11	11.05	71

F/F – Fridge/Freezer | S – Storage | WM – Washing Machine | DW – Dishwasher

\*Denotes apartments that are opposite handed/mirror image to the plans drawn. Garden sizes vary between plots, check the site plan and garden sizes for clarification. The floor plans provided are intended to only give a general indication of the proposed floor layout, are not drawn to scale and are not intended to form part of any offer, contract, warranty or representation. Measurements are given to the widest point, are approximate and are given as a guide only. They must not be relied upon as a statement or representation of fact. Do not use these measurements for carpet sizes, appliance spaces or items of furniture. Kitchen, bathroom and utility layouts may differ to build, and specific plot sizes and layouts may vary within the same unit type. Window sizes may vary. Positions are indicative only and positions may vary. For further clarification regarding specific individual plots, please ask our Lettings Associates.

# One bedroom apartment

Type 18  
Apartment 1



Floor 1



### Accommodation

Living / Dining / Kitchen	5.31m x 5.25m	17' 5" x 17' 2"
Bedroom	3.54m x 4.33m	11' 7" x 14' 2"
<b>Total Internal Area</b>	<b>61.9 m²</b>	<b>666.3 ft²</b>
Balcony	3.41m x 2.20m	11' 2" x 7' 2"

### Floor Plot Apartment

1	1.01	1
---	------	---

F/F – Fridge/Freezer | S – Storage | WM – Washing Machine | DW – Dishwasher

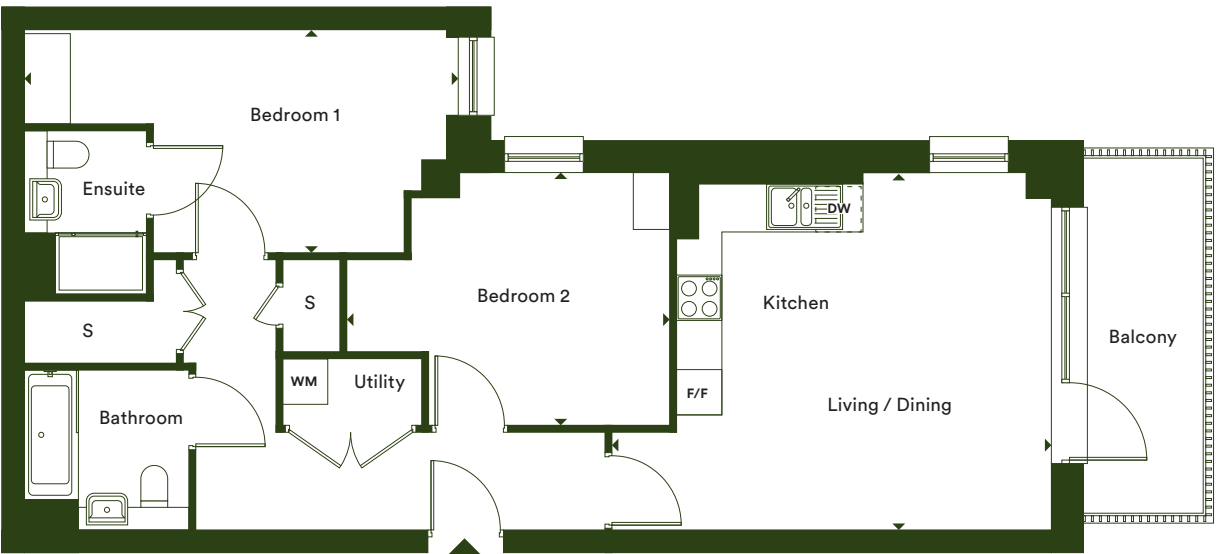
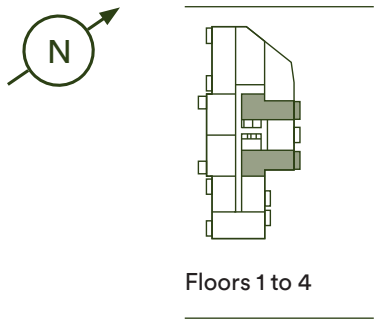
\*Denotes apartments that are opposite handed/mirror image to the plans drawn. Garden sizes vary between plots, check the site plan and garden sizes for clarification. The floor plans provided are intended to only give a general indication of the proposed floor layout, are not drawn to scale and are not intended to form part of any offer, contract, warranty or representation. Measurements are given to the widest point, are approximate and are given as a guide only. They must not be relied upon as a statement or representation of fact. Do not use these measurements for carpet sizes, appliance spaces or items of furniture. Kitchen, bathroom and utility layouts may differ to build, and specific plot sizes and layouts may vary within the same unit type. Window sizes may vary. Positions are indicative only and positions may vary. For further clarification regarding specific individual plots, please ask our Lettings Associates.



# Two bedroom apartment

Type 33  
Apartments 5, 13, 15, 23 & 33

Apartments 5, 13, 23 & 33 are mirrored



Accommodation		
Living / Dining / Kitchen	4.77m x 5.78m	15' 7" x 18' 11"
Bedroom 1	2.98m x 5.62m	9' 9" x 18' 5"
Bedroom 2	3.38m x 4.28m	11' 1" x 14'
Total Internal Area	74.4 m²	800.8 ft²
Balcony	1.50m x 4.76m	4' 11" x 15' 7"

Floor	Plot	Apartment
1	1.05	5
2	2.07	13
2	2.09	15
3	3.07	23
4	4.07	33

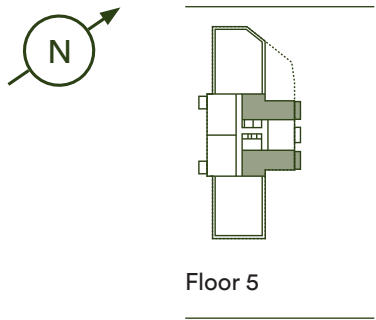
F/F – Fridge/Freezer | S – Storage | WM – Washing Machine | DW – Dishwasher

\*Denotes apartments that are opposite handed/mirror image to the plans drawn. Garden sizes vary between plots, check the site plan and garden sizes for clarification. The floor plans provided are intended to only give a general indication of the proposed floor layout, are not drawn to scale and are not intended to form part of any offer, contract, warranty or representation. Measurements are given to the widest point, are approximate and are given as a guide only. They must not be relied upon as a statement or representation of fact. Do not use these measurements for carpet sizes, appliance spaces or items of furniture. Kitchen, bathroom and utility layouts may differ to build, and specific plot sizes and layouts may vary within the same unit type. Window sizes may vary. Positions are indicative only and positions may vary. For further clarification regarding specific individual plots, please ask our Lettings Associates.

# Two bedroom apartment

Type 33 A  
Apartments 39 & 41

Apartment 41 is mirrored



Accommodation		
Living / Dining / Kitchen	4.77m x 5.74m	15' 7" x 18' 10"
Bedroom 1	2.84m x 5.62m	9' 3" x 18' 5"
Bedroom 2	3.35m x 4.34m	10' 11" x 14' 2"
Total Internal Area	75.1 m²	808.4 ft²
Balcony	1.50m x 4.76m	4' 11" x 15' 7"

Floor	Plot	Apartment
5	5.03	39
5	5.05	41

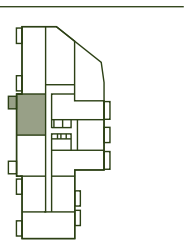
F/F – Fridge/Freezer | S – Storage | WM – Washing Machine | DW – Dishwasher

\*Denotes apartments that are opposite handed/mirror image to the plans drawn. Garden sizes vary between plots, check the site plan and garden sizes for clarification. The floor plans provided are intended to only give a general indication of the proposed floor layout, are not drawn to scale and are not intended to form part of any offer, contract, warranty or representation. Measurements are given to the widest point, are approximate and are given as a guide only. They must not be relied upon as a statement or representation of fact. Do not use these measurements for carpet sizes, appliance spaces or items of furniture. Kitchen, bathroom and utility layouts may differ to build, and specific plot sizes and layouts may vary within the same unit type. Window sizes may vary. Positions are indicative only and positions may vary. For further clarification regarding specific individual plots, please ask our Lettings Associates.

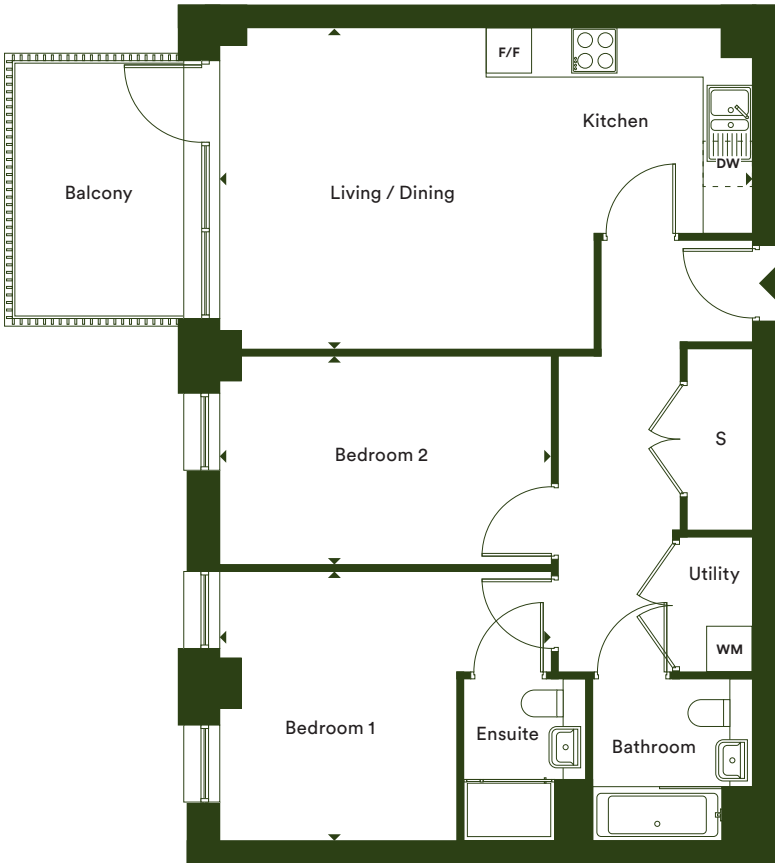


# Two bedroom apartment

Type 36  
Apartments 8, 18 & 28



Floors 2 to 4



### Accommodation

Living / Dining / Kitchen	4.24m x 7.02m	13' 10" x 23'
Bedroom 1	3.57m x 4.38m	11' 8" x 14' 4"
Bedroom 2	2.78m x 4.38m	9' 1" x 14' 4"
<b>Total Internal Area</b>	<b>75.5 m<sup>2</sup></b>	<b>812.68 ft<sup>2</sup></b>
Balcony	3.41m x 2.20m	11' 2" x 7' 2"

### Floor Plot Apartment

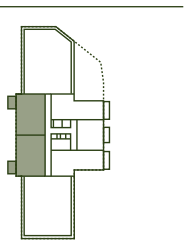
2	2.02	8
3	3.02	18
4	4.02	28

F/F – Fridge/Freezer | S – Storage | WM – Washing Machine | DW – Dishwasher

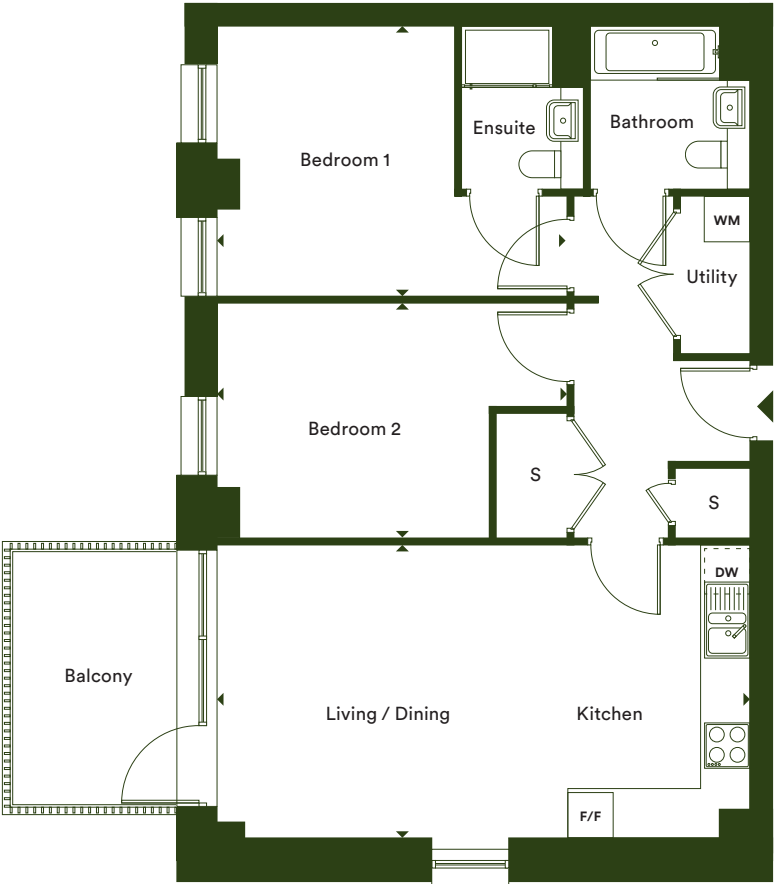
\*Denotes apartments that are opposite handed/mirror image to the plans drawn. Garden sizes vary between plots, check the site plan and garden sizes for clarification. The floor plans provided are intended to only give a general indication of the proposed floor layout, are not drawn to scale and are not intended to form part of any offer, contract, warranty or representation. Measurements are given to the widest point, are approximate and are given as a guide only. They must not be relied upon as a statement or representation of fact. Do not use these measurements for carpet sizes, appliance spaces or items of furniture. Kitchen, bathroom and utility layouts may differ to build, and specific plot sizes and layouts may vary within the same unit type. Window sizes may vary. Positions are indicative only and positions may vary. For further clarification regarding specific individual plots, please ask our Lettings Associates.

# Two bedroom apartment

Type 36 A  
Apartments 37, 38, 42, 43, 47, 48, 52, 53, 57, 58, 62, 63, 67 & 68



Floors 5 to 11



### Accommodation

Living / Dining / Kitchen	4.07m x 6.69m	13' 4" x 21' 11"
Bedroom 1	3.10m x 4.64m	10' 2" x 16' 2"
Bedroom 2	3.61m x 4.64m	9' 1" x 16' 2"
<b>Total Internal Area</b>	<b>76.5 m<sup>2</sup></b>	<b>823.4 ft<sup>2</sup></b>
Balcony	3.41m x 2.20m	11' 2" x 7' 2"

F/F – Fridge/Freezer | S – Storage | WM – Washing Machine | DW – Dishwasher

\*Denotes apartments that are opposite handed/mirror image to the plans drawn. Garden sizes vary between plots, check the site plan and garden sizes for clarification. The floor plans provided are intended to only give a general indication of the proposed floor layout, are not drawn to scale and are not intended to form part of any offer, contract, warranty or representation. Measurements are given to the widest point, are approximate and are given as a guide only. They must not be relied upon as a statement or representation of fact. Do not use these measurements for carpet sizes, appliance spaces or items of furniture. Kitchen, bathroom and utility layouts may differ to build, and specific plot sizes and layouts may vary within the same unit type. Window sizes may vary. Positions are indicative only and positions may vary. For further clarification regarding specific individual plots, please ask our Lettings Associates.

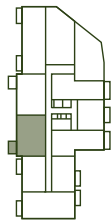
### Floor Plot Apartment

5	5.01	37
5	5.02	38
6	6.01	42
6	6.02	43
7	7.01	47
7	7.02	48
8	8.01	52
8	8.02	53
9	9.01	57
9	9.02	58
10	10.01	62
10	10.02	63
11	11.01	67
11	11.02	68

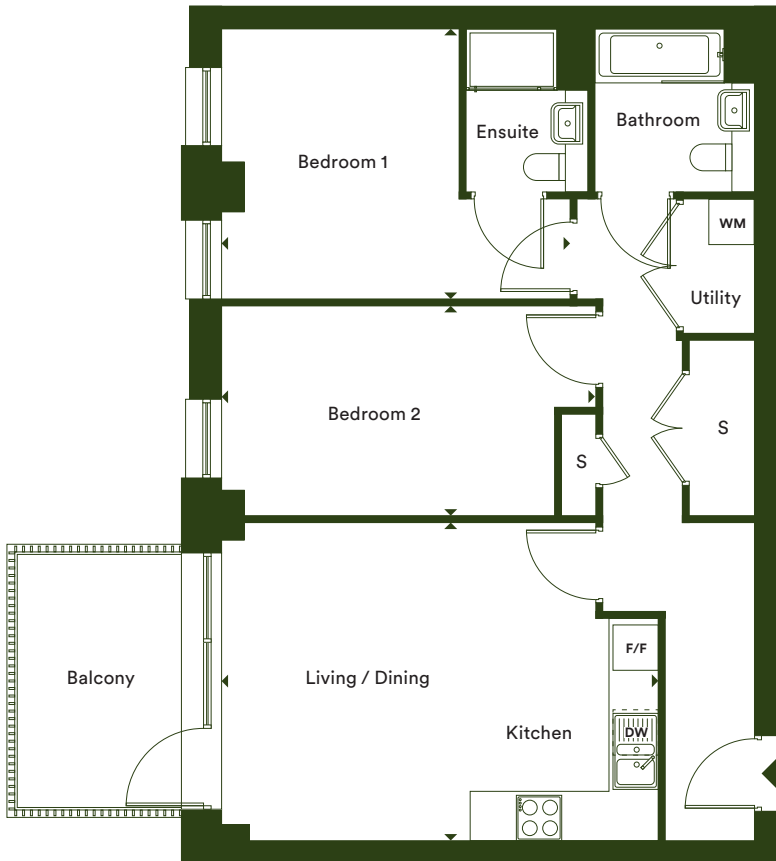


# Two bedroom apartment

Type 36 B  
Apartments 9, 19 & 29



Floors 2 to 4



## Accommodation

Living / Dining / Kitchen	4.07m x 5.80m	13' 4" x 19'
Bedroom 1	3.61m x 4.64m	11' 10" x 15' 3"
Bedroom 2	2.75m x 4.93m	9' x 16' 2"
<b>Total Internal Area</b>	<b>75.4 m<sup>2</sup></b>	<b>811.6 ft<sup>2</sup></b>
Balcony	3.41m x 2.20m	11' 2" x 7' 2"

## Floor Plot Apartment

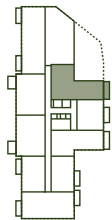
Floor	Plot	Apartment
2	2.03	9
3	3.03	19
4	4.03	29

F/F – Fridge/Freezer | S – Storage | WM – Washing Machine | DW – Dishwasher

\*Denotes apartments that are opposite handed/mirror image to the plans drawn. Garden sizes vary between plots, check the site plan and garden sizes for clarification. The floor plans provided are intended to only give a general indication of the proposed floor layout, are not drawn to scale and are not intended to form part of any offer, contract, warranty or representation. Measurements are given to the widest point, are approximate and are given as a guide only. They must not be relied upon as a statement or representation of fact. Do not use these measurements for carpet sizes, appliance spaces or items of furniture. Kitchen, bathroom and utility layouts may differ to build, and specific plot sizes and layouts may vary within the same unit type. Window sizes may vary. Positions are indicative only and positions may vary. For further clarification regarding specific individual plots, please ask our Lettings Associates.

# Two bedroom apartment

Type 64  
Apartments 25 & 35



Floors 3 to 4



## Accommodation

Living / Dining / Kitchen	4.77m x 6.11m	15' 7" x 20'
Bedroom 1	3.69m x 5.62m	12' 1" x 18' 5"
Bedroom 2	3.01m x 3.98m	9' 10" x 13'
<b>Total Internal Area</b>	<b>88.3 m<sup>2</sup></b>	<b>950.5 ft<sup>2</sup></b>
Balcony	1.50m x 4.76m	4' 11" x 15' 7"

## Floor Plot Apartment

Floor	Plot	Apartment
3	3.09	25
4	4.09	35

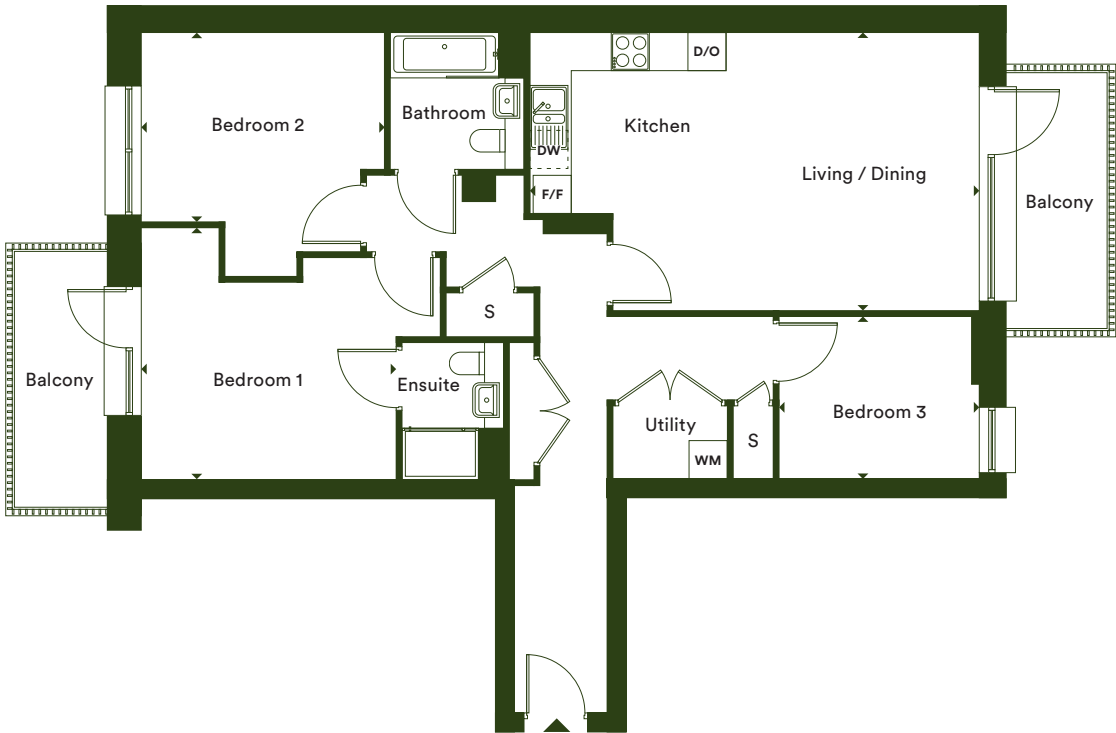
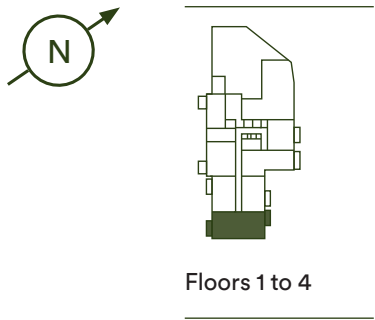
F/F – Fridge/Freezer | S – Storage | WM – Washing Machine | DW – Dishwasher

\*Denotes apartments that are opposite handed/mirror image to the plans drawn. Garden sizes vary between plots, check the site plan and garden sizes for clarification. The floor plans provided are intended to only give a general indication of the proposed floor layout, are not drawn to scale and are not intended to form part of any offer, contract, warranty or representation. Measurements are given to the widest point, are approximate and are given as a guide only. They must not be relied upon as a statement or representation of fact. Do not use these measurements for carpet sizes, appliance spaces or items of furniture. Kitchen, bathroom and utility layouts may differ to build, and specific plot sizes and layouts may vary within the same unit type. Window sizes may vary. Positions are indicative only and positions may vary. For further clarification regarding specific individual plots, please ask our Lettings Associates.



# Three bedroom apartment

Type 38  
Apartments 3, 11, 21 & 31



Accommodation		
Living / Dining / Kitchen	4.50m x 7.12m	14' 9" x 23' 4"
Bedroom 1	4.00m x 4.04m	13' 1" x 13' 3"
Bedroom 2	3.10m x 3.86m	10' 2" x 12' 8"
Bedroom 3	2.60m x 3.20m	8' 6" x 10' 6"
Total Internal Area	98.1 m²	1055.9 ft²
Balcony	1.50m x 4.08m	4' 11" x 13' 4"

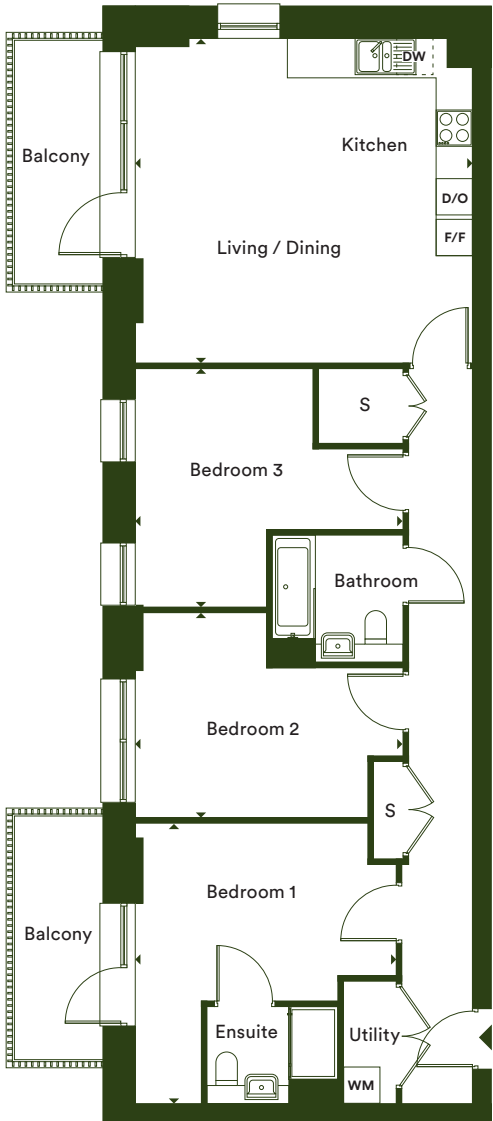
Floor	Plot	Apartment
1	1.03	3
2	2.05	11
3	3.05	21
4	4.05	31

F/F – Fridge/Freezer | S – Storage | WM – Washing Machine | DW – Dishwasher | D/O – Double Oven

\*Denotes apartments that are opposite handed/mirror image to the plans drawn. Garden sizes vary between plots, check the site plan and garden sizes for clarification. The floor plans provided are intended to only give a general indication of the proposed floor layout, are not drawn to scale and are not intended to form part of any offer, contract, warranty or representation. Measurements are given to the widest point, are approximate and are given as a guide only. They must not be relied upon as a statement or representation of fact. Do not use these measurements for carpet sizes, appliance spaces or items of furniture. Kitchen, bathroom and utility layouts may differ to build, and specific plot sizes and layouts may vary within the same unit type. Window sizes may vary. Positions are indicative only and positions may vary. For further clarification regarding specific individual plots, please ask our Lettings Associates.

# Three bedroom apartment

Type 50  
Apartments 7, 17 & 27



Accommodation		
Living / Dining / Kitchen	5.41m x 5.62m	17' 9" x 18' 5"
Bedroom 1	4.67m x 4.35m	15' 3" x 14' 3"
Bedroom 2	3.95m x 4.46m	12' 1" x 14' 7"
Bedroom 3	3.41m x 4.46m	11' 2" x 14' 7"
Total Internal Area	98 m²	1054.9 ft²
Balcony	1.50m x 4.08m	4' 11" x 13' 4"

Floor	Plot	Apartment
2	2.01	7
3	3.01	17
4	4.01	27

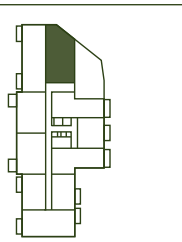
F/F – Fridge/Freezer | S – Storage | WM – Washing Machine | DW – Dishwasher | D/O – Double Oven

\*Denotes apartments that are opposite handed/mirror image to the plans drawn. Garden sizes vary between plots, check the site plan and garden sizes for clarification. The floor plans provided are intended to only give a general indication of the proposed floor layout, are not drawn to scale and are not intended to form part of any offer, contract, warranty or representation. Measurements are given to the widest point, are approximate and are given as a guide only. They must not be relied upon as a statement or representation of fact. Do not use these measurements for carpet sizes, appliance spaces or items of furniture. Kitchen, bathroom and utility layouts may differ to build, and specific plot sizes and layouts may vary within the same unit type. Window sizes may vary. Positions are indicative only and positions may vary. For further clarification regarding specific individual plots, please ask our Lettings Associates.

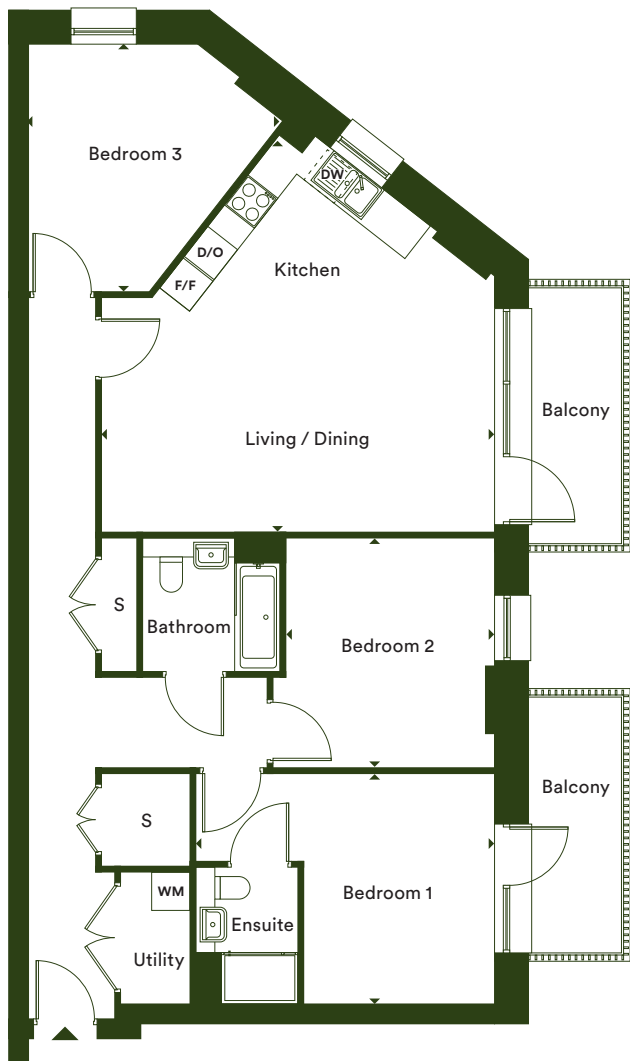


# Three bedroom apartment

Type 53  
Apartments 16, 26 & 36



Floors 2 to 4



## Accommodation

Living / Dining / Kitchen	4.06m x 6.22m	13' 3" x 20' 4"
Bedroom 1	3.66m x 4.73m	12' x 15' 6"
Bedroom 2	3.63m x 3.52m	11' 10" x 11' 6"
Bedroom 3	3.94m x 3.57m	12' 11" x 11' 8"
<b>Total Internal Area</b>	<b>102.5 m<sup>2</sup></b>	<b>1103.3 ft<sup>2</sup></b>
Balcony	1.50m x 4.08m	4' 11" x 13' 4"

## Floor Plot Apartment

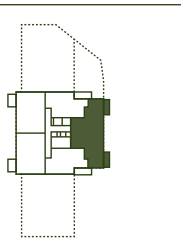
2	2.10	16
3	3.10	26
4	4.10	36

F/F – Fridge/Freezer | S – Storage | WM – Washing Machine | DW – Dishwasher | D/O – Double Oven

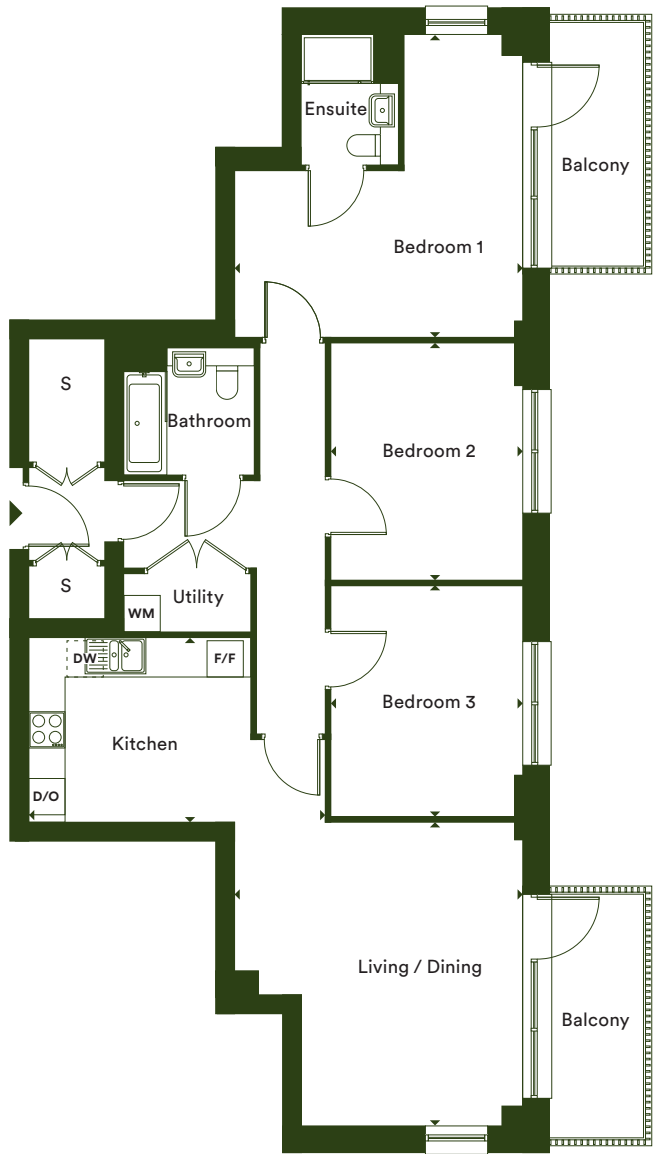
\*Denotes apartments that are opposite handed/mirror image to the plans drawn. Garden sizes vary between plots, check the site plan and garden sizes for clarification. The floor plans provided are intended to only give a general indication of the proposed floor layout, are not drawn to scale and are not intended to form part of any offer, contract, warranty or representation. Measurements are given to the widest point, are approximate and are given as a guide only. They must not be relied upon as a statement or representation of fact. Do not use these measurements for carpet sizes, appliance spaces or items of furniture. Kitchen, bathroom and utility layouts may differ to build, and specific plot sizes and layouts may vary within the same unit type. Window sizes may vary. Positions are indicative only and positions may vary. For further clarification regarding specific individual plots, please ask our Lettings Associates.

# Three bedroom apartment

Type 54  
Apartments 45, 50, 55, 60, 65 & 70



Floors 6 to 11



## Accommodation

Living / Dining	5.06m x 4.81m	16' 7" x 15' 9"
Kitchen	3.10m x 3.69m	10' 2" x 12' 1"
Bedroom 1	5.03m x 4.81m	16' 6" x 15' 9"
Bedroom 2	3.94m x 3.20m	12' 1" x 10' 6"
Bedroom 3	3.83m x 3.20m	12' 6" x 10' 6"
<b>Total Internal Area</b>	<b>108.1 m<sup>2</sup></b>	<b>1163.6 ft<sup>2</sup></b>
Balcony	1.50m x 4.08m	4' 11" x 13' 4"

## Floor Plot Apartment

6	6.04	45
7	7.04	50
8	8.04	55
9	9.04	60
10	10.04	65
11	11.04	70

F/F – Fridge/Freezer | S – Storage | WM – Washing Machine | DW – Dishwasher | D/O – Double Oven

\*Denotes apartments that are opposite handed/mirror image to the plans drawn. Garden sizes vary between plots, check the site plan and garden sizes for clarification. The floor plans provided are intended to only give a general indication of the proposed floor layout, are not drawn to scale and are not intended to form part of any offer, contract, warranty or representation. Measurements are given to the widest point, are approximate and are given as a guide only. They must not be relied upon as a statement or representation of fact. Do not use these measurements for carpet sizes, appliance spaces or items of furniture. Kitchen, bathroom and utility layouts may differ to build, and specific plot sizes and layouts may vary within the same unit type. Window sizes may vary. Positions are indicative only and positions may vary. For further clarification regarding specific individual plots, please ask our Lettings Associates.



# L&Q's portfolio of homes to rent

If you choose to rent, you want the pick of rental properties so you can find the one that best fits your needs, your lifestyle and your budget.

As one of London's most experienced landlords, L&Q understands what renters want and don't believe you should compromise any element of your new rental home, quality or service.


That is why we are creating the UK's widest choice of new purpose-built and newly refurbished homes to rent across London and the South East.

Based on our 60 years' experience, L&Q has streamlined the lettings process for our tenants to ensure a responsive and comprehensive lettings service.


We offer our tenants the right locations, good value and great transport connections. All our brand new or newly refurbished apartments are well appointed, and everyone is backed by a dedicated property manager, which means support is only ever a phone call away.

As a long-term investor in housing, L&Q wants to simplify the process to give you more time and energy to focus on what's important to you. We offer you the peace of mind that the standard you expect is what you receive when you rent with us.


## What you can expect when you choose to rent from L&Q




Excellent transport connections for easy commuting




The right locations in established neighbourhoods




No hidden costs, and good value for money




New purpose-built or newly refurbished accommodation



Well-appointed homes



Dedicated property manager on the end of a phone



Comprehensive letting service from an experienced, responsible and reliable landlord

# Move into your LLR home in 10 easy steps:



\*Note LLR is a stepping stone for those who are currently unable to purchase a home via Shared Ownership or through the open market and wish to transition from renting to homeownership.

^Please note L&Q are unable to confirm tenancy start dates prior to this stage.



## Portra Rise Harrow, HA1

@ llrportrarise@lqgroup.org.uk

☎ 020 8189 0429

🌐 lqhomes.com/portrarise



### Disclaimer

All information in this document is correct at the time of going to print. Computer generated images are for illustrative purposes only and dimensions are not intended to form part of any contract or warranty. Furniture and landscaping are shown for illustrative purposes only. Individual features such as windows, brick, materials and colours as may heating and electrical layouts. We aim to build according to the layout, but occasionally we do have to change property designs, boundaries, landscaping and the other positions of roads, footpaths, street lighting and other features as the development proceeds. All services and facilities may not be available on completion of the property. For further clarification please ask our Lettings Associates.

Registered office: L&Q, 29-35 West Ham Lane, Stratford, London E15 4PH. Homes & Communities Agency L4517.  
Registered Society 30441R Exempt charity.