

-THE- QUARRY

ERITH

GAUGERAIL COURT

FLOOR PLANS & SPECIFICATION

- FIND YOUR PLACE -

WHERE QUALITY OF
LIFE COMES FIRST



SPECIFICATION

KITCHEN

- Individually designed contemporary kitchens with soft close doors and drawers
- Under cabinet LED lighting
- Laminate worktop with matching upstands
- Stainless steel splashback behind hob
- Stainless steel 1 1/2 bowl sink with chrome mixer tap
- Fully integrated appliances including oven, induction hob, integrated extractor, fridge freezer and dishwasher
- Washer dryer (location varies between plots)

BATHROOM

- Chrome bath, shower and basin taps
- Wall mounted white hand basin
- Wall hung WC with soft close seat
- Concealed cistern and dual flushplate
- White bath with fixed shower screen
- Chrome electric heated towel rail
- Made to measure mirror
- Shaver socket
- Ceramic wall tiles in a contemporary colour palette
- Amtico flooring

EN-SUITE

- Chrome shower and basin taps
- Wall mounted white hand basin
- Wall hung WC with soft close seat
- Concealed cistern and dual flush plate
- White shower tray with contemporary fixed shower screen and swivel panel
- Chrome electric heated tail rail
- Made to measure mirror above basin or WC
- Shaver socket
- Ceramic wall tiles in a contemporary colour palette
- Amtico flooring

HEATING, ELECTRICAL & LIGHTING

- Hot water provided by individual cylinder situated within hallway storage cupboard
- Individual energy efficient electric radiators with built-in thermostat with the ability to control heating via smart phone app using a hub (sold separately)
- White sockets throughout, certain sockets with USB ports
- LED downlights to kitchen, WC, bathroom, ensuite, hallways and open plan kitchen/dining and living room
- Pendant lighting to all bedrooms
- TV/SAT/FM outlets and BT outlet in living room
- Mains operated ceiling mounted smoke/heat detectors with battery powered back up
- Communal integrated reception system
- All homes are fiber optic enabled (subject to subscription)

GENERAL

- Secure communal cycle storage and bin store facilities
- 12 year NHBC Buildmark Choice warranty
- Access to communal gardens
- Allocated basement or street level car parking space to the majority of homes
- Photovoltaic panels to the communal roofs benefit the communal zones only served by landlord electric supply
- PAYC active car charging facility or passive supply for future installation to all parking bays
- Secure by design compliant

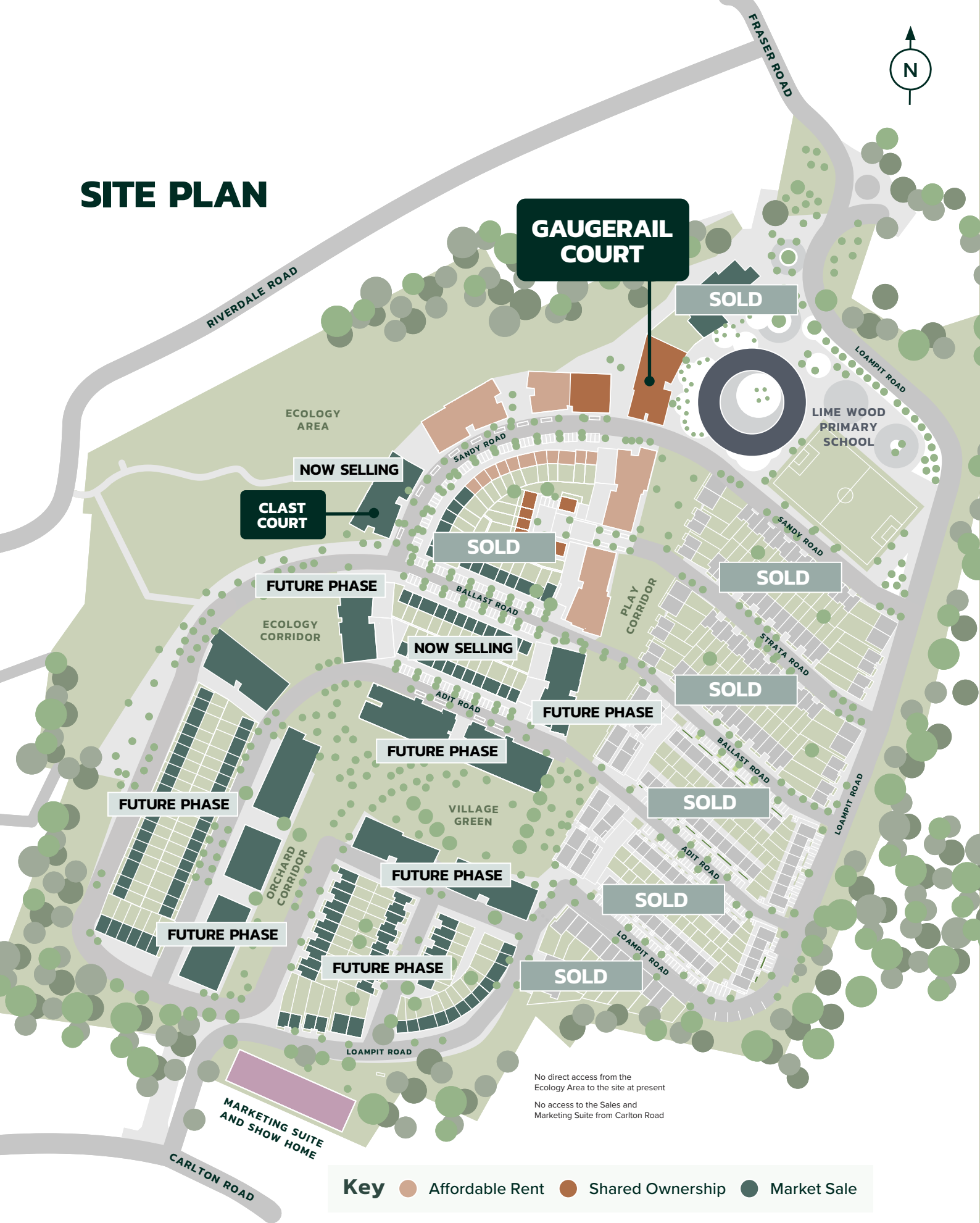
FINISHES

- Amtico flooring to kitchens, bathrooms, ensuites, hallways & living rooms
- Fitted carpets to all bedrooms
- Fitted wardrobe with chrome hanging rail to main bedroom
- White emulsion to all walls and ceilings
- White switches and sockets throughout



The specification of the properties is correct at the date of print/publication but may change as building works progress. Any images are indicative of the anticipated quality and style of the specification and may not represent the actual furnishings and fittings of the properties. Unless specifically incorporated in writing into the sales contract the specification is not intended to form part of any offer, contract, warranty or representation and should not be relied upon as a statement or representation of fact. CGI images are for illustrative purposes only. Please speak to our Sales Associates for further details.

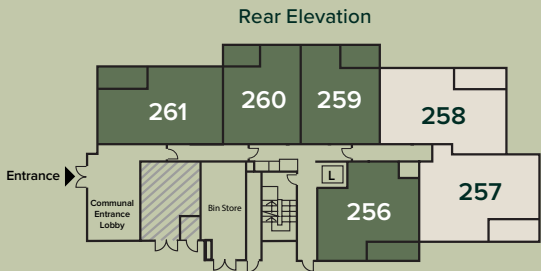
SITE PLAN



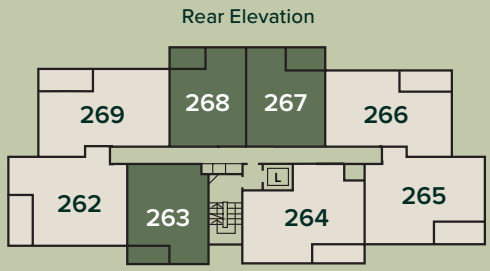
Please note that the properties are currently under construction. For further clarification regarding specific individual plots, please ask our Sales Associates. Any depiction of the layout does not show details of gradients of land, boundary treatments, local authority street lighting or landscaping. It is our current intention to build in accordance with this layout including the locations of Market Sale, Shared Ownership, Private Rent and other tenures shown. However, there may be occasions when house designs, boundaries, landscaping and positions of roads and footpaths, play areas and other facilities or amenities, or the type of tenure or tenure location, may change as the development proceeds and as properties are marketed. The layout shown and type of tenures included is subject to amendments resulting from changes to the planning permission and planning obligations for the development. Depictions of the layout should be used as guidance only. No site map (whether computer generated or otherwise) forms part of any offer, contract, warranty, or representation and are for illustrative and guidance purposes only. Quality of this technology may vary. In relation to computer generated images, minimum dimensions have been used to generate this image and as a result dimensions may vary (and should not be relied on by you).

PLOT LOCATORS

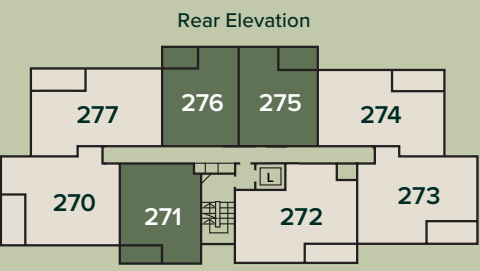
GROUND FLOOR



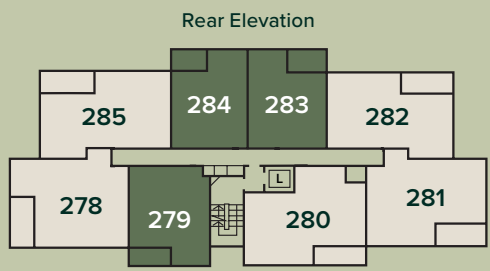
FIRST FLOOR



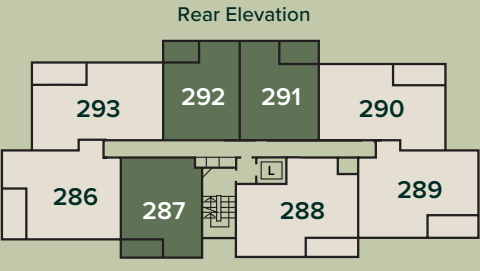
SECOND FLOOR



THIRD FLOOR



FOURTH FLOOR

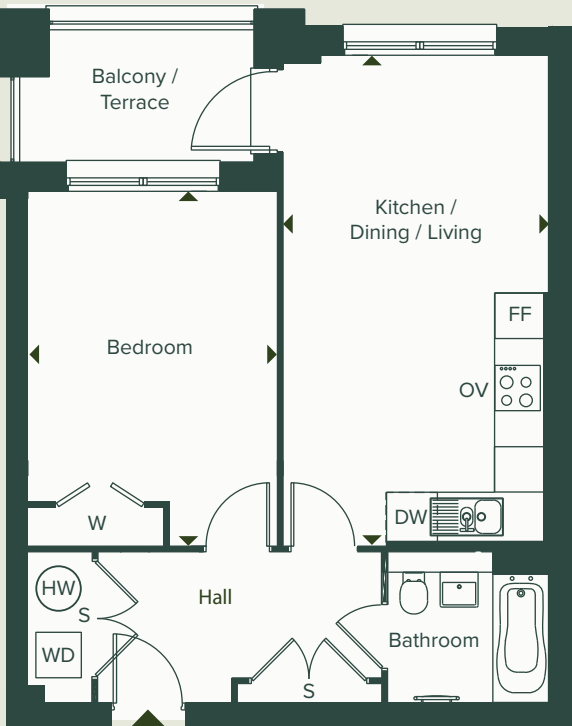
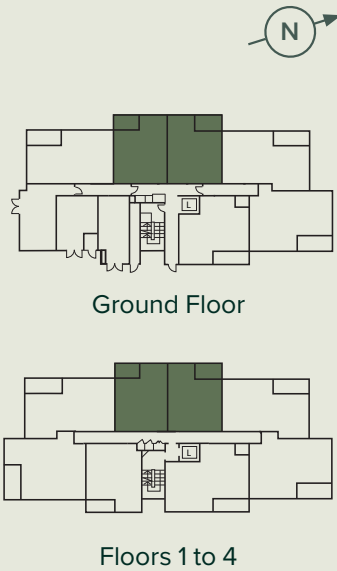


- 1 bedroom Shared Ownership apartments
- 2 bedroom Shared Ownership apartments
- L Lift
- Plant Room – no access to residents

1 BEDROOM APARTMENT

Type B-04
Plots 259*, 260, 267*, 268, 275*, 276, 283*,
284, 291* & 292

*Plots are handed to the plans drawn



DIMENSIONS

Kitchen / Living / Dining	6.49m x 3.51m	21' 4" x 11' 6"
Bedroom	4.69m x 3.30m	15' 5" x 10' 10"
Total Internal Area	51.5 m²	554 ft²
Balcony / Terrace	5.20 m²	56.0 ft²

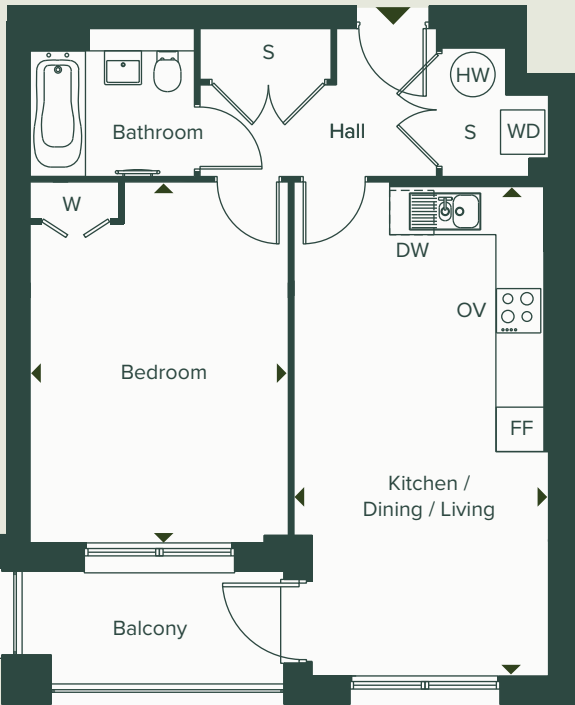
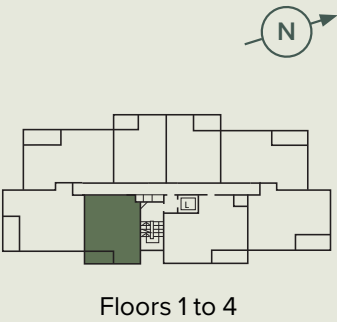
FLOOR	PLOTS
Ground	259, 260
1st	267, 268
2nd	275, 276
3rd	283, 284
4th	291, 292

WD – Washer / Dryer | DW – Dishwasher | OV – Oven | F/F – Fridge/Freezer | S – Storage** | W – Wardrobe | HW – Hot Water Cylinder

*Denotes apartments that are opposite handed/mirror image to the plans drawn. The floor plans provided are intended to only give a general indication of the proposed floor layout, are not drawn to scale and are not intended to form part of any offer, contract, warranty or representation. Measurements are given to the widest point, are approximate and are given as a guide only. They must not be relied upon as a statement or representation of fact. **Please note, the utility cupboard also houses the hot water cylinder as well as the mechanical and electrical controls which will reduce the storage space available. Do not use these measurements for carpet sizes, appliance spaces or items of furniture. Kitchen, bathroom and utility layouts may differ to build, and specific plot sizes and layouts may vary within the same unit type. Window sizes may vary. For further clarification regarding specific individual plots, please ask our Sales Associate.

1 BEDROOM APARTMENT

Type B-08
Plots 263, 271, 279 & 287



DIMENSIONS

Kitchen / Living / Dining	6.62m x 3.44m	21'8" x 11' 3"
Bedroom	4.88m x 3.49m	16' 0" x 11'5"
Total Internal Area	52.6 m²	566 ft²
Balcony	5.26 m²	56.6 ft²

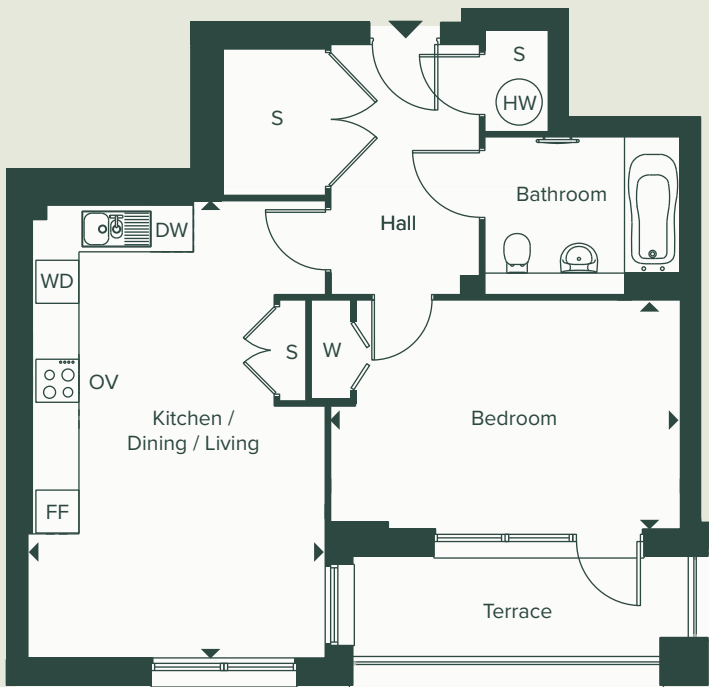
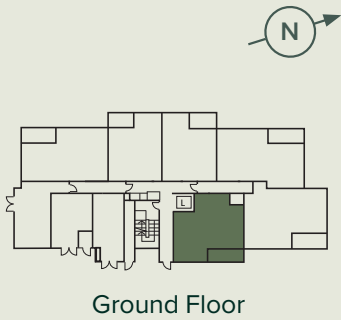
FLOOR	PLOTS
1st	263
2nd	271
3rd	279
4th	287

WD – Washer / Dryer | DW – Dishwasher | OV – Oven | F/F – Fridge/Freezer | S – Storage** | W – Wardrobe | HW – Hot Water Cylinder

*Denotes apartments that are opposite handed/mirror image to the plans drawn. The floor plans provided are intended to only give a general indication of the proposed floor layout, are not drawn to scale and are not intended to form part of any offer, contract, warranty or representation. Measurements are given to the widest point, are approximate and are given as a guide only. They must not be relied upon as a statement or representation of fact. **Please note, the utility cupboard also houses the hot water cylinder as well as the mechanical and electrical controls which will reduce the storage space available. Do not use these measurements for carpet sizes, appliance spaces or items of furniture. Kitchen, bathroom and utility layouts may differ to build, and specific plot sizes and layouts may vary within the same unit type. Window sizes may vary. For further clarification regarding specific individual plots, please ask our Sales Associate.

1 BEDROOM APARTMENT

Type B-02
Plot 256



DIMENSIONS

Kitchen / Living / Dining	6.38m x 4.15m	20' 11" x 13' 7"
Bedroom	4.88m x 3.19m	16' 0" x 10' 5"
Total Internal Area	59.6 m²	555 ft²
Terrace	7.00m²	75.3 ft²

FLOOR PLOTS

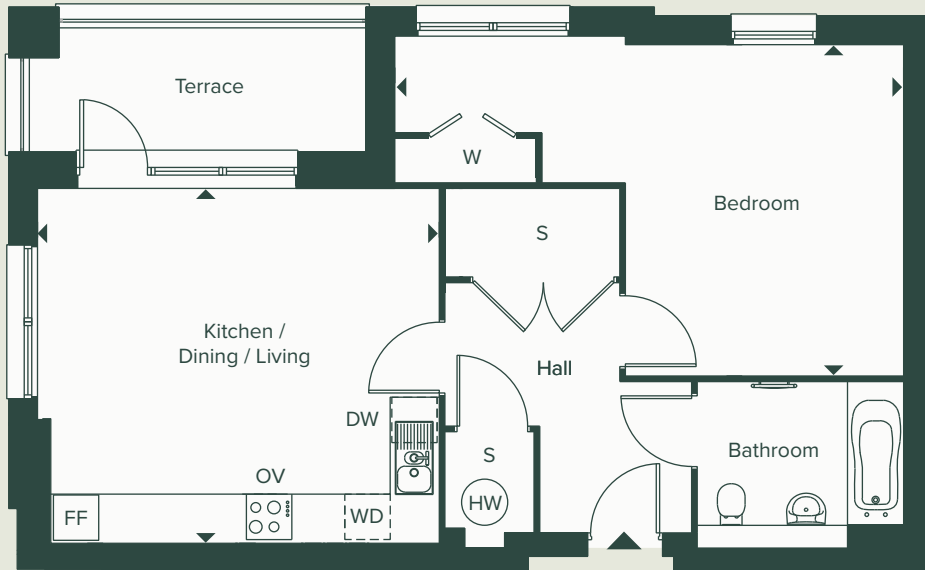
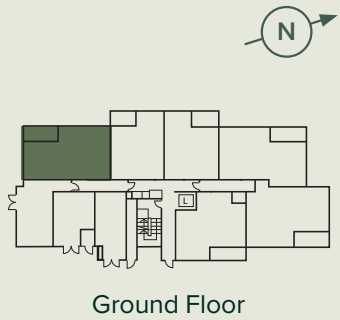
Ground	256
--------	-----

WD – Washer / Dryer | DW – Dishwasher | OV – Oven | F/F – Fridge/Freezer | S – Storage** | W – Wardrobe | HW – Hot Water Cylinder

*Denotes apartments that are opposite handed/mirror image to the plans drawn. The floor plans provided are intended to only give a general indication of the proposed floor layout, are not drawn to scale and are not intended to form part of any offer, contract, warranty or representation. Measurements are given to the widest point, are approximate and are given as a guide only. They must not be relied upon as a statement or representation of fact. **Please note, the utility cupboard also houses the hot water cylinder as well as the mechanical and electrical controls which will reduce the storage space available. Do not use these measurements for carpet sizes, appliance spaces or items of furniture. Kitchen, bathroom and utility layouts may differ to build, and specific plot sizes and layouts may vary within the same unit type. Window sizes may vary. For further clarification regarding specific individual plots, please ask our Sales Associate.

1 BEDROOM APARTMENT

Type B-03
Plots 261



DIMENSIONS

Kitchen / Living / Dining	5.31m x 4.69m	17' 5" x 15'4"
Bedroom	6.73m x 4.38m	22' 1" x 14' 4"
Total Internal Area	65.7 m²	707 ft²
Terrace	7.10 m²	76.4 ft²

FLOOR PLOTS

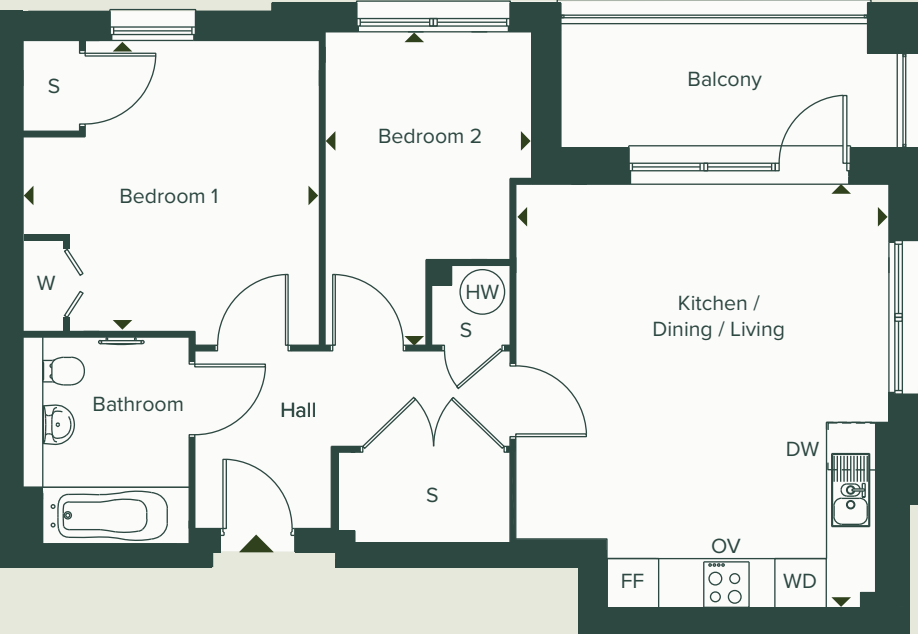
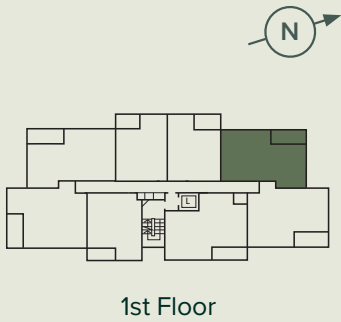
Ground	261
--------	-----

WD – Washer / Dryer | DW – Dishwasher | OV – Oven | F/F – Fridge/Freezer | S – Storage** | W – Wardrobe | HW – Hot Water Cylinder

*Denotes apartments that are opposite handed/mirror image to the plans drawn. The floor plans provided are intended to only give a general indication of the proposed floor layout, are not drawn to scale and are not intended to form part of any offer, contract, warranty or representation. Measurements are given to the widest point, are approximate and are given as a guide only. They must not be relied upon as a statement or representation of fact. **Please note, the utility cupboard also houses the hot water cylinder as well as the mechanical and electrical controls which will reduce the storage space available. Do not use these measurements for carpet sizes, appliance spaces or items of furniture. Kitchen, bathroom and utility layouts may differ to build, and specific plot sizes and layouts may vary within the same unit type. Window sizes may vary. For further clarification regarding specific individual plots, please ask our Sales Associate.

2 BEDROOM APARTMENT

Type B-11
Plot 266



DIMENSIONS

Kitchen / Living / Dining	5.60m x 4.93m	18' 4" x 16' 2"
Bedroom 1	3.92m x 3.85m	12' 10" x 12' 7"
Bedroom 2	4.14m x 2.73m	13' 7" x 8' 11"
Total Internal Area	68.9 m²	741 ft²
Balcony	7.15m²	76.9 ft²

FLOOR	PLOTS
1st	266

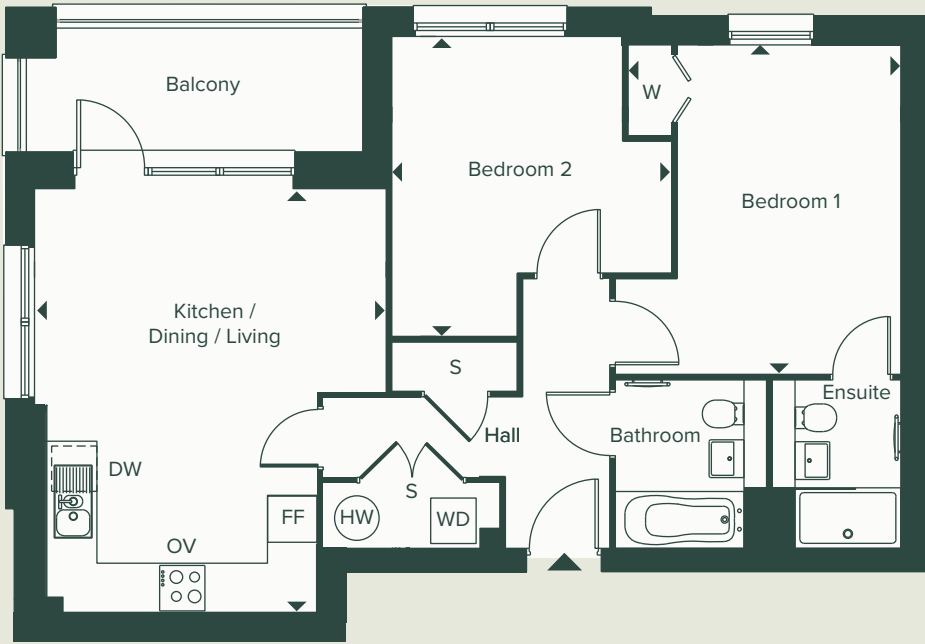
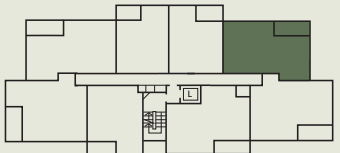
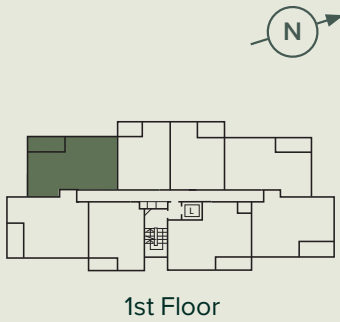
WD – Washer / Dryer | DW – Dishwasher | OV – Oven | F/F – Fridge/Freezer | S – Storage** | W – Wardrobe | HW – Hot Water Cylinder

*Denotes apartments that are opposite handed/mirror image to the plans drawn. The floor plans provided are intended to only give a general indication of the proposed floor layout, are not drawn to scale and are not intended to form part of any offer, contract, warranty or representation. Measurements are given to the widest point, are approximate and are given as a guide only. They must not be relied upon as a statement or representation of fact. **Please note, the utility cupboard also houses the hot water cylinder as well as the mechanical and electrical controls which will reduce the storage space available. Do not use these measurements for carpet sizes, appliance spaces or items of furniture. Kitchen, bathroom and utility layouts may differ to build, and specific plot sizes and layouts may vary within the same unit type. Window sizes may vary. For further clarification regarding specific individual plots, please ask our Sales Associate.

2 BEDROOM APARTMENT

Type B-10
Plots 269, 274*, 277, 282*, 285, 290* & 293

*Plots are handed to the plans drawn



DIMENSIONS

Kitchen / Living / Dining	5.60m x 4.65m	18' 4" x 15' 3"
Bedroom 1	4.35m x 3.61m	14' 3" x 11' 10"
Bedroom 2	3.97m x 3.70m	13' 0" x 12' 1"
Total Internal Area	69.1 m²	744 ft²
Balcony	7.10m²	76.4 ft²

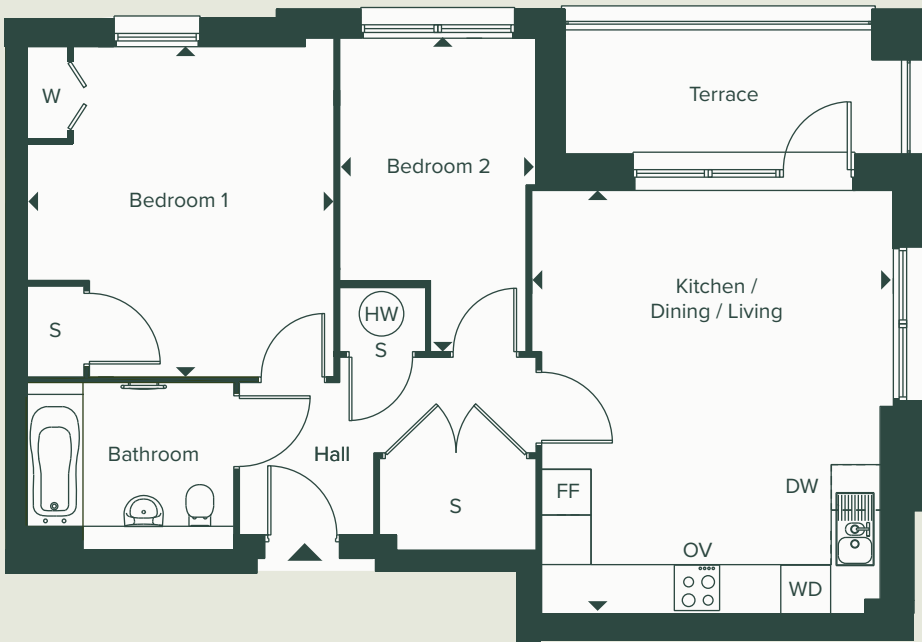
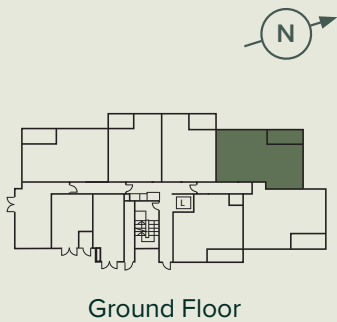
FLOOR	PLOTS
1st	269
2nd	274, 277
3rd	282, 285
4th	290, 293

WD – Washer / Dryer | DW – Dishwasher | OV – Oven | F/F – Fridge/Freezer | S – Storage** | W – Wardrobe | HW – Hot Water Cylinder

*Denotes apartments that are opposite handed/mirror image to the plans drawn. The floor plans provided are intended to only give a general indication of the proposed floor layout, are not drawn to scale and are not intended to form part of any offer, contract, warranty or representation. Measurements are given to the widest point, are approximate and are given as a guide only. They must not be relied upon as a statement or representation of fact. **Please note, the utility cupboard also houses the hot water cylinder as well as the mechanical and electrical controls which will reduce the storage space available. Do not use these measurements for carpet sizes, appliance spaces or items of furniture. Kitchen, bathroom and utility layouts may differ to build, and specific plot sizes and layouts may vary within the same unit type. Window sizes may vary. For further clarification regarding specific individual plots, please ask our Sales Associate.

2 BEDROOM APARTMENT

Type B-05
Plots 258



DIMENSIONS

Kitchen / Living / Dining	5.60m x 4.78m	18' 4" x 15' 8"
Bedroom 1	4.36m x 4.06m	14' 3" x 13' 3"
Bedroom 2	4.14m x 2.59m	13' 7" x 8' 6"
Total Internal Area	69.2 m²	745 ft²
Terrace	7.10m²	76.4 ft²

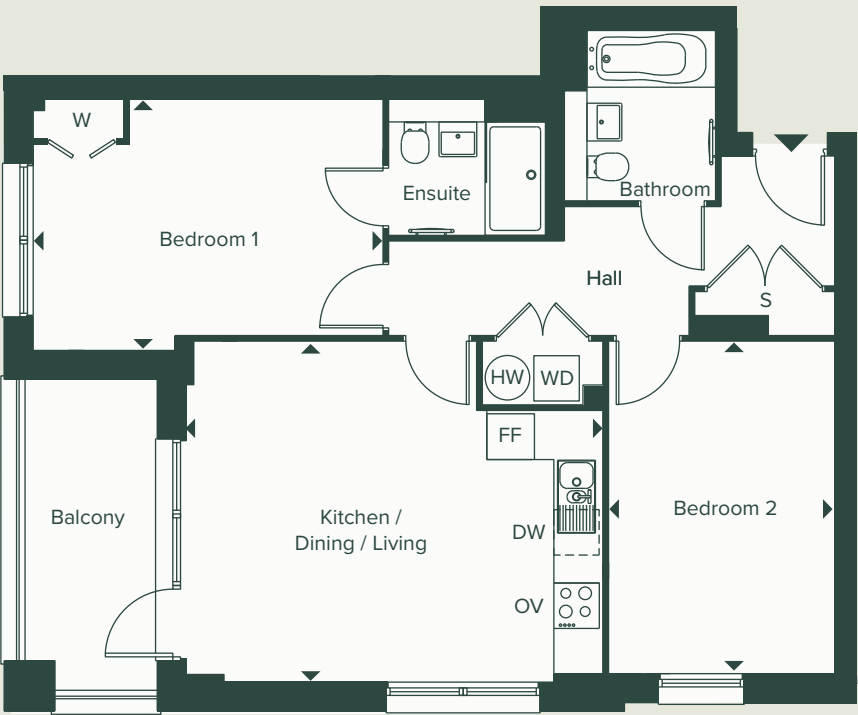
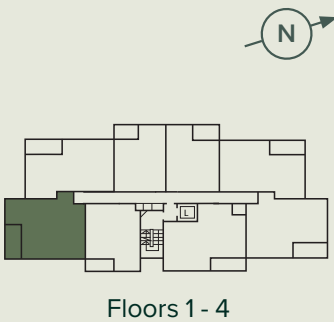
FLOOR	PLOTS
Ground	258

WD – Washer / Dryer | DW – Dishwasher | OV – Oven | F/F – Fridge/Freezer | S – Storage** | W – Wardrobe | HW – Hot Water Cylinder

*Denotes apartments that are opposite handed/mirror image to the plans drawn. The floor plans provided are intended to only give a general indication of the proposed floor layout, are not drawn to scale and are not intended to form part of any offer, contract, warranty or representation. Measurements are given to the widest point, are approximate and are given as a guide only. They must not be relied upon as a statement or representation of fact. **Please note, the utility cupboard also houses the hot water cylinder as well as the mechanical and electrical controls which will reduce the storage space available. Do not use these measurements for carpet sizes, appliance spaces or items of furniture. Kitchen, bathroom and utility layouts may differ to build, and specific plot sizes and layouts may vary within the same unit type. Window sizes may vary. For further clarification regarding specific individual plots, please ask our Sales Associate.

2 BEDROOM APARTMENT

Type B-09
Plots 262, 270, 278 & 286



DIMENSIONS

Kitchen / Living / Dining	5.51m x 4.51m	18' 1" x 14' 9"
Bedroom 1	4.62m x 3.32m	15' 2" x 10' 10"
Bedroom 2	4.39m x 2.99m	14' 5" x 9' 9"
Total Internal Area	69.5 m²	748 ft²
Balcony	7.00m²	75.3 ft²

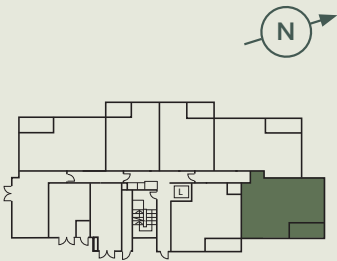
FLOOR	PLOTS
1st	262
2nd	270
3rd	278
4th	286

WD – Washer / Dryer | DW – Dishwasher | OV – Oven | F/F – Fridge/Freezer | S – Storage** | W – Wardrobe | HW – Hot Water Cylinder

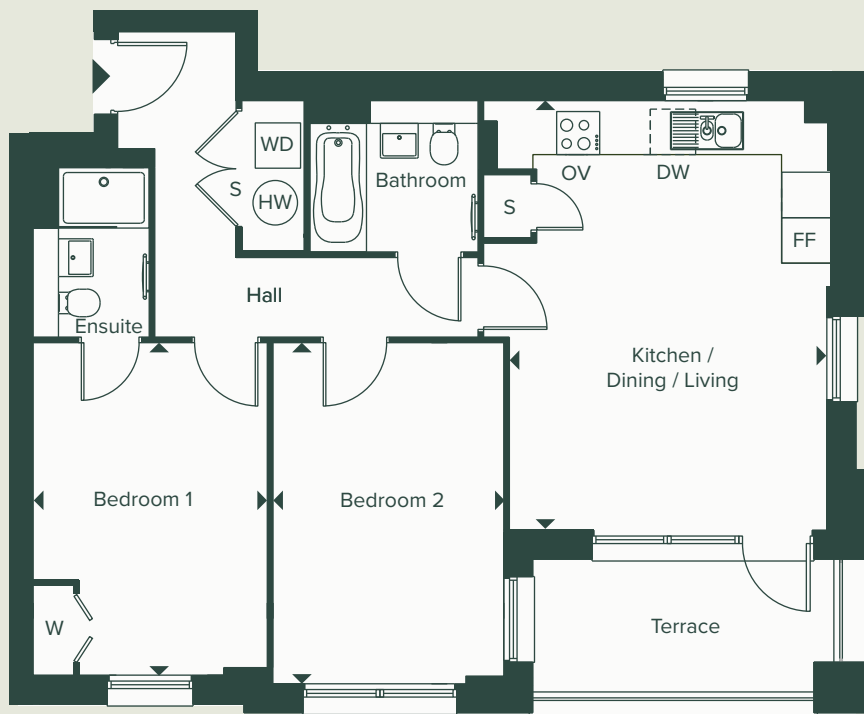
*Denotes apartments that are opposite handed/mirror image to the plans drawn. The floor plans provided are intended to only give a general indication of the proposed floor layout, are not drawn to scale and are not intended to form part of any offer, contract, warranty or representation. Measurements are given to the widest point, are approximate and are given as a guide only. They must not be relied upon as a statement or representation of fact. **Please note, the utility cupboard also houses the hot water cylinder as well as the mechanical and electrical controls which will reduce the storage space available. Do not use these measurements for carpet sizes, appliance spaces or items of furniture. Kitchen, bathroom and utility layouts may differ to build, and specific plot sizes and layouts may vary within the same unit type. Window sizes may vary. For further clarification regarding specific individual plots, please ask our Sales Associate.

2 BEDROOM APARTMENT

Type B-01
Plots 257



Ground Floor



DIMENSIONS

Kitchen / Living / Dining	5.67m x 4.30m	18' 7" x 14' 1"
Bedroom 1	4.39m x 3.09m	14' 5" x 10' 2"
Bedroom 2	4.50m x 3.05m	14' 9" x 10' 0"
Total Internal Area	72.3 m²	778.2 ft²
Terrace	7.08m²	76.2 ft²

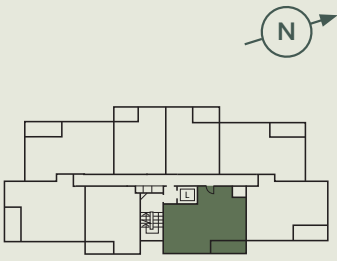
FLOOR	PLOTS
Ground	257

WD – Washer / Dryer | DW – Dishwasher | OV – Oven | F/F – Fridge/Freezer | S – Storage** | W – Wardrobe | HW – Hot Water Cylinder

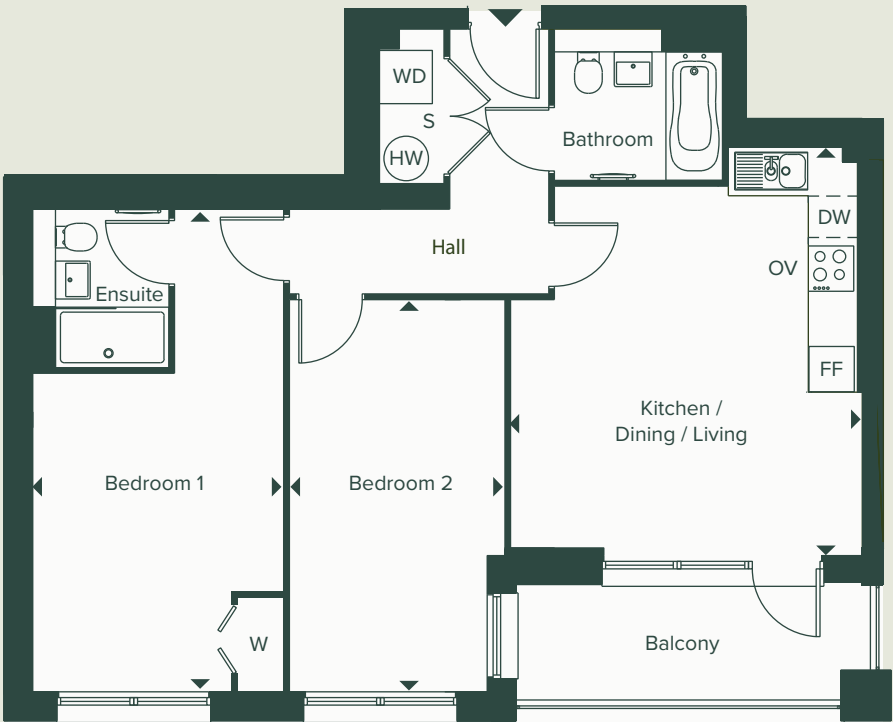
*Denotes apartments that are opposite handed/mirror image to the plans drawn. The floor plans provided are intended to only give a general indication of the proposed floor layout, are not drawn to scale and are not intended to form part of any offer, contract, warranty or representation. Measurements are given to the widest point, are approximate and are given as a guide only. They must not be relied upon as a statement or representation of fact. **Please note, the utility cupboard also houses the hot water cylinder as well as the mechanical and electrical controls which will reduce the storage space available. Do not use these measurements for carpet sizes, appliance spaces or items of furniture. Kitchen, bathroom and utility layouts may differ to build, and specific plot sizes and layouts may vary within the same unit type. Window sizes may vary. For further clarification regarding specific individual plots, please ask our Sales Associate.

2 BEDROOM APARTMENT

Type B-07
Plot 264, 272, 280 & 288



Floors 1 - 4



DIMENSIONS

Kitchen / Living / Dining	5.46m x 4.65m	17' 11" x 15' 3"
Bedroom 1	6.38m x 3.32m	20' 11" x 10' 10"
Bedroom 2	5.18m x 2.80m	17' 0" x 9' 4"
Total Internal Area	71.4 m²	769 ft²
Balcony	7.00m²	75.3 ft²

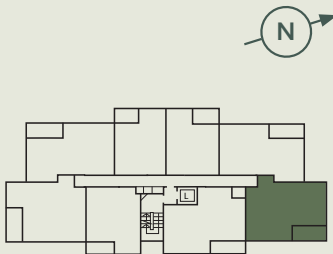
FLOOR	PLOTS
1st	264
2nd	272
3rd	280
4th	288

WD – Washer / Dryer | DW – Dishwasher | OV – Oven | F/F – Fridge/Freezer | S – Storage** | W – Wardrobe | HW – Hot Water Cylinder

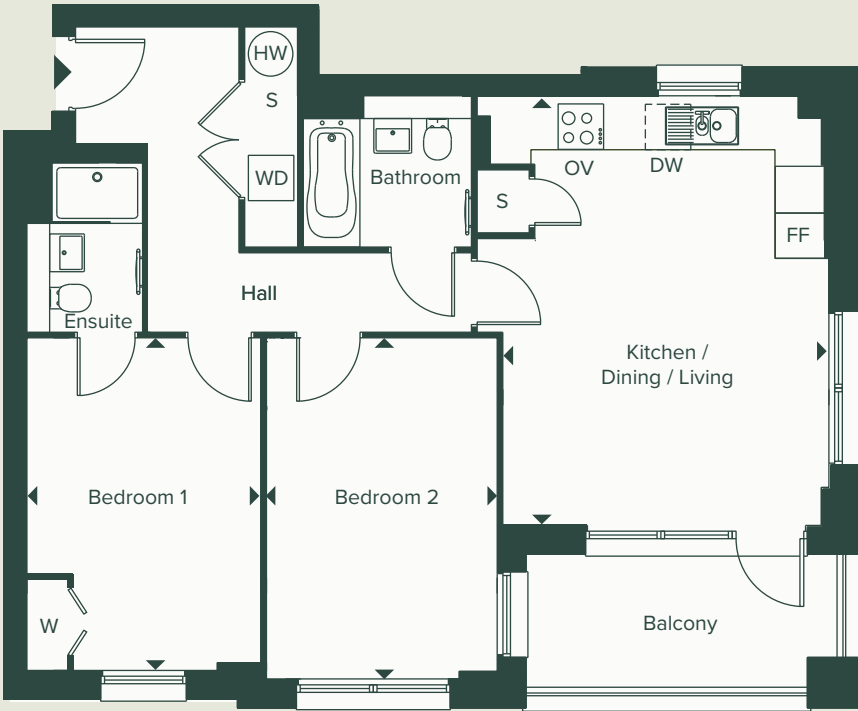
*Denotes apartments that are opposite handed/mirror image to the plans drawn. The floor plans provided are intended to only give a general indication of the proposed floor layout, are not drawn to scale and are not intended to form part of any offer, contract, warranty or representation. Measurements are given to the widest point, are approximate and are given as a guide only. They must not be relied upon as a statement or representation of fact. **Please note, the utility cupboard also houses the hot water cylinder as well as the mechanical and electrical controls which will reduce the storage space available. Do not use these measurements for carpet sizes, appliance spaces or items of furniture. Kitchen, bathroom and utility layouts may differ to build, and specific plot sizes and layouts may vary within the same unit type. Window sizes may vary. For further clarification regarding specific individual plots, please ask our Sales Associate.

2 BEDROOM APARTMENT

Type B-06
Plot 265



1st Floor



DIMENSIONS

Kitchen / Living / Dining	5.67m x 4.31m	18' 7" x 13' 9"
Bedroom 1	4.39m x 3.09m	14' 5" x 10' 2"
Bedroom 2	4.50m x 3.05m	14' 9" x 10' 0"
Total Internal Area	72.3 m²	778 ft²
Terrace	7.08m²	76.2 ft²

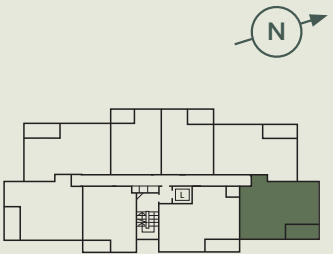
FLOOR	PLOTS
1st	265

WD – Washer / Dryer | DW – Dishwasher | OV – Oven | F/F – Fridge/Freezer | S – Storage** | W – Wardrobe | HW – Hot Water Cylinder

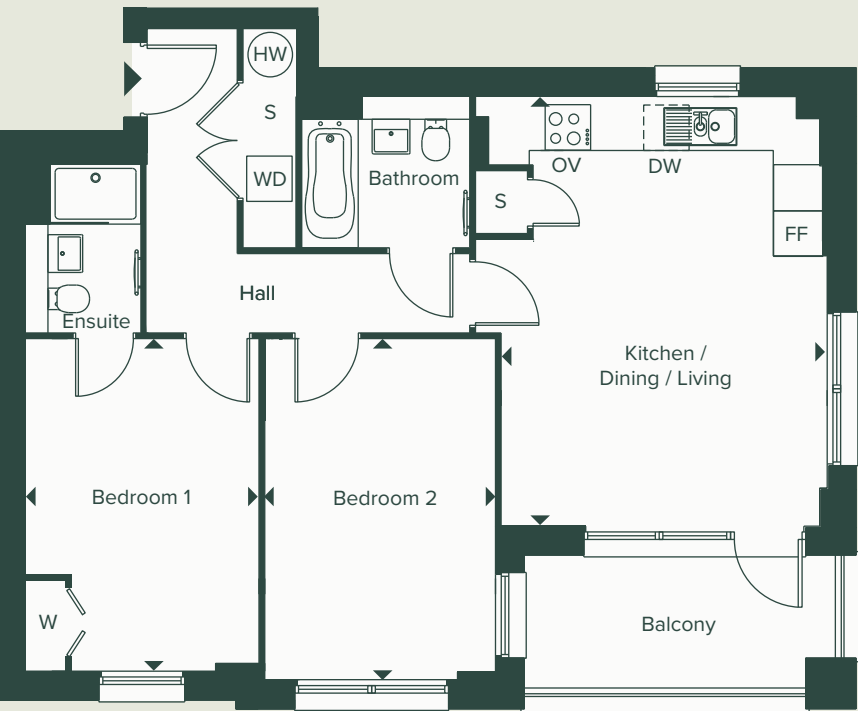
*Denotes apartments that are opposite handed/mirror image to the plans drawn. The floor plans provided are intended to only give a general indication of the proposed floor layout, are not drawn to scale and are not intended to form part of any offer, contract, warranty or representation. Measurements are given to the widest point, are approximate and are given as a guide only. They must not be relied upon as a statement or representation of fact. **Please note, the utility cupboard also houses the hot water cylinder as well as the mechanical and electrical controls which will reduce the storage space available. Do not use these measurements for carpet sizes, appliance spaces or items of furniture. Kitchen, bathroom and utility layouts may differ to build, and specific plot sizes and layouts may vary within the same unit type. Window sizes may vary. For further clarification regarding specific individual plots, please ask our Sales Associate.

2 BEDROOM APARTMENT

Type B-06V
Plots 273, 281 & 289



Floors 2 - 4



DIMENSIONS

Kitchen / Living / Dining	5.67m x 4.31m	18' 7" x 14' 1"
Bedroom 1	4.39m x 3.09m	14' 5" x 10' 2"
Bedroom 2	4.50m x 3.05m	14' 9" x 10' 0"
Total Internal Area	72.3 m²	778 ft²
Balcony	7.08m²	76.2 ft²

FLOOR	PLOTS
2nd	273
3rd	281
4th	289

WD – Washer / Dryer | DW – Dishwasher | OV – Oven | F/F – Fridge/Freezer | S – Storage** | W – Wardrobe | HW – Hot Water Cylinder

*Denotes apartments that are opposite handed/mirror image to the plans drawn. The floor plans provided are intended to only give a general indication of the proposed floor layout, are not drawn to scale and are not intended to form part of any offer, contract, warranty or representation. Measurements are given to the widest point, are approximate and are given as a guide only. They must not be relied upon as a statement or representation of fact. **Please note, the utility cupboard also houses the hot water cylinder as well as the mechanical and electrical controls which will reduce the storage space available. Do not use these measurements for carpet sizes, appliance spaces or items of furniture. Kitchen, bathroom and utility layouts may differ to build, and specific plot sizes and layouts may vary within the same unit type. Window sizes may vary. For further clarification regarding specific individual plots, please ask our Sales Associate.

WHERE QUALITY OF LIFE COMES FIRST

At The Quarry you can find a community, you can find tranquillity, you can find your place.

Gaugerail Court

Sainsbury's Local

Lime Wood Primary School

Play Corridor

Village Green

Orchard Corridor

Ecology Corridor

Ecology Area



WE'RE HERE AND READY TO HELP

WHEN YOU'RE READY TO
MOVE IN, L&Q WILL GIVE YOU
A PERSONAL INTRODUCTION
TO YOUR NEW L&Q HOME.

The L&Q new homes warranty

We will demonstrate how to operate your
appliances and heating and talk you through any
special features, all of which will be detailed in
your Home User Guide.

We are confident that you will be delighted with
your new L&Q home, but for added peace of
mind, all of our homes also come with an L&Q
new homes warranty.

This lasts for two years from the date of legal
completion. For the 2-year period, we guarantee items
supplied as part of your new home, covering repairs
needed due to faulty workmanship or materials. The
NHBC Buildmark cover is valid for 10 years from the
date the building was finished.

Your sales associate can provide you with more details
on the L&Q warranty and NHBC Buildmark cover. You
can also access the full terms and conditions on our
website: lqgroup.org.uk



L&Q achievements



A selection of other L&Q developments



Rockcliffe Square
Greenwich, London
lqhomes.com/rockcliffesquare



L&Q at Kidbrooke Village
Greenwich, London
lqhomes.com/kidbrookevillage



Prime Point
Greenwich, London
lqhomes.com/primepoint

Disclaimer
All information in this document is correct at the time of publication going to print Month 2025. The contents of this brochure should not be considered material information for the purposes of purchasing a home. No image or photograph (whether computer generated or otherwise) is taken as a statement or representation of fact, and no image or photograph (whether computer generated or otherwise) forms part of any offer, contract, warranty or representation.

Registered office: L&Q, 29-35 West Ham Lane, Stratford, London E15 4PH. Homes & Communities Agency L4517. Registered Society 30441R Exempt charity. Your home is at risk if you fail to keep up repayments on a mortgage, rent or other loan secured on it. Please make sure you can afford the repayments before you take out a mortgage.

Delivered in partnership



ANDERSON

thequarryerith.co.uk

0333 003 3737

sales@thequarryerith.co.uk